



TIMBER SALE MAP

This information provided by authority of Part 525, 1994 PA 451, as amended.

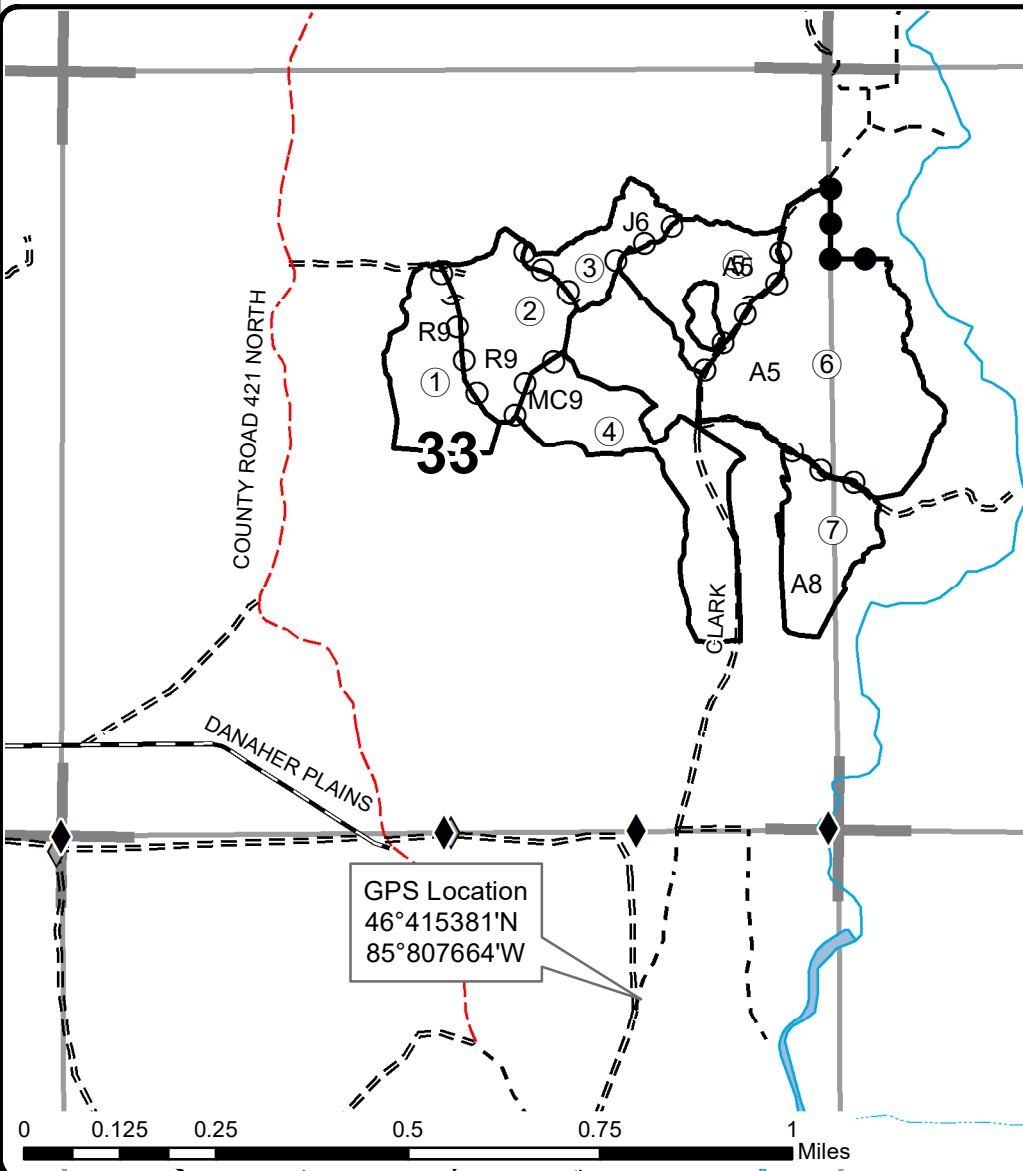
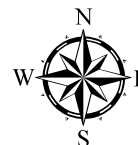
Forest Management Unit Newberry		County Luce	Mapped By A. Livernore	Date 09/21/2021	Page 1	of 1
Township 47N	Range 12W	Section(s) and Subdivision(s) SE1/4, NE1/4, NESW sec. 33 SW1/4, NWSW sec. 34		Scale 1:15,840		
Cover Type			Density			
A = Aspen	H = Hemlock	N = Marsh	U = Upland Brush	0 = Non Stocked	5 = Pole Timber Medium	
B = Paper Birch	J = Jack Pine	O = Oak	UM = Upland Mixed	1 = Seedling Sapling Poor	6 = Pole Timber Well	
C = Cedar	L = Lowland Brush	P = Lowland Poplar	V = Bog or Marsh	2 = Seedling Sapling Medium	7 = Saw Timber Poor	
D = Treed Bog	LM = Lowland Mixed	Q = Mixed Swamp Conifer	W = White Pine	3 = Seedling Sapling Well	8 = Saw Timber Medium	
E = Swamp Hdwoods	M = Mpl, Bch, Brch	R = Red Pine	X = Non Stocked	4 = Pole Timber Poor	9 = Saw Timber Well	
F = Spruce Fir	MC = Mixed Conifer	S = Black Spruce	Z = Water			
G = Grass	MD = Mixed Deciduous	T = Tamarack				

PU	Acres	Cords
1	14.4	600
2	15.9	400
3	8.1	198
4	22.5	481
5	13.7	243
6	44.6	798
7	13.2	262

Torretta Bruciata Mix

Compartment 42093

132.3 Acres



Legend

- ◆ Survey Corners
- ◇ Field Grade Corners
- Primary Forest Road
- == Forest Access Route
- - Gravel Road
- - - County Road - Seasonal
- Private
- ⋯ Temporary Management Access
- ⋯ Intermittent Stream
- Perennial River
- Lakes and Rivers
- Unit Boundary (Red)
- Payment Unit (Yellow)
- Private Line (Blue)
- Section Corners

