



TIMBER SALE MAP

This information provided by authority of Part 525, 1994 PA 451, as amended.

Sale Number 42-014-24	Date 08/30/2024	
Scale 1:15,840	Page 1	Of 1

Forest Management Unit Newberry Mgt Unit	County Luce	Mapped By: N Wheeler
		Cruised By: Newberry Unit Staff

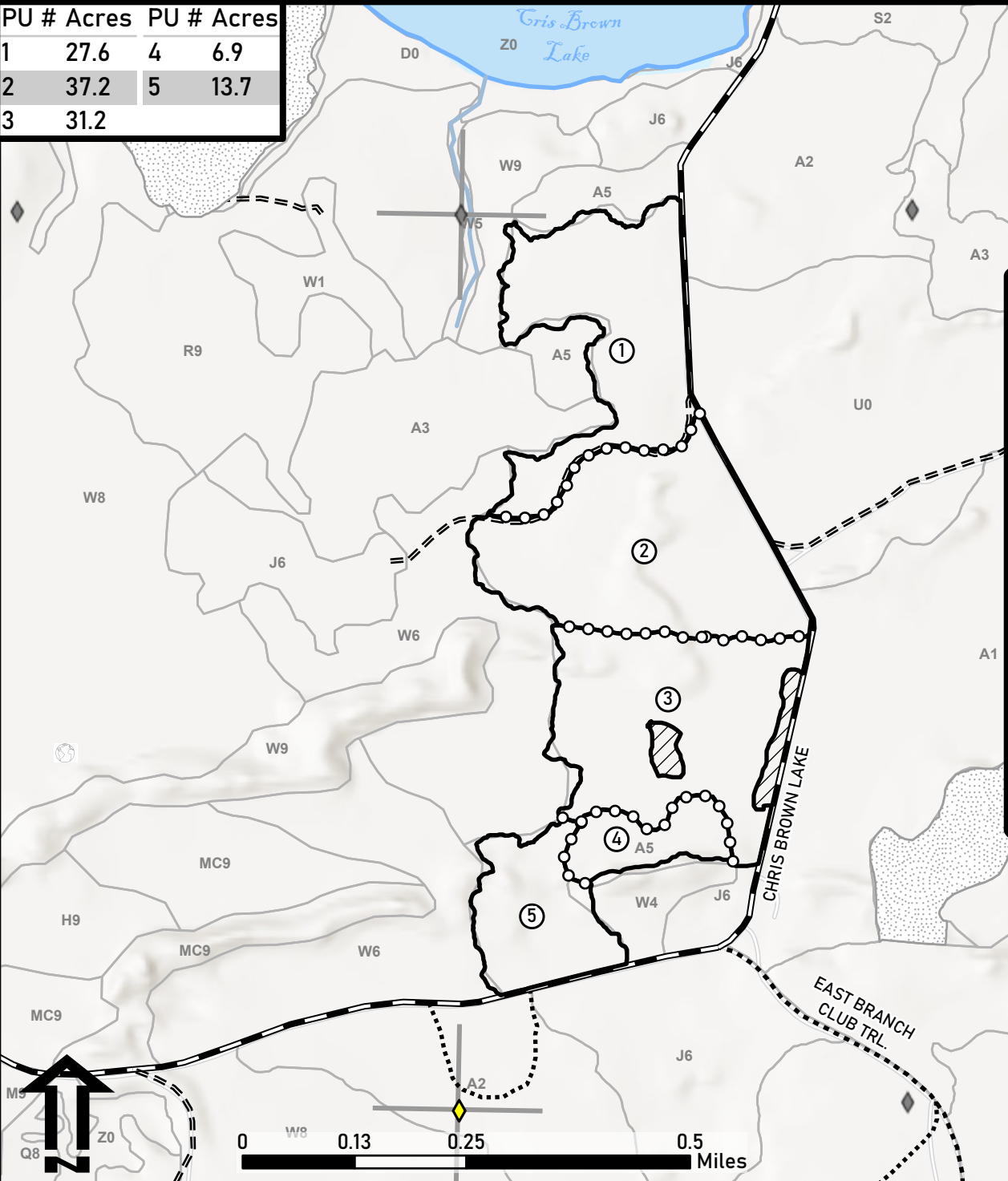
Township 49N	Range 10W	Section(s) and Subdivision(s) Sec. 24 SWSW; Sec. 25 NW,N1/2SW,SWSW;
-----------------	--------------	--

Cover Type			
A = Aspen	J = Jack Pine	O = Oak	U = Upland Brush
B = Paper Birch	K = Rock	P = Lowland Poplar	UM = Upland Mix Forest
C = Cedar	L = Lowland Brush	Q = Mixed Swamp Conifer	V = Bog or Marsh
D = Treed Bog	LM = Lowland Mix Forest	R = Red Pine	W = White Pine
E = Swamp Hardwoods	M = Maple, Beech, Birch	S = Black Spruce	X = Non Stocked
F = Spruce/Fir	MC = Mixed Conifer	T = Tamarack	Y = Sand
G = Grass	MD = Mixed Deciduous	Z = Water	
H = Hemlock	N = Marsh		

Density	
0 = Non Stocked	5 = Pole Timber Medium
1 = Seedling Sapling Poor	6 = Pole Timber Well
2 = Seedling Sapling Medium	7 = Saw Timber Poor
3 = Seedling Sapling Well	8 = Saw Timber Medium
4 = Pole Timber Poor	9 = Saw Timber Well

CHRIS BROWN LAKE JACK PINE
Compartment: 42031 Acres: 116.7

PU #	Acres	PU #	Acres
1	27.6	4	6.9
2	37.2	5	13.7
3	31.2		



Legend	
	Payment Unit
	Against State (Red)
	Payment Unit (Yellow)
	Private Boundary (Blue)
	Survey Grade Corner
	Field Grade Corner
	MIRIS Section Corner
	Perennial River
	Lakes and Rivers
	Primary Forest Road
	Secondary Forest Road
	Forest Access Route
	Retention

