



TIMBER SALE MAP

This information provided by authority of Part 525, 1994 PA 451, as amended.

Sale Number 42-016-24	Date 08/30/2024	
Scale 1:15,840	Page 1	Of 1

Forest Management Unit Newberry Mgt Unit	County Chippewa	Mapped By: Payment
		Cruised By: Grossman Forestry

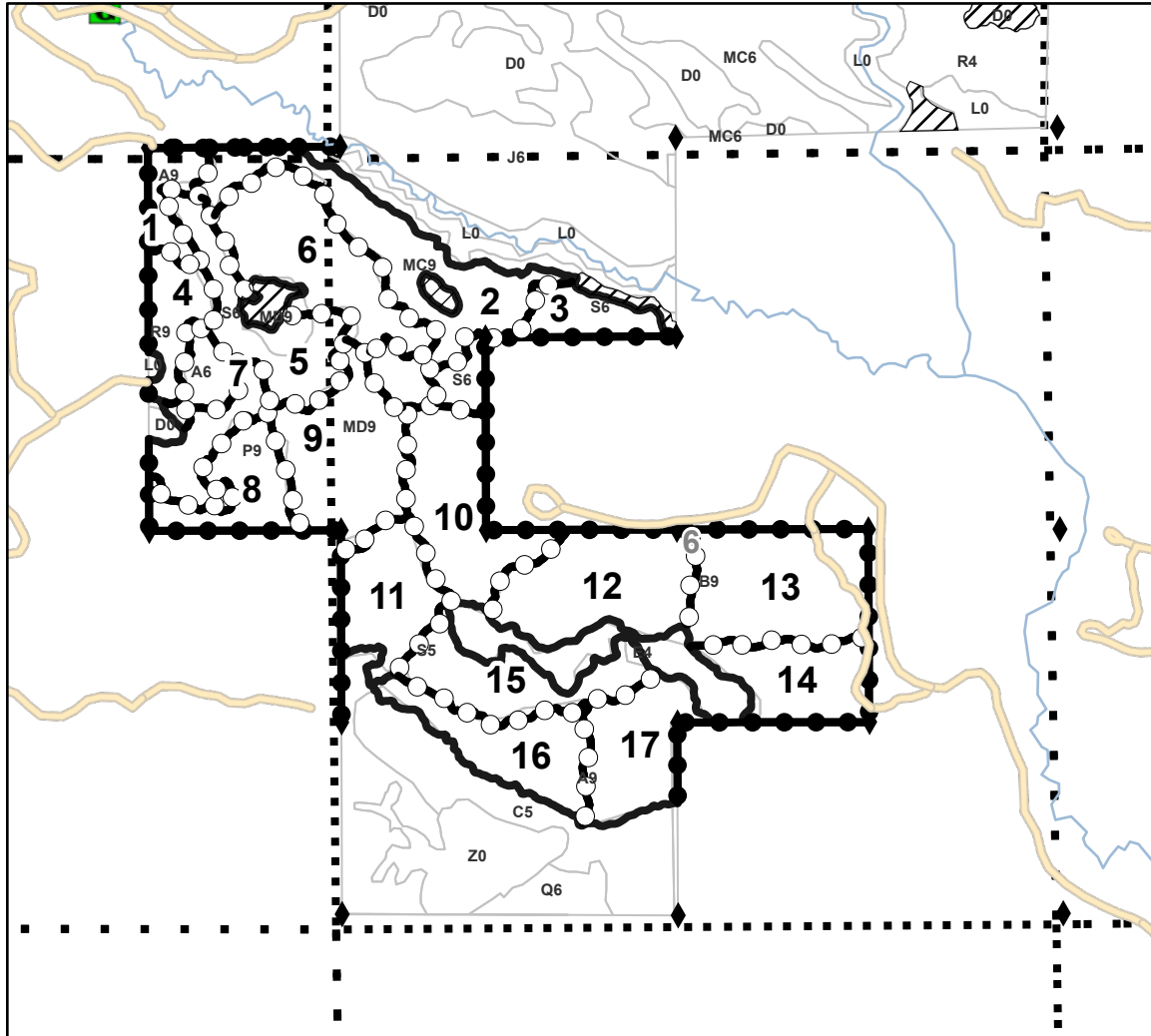
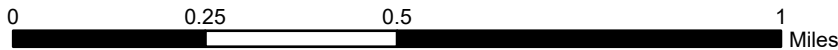
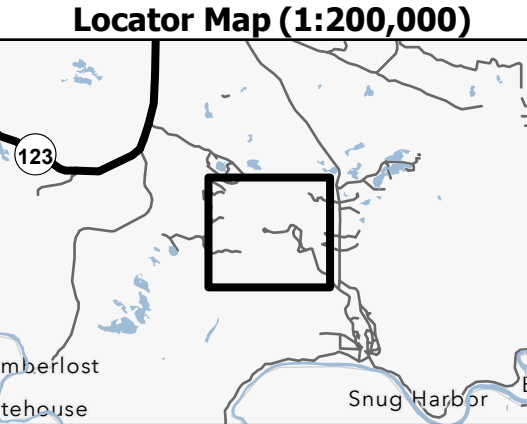
Township 48N	Range 06W /	Section(s) and Subdivision(s) Sec. 1 E1/2NE; Sec. 6 N1/2NW,SWNW,SW,NWSE;
------------------------	-----------------------	---

Cover Type			
A = Aspen	J = Jack Pine	O = Oak	U = Upland Brush
B = Paper Birch	K = Rock	P = Lowland Poplar	UM = Upland Mix Forest
C = Cedar	L = Lowland Brush	Q = Mixed Swamp Conifer	V = Bog or Marsh
D = Treed Bog	LM = Lowland Mix Forest	R = Red Pine	W = White Pine
E = Swamp Hardwoods	M = Maple, Beech, Birch	S = Black Spruce	X = Non Stocked
F = Spruce/Fir	MC = Mixed Conifer	T = Tamarack	Y = Sand
G = Grass	MD = Mixed Deciduous	Z = Water	
H = Hemlock	N = Marsh		

Density	
0 = Non Stocked	5 = Pole Timber Medium
1 = Seedling Sapling Poor	6 = Pole Timber Well
2 = Seedling Sapling Medium	7 = Saw Timber Poor
3 = Seedling Sapling Well	8 = Saw Timber Medium
4 = Pole Timber Poor	9 = Saw Timber Well

PU #	Acres	PU #	Acres	PU #	Acres	PU #	Acres
1	5	6	20.7	11	12.5	16	13.4
2	24.8	7	4.3	12	20.1	17	13.4
3	9.3	8	10.3	13	21.8		
4	7.3	9	27.1	14	12.1		
5	13.8	10	18	15	13.4		

Blue Line Bonanza
247.5 Acres



Legend	
	Payment Unit
	Stand
	Retention Areas
	Sections
	Against State (Red)
	Payment Unit (Yellow)
	Private Line (Blue)
	Non-DNR Road
	Perennial River
	Survey Grade Corner
	Gate
	Retention

Use QR Code to open Map in App

