



**TIMBER SALE MAP**

This information provided by authority of Part 525, 1994 PA 451, as amended.

Sale Number  
**42-021-25**

Date  
**09/09/2025**

Forest Management Unit	County	Mapped By: Payment	Scale	Page	Of
Newberry Mgt Unit	Chippewa	Cruised By: DNR Staff	1:15,840	1	1
Township	Range	Section(s) and			
44N / 45N	07W /	Subdivision(s) Sec. 1 N1/2NE; Sec. 31 SENE,E1/2SE; Sec. 32 SWNW,W1/2SW; Sec. 36 SE;			

**Cover Type**

A = Aspen	J = Jack Pine	O = Oak	U = Upland Brush
B = Paper Birch	K = Rock	P = Lowland Poplar	UM = Upland Mix Forest
C = Cedar	L = Lowland Brush	Q = Mixed Swamp Conifer	V = Bog or Marsh
D = Treed Bog	LM = Lowland Mix Forest	R = Red Pine	W = White Pine
E = Swamp Hardwoods	M = Maple, Beech, Birch	S = Black Spruce	X = Non Stocked
F = Spruce/Fir	MC = Mixed Conifer	T = Tamarack	Y = Sand
G = Grass	MD = Mixed Deciduous		Z = Water
H = Hemlock	N = Marsh		

**Density**

0 = Non Stocked	5 = Pole Timber Medium
1 = Seedling Sapling Poor	6 = Pole Timber Well
2 = Seedling Sapling Medium	7 = Saw Timber Poor
3 = Seedling Sapling Well	8 = Saw Timber Medium
4 = Pole Timber Poor	9 = Saw Timber Well

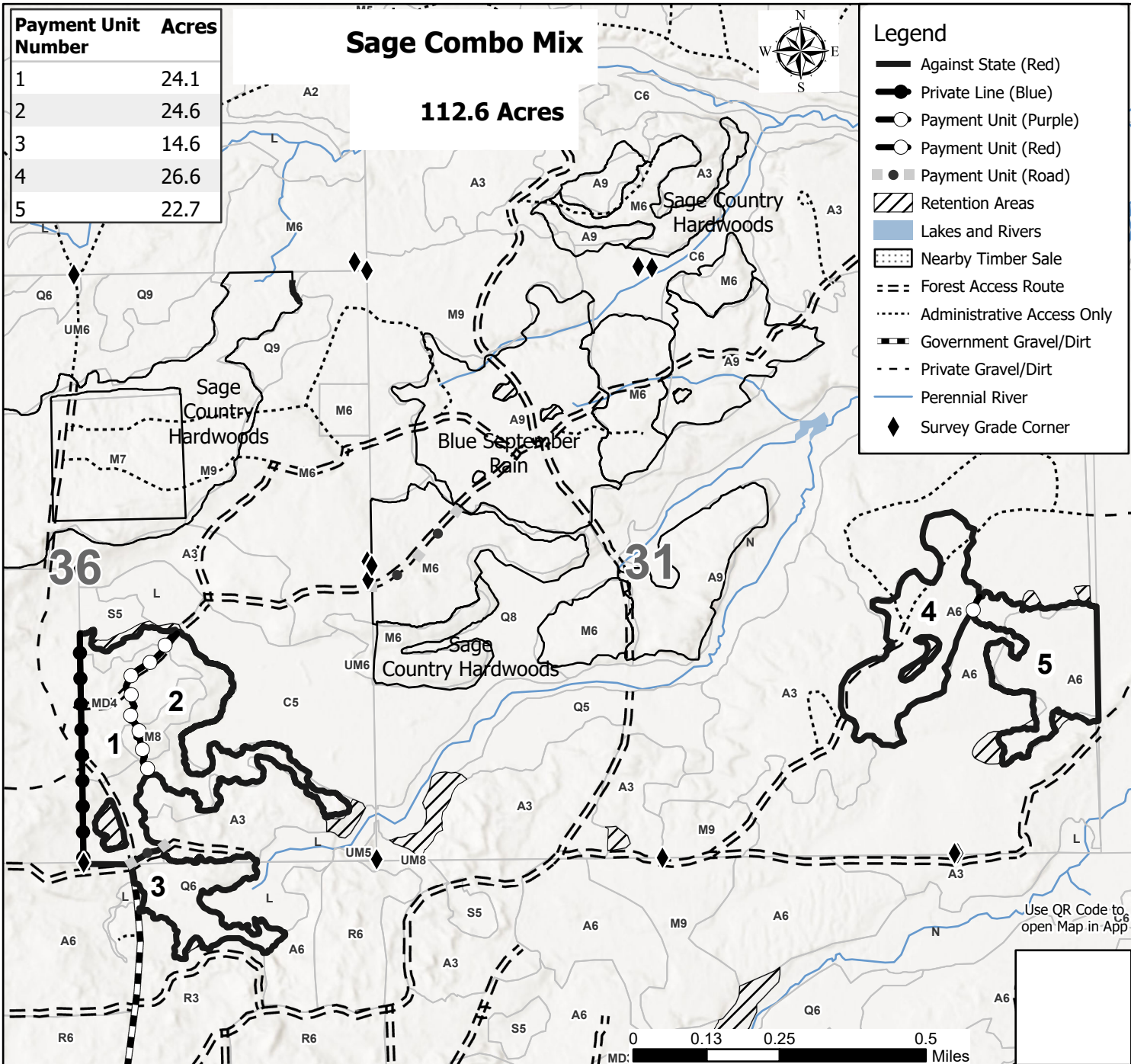
Payment Unit Number	Acres
1	24.1
2	24.6
3	14.6
4	26.6
5	22.7

**Sage Combo Mix**

**112.6 Acres**

**Legend**

- Against State (Red)
- Private Line (Blue)
- Payment Unit (Purple)
- Payment Unit (Red)
- Payment Unit (Road)
- ▨ Retention Areas
- ▬ Lakes and Rivers
- ▨ Nearby Timber Sale
- - - Forest Access Route
- ..... Administrative Access Only
- ▬ Government Gravel/Dirt
- - - Private Gravel/Dirt
- Perennial River
- ◆ Survey Grade Corner



Use QR Code to open Map in App

