



TIMBER SALE MAP

This information provided by authority of Part 525, 1994 PA 451, as amended.

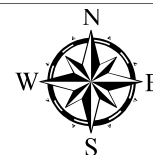
Forest Management Unit Pigeon River Country	County Otsego	Mapped By Rekowski	Date 06/11/2021	Page 1	of 1
Township 32N	Range 02W	Section(s) and Subdivision(s) Also 32N 03W Section 12, NE1/4	Scale 1:15,840		
Cruised By Crew					

Cover Type				Density	
A = Aspen	H = Hemlock	N = Marsh	U = Upland Brush	0 = Non Stocked	5 = Pole Timber Medium
B = Paper Birch	J = Jack Pine	O = Oak	UM = Upland Mixed	1 = Seedling Sapling Poor	6 = Pole Timber Well
C = Cedar	L = Lowland Brush	P = Lowland Poplar	V = Bog or Marsh	2 = Seedling Sapling Medium	7 = Saw Timber Poor
D = Treed Bog	LM = Lowland Mixed	Q = Mixed Swamp Conifer	W = White Pine	3 = Seedling Sapling Well	8 = Saw Timber Medium
E = Swamp Hdwoods	M = Mpl, Bch, Brch	R = Red Pine	X = Non Stocked	4 = Pole Timber Poor	9 = Saw Timber Well
F = Spruce Fir	MC = Mixed Conifer	S = Black Spruce	Z = Water		
G = Grass	MD = Mixed Deciduous	T = Tamarack			

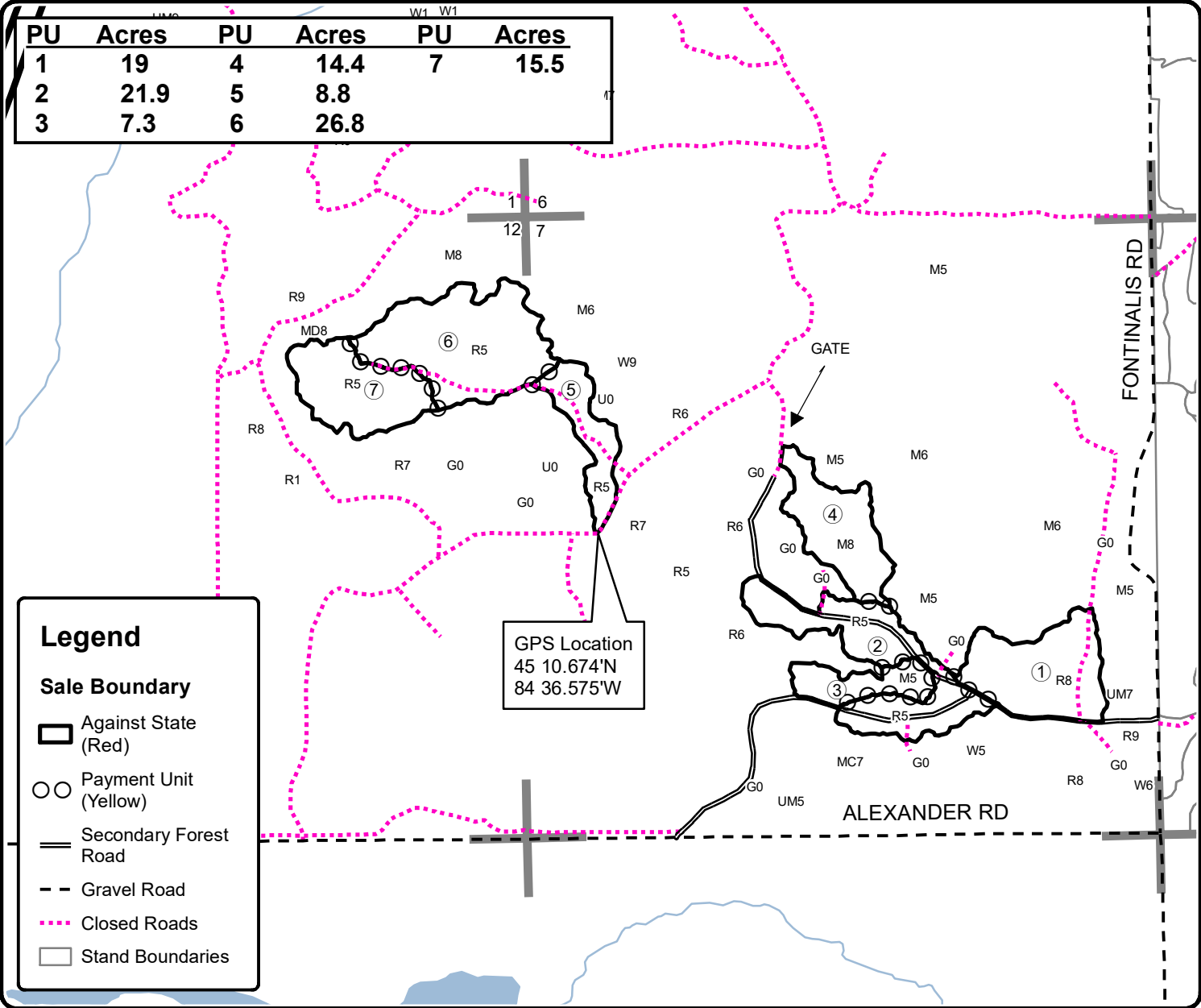
Storey Time Pine

Compartment 062

113.7 Acres



PU	Acres	PU	Acres	PU	Acres
1	19	4	14.4	7	15.5
2	21.9	5	8.8		
3	7.3	6	26.8		



Legend

Sale Boundary

- Against State (Red)
- Payment Unit (Yellow)
- Secondary Forest Road
- Gravel Road
- Closed Roads
- Stand Boundaries

GPS Location
45 10.674'N
84 36.575'W

