



# TIMBER SALE MAP

This information provided by authority of Part 525, 1994 PA 451, as amended.

Forest Management Unit Pigeon River Country		County Cheboygan	Mapped By Jake Halabut	Date 09/12/22	Page 1	of 1
Township 33N	Range 01E	Section(s) and Subdivision(s) 24: SESW, SWSE; 25: N1/2NW, SENW, NE		Scale 1:15,840		
Cover Type				Density		
A = Aspen	H = Hemlock	N = Marsh	U = Upland Brush	0 = Non Stocked	5 = Pole Timber Medium	
B = Paper Birch	J = Jack Pine	O = Oak	UM = Upland Mixed	1 = Seedling Sapling Poor	6 = Pole Timber Well	
C = Cedar	L = Lowland Brush	P = Lowland Poplar	V = Bog or Marsh	2 = Seedling Sapling Medium	7 = Saw Timber Poor	
D = Treed Bog	LM = Lowland Mixed	Q = Mixed Swamp Conifer	W = White Pine	3 = Seedling Sapling Well	8 = Saw Timber Medium	
E = Swamp Hdwoods	M = Mpl, Bch, Brch	R = Red Pine	X = Non Stocked	4 = Pole Timber Poor	9 = Saw Timber Well	
F = Spruce Fir	MC = Mixed Conifer	S = Black Spruce	Z = Water			
G = Grass	MD = Mixed Deciduous	T = Tamarack				

### PU Acres

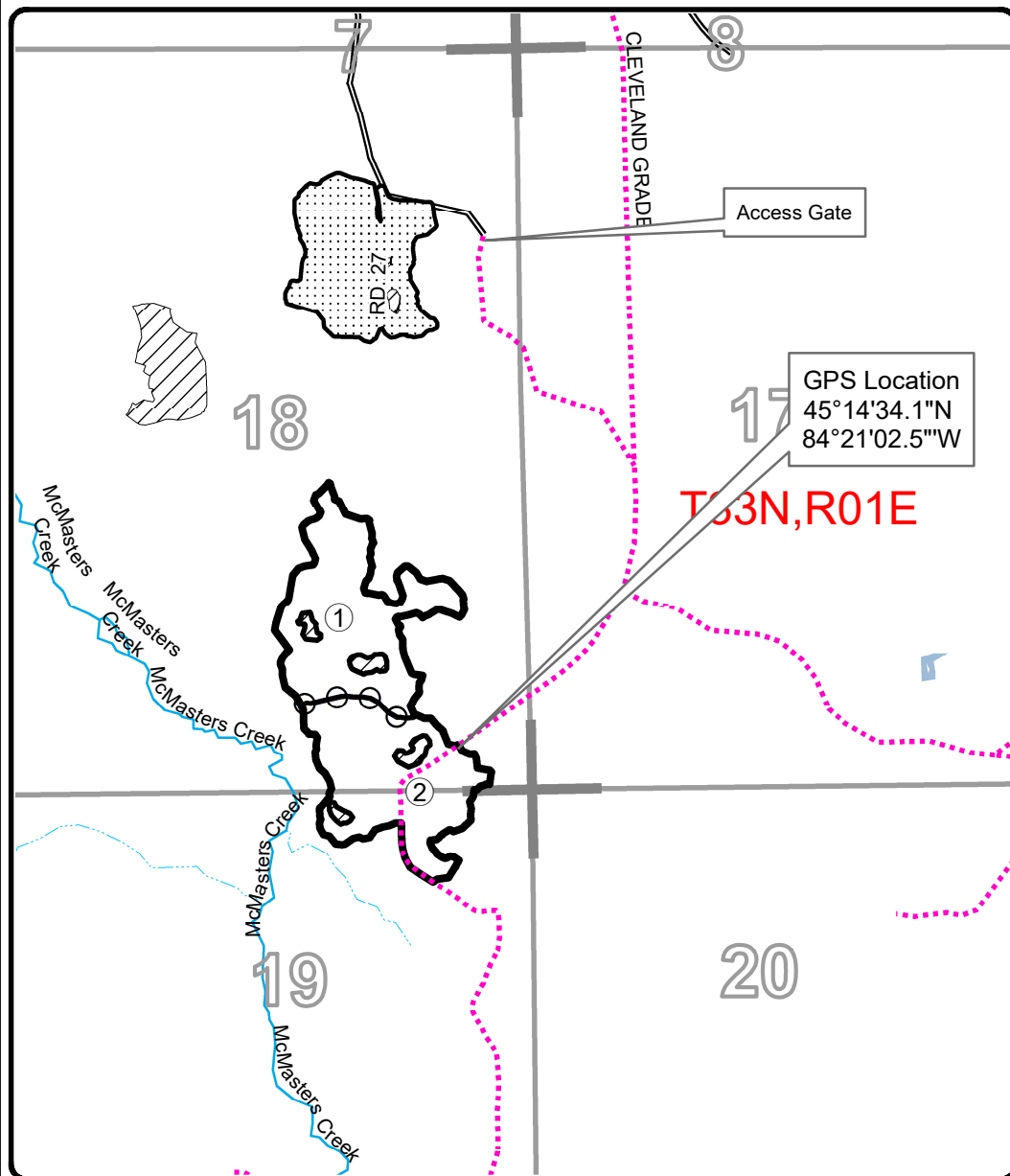
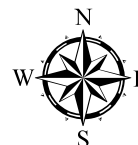
1 24.1

2 22.9

## I Walk The Pine

### Compartment 25

### 47 Acres



### Legend

- Against State (Red)
- Payment Unit (Yellow)
- Retention Area (Red X's)
- Nearby Timber Sale
- Secondary Forest Road
- Temporary Road
- Intermittent Stream
- Perennial River
- Lakes and Rivers

### Locator Map 1:200,000

