



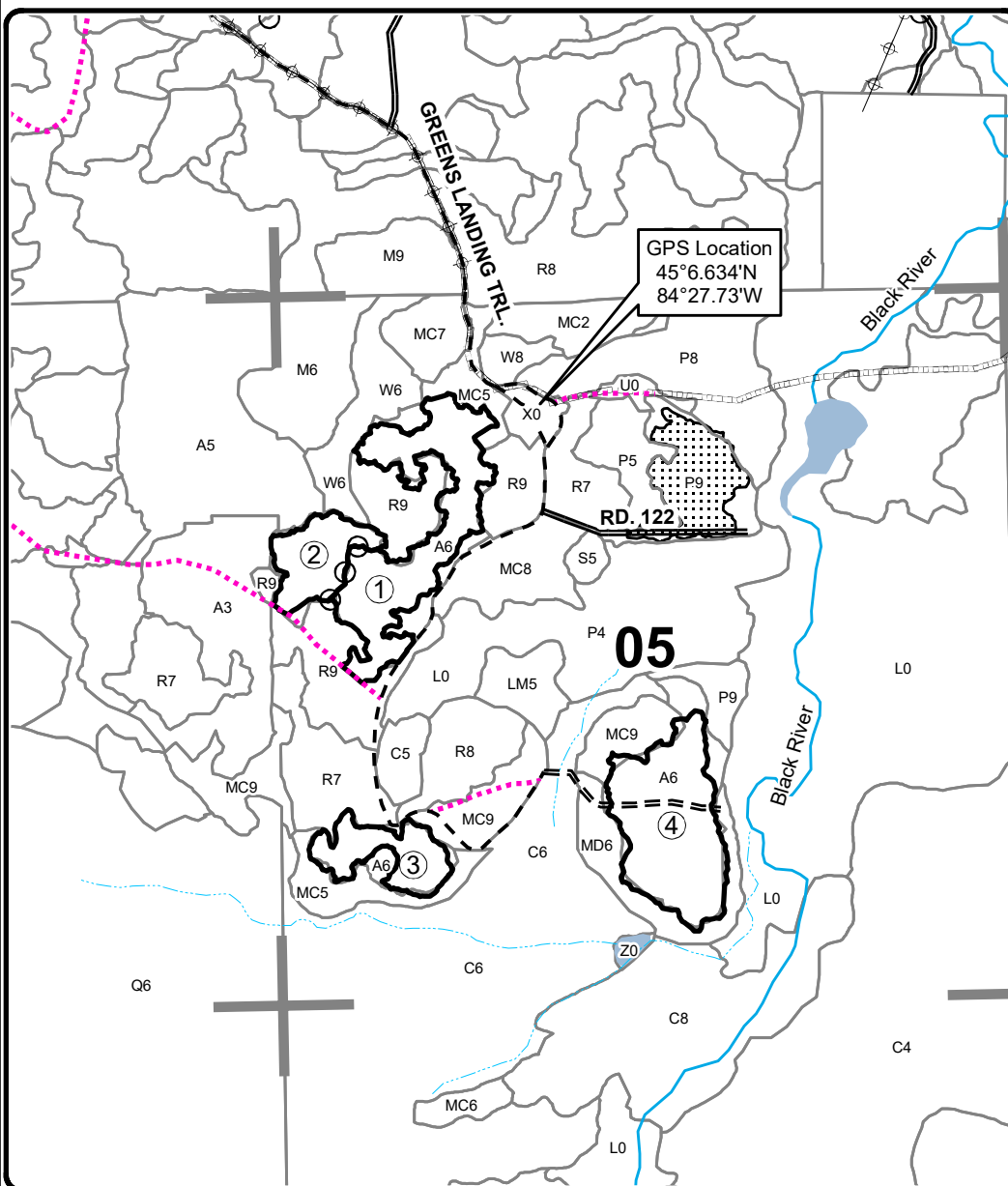
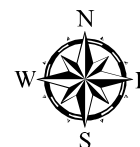
TIMBER SALE MAP

This information provided by authority of Part 525, 1994 PA 451, as amended.

Forest Management Unit Pigeon River Country		County Otsego	Mapped By Rekowski	Date 09/07/2023	Page 1	of 1
Township 31N	Range 01W	Section(s) and Subdivision(s) 5: NW1/4, SW1/4, W1/2SE 6: SENE		Scale 1:15,840		
Cover Type				Density		
A = Aspen	H = Hemlock	N = Marsh	U = Upland Brush	0 = Non Stocked	5 = Pole Timber Medium	
B = Paper Birch	J = Jack Pine	O = Oak	UM = Upland Mixed	1 = Seedling Sapling Poor	6 = Pole Timber Well	
C = Cedar	L = Lowland Brush	P = Lowland Poplar	V = Bog or Marsh	2 = Seedling Sapling Medium	7 = Saw Timber Poor	
D = Treed Bog	LM = Lowland Mixed	Q = Mixed Swamp Conifer	W = White Pine	3 = Seedling Sapling Well	8 = Saw Timber Medium	
E = Swamp Hdwoods	M = Mpl, Bch, Brch	R = Red Pine	X = Non Stocked	4 = Pole Timber Poor	9 = Saw Timber Well	
F = Spruce Fir	MC = Mixed Conifer	S = Black Spruce	Z = Water			
G = Grass	MD = Mixed Deciduous	T = Tamarack				

PU	Acres	PU	Acres
1	20.7	4	19.6
2	7.4		
3	7.2		

Goshawk Down Compartment 045 54.9 Acres



Legend

- Sale Boundary**
- Against State (Red)
- Payment Unit (Yellow)
- Stand Boundaries
- Nearby Timber Sales
- Secondary Forest Road
- Forest Access Route
- Gravel Road
- Closed Roads
- Pipeline
- Powerline
- Intermittent Stream
- Perennial River
- Section Corners

Locator Map 1:200,000

