



TIMBER SALE MAP

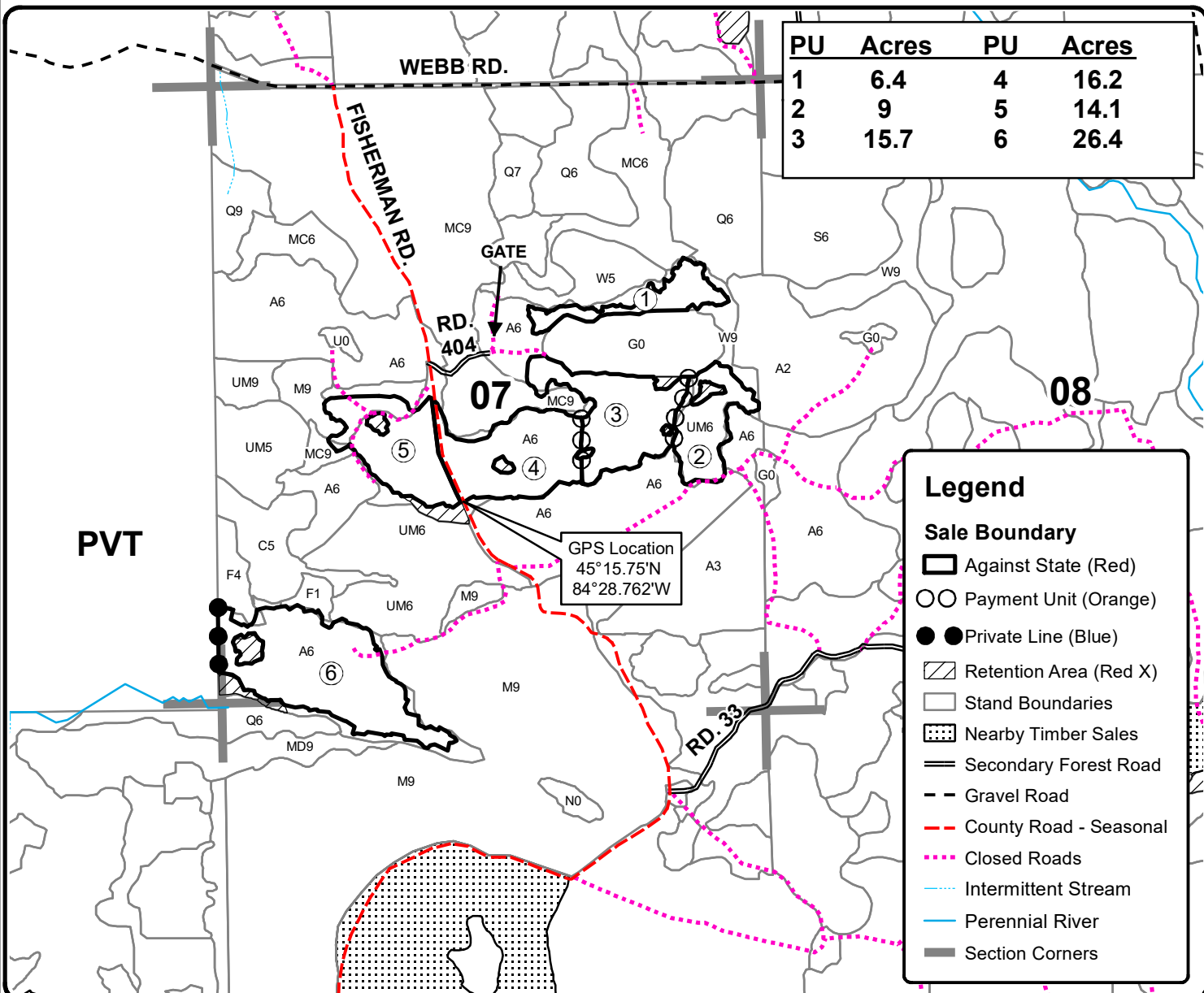
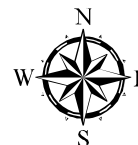
This information provided by authority of Part 525, 1994 PA 451, as amended.

Forest Management Unit Pigeon River Country		County Cheboygan	Mapped By Rekowski	Date 11/18/2022	Page 1	of 1
Township 33N	Range 01W	Section(s) and Subdivision(s) 7: S1/2NE, NESW, S1/2SW, N1/2SE 18: N1/2NW		Scale 1:15,840		
Cover Type			Density			
A = Aspen	H = Hemlock	N = Marsh	U = Upland Brush	0 = Non Stocked	5 = Pole Timber Medium	
B = Paper Birch	J = Jack Pine	O = Oak	UM = Upland Mixed	1 = Seedling Sapling Poor	6 = Pole Timber Well	
C = Cedar	L = Lowland Brush	P = Lowland Poplar	V = Bog or Marsh	2 = Seedling Sapling Medium	7 = Saw Timber Poor	
D = Treed Bog	LM = Lowland Mixed	Q = Mixed Swamp Conifer	W = White Pine	3 = Seedling Sapling Well	8 = Saw Timber Medium	
E = Swamp Hdwoods	M = Mpl, Bch, Brch	R = Red Pine	X = Non Stocked	4 = Pole Timber Poor	9 = Saw Timber Well	
F = Spruce Fir	MC = Mixed Conifer	S = Black Spruce	Z = Water			
G = Grass	MD = Mixed Deciduous	T = Tamarack				

What's in the Box Aspen

Compartment 007

87.8 Acres



Legend

- Sale Boundary**
- ▭ Against State (Red)
- Payment Unit (Orange)
- Private Line (Blue)
- ▨ Retention Area (Red X)
- Stand Boundaries
- ▤ Nearby Timber Sales
- ▬ Secondary Forest Road
- - Gravel Road
- - - County Road - Seasonal
- ⋯ Closed Roads
- ⋯ Intermittent Stream
- Perennial River
- Section Corners

