



TIMBER SALE MAP

This information provided by authority of Part 525, 1994 PA 451, as amended.

Sale Number 53-028-24	Date 07/29/2024	
Scale 1:10,000	Page 1	Of 1

Forest Management Unit Pigeon River Country Mgt Unit	County Cheboygan	Mapped By: Rekowski
		Cruised By: Rekowski

Township 33N	Range 01E	Section(s) and Subdivision(s) Sec. 10 N1/2NE; Sec. 3 SWNE,SE;
-----------------	--------------	---

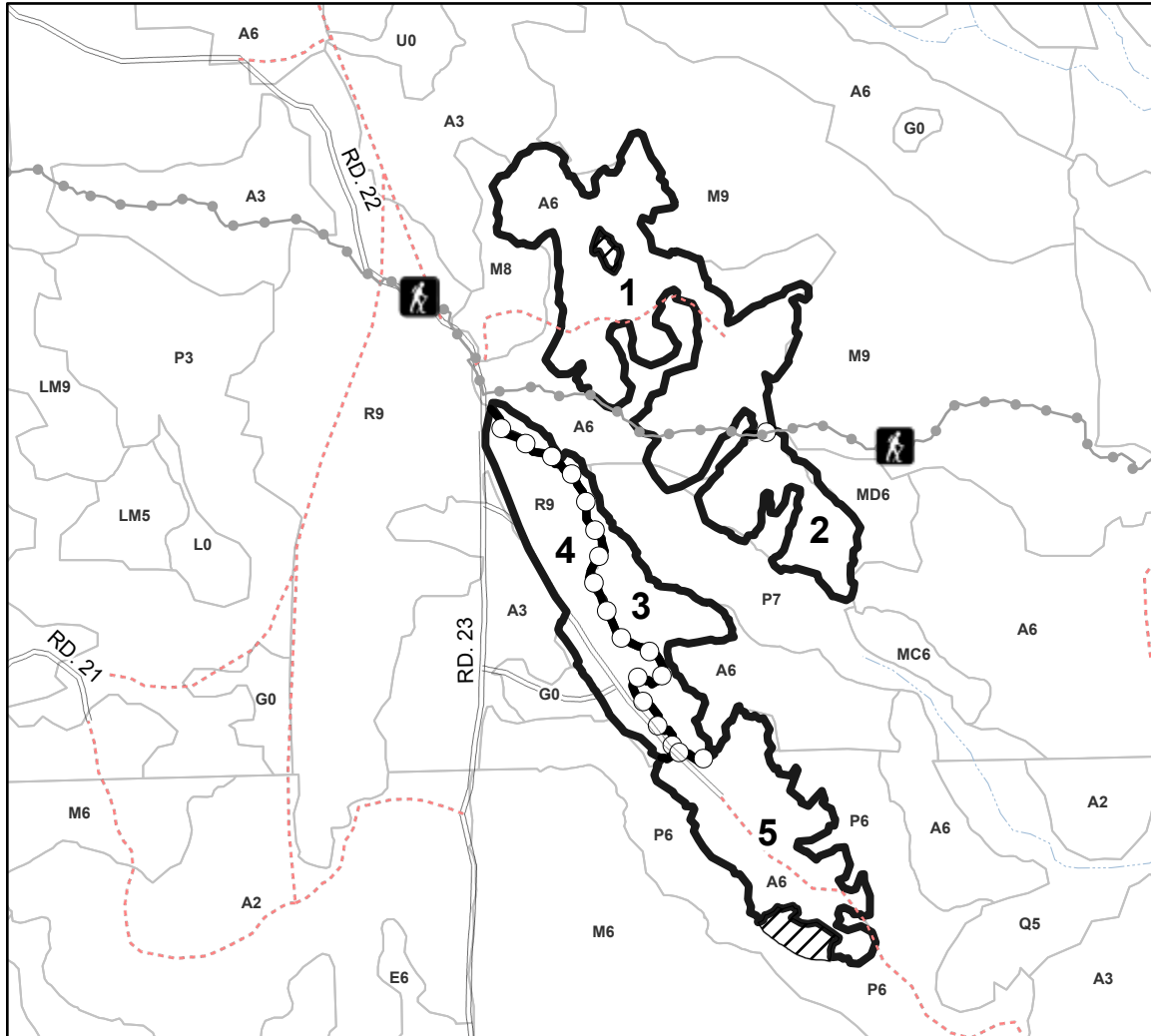
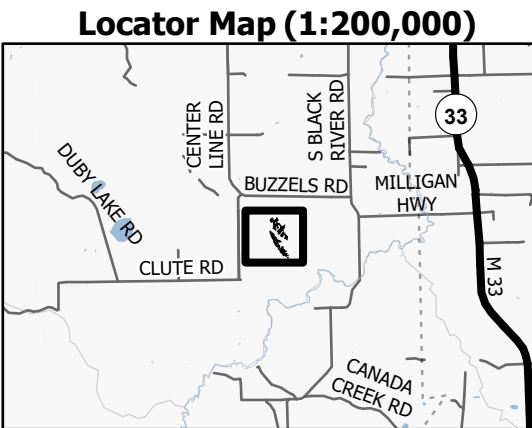
Cover Type			
A = Aspen	J = Jack Pine	O = Oak	U = Upland Brush
B = Paper Birch	K = Rock	P = Lowland Poplar	UM = Upland Mix Forest
C = Cedar	L = Lowland Brush	Q = Mixed Swamp Conifer	V = Bog or Marsh
D = Treed Bog	LM = Lowland Mix Forest	R = Red Pine	W = White Pine
E = Swamp Hardwoods	M = Maple, Beech, Birch	S = Black Spruce	X = Non Stocked
F = Spruce/Fir	MC = Mixed Conifer	T = Tamarack	Y = Sand
G = Grass	MD = Mixed Deciduous	Z = Water	
H = Hemlock	N = Marsh		

Density	
0 = Non Stocked	5 = Pole Timber Medium
1 = Seedling Sapling Poor	6 = Pole Timber Well
2 = Seedling Sapling Medium	7 = Saw Timber Poor
3 = Seedling Sapling Well	8 = Saw Timber Medium
4 = Pole Timber Poor	9 = Saw Timber Well

PU #	Acres
1	19.7
2	5.6
3	6.4
4	8.1
5	9.9

Aspen Edges

49.6 Acres



Legend

- Against State (Red)
- Retention Areas (Red)
- Payment Unit (Yellow)
- Stand
- Recreational Trail
- Secondary Forest Road
- Administrative Access Only
- Intermittent Stream

Use QR Code to open Map in App

