



TIMBER SALE MAP

This information provided by authority of Part 525, 1994 PA 451, as amended.

Sale Number 53-030-24	Date 09/24/2024	
Scale 1:15,840	Page 1	Of 1

Forest Management Unit Pigeon River Country Mgt Unit	County Cheboygan	Mapped By: Rekowski
		Cruised By: Rekowski

Township 34N	Range 01W	Section(s) and Subdivision(s) Sec. 21 NENE,S1/2NE,SW; Sec. 22 W1/2NW;
-----------------	--------------	---

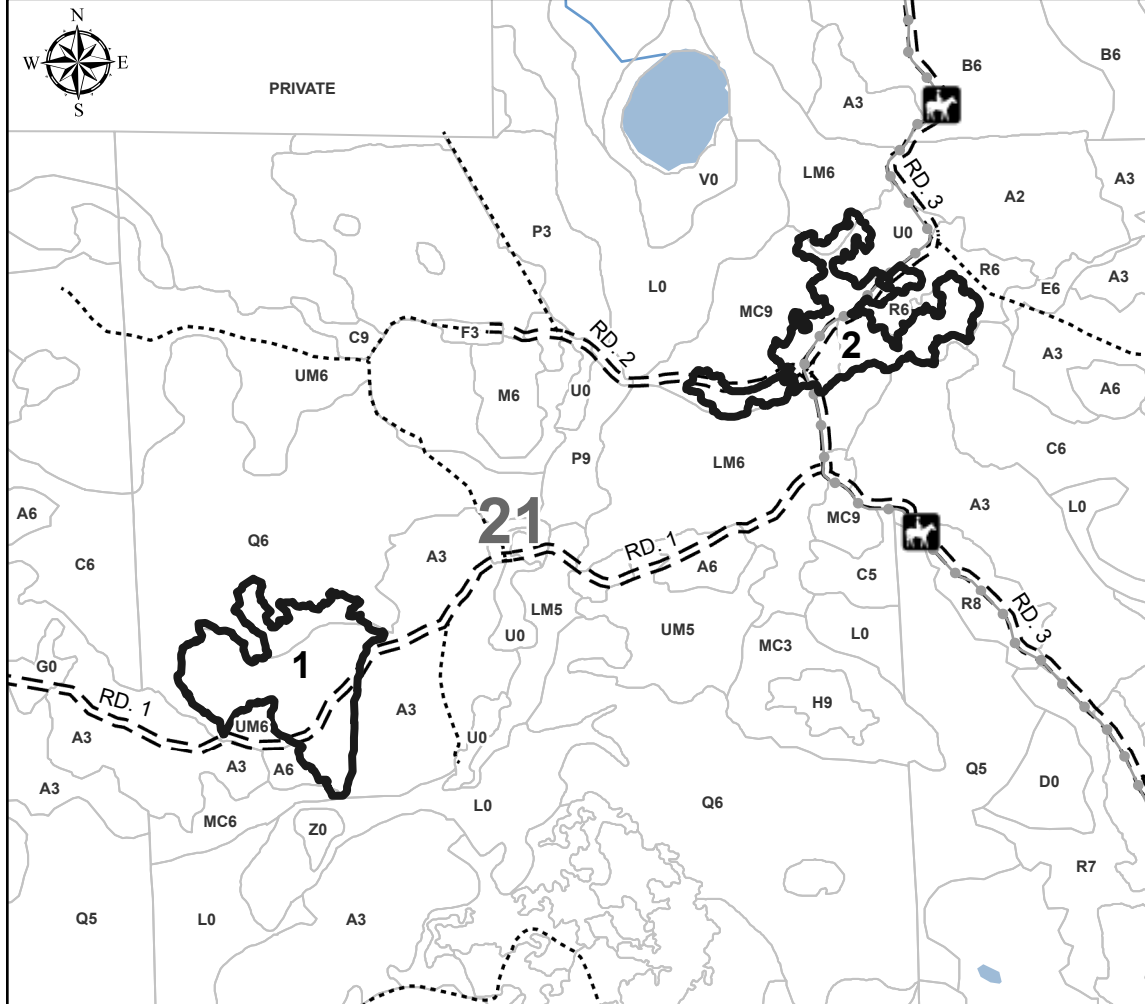
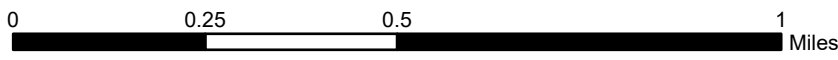
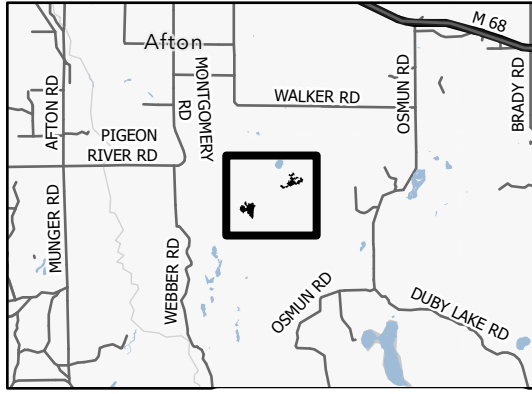
Cover Type			
A = Aspen	J = Jack Pine	O = Oak	U = Upland Brush
B = Paper Birch	K = Rock	P = Lowland Poplar	UM = Upland Mix Forest
C = Cedar	L = Lowland Brush	Q = Mixed Swamp Conifer	V = Bog or Marsh
D = Treed Bog	LM = Lowland Mix Forest	R = Red Pine	W = White Pine
E = Swamp Hardwoods	M = Maple, Beech, Birch	S = Black Spruce	X = Non Stocked
F = Spruce/Fir	MC = Mixed Conifer	T = Tamarack	Y = Sand
G = Grass	MD = Mixed Deciduous	Z = Water	
H = Hemlock	N = Marsh		

Density	
0 = Non Stocked	5 = Pole Timber Medium
1 = Seedling Sapling Poor	6 = Pole Timber Well
2 = Seedling Sapling Medium	7 = Saw Timber Poor
3 = Seedling Sapling Well	8 = Saw Timber Medium
4 = Pole Timber Poor	9 = Saw Timber Well

PU #	Acres
1	23.3
2	18.7

**Count to 4
Mix
42.0 Acres**

Locator Map 1:200,000



Legend

- Against State (Red)
- Stand Boundary
- Forest Access Route
- Administrative Access Only
- Recreational Trail
- Lakes
- Perennial River

Use QR Code to open Map in App

