



### TIMBER SALE MAP

This information provided by authority of Part 525, 1994 PA 451, as amended.

Sale Number <b>53-022-24</b>	Date <b>07/26/2024</b>	
Scale <b>1:10,000</b>	Page <b>1</b>	Of <b>1</b>

Forest Management Unit Pigeon River Country Mgt Unit	County Otsego	Mapped By: Barnes Cruised By: Barnes
---	------------------	---

Township 32N	Range 02W	Section(s) and Subdivision(s) Sec. 11 NENW; Sec. 2 S1/2SW,W1/2SE;
-----------------	--------------	---

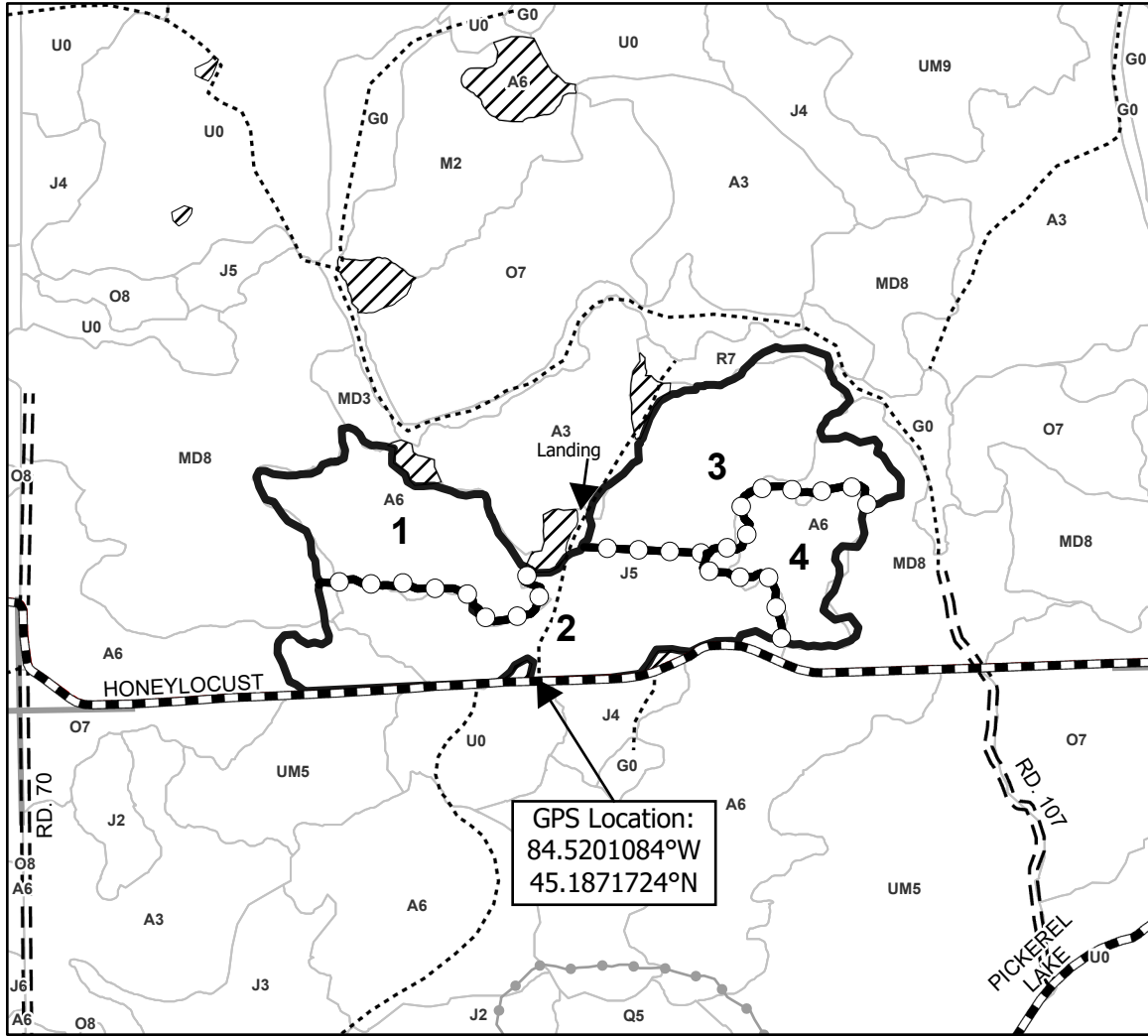
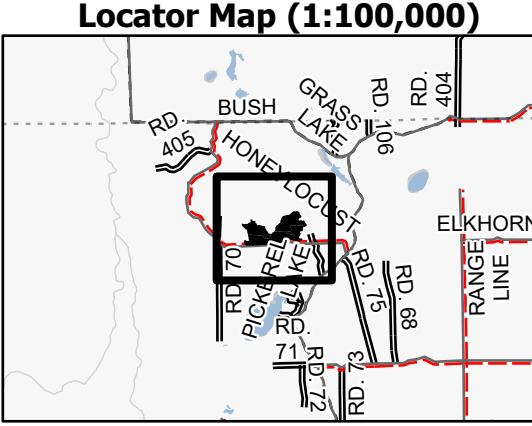
Cover Type			
A = Aspen	J = Jack Pine	O = Oak	U = Upland Brush
B = Paper Birch	K = Rock	P = Lowland Poplar	UM = Upland Mix Forest
C = Cedar	L = Lowland Brush	Q = Mixed Swamp Conifer	V = Bog or Marsh
D = Treed Bog	LM = Lowland Mix Forest	R = Red Pine	W = White Pine
E = Swamp Hardwoods	M = Maple, Beech, Birch	S = Black Spruce	X = Non Stocked
F = Spruce/Fir	MC = Mixed Conifer	T = Tamarack	Y = Sand
G = Grass	MD = Mixed Deciduous	Z = Water	
H = Hemlock	N = Marsh		

Density	
0 = Non Stocked	5 = Pole Timber Medium
1 = Seedling Sapling Poor	6 = Pole Timber Well
2 = Seedling Sapling Medium	7 = Saw Timber Poor
3 = Seedling Sapling Well	8 = Saw Timber Medium
4 = Pole Timber Poor	9 = Saw Timber Well

PU #	Acres
1	11.5
2	19.6
3	15.5
4	6.5

## Honeylocust Aspine 2

**53.1 Acres**



Legend	
	Against State - Red
	Stand
	Retention Areas
	Payment Unit (Yellow)
	Recreational Trail
	Gravel Road
	County Road - Seasonal
	Primary Forest Road
	Forest Access Route
	Administrative Access Only
	Paved Road
	Government Gravel/Dirt
	Private Gravel/Dirt
	Section Corners

Use QR Code to open Map in App

