



### TIMBER SALE MAP

This information provided by authority of Part 525, 1994 PA 451, as amended.

Sale Number <b>53-031-24</b>	Date 11/25/2024
Scale 1:15,840	Page 1
	Of 1

Forest Management Unit Pigeon River Country Mgt Unit	County Cheboygan	Mapped By: TSP
		Cruised By: Joy Mittig

Township 34N	Range 01W	Section(s) and Subdivision(s) Sec. 27 SWSW; Sec. 28 E1/2SW,S1/2SE;
-----------------	--------------	--

Cover Type			
A = Aspen	J = Jack Pine	O = Oak	U = Upland Brush
B = Paper Birch	K = Rock	P = Lowland Poplar	UM = Upland Mix Forest
C = Cedar	L = Lowland Brush	Q = Mixed Swamp Conifer	V = Bog or Marsh
D = Treed Bog	LM = Lowland Mix Forest	R = Red Pine	W = White Pine
E = Swamp Hardwoods	M = Maple, Beech, Birch	S = Black Spruce	X = Non Stocked
F = Spruce/Fir	MC = Mixed Conifer	T = Tamarack	Y = Sand
G = Grass	MD = Mixed Deciduous	Z = Water	
H = Hemlock	N = Marsh		

Density	
0 = Non Stocked	5 = Pole Timber Medium
1 = Seedling Sapling Poor	6 = Pole Timber Well
2 = Seedling Sapling Medium	7 = Saw Timber Poor
3 = Seedling Sapling Well	8 = Saw Timber Medium
4 = Pole Timber Poor	9 = Saw Timber Well

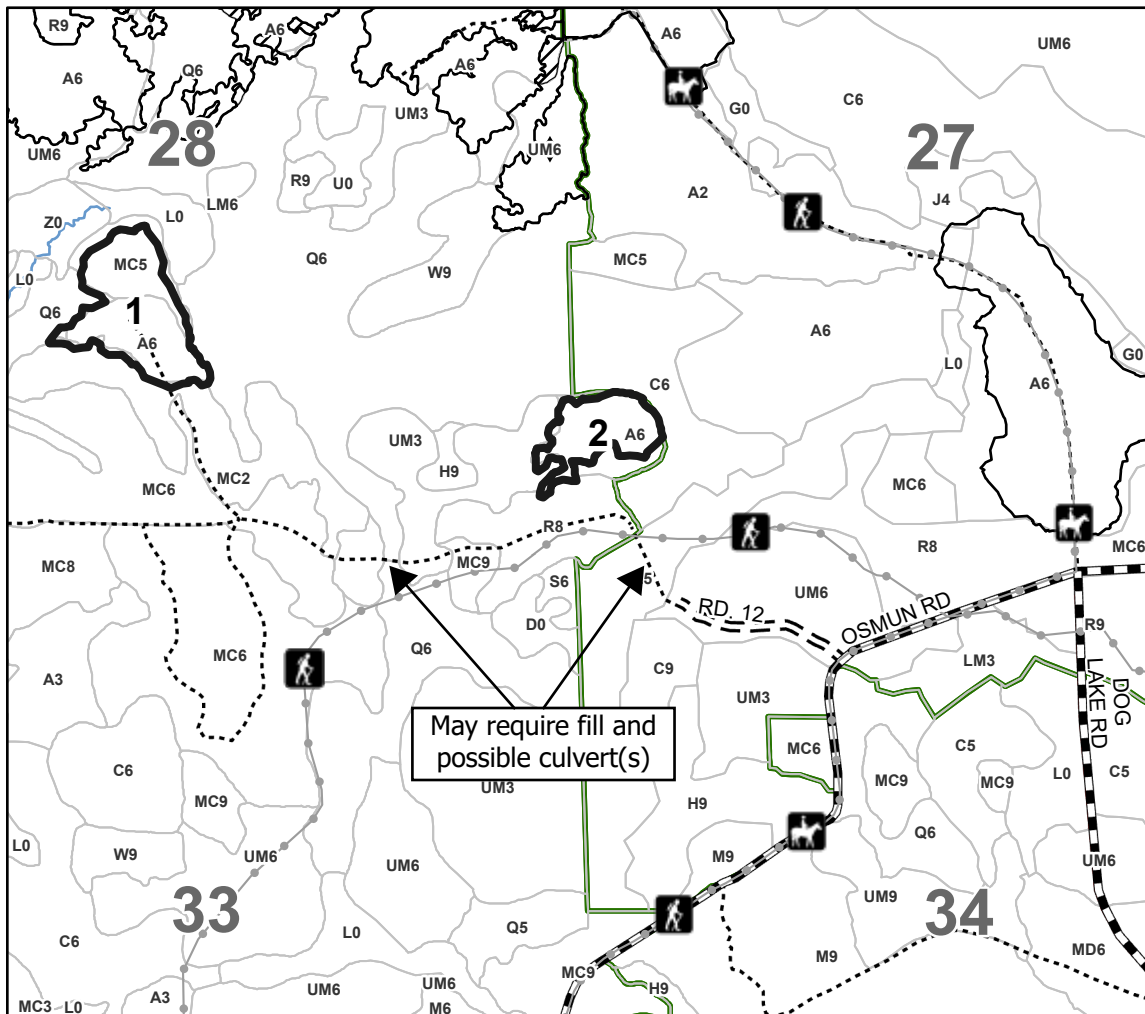
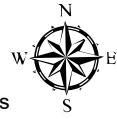
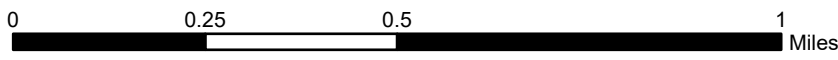
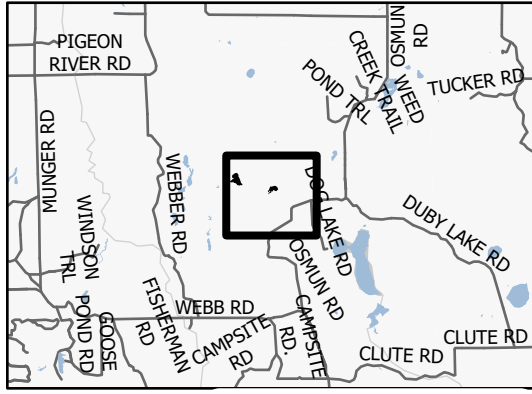
PU #	Acres
1	14
2	7.2

## Lobster Bisque

### 21.2 Acres

#### Compartment 3

### Locator Map 1:200,000



### Legend

- Against State (Red)
- Stand
- Nearby Timber Sale
- Forest Access Route
- Administrative Access Only
- Government Gravel/Dirt
- Recreational Trails
- Perennial Stream

Use QR Code to open Map in App

