



TIMBER SALE MAP

This information provided by authority of Part 525, 1994 PA 451, as amended.

| | | |
|---------------------------------|---------------------------|----------------|
| Sale Number 53-032-24 | Date 11/25/2024 | |
| Scale 1:10,000 | Page 1 | Of 1 |

| | | |
|---|---------------------|---------------------------|
| Forest Management Unit Pigeon River Country Mgt Unit | County Cheboygan | Mapped By: TSP |
| | | Cruised By: J. St. Pierre |

| | | |
|-----------------|--------------|--|
| Township 34N | Range 01W | Section(s) and Subdivision(s) Sec. 21 SESW,SWSE; Sec. 27 SWNW,NWSW; Sec. 28 NW,NE,NESW,NESE; |
|-----------------|--------------|--|

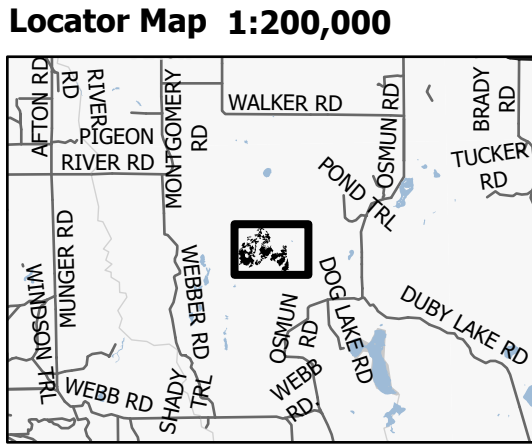
| Cover Type | | | |
|---------------------|-------------------------|-------------------------|------------------------|
| A = Aspen | J = Jack Pine | O = Oak | U = Upland Brush |
| B = Paper Birch | K = Rock | P = Lowland Poplar | UM = Upland Mix Forest |
| C = Cedar | L = Lowland Brush | Q = Mixed Swamp Conifer | V = Bog or Marsh |
| D = Treed Bog | LM = Lowland Mix Forest | R = Red Pine | W = White Pine |
| E = Swamp Hardwoods | M = Maple, Beech, Birch | S = Black Spruce | X = Non Stocked |
| F = Spruce/Fir | MC = Mixed Conifer | T = Tamarack | Y = Sand |
| G = Grass | MD = Mixed Deciduous | Z = Water | |
| H = Hemlock | N = Marsh | | |

| Density | |
|-----------------------------|------------------------|
| 0 = Non Stocked | 5 = Pole Timber Medium |
| 1 = Seedling Sapling Poor | 6 = Pole Timber Well |
| 2 = Seedling Sapling Medium | 7 = Saw Timber Poor |
| 3 = Seedling Sapling Well | 8 = Saw Timber Medium |
| 4 = Pole Timber Poor | 9 = Saw Timber Well |

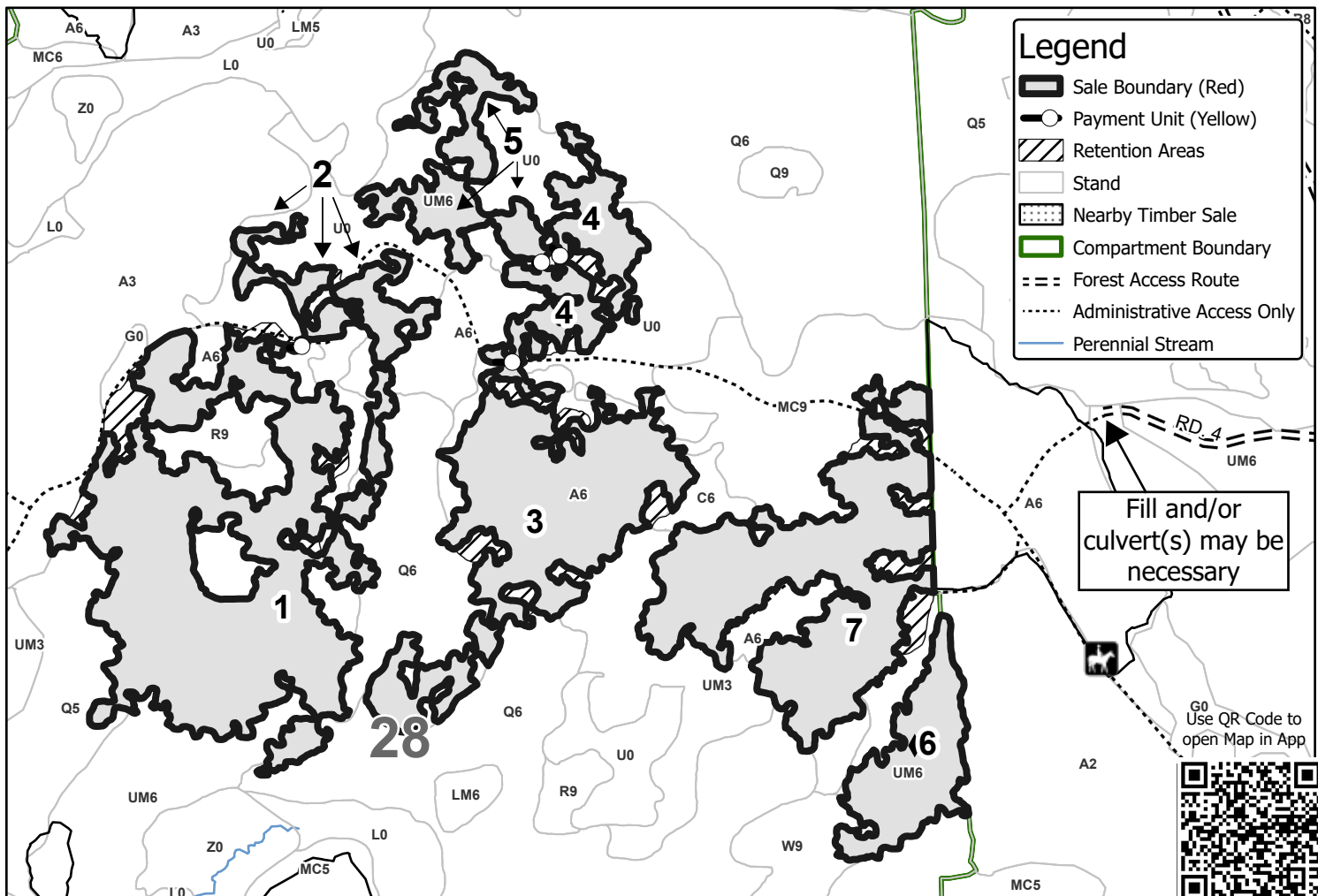
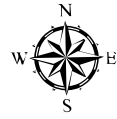
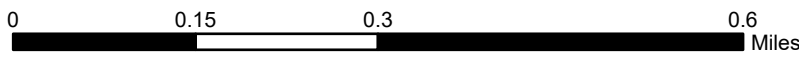
| PU # | Acres | PU # | Acres |
|------|-------|------|-------|
| 1 | 40.2 | 5 | 7.5 |
| 2 | 5.1 | 6 | 8.4 |
| 3 | 22.7 | 7 | 24.9 |
| 4 | 7.7 | | |

**Lumpy
Bumpy and
Stumpy**

116.5 Acres



Compartment 3



Fill and/or
culvert(s) may be
necessary

G0
Use QR Code to
open Map in App

