



TIMBER SALE MAP

This information provided by authority of Part 525, 1994 PA 451, as amended.

Sale Number 53-026-24	Date 07/23/2024	
Scale 1:7,920	Page 1	Of 1

Forest Management Unit Pigeon River Country Mgt Unit	County Cheboygan	Mapped By: Barnes
		Cruised By: Barnes

Township 33N	Range 01E	Section(s) and Subdivision(s) Sec. 25 SW; Sec. 26 E1/2SE;
-----------------	--------------	---

Cover Type			
A = Aspen	J = Jack Pine	O = Oak	U = Upland Brush
B = Paper Birch	K = Rock	P = Lowland Poplar	UM = Upland Mix Forest
C = Cedar	L = Lowland Brush	Q = Mixed Swamp Conifer	V = Bog or Marsh
D = Treed Bog	LM = Lowland Mix Forest	R = Red Pine	W = White Pine
E = Swamp Hardwoods	M = Maple, Beech, Birch	S = Black Spruce	X = Non Stocked
F = Spruce/Fir	MC = Mixed Conifer	T = Tamarack	Y = Sand
G = Grass	MD = Mixed Deciduous	Z = Water	
H = Hemlock	N = Marsh		

Density	
0 = Non Stocked	5 = Pole Timber Medium
1 = Seedling Sapling Poor	6 = Pole Timber Well
2 = Seedling Sapling Medium	7 = Saw Timber Poor
3 = Seedling Sapling Well	8 = Saw Timber Medium
4 = Pole Timber Poor	9 = Saw Timber Well

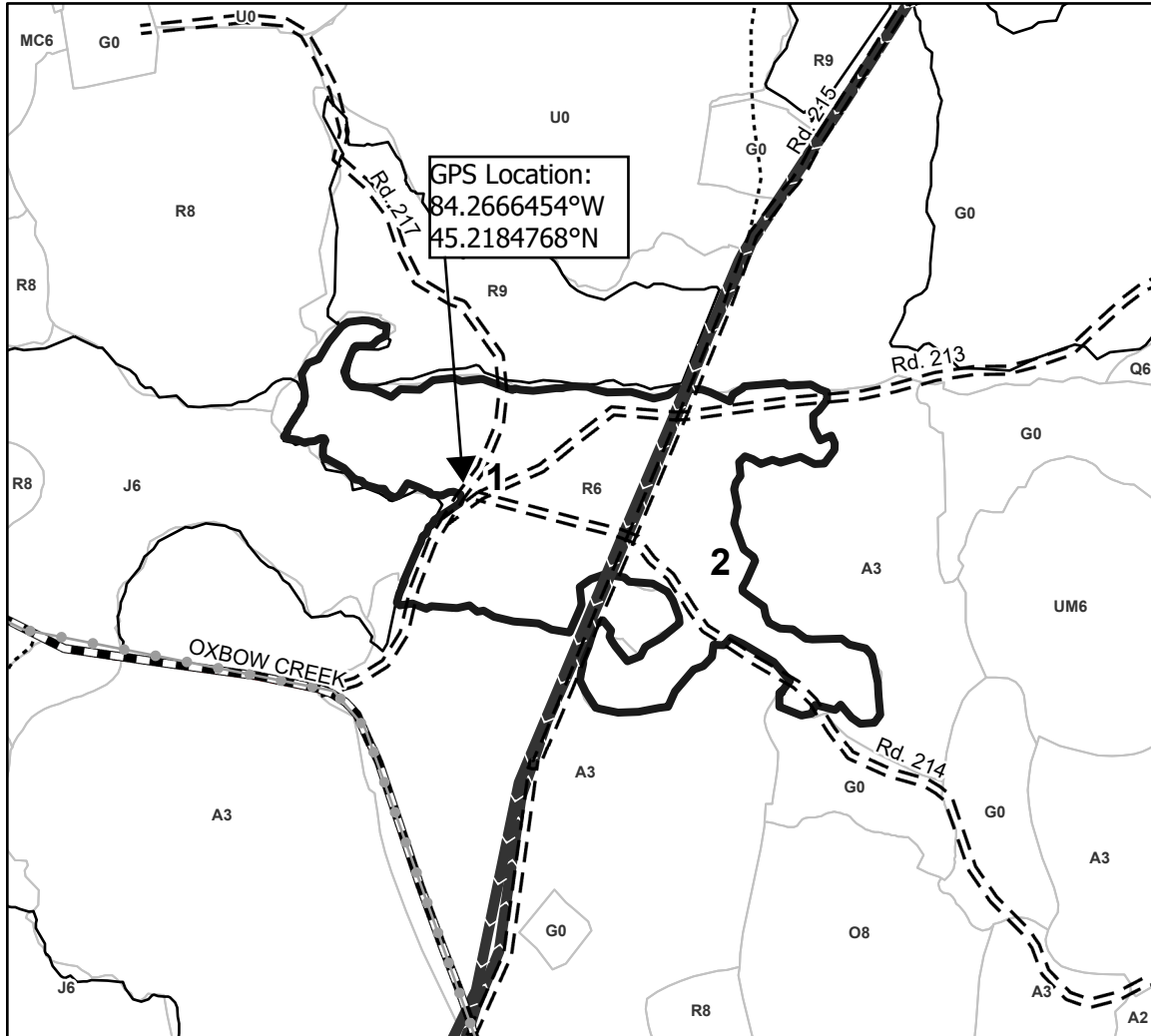
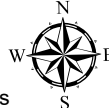
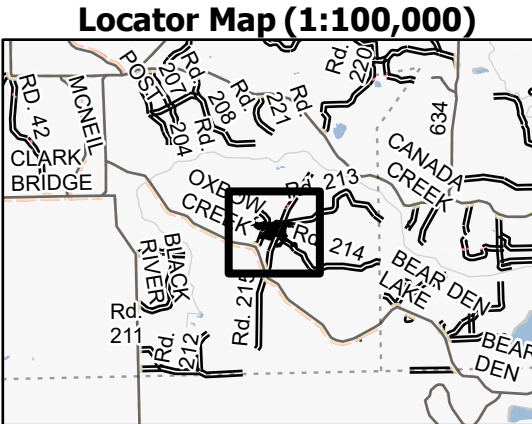
PU #	Acres
1	17
2	12

Map Note:

The pipeline road designates the payment unit boundary.

Pipeline Red Pine 2

29.0 Acres



Legend	
	Against State - Red
	Nearby Timber Sale
	Stand
	Retention Areas
	Recreational Trail
	Pipeline
	Primary Forest Road
	Forest Access Route
	Administrative Access Only
	Paved Road
	Government Gravel/Dirt
	Private Gravel/Dirt

Use QR Code to open Map in App

