

**TIMBER SALE MAP**

This information provided by authority of Part 525, 1994 PA 451, as amended.

Sale Number

53-024-25

Date

08/08/2025

Forest Management Unit

Pigeon River Country Mgt Unit

County

Otsego

Mapped By: Rekowski

Cruised By: Rekowski/Mittig

Scale

1:14,000

Page

1

Of

1

Township

31N

Range

01W

Section(s) and

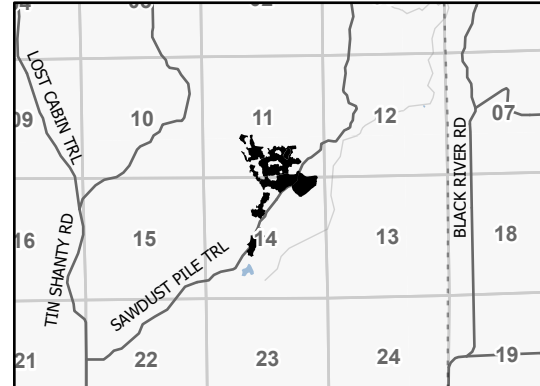
Subdivision(s) Sec. 11 E1/2SW,SE; Sec. 14 E1/2NW,N1/2NE,NESW;

Cover Type

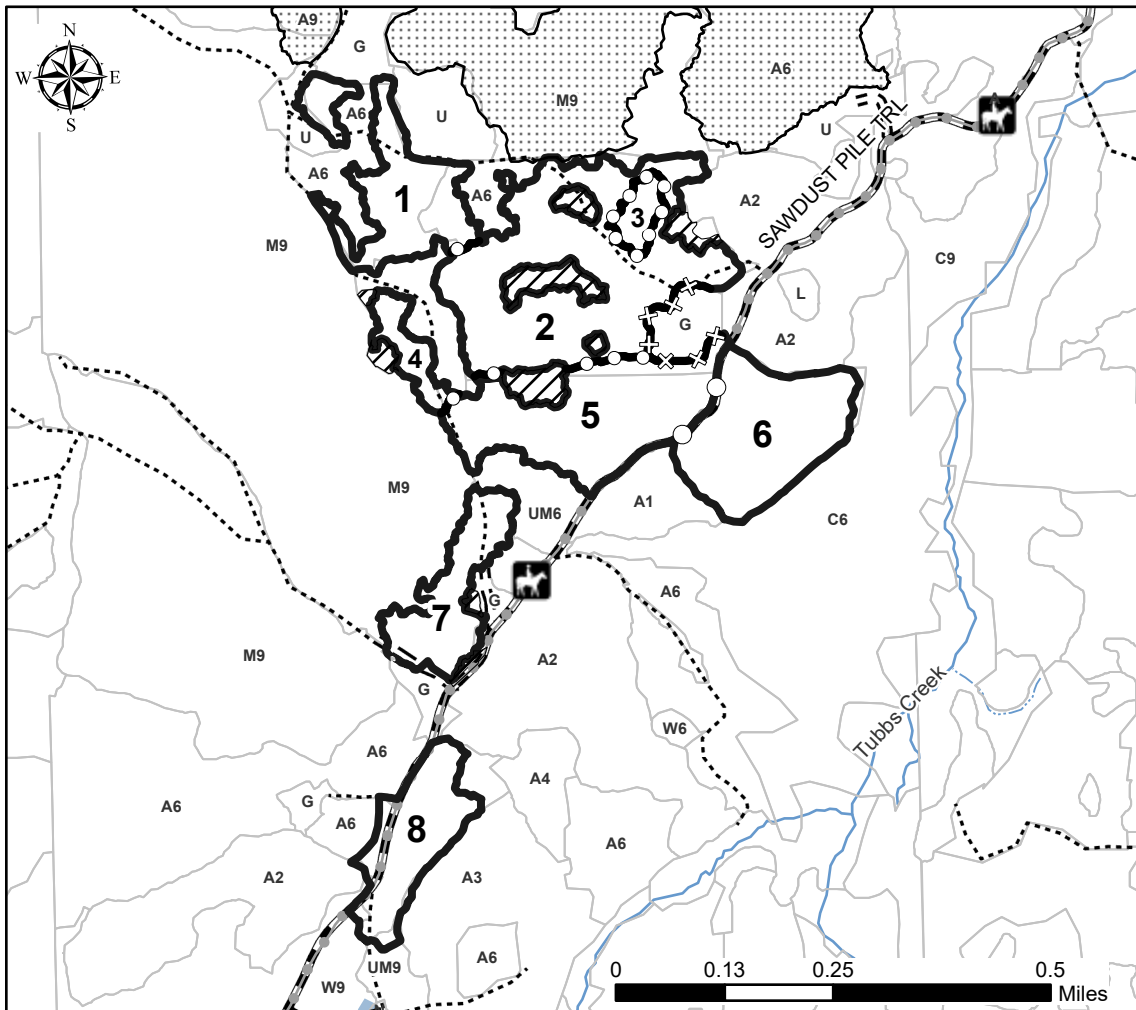
A = Aspen	J = Jack Pine	O = Oak	U = Upland Brush
B = Paper Birch	K = Rock	P = Lowland Poplar	UM = Upland Mix Forest
C = Cedar	L = Lowland Brush	Q = Mixed Swamp Conifer	V = Bog or Marsh
D = Treed Bog	LM = Lowland Mix Forest	R = Red Pine	W = White Pine
E = Swamp Hardwoods	M = Maple, Beech, Birch	S = Black Spruce	X = Non Stocked
F = Spruce/Fir	MC = Mixed Conifer	T = Tamarack	Y = Sand
G = Grass	MD = Mixed Deciduous	Z = Water	
H = Hemlock	N = Marsh		

Density

0 = Non Stocked	5 = Pole Timber Medium
1 = Seedling Sapling Poor	6 = Pole Timber Well
2 = Seedling Sapling Medium	7 = Saw Timber Poor
3 = Seedling Sapling Well	8 = Saw Timber Medium
4 = Pole Timber Poor	9 = Saw Timber Well

Locator Map 1:100,000

Payment Unit Number	Acres	Payment Unit Number	Acres
1	12.7	5	18.8
2	30.2	6	16.2
3	2.2	7	8.9
4	3.3	8	10.4

Ice Bee Buzz Aspen**102.7 Acres****Legend**

- Against State (Red)
- Against State (Unpainted)
- Payment Unit (Yellow)
- Payment Unit (Road)
- Retention Areas (Red)
- Nearby Timber Sales
- Recreational Trails
- Forest Access Route
- Administrative Access Only
- Government Gravel/Dirt
- Intermittent Stream
- Perennial River

Use QR Code to open Map in App

