



TIMBER SALE MAP

This information provided by authority of Part 525, 1994 PA 451, as amended.

Sale Number

53-027-25

Date

08/10/2025

Forest Management Unit

Pigeon River Country Mgt Unit

County

Cheboygan

Mapped By: Mittig

Cruised By: Shingleton Unit Staff

Scale

1:11,000

Page

2

Of

2

Township

32N / 33N

Range

01E

Section(s) and

Subdivision(s) **Sec. 30 E1/2SE; Sec. 31 N1/2SW,SESW,SE; Sec. 6 W1/2NE;**

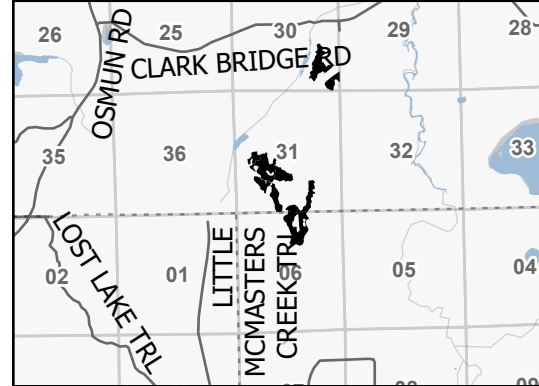
Cover Type

A = Aspen	J = Jack Pine	O = Oak	U = Upland Brush
B = Paper Birch	K = Rock	P = Lowland Poplar	UM = Upland Mix Forest
C = Cedar	L = Lowland Brush	Q = Mixed Swamp Conifer	V = Bog or Marsh
D = Treed Bog	LM = Lowland Mix Forest	R = Red Pine	W = White Pine
E = Swamp Hardwoods	M = Maple, Beech, Birch	S = Black Spruce	X = Non Stocked
F = Spruce/Fir	MC = Mixed Conifer	T = Tamarack	Y = Sand
G = Grass	MD = Mixed Deciduous	Z = Water	
H = Hemlock	N = Marsh		

Density

0 = Non Stocked	5 = Pole Timber Medium
1 = Seedling Sapling Poor	6 = Pole Timber Well
2 = Seedling Sapling Medium	7 = Saw Timber Poor
3 = Seedling Sapling Well	8 = Saw Timber Medium
4 = Pole Timber Poor	9 = Saw Timber Well

Locator Map 1:100,000

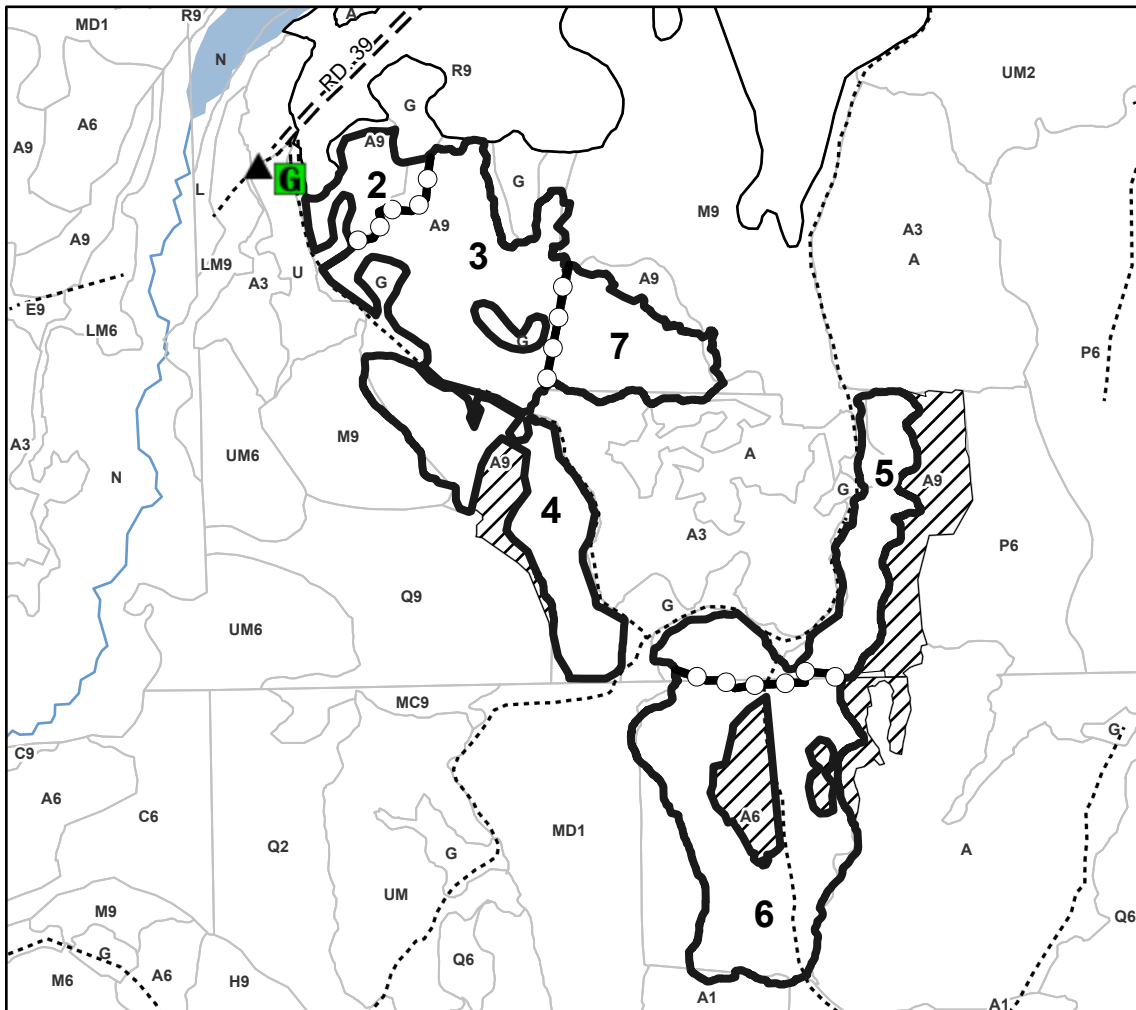


Payment Unit Number	Acres	Payment Unit Number	Acres
1	20.9	5	11.3
2	4.1	6	21
3	16.9	7	7.9
4	13.2		

**Ice Hurdle
Aspen**

95.3 Acres

0 0.17 0.35 0.7 Miles



Legend

- Against State (Red)
- Payment Unit (Yellow)
- Stand
- Retention Areas
- Nearby Timber Sale
- Forest Access Route
- Administrative Access Only
- Berm
- Gate

Use QR Code to
open Map in App

