



TIMBER SALE MAP

This information provided by authority of Part 525, 1994 PA 451, as amended.

Sale Number 53-023-25	Date 08/08/2025	
Scale 1:10,000	Page 2	Of 2

Forest Management Unit Pigeon River Country Mgt Unit	County Cheboygan	Mapped By: Mittig
		Cruised By: Mittig

Township 33N	Range 01W	Section(s) and Subdivision(s) Sec. 24 SESW; Sec. 25 E1/2NW,NWNE;
-----------------	--------------	--

Cover Type			
A = Aspen	J = Jack Pine	O = Oak	U = Upland Brush
B = Paper Birch	K = Rock	P = Lowland Poplar	UM = Upland Mix Forest
C = Cedar	L = Lowland Brush	Q = Mixed Swamp Conifer	V = Bog or Marsh
D = Treed Bog	LM = Lowland Mix Forest	R = Red Pine	W = White Pine
E = Swamp Hardwoods	M = Maple, Beech, Birch	S = Black Spruce	X = Non Stocked
F = Spruce/Fir	MC = Mixed Conifer	T = Tamarack	Y = Sand
G = Grass	MD = Mixed Deciduous	Z = Water	
H = Hemlock	N = Marsh		

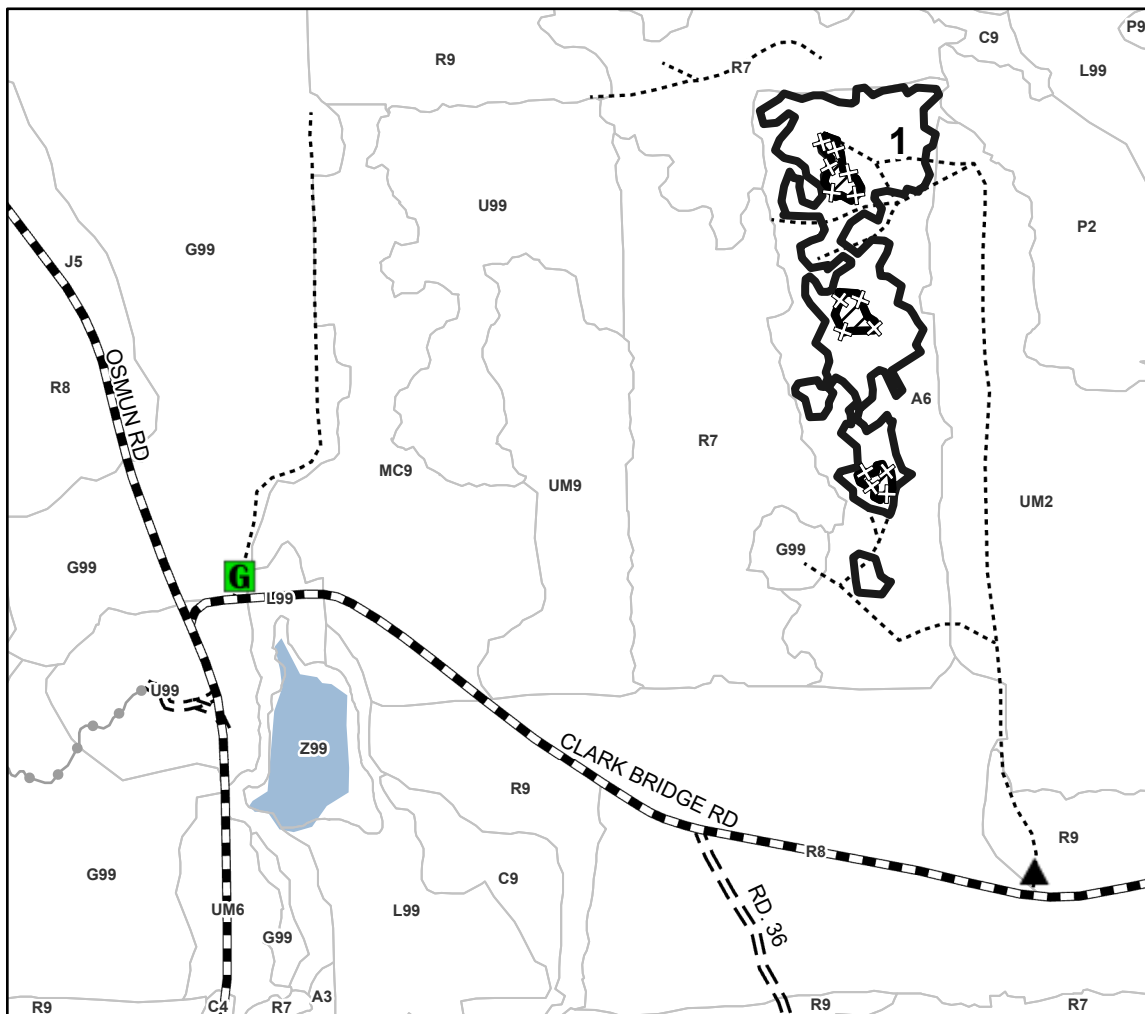
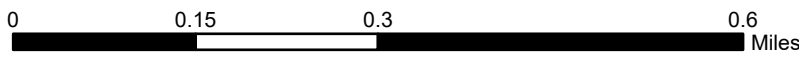
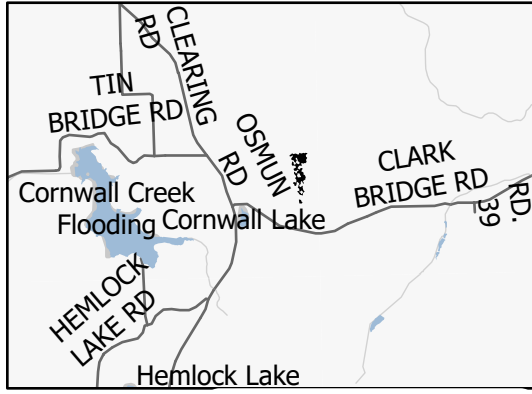
Density	
0 = Non Stocked	5 = Pole Timber Medium
1 = Seedling Sapling Poor	6 = Pole Timber Well
2 = Seedling Sapling Medium	7 = Saw Timber Poor
3 = Seedling Sapling Well	8 = Saw Timber Medium
4 = Pole Timber Poor	9 = Saw Timber Well

Payment Unit Number	Acres
1	13.6

Ice Jigsaw Aspen

13.6 Acres

Locator Map 1:100,000



Legend

- Against State (Red)
- Rentention Areas (Red Xs)
- Forest Access Route
- Administrative Access Only
- Government Gravel/Dirt
- Recreational Trails
- Berm
- Gate

Use QR Code to open Map in App

