

**TIMBER SALE MAP**

This information provided by authority of Part 525, 1994 PA 451, as amended.

Sale Number

**53-020-25**

Date

**06/27/2025**

Forest Management Unit

County

Mapped By: Rekowski

Scale

**1:15,840**

Page

**1**

Of

**2**

Pigeon River Country Mgt Unit

Otsego

Cruised By: Rekowski

Township

**31N**

Range

**01W**

Section(s) and

Subdivision(s)

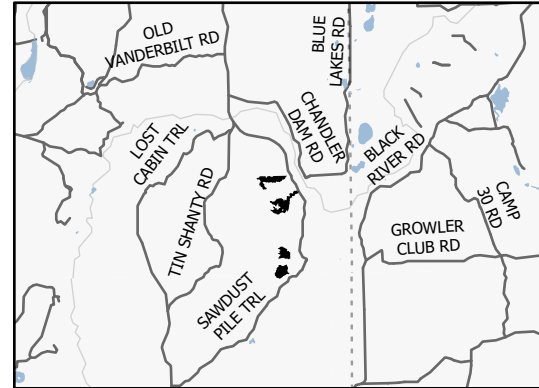
Sec. 1 SWNW; Sec. 11 E1/2NE,N1/2SE; Sec. 12 SWNW; Sec. 2 NENW,NE,N1/2SE;

**Cover Type**

A = Aspen	J = Jack Pine	O = Oak	U = Upland Brush
B = Paper Birch	K = Rock	P = Lowland Poplar	UM = Upland Mix Forest
C = Cedar	L = Lowland Brush	Q = Mixed Swamp Conifer	V = Bog or Marsh
D = Treed Bog	LM = Lowland Mix Forest	R = Red Pine	W = White Pine
E = Swamp Hardwoods	M = Maple, Beech, Birch	S = Black Spruce	X = Non Stocked
F = Spruce/Fir	MC = Mixed Conifer	T = Tamarack	Y = Sand
G = Grass	MD = Mixed Deciduous	Z = Water	
H = Hemlock	N = Marsh		

**Density**

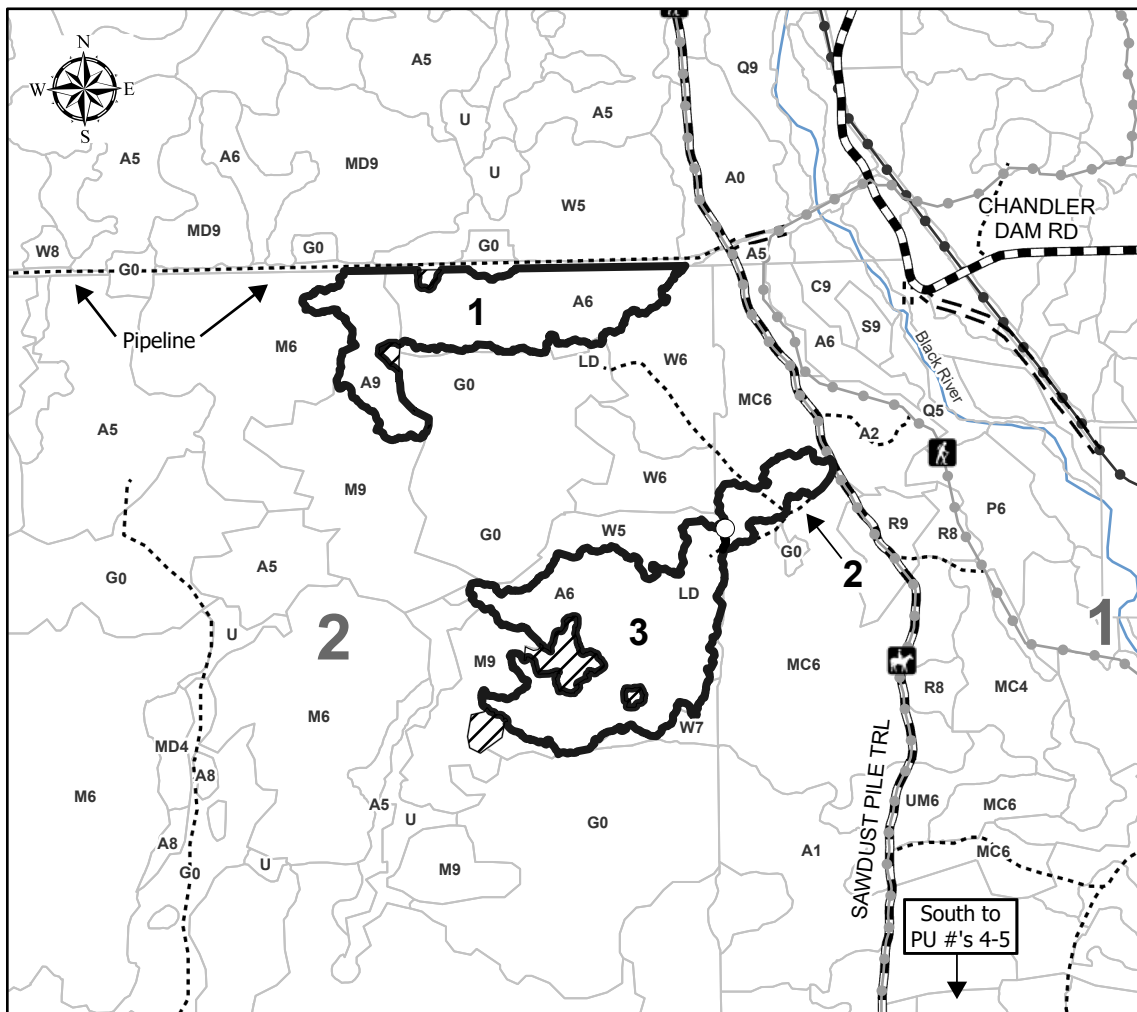
0 = Non Stocked	5 = Pole Timber Medium
1 = Seedling Sapling Poor	6 = Pole Timber Well
2 = Seedling Sapling Medium	7 = Saw Timber Poor
3 = Seedling Sapling Well	8 = Saw Timber Medium
4 = Pole Timber Poor	9 = Saw Timber Well

**Locator Map 1:200,000**

Payment Unit Number	Acres
1	30.1
2	5.5
3	36.1
4	18.3
5	22.7

**Ice and Sawdust****112.8 Acres**

0 0.13 0.25 0.5 Miles

**Legend**

- Against State (Red)
- Payment Unit (Yellow)
- Retention Areas (Red)
- Stand Boundary
- Forest Access Route
- Administrative Access Only
- Government Gravel/Dirt
- Powerline
- Recreational Trails
- Perennial River

Use QR Code to open Map in App

