

**TIMBER SALE MAP**

This information provided by authority of Part 525, 1994 PA 451, as amended.

Sale Number  
**53-028-25**Date  
**08/28/2025**

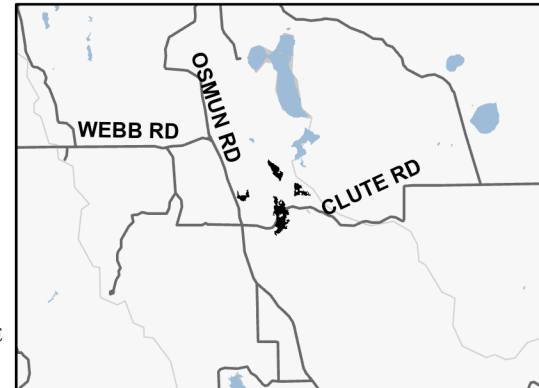
Forest Management Unit	County	Mapped By: J. St Pierre	Scale	Page	Of
Pigeon River Country Mgt Unit	Cheboygan	Cruised By: J. St Pierre, C. Osborn	1:15,840	1	1
Township	Range	Section(s) and Subdivision(s)			
33N	01W	Sec. 10 NESE; Sec. 11 N1/2NW,SESW,SWNE,E1/2SW,NWSE; Sec. 14 NENW;			

**Cover Type**

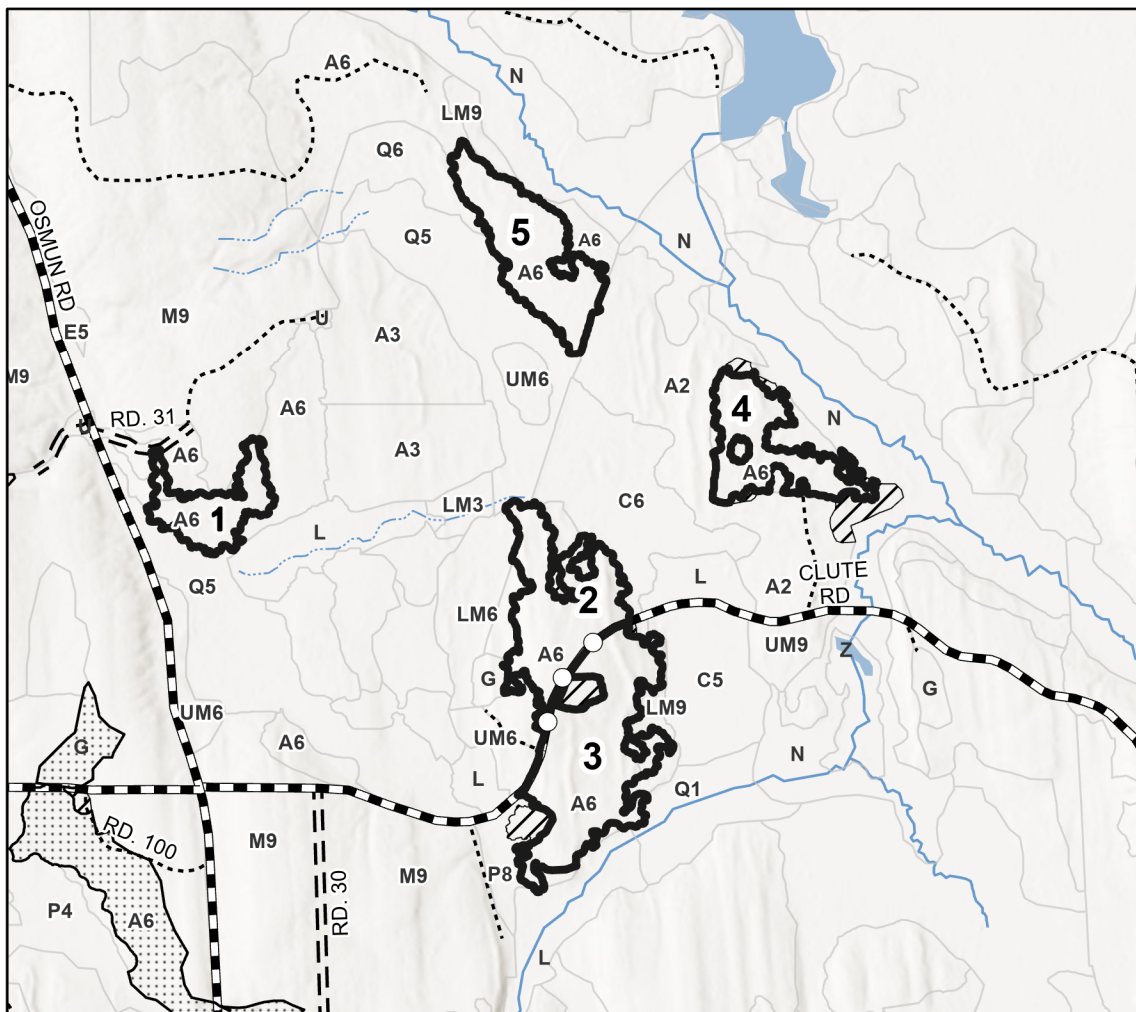
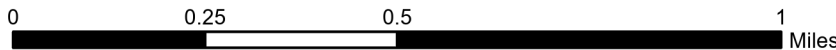
A = Aspen	J = Jack Pine	O = Oak	U = Upland Brush
B = Paper Birch	K = Rock	P = Lowland Poplar	UM = Upland Mix Forest
C = Cedar	L = Lowland Brush	Q = Mixed Swamp Conifer	V = Bog or Marsh
D = Treed Bog	LM = Lowland Mix Forest	R = Red Pine	W = White Pine
E = Swamp Hardwoods	M = Maple, Beech, Birch	S = Black Spruce	X = Non Stocked
F = Spruce/Fir	MC = Mixed Conifer	T = Tamarack	Y = Sand
G = Grass	MD = Mixed Deciduous		Z = Water
H = Hemlock	N = Marsh		

**Density**

0 = Non Stocked	5 = Pole Timber Medium
1 = Seedling Sapling Poor	6 = Pole Timber Well
2 = Seedling Sapling Medium	7 = Saw Timber Poor
3 = Seedling Sapling Well	8 = Saw Timber Medium
4 = Pole Timber Poor	9 = Saw Timber Well

**Locator Map 1:50,000**

Payment Unit Number	Acres
1	7
2	14.6
3	21.5
4	10.4
5	13.6

**Ice Creamed Aspen****67.1 Acres****Legend**

- Against State - Red
- Retention Areas
- Nearby Timber Sale
- Lakes and Rivers
- Payment Unit (Road)
- Recreational Trails
- Forest Access Route
- Administrative Access Only
- Government Gravel/Dirt
- Intermittent Stream
- Perennial River

Use QR Code to  
open Map in App