



### TIMBER SALE MAP

This information provided by authority of Part 525, 1994 PA 451, as amended.

Sale Number <b>53-003-25</b>	Date <b>10/31/2024</b>	
Scale <b>1:15,840</b>	Page <b>1</b>	Of <b>1</b>

Forest Management Unit Pigeon River Country Mgt Unit	County Otsego	Mapped By: Rekowski
		Cruised By: Rekowski/Mittig/JSP/Barnes

Township 32N	Range 02W	Section(s) and Subdivision(s) Sec. 1 NW,N1/2NE,SWNE; Sec. 2 SENE;
-----------------	--------------	---

Cover Type			
A = Aspen	J = Jack Pine	O = Oak	U = Upland Brush
B = Paper Birch	K = Rock	P = Lowland Poplar	UM = Upland Mix Forest
C = Cedar	L = Lowland Brush	Q = Mixed Swamp Conifer	V = Bog or Marsh
D = Treed Bog	LM = Lowland Mix Forest	R = Red Pine	W = White Pine
E = Swamp Hardwoods	M = Maple, Beech, Birch	S = Black Spruce	X = Non Stocked
F = Spruce/Fir	MC = Mixed Conifer	T = Tamarack	Y = Sand
G = Grass	MD = Mixed Deciduous	Z = Water	
H = Hemlock	N = Marsh		

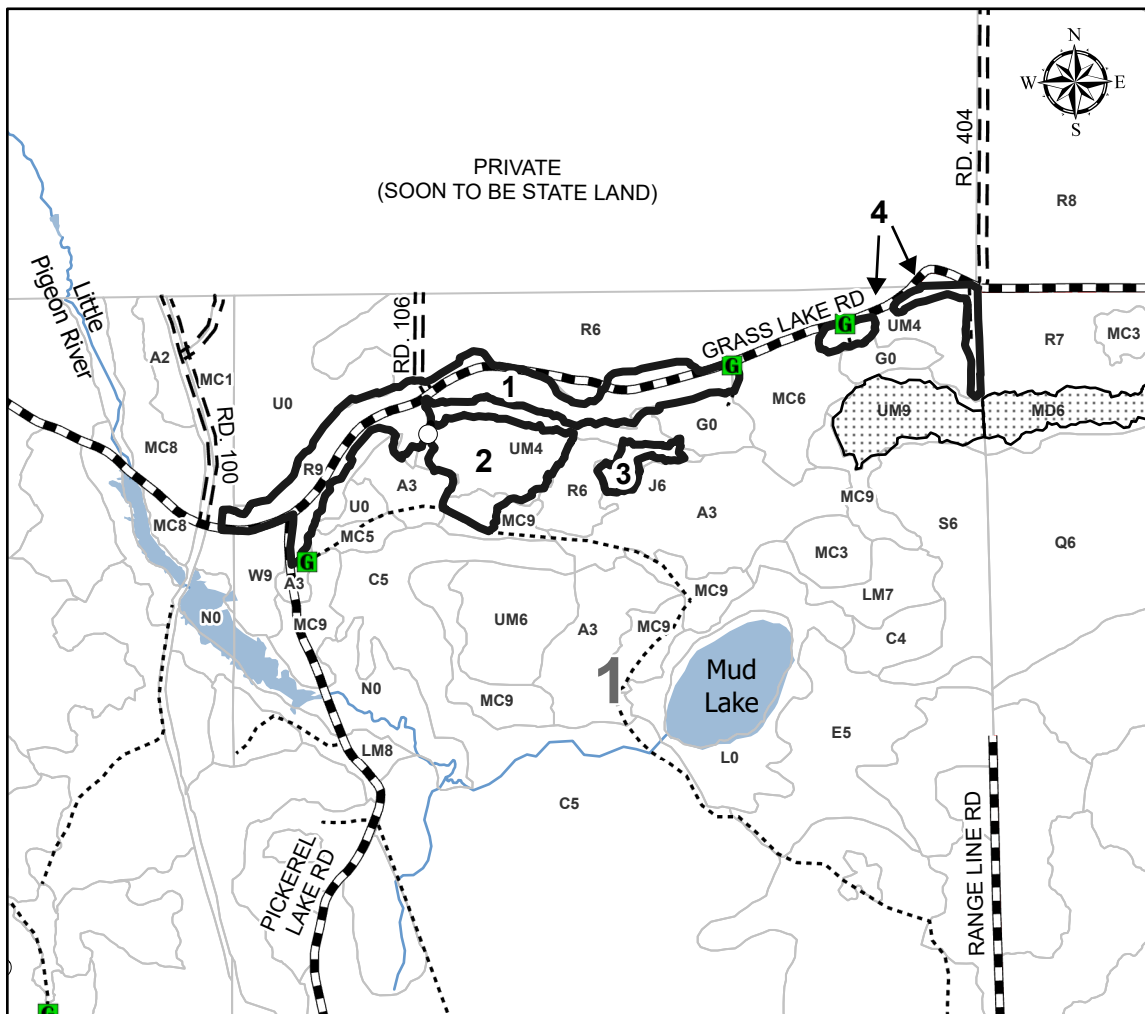
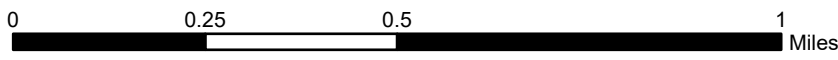
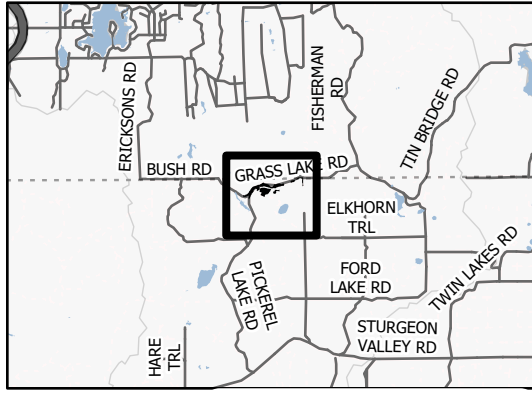
Density	
0 = Non Stocked	5 = Pole Timber Medium
1 = Seedling Sapling Poor	6 = Pole Timber Well
2 = Seedling Sapling Medium	7 = Saw Timber Poor
3 = Seedling Sapling Well	8 = Saw Timber Medium
4 = Pole Timber Poor	9 = Saw Timber Well

PU #	Acres
1	23.2
2	11.3
3	2.1
4	3.7

## Tommy's Pine Tree Perfume

### 40.3 Acres

### Locator Map 1:200,000



### Legend

- Against State (Red)
- Payment Unit (Yellow)
- Stand Boundary
- Nearby Timber Sale
- Forest Access Route
- Administrative Access Only
- Paved Road
- Government Gravel/Dirt
- Lakes
- Perennial River
- Gate

Use QR Code to open Map in App

