



TIMBER SALE MAP

This information provided by authority of Part 525, 1994 PA 451, as amended.

Sale Number 71-009-24	Date 02/13/2024	
Scale 1:15,840	Page 1	Of 1

Forest Management Unit Roscommon Mgt Unit	County Roscommon	Mapped By: Lewicki
		Cruised By:

Township 21N	Range 03W	Section(s) and Subdivision(s) Sec. 17 N1/2SW,SESW,N1/2SE,SWSE; Sec. 17 NENW,S1/2NW,NWNE,S1/2NE;
------------------------	---------------------	--

Cover Type			
A = Aspen	J = Jack Pine	O = Oak	U = Upland Brush
B = Paper Birch	K = Rock	P = Lowland Poplar	UM = Upland Mix Forest
C = Cedar	L = Lowland Brush	Q = Mixed Swamp Conifer	V = Bog or Marsh
D = Treed Bog	LM = Lowland Mix Forest	R = Red Pine	W = White Pine
E = Swamp Hardwoods	M = Maple, Beech, Birch	S = Black Spruce	X = Non Stocked
F = Spruce/Fir	MC = Mixed Conifer	T = Tamarack	Y = Sand
G = Grass	MD = Mixed Deciduous	Z = Water	
H = Hemlock	N = Marsh		

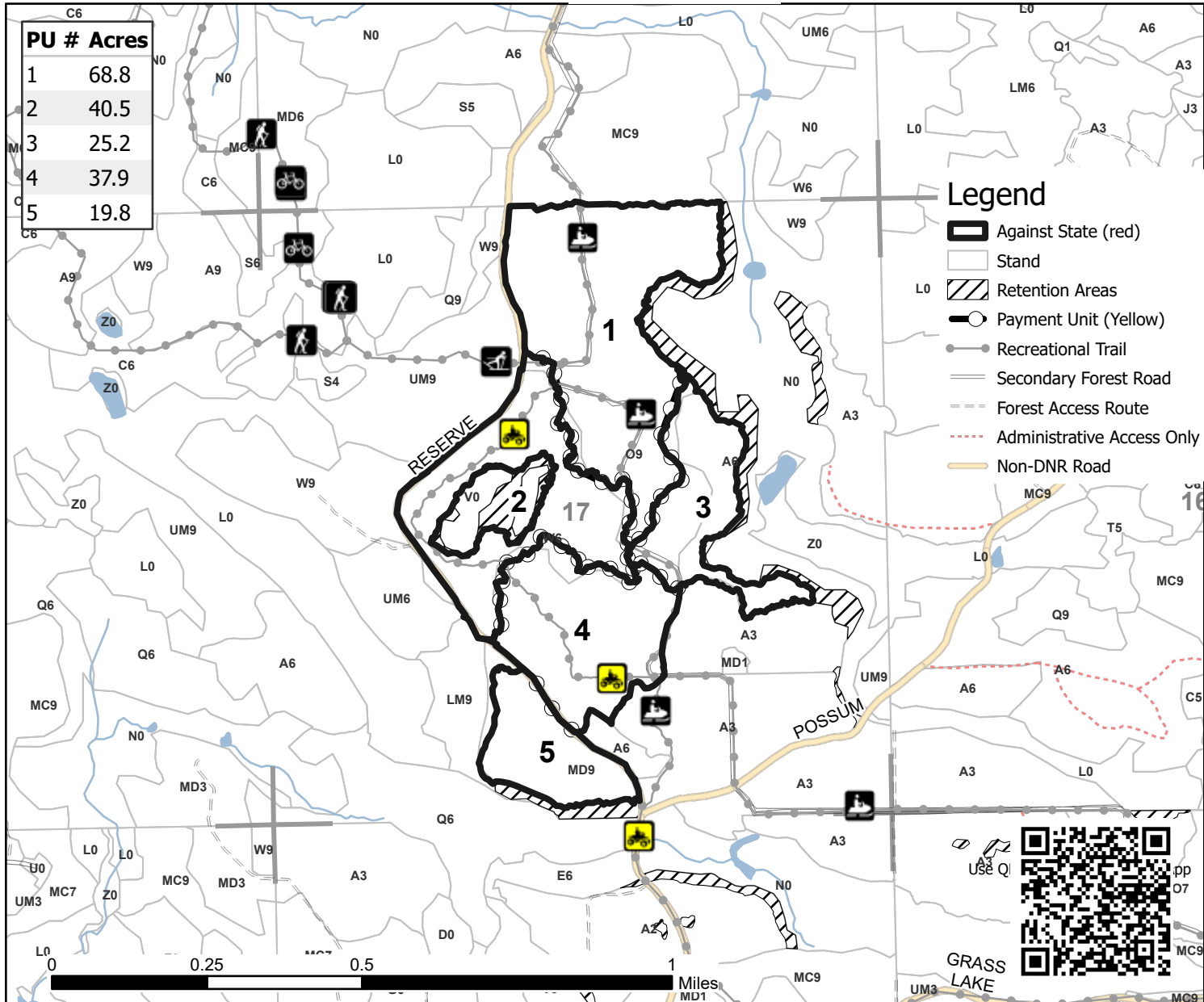
Density	
0 = Non Stocked	5 = Pole Timber Medium
1 = Seedling Sapling Poor	6 = Pole Timber Well
2 = Seedling Sapling Medium	7 = Saw Timber Poor
3 = Seedling Sapling Well	8 = Saw Timber Medium
4 = Pole Timber Poor	9 = Saw Timber Well

Lost Twin Lakes

192.2 Acres



PU #	Acres
1	68.8
2	40.5
3	25.2
4	37.9
5	19.8



Legend

- Against State (red)
- Stand
- Retention Areas
- Payment Unit (Yellow)
- Recreational Trail
- Secondary Forest Road
- Forest Access Route
- Administrative Access Only
- Non-DNR Road

GRASS LAKE



pp 07