



TIMBER SALE MAP

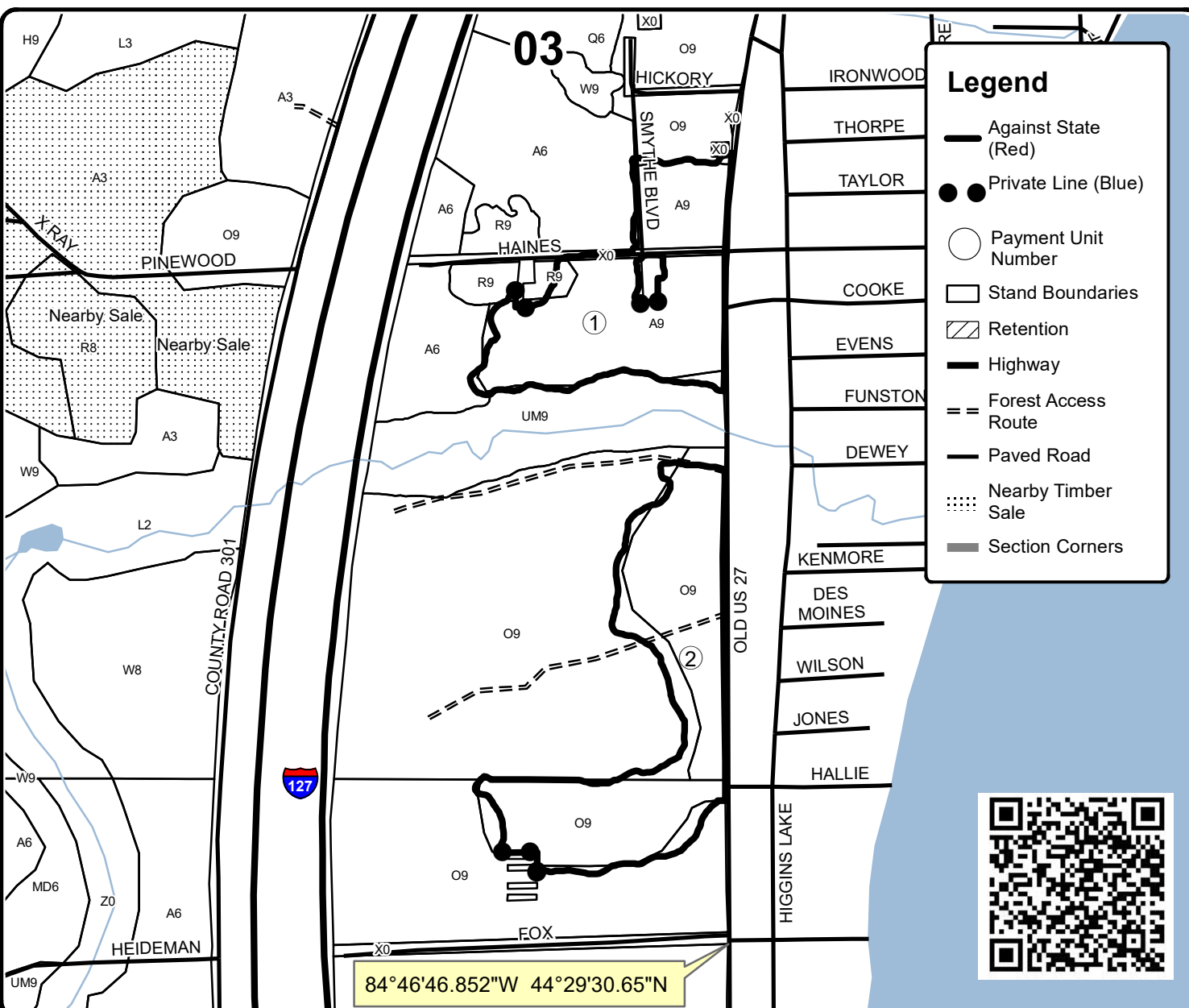
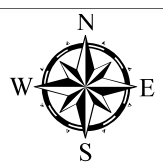
This information provided by authority of Part 525, 1994 PA 451, as amended.

Forest Management Unit Roscommon		County Roscommon	Mapped By Martell	Date 9/28/20	Page 1	of 1
Township 24N	Range 04W	Section(s) and Subdivision(s) SEC. 3 - SWNE,E1/2SW,SWSE; Sec. 10 - NWNE		Scale 1:7,920		

Cover Type				Density	
A = Aspen	H = Hemlock	N = Marsh	U = Upland Brush	0 = Non Stocked	5 = Pole Timber Medium
B = Paper Birch	J = Jack Pine	O = Oak	UM = Upland Mixed	1 = Seedling Sapling Poor	6 = Pole Timber Well
C = Cedar	L = Lowland Brush	P = Lowland Poplar	V = Bog or Marsh	2 = Seedling Sapling Medium	7 = Saw Timber Poor
D = Treed Bog	LM = Lowland Mixed	Q = Mixed Swamp Conifer	W = White Pine	3 = Seedling Sapling Well	8 = Saw Timber Medium
E = Swamp Hdwoods	M = Mpl, Bch, Brch	R = Red Pine	X = Non Stocked	4 = Pole Timber Poor	9 = Saw Timber Well
F = Spruce Fir	MC = Mixed Conifer	S = Black Spruce	Z = Water		
G = Grass	MD = Mixed Deciduous	T = Tamarack			

PU	Acres
1	14.7
2	17.2

Michigan Central Park Compartment 2 31.9 Acres



Legend

- Against State (Red)
- Private Line (Blue)
- Payment Unit Number
- Stand Boundaries
- Retention
- Highway
- Forest Access Route
- Paved Road
- Nearby Timber Sale
- Section Corners

