



TIMBER SALE MAP

This information provided by authority of Part 525, 1994 PA 451, as amended.

Sale Number 45-009-23	Date 08/24/2023
Scale 1:15,840	Page 2
	Of 2

Forest Management Unit Sault Ste Marie Mgt Unit	County Chippewa	Mapped By: Fanelli
		Cruised By: Fanelli/Brinks

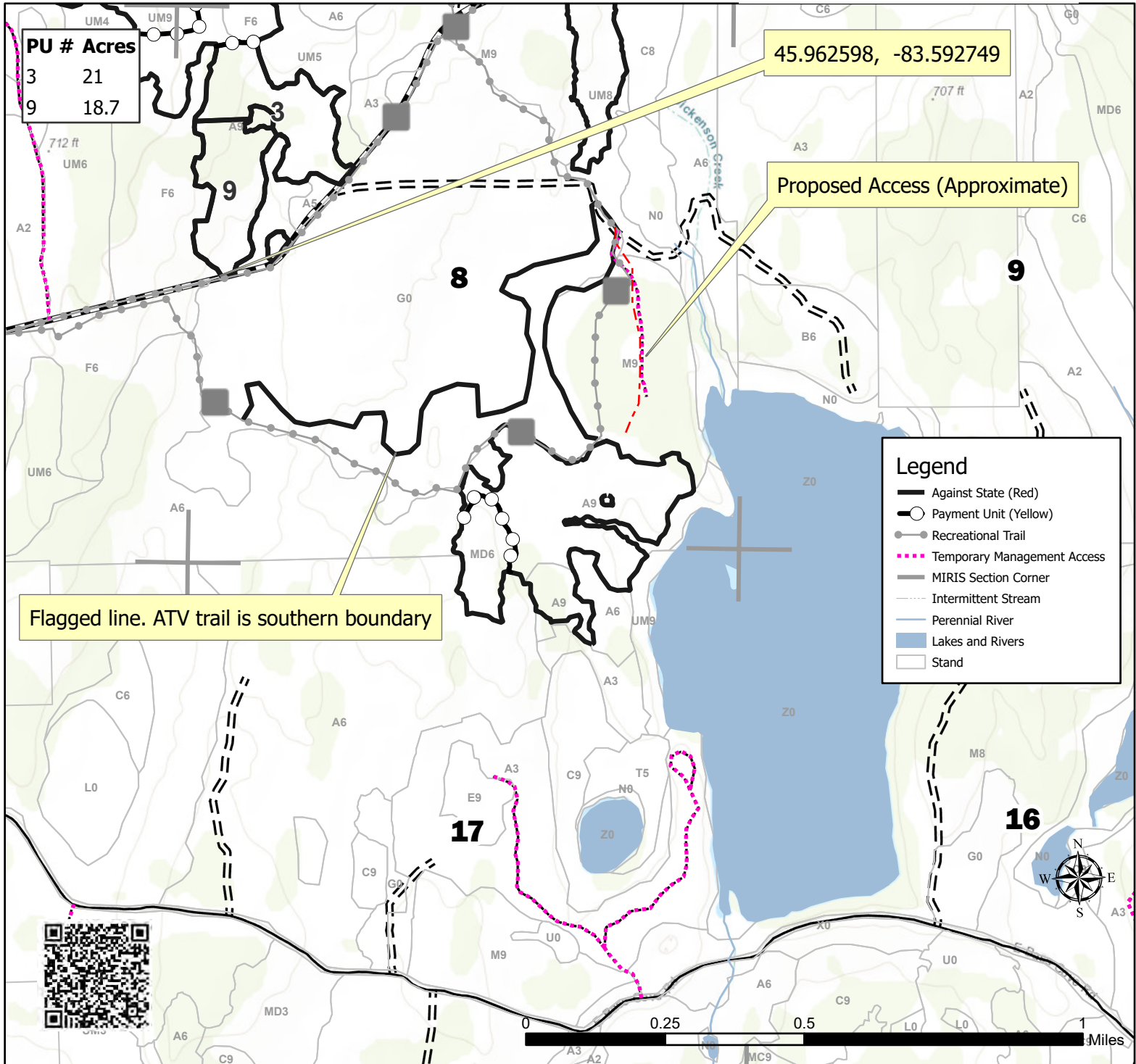
Township 41N	Range 07E	Section(s) and Subdivision(s) Sec. 17 NENW,N1/2NE; Sec. 4 W1/2NE,E1/2SW,W1/2SE; Sec. 5 NWSW,S1/2SW,SE; Sec. 6 NESE,S1/2SE; Sec. 7 NENE; Sec. 8 NW,NE,SESW,S1/2SE;
------------------------	---------------------	---

Cover Type			
A = Aspen	J = Jack Pine	O = Oak	U = Upland Brush
B = Paper Birch	K = Rock	P = Lowland Poplar	UM = Upland Mix Forest
C = Cedar	L = Lowland Brush	Q = Mixed Swamp Conifer	V = Bog or Marsh
D = Tired Bog	LM = Lowland Mix Forest	R = Red Pine	W = White Pine
E = Swamp Hardwoods	M = Maple, Beech, Birch	S = Black Spruce	X = Non Stocked
F = Spruce/Fir	MC = Mixed Conifer	T = Tamarack	Y = Sand
G = Grass	MD = Mixed Deciduous	Z = Water	
H = Hemlock	N = Marsh		

Density	
0 = Non Stocked	5 = Pole Timber Medium
1 = Seedling Sapling Poor	6 = Pole Timber Well
2 = Seedling Sapling Medium	7 = Saw Timber Poor
3 = Seedling Sapling Well	8 = Saw Timber Medium
4 = Pole Timber Poor	9 = Saw Timber Well

D.I. Sheep Ranch

292.9 Acres



PU #	Acres
3	21
9	18.7

45.962598, -83.592749

Proposed Access (Approximate)

Flagged line. ATV trail is southern boundary

Legend	
	Against State (Red)
	Payment Unit (Yellow)
	Recreational Trail
	Temporary Management Access
	MIRIS Section Corner
	Intermittent Stream
	Perennial River
	Lakes and Rivers
	Stand

