



TIMBER SALE MAP

This information provided by authority of Part 525, 1994 PA 451, as amended.

Sale Number 45-004-23	Date 06/26/2023
---------------------------------	---------------------------

Forest Management Unit Sault Ste Marie Mgt Unit	County Chippewa	Mapped By: Fanelli Cruised By: Fanelli/Brinks
--	--------------------	--

Scale 1:15,840	Page 1	Of 1
-------------------	-----------	---------

Township 45N	Range 01W	Section(s) and Subdivision(s) Sec. 32 E1/2SE; Sec. 33 NW,SENE,SW,N1/2SE;
-----------------	--------------	---

Cover Type			
A = Aspen	J = Jack Pine	O = Oak	U = Upland Brush
B = Paper Birch	K = Rock	P = Lowland Poplar	UM = Upland Mix Forest
C = Cedar	L = Lowland Brush	Q = Mixed Swamp Conifer	V = Bog or Marsh
D = Treed Bog	LM = Lowland Mix Forest	R = Red Pine	W = White Pine
E = Swamp Hardwoods	M = Maple, Beech, Birch	S = Black Spruce	X = Non Stocked
F = Spruce/Fir	MC = Mixed Conifer	T = Tamarack	Y = Sand
G = Grass	MD = Mixed Deciduous	Z = Water	
H = Hemlock	N = Marsh		

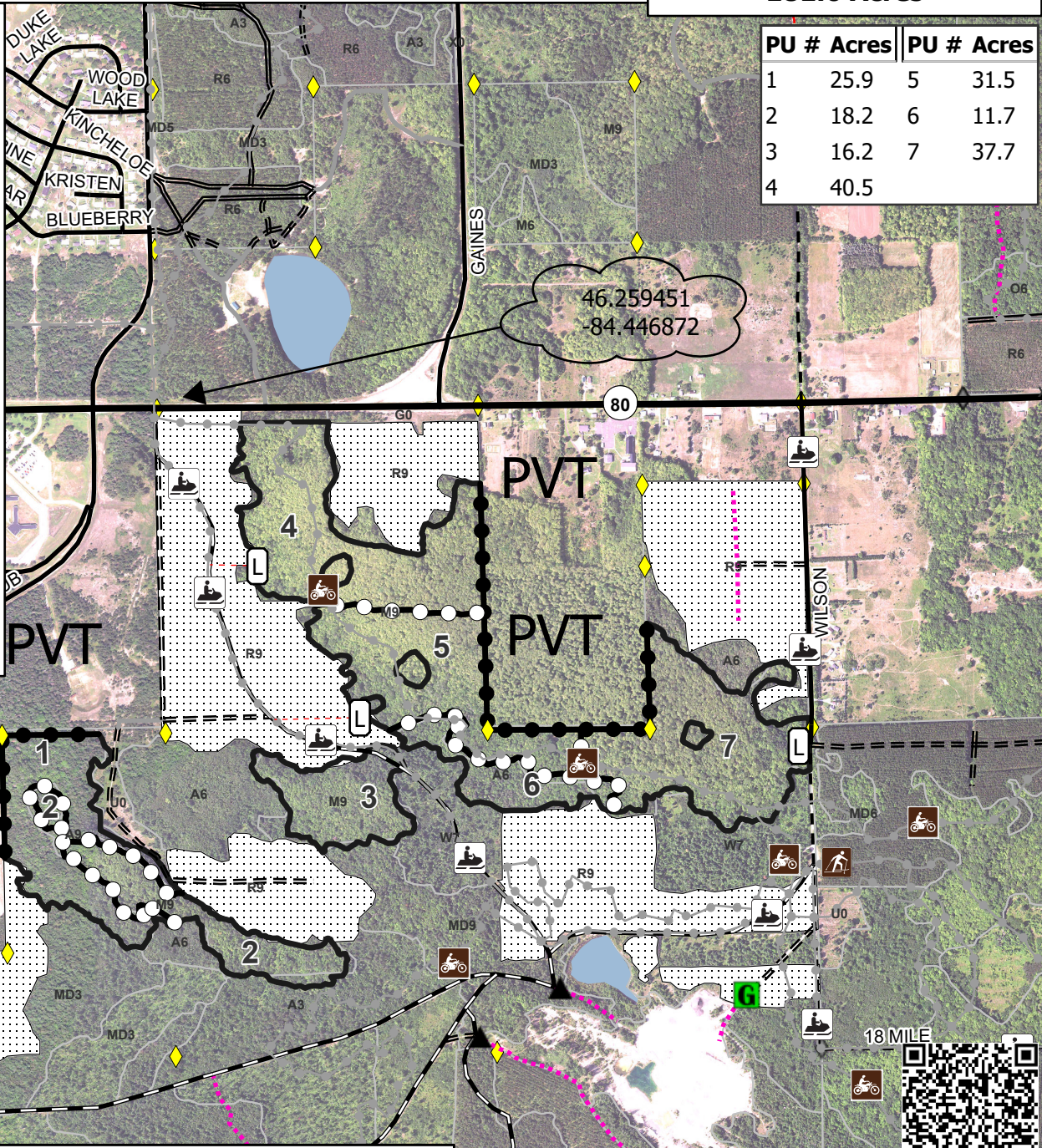
Density	
0 = Non Stocked	5 = Pole Timber Medium
1 = Seedling Sapling Poor	6 = Pole Timber Well
2 = Seedling Sapling Medium	7 = Saw Timber Poor
3 = Seedling Sapling Well	8 = Saw Timber Medium
4 = Pole Timber Poor	9 = Saw Timber Well

Hard Time Hardwood
181.6 Acres

PU #	Acres	PU #	Acres
1	25.9	5	31.5
2	18.2	6	11.7
3	16.2	7	37.7
4	40.5		

Legend

- Recreational Trail
- Primary Forest Road
- Secondary Forest Road
- Forest Access Route
- Paved Road
- Gravel Road
- County Road - Seasonal
- Private Road
- Temporary Management Access
- Highway
- Survey Grade Corner
- Field Grade Corner
- Berm
- Gate
- Lakes and Rivers
- Stand
- Proposed Landings
- Fire Break
- Sale Boundary (Red)
- Payment Unit (Green)
- Private Line (Blue)
- Nearby Timber Sale



Scale

0 0.25 0.5 1 Miles

