



### TIMBER SALE MAP

This information provided by authority of Part 525, 1994 PA 451, as amended.

Sale Number <b>45-005-24</b>	Date <b>04/29/2024</b>	
Scale <b>1:15,840</b>	Page <b>1</b>	Of <b>6</b>

Forest Management Unit <b>Sault Ste Marie Mgt Unit</b>	County <b>Chippewa</b>	Mapped By: Contractor/Sault Unit
		Cruised By: Contractor/Sault Unit

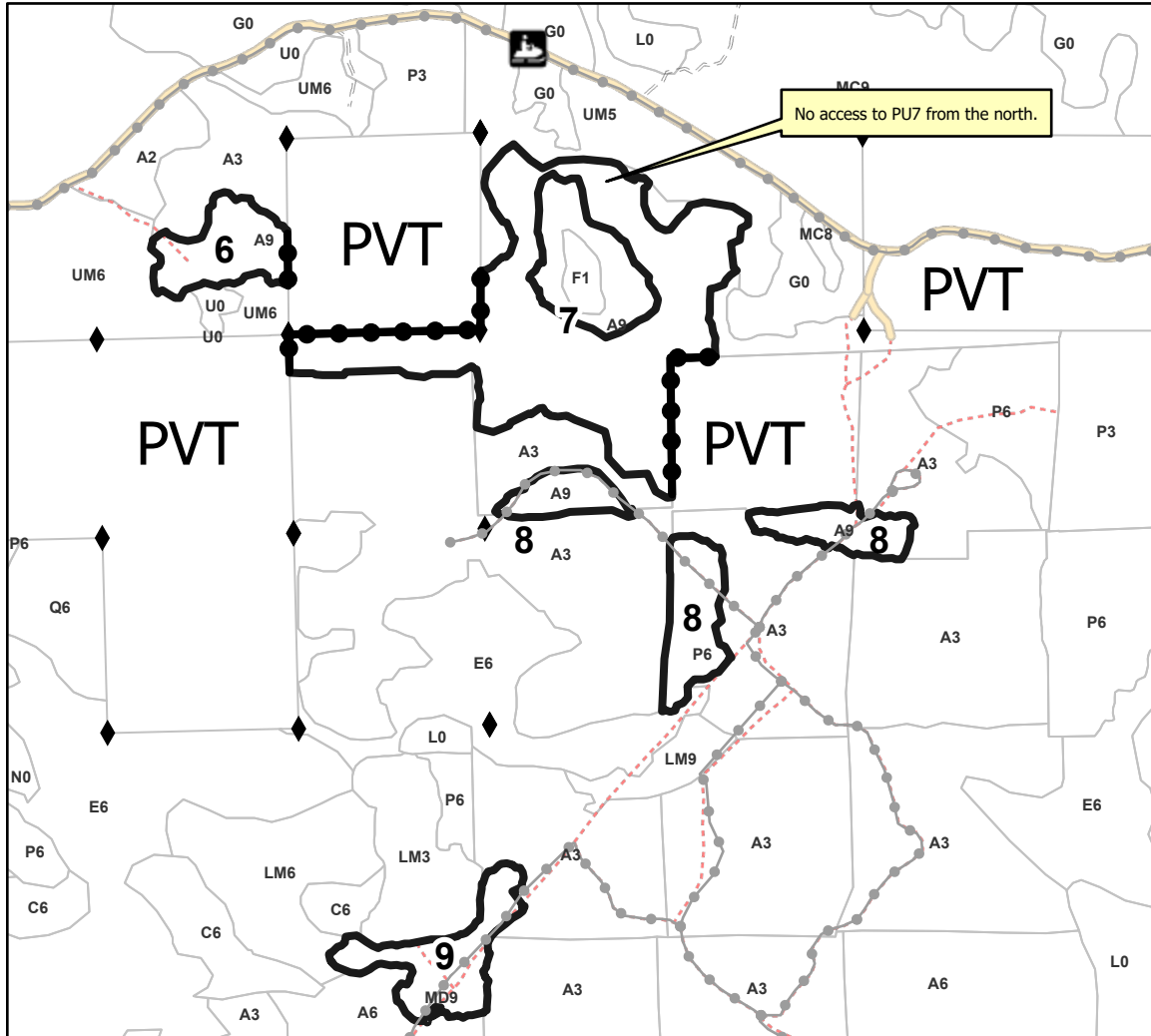
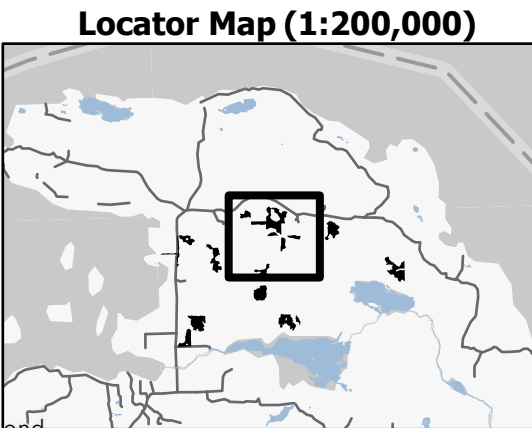
Township | Range | Section(s) and Subdivision(s) | Sec. 6 W1/2NW,E1/2SE; SWNW,NENE,SW,SESE; Sec. 3 SENW,NWNE,S1/2NE,NWSE; Sec. 31 SWSW; Sec. 35 SWSE; Sec. 36 S1/2SW; Sec. 5 W1/2SW; Sec. 1 NW,NWNE,S1/2NE,W1/2SW; Sec. 10 SENE,SE; Sec. 11 E1/2NE; Sec. 12 NWNW,N1/2SW,SESW,NWSE; Sec. 2

Cover Type			
A = Aspen	J = Jack Pine	O = Oak	U = Upland Brush
B = Paper Birch	K = Rock	P = Lowland Poplar	UM = Upland Mix Forest
C = Cedar	L = Lowland Brush	Q = Mixed Swamp Conifer	V = Bog or Marsh
D = Treed Bog	LM = Lowland Mix Forest	R = Red Pine	W = White Pine
E = Swamp Hardwoods	M = Maple, Beech, Birch	S = Black Spruce	X = Non Stocked
F = Spruce/Fir	MC = Mixed Conifer	T = Tamarack	Y = Sand
G = Grass	MD = Mixed Deciduous	Z = Water	
H = Hemlock	N = Marsh		

Density	
0 = Non Stocked	5 = Pole Timber Medium
1 = Seedling Sapling Poor	6 = Pole Timber Well
2 = Seedling Sapling Medium	7 = Saw Timber Poor
3 = Seedling Sapling Well	8 = Saw Timber Medium
4 = Pole Timber Poor	9 = Saw Timber Well

PU #	Acres	PU #	Acres	PU #	Acres
1	9.7	6	9.6	11	26.1
2	14.1	7	58.4	12	31.9
3	33.9	8	19.7	13	39
4	20.3	9	11.6		
5	28	10	27.3		

**DI Drumming on Drummond**  
**329.6 Acres**



Legend	
	Against State (Red)
	Stand
	Private Line (Blue)
	Recreational Trail
	Forest Access Route
	Administrative Access Only
	Non-DNR Road
	Survey Grade Corner

Use QR Code to open Map in App

