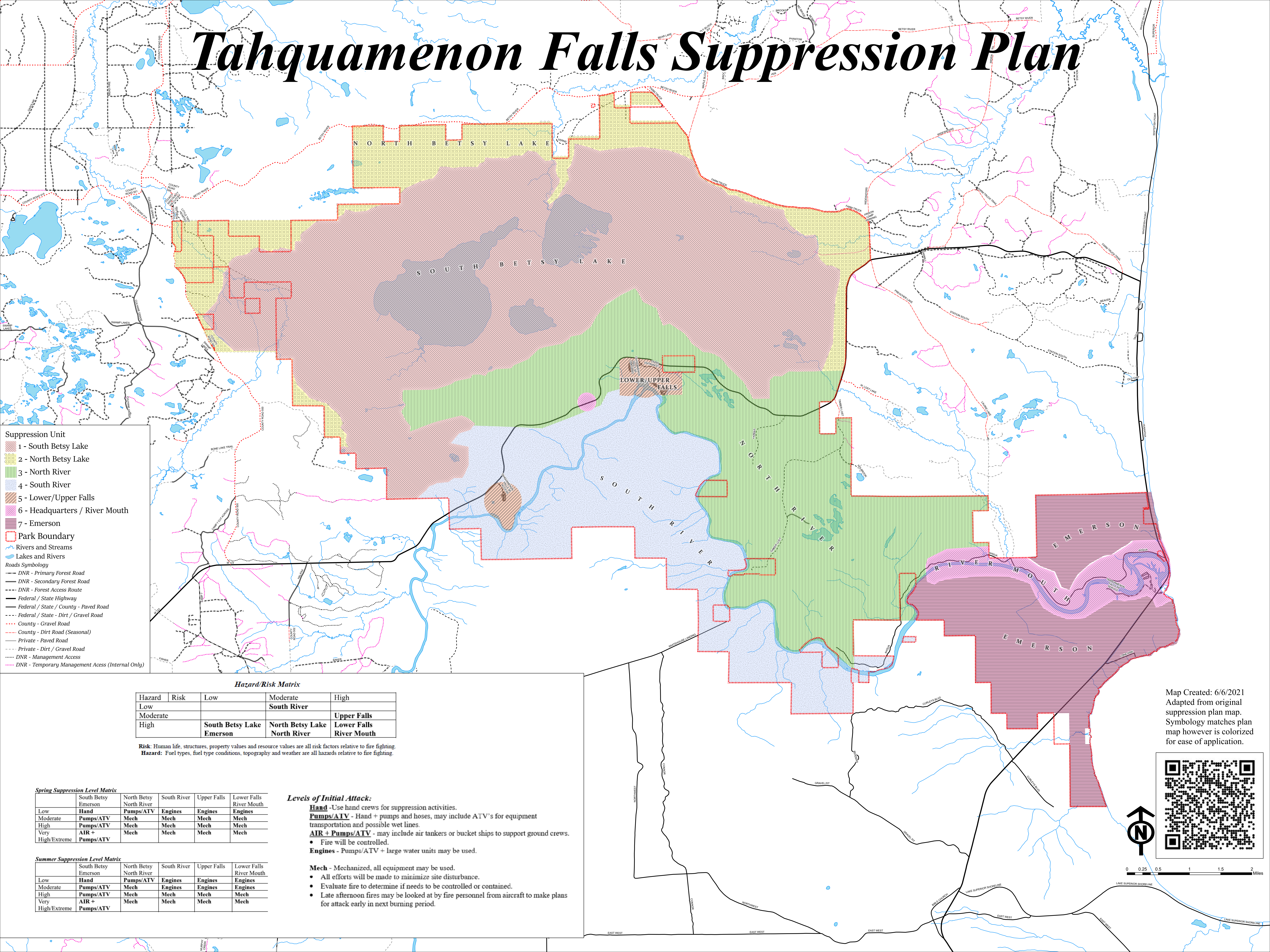


Tahquamenon Falls Suppression Plan



Suppression Unit

- 1 - South Betsy Lake
- 2 - North Betsy Lake
- 3 - North River
- 4 - South River
- 5 - Lower/Upper Falls
- 6 - Headquarters / River Mouth
- 7 - Emerson

Park Boundary

Rivers and Streams

Lakes and Rivers

Roads Symbology

- DNR - Primary Forest Road
- DNR - Secondary Forest Road
- DNR - Forest Access Route
- Federal / State Highway
- Federal / State / County - Paved Road
- Federal / State - Dirt / Gravel Road
- County - Gravel Road
- County - Dirt Road (Seasonal)
- Private - Paved Road
- Private - Dirt / Gravel Road
- DNR - Management Access
- DNR - Temporary Management Access (Internal Only)

Hazard/Risk Matrix

Hazard	Risk	Low	Moderate	High
Low			South River	
Moderate				Upper Falls
High		South Betsy Lake Emerson	North Betsy Lake North River	Lower Falls River Mouth

Risk: Human life, structures, property values and resource values are all risk factors relative to fire fighting.
Hazard: Fuel types, fuel type conditions, topography and weather are all hazards relative to fire fighting.

Spring Suppression Level Matrix

	South Betsy Emerson	North Betsy North River	South River	Upper Falls	Lower Falls River Mouth
Low	Hand	Pumps/ATV	Engines	Engines	Engines
Moderate	Pumps/ATV	Mech	Mech	Mech	Mech
High	Pumps/ATV	Mech	Mech	Mech	Mech
Very High/Extreme	AIR + Pumps/ATV	Mech	Mech	Mech	Mech

Levels of Initial Attack:

Hand - Use hand crews for suppression activities.
Pumps/ATV - Hand + pumps and hoses, may include ATV's for equipment transportation and possible wet lines.
AIR + Pumps/ATV - may include air tankers or bucket ships to support ground crews.

- Fire will be controlled.

Engines - Pumps/ATV + large water units may be used.

Summer Suppression Level Matrix

	South Betsy Emerson	North Betsy North River	South River	Upper Falls	Lower Falls River Mouth
Low	Hand	Pumps/ATV	Engines	Engines	Engines
Moderate	Pumps/ATV	Mech	Engines	Engines	Engines
High	Pumps/ATV	Mech	Mech	Mech	Mech
Very High/Extreme	AIR + Pumps/ATV	Mech	Mech	Mech	Mech

- **Mech** - Mechanized, all equipment may be used.
- All efforts will be made to minimize site disturbance.
- Evaluate fire to determine if needs to be controlled or contained.
- Late afternoon fires may be looked at by fire personnel from aircraft to make plans for attack early in next burning period.

Map Created: 6/6/2021
 Adapted from original suppression plan map. Symbology matches plan map however is colorized for ease of application.

