



TIMBER SALE MAP

This information provided by authority of Part 525, 1994 PA 451, as amended.

Sale Number 45-801-25	Date 01/27/2025	
Scale 1:24,000	Page 1	Of 1

Forest Management Unit Sault Ste Marie Mgt Unit	County Chippewa	Mapped By: Gabler
		Cruised By: DNR

Township 45N	Range 06W	Section(s) and Subdivision(s) NWNW,S1/2NW,S1/2NE,SW,SE; Sec. 8 S1/2NW,S1/2NE,SW,SE; Sec. 9 NW,W1/2NE,SW; Sec. 17 N1/2NW; Sec. 18 NENW,N1/2NE; Sec. 4 SESW,SWSE; Sec. 7
------------------------	---------------------	---

Cover Type

A = Aspen	J = Jack Pine	O = Oak	U = Upland Brush
B = Paper Birch	K = Rock	P = Lowland Poplar	UM = Upland Mix Forest
C = Cedar	L = Lowland Brush	Q = Mixed Swamp Conifer	V = Bog or Marsh
D = Treed Bog	LM = Lowland Mix Forest	R = Red Pine	W = White Pine
E = Swamp Hardwoods	M = Maple, Beech, Birch	S = Black Spruce	X = Non Stocked
F = Spruce/Fir	MC = Mixed Conifer	T = Tamarack	Y = Sand
G = Grass	MD = Mixed Deciduous	Z = Water	
H = Hemlock	N = Marsh		

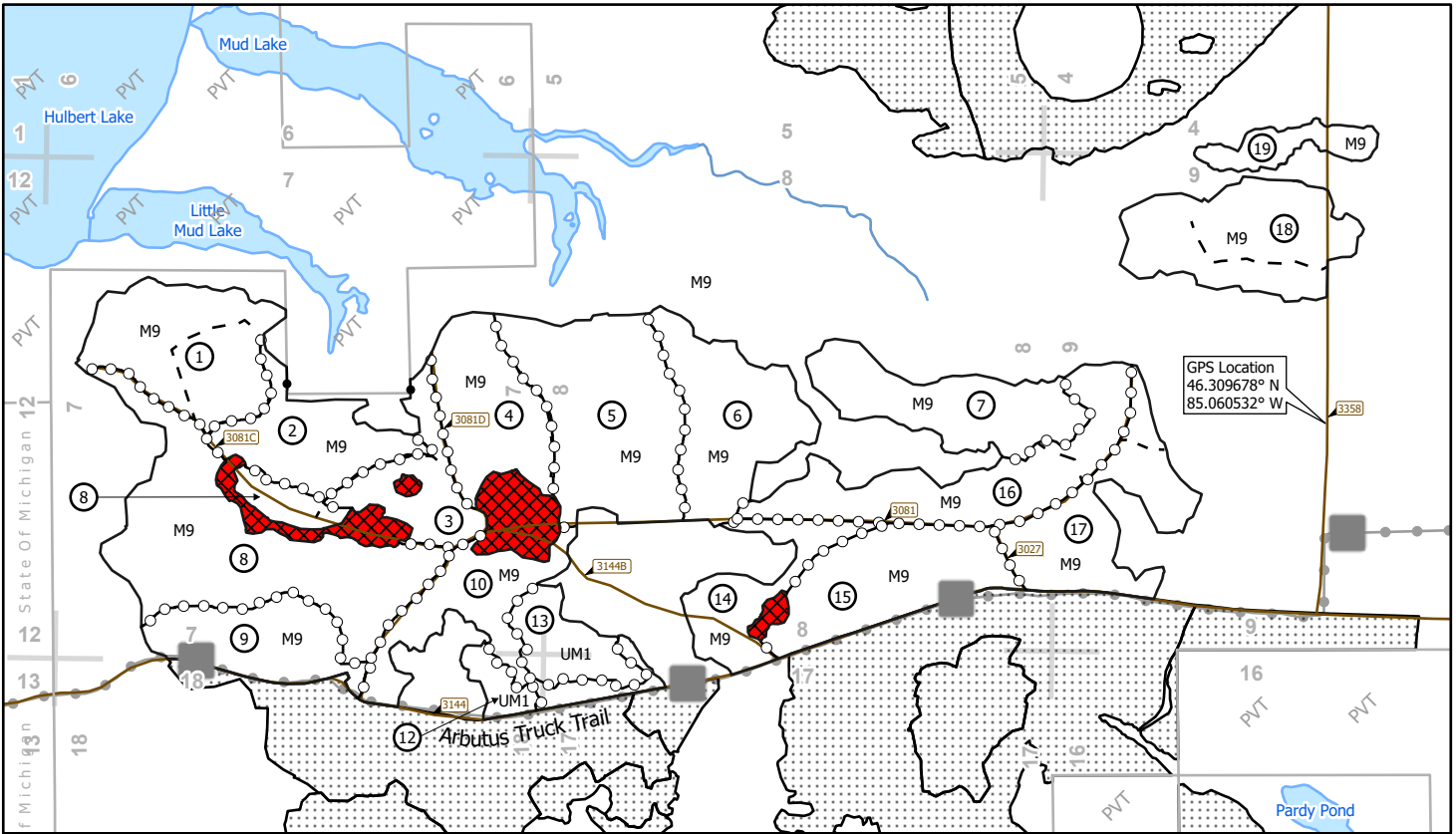
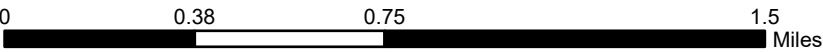
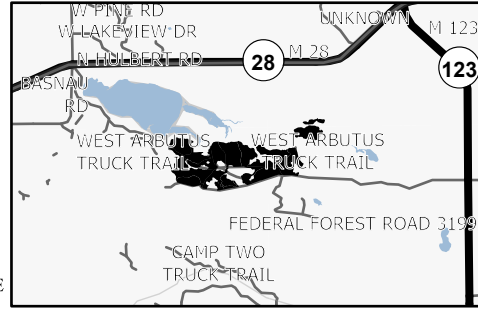
Density

0 = Non Stocked	5 = Pole Timber Medium
1 = Seedling Sapling Poor	6 = Pole Timber Well
2 = Seedling Sapling Medium	7 = Saw Timber Poor
3 = Seedling Sapling Well	8 = Saw Timber Medium
4 = Pole Timber Poor	9 = Saw Timber Well

Payment Unit Number	Acres	Payment Unit Number	Acres	Payment Unit Number	Acres
1	51.3	8	87.9	15	47.3
2	33.6	9	34	16	53.9
3	25.4	10	39.5	17	43.7
4	39.2	11	9.2	18	52.8
5	69.7	12	7.6	19	12.8
6	47.2	13	19.1		
7	42.3	14	25.6		

GNA2 Pink North

742.2 Acres



Legend

- Against USFS (Orange)
- Private Property Boundary
- Private Line (Red)
- USFS Road - Open
- Payment Unit (Orange)
- Forest Access Route
- ▨ Special Protection Areas
- Recreational Trails

Use QR Code to open Map in App

