



TIMBER SALE MAP

This information provided by authority of Part 525, 1994 PA 451, as amended.

Sale Number 41-011-24	Date 08/29/2024
Scale 1:15,840	Page 1 of 3

Forest Management Unit Shingleton Mgt Unit	County Schoolcraft	Mapped By: Steve Tuovila Cruised By: Steve Tuovila
---	-----------------------	---

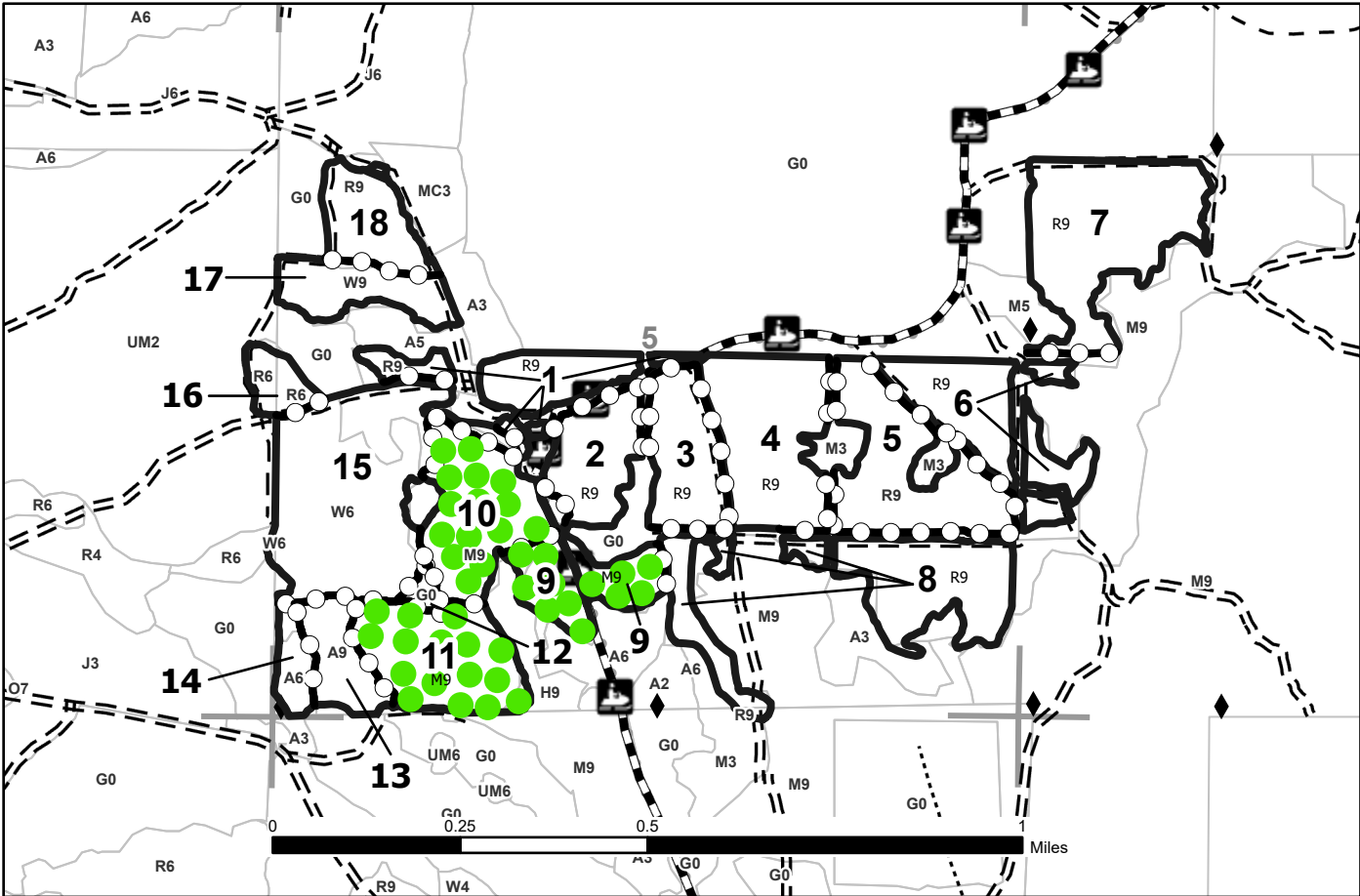
Township 42N	Range 15W / 16W	Section(s) and Subdivision(s) Sec. 1 NWNW; Sec. 4 SWNW,NWSW; Sec. 5 SWNW,SW,SE; Sec. 6 E1/2SE;
-----------------	--------------------	---

Cover Type			
A = Aspen	J = Jack Pine	O = Oak	U = Upland Brush
B = Paper Birch	K = Rock	P = Lowland Poplar	UM = Upland Mix Forest
C = Cedar	L = Lowland Brush	Q = Mixed Swamp Conifer	V = Bog or Marsh
D = Treed Bog	LM = Lowland Mix Forest	R = Red Pine	W = White Pine
E = Swamp Hardwoods	M = Maple, Beech, Birch	S = Black Spruce	X = Non Stocked
F = Spruce/Fir	MC = Mixed Conifer	T = Tamarack	Y = Sand
G = Grass	MD = Mixed Deciduous	Z = Water	
H = Hemlock	N = Marsh		

Density			
0 = Non Stocked	5 = Pole Timber Medium		
1 = Seedling Sapling Poor	6 = Pole Timber Well		
2 = Seedling Sapling Medium	7 = Saw Timber Poor		
3 = Seedling Sapling Well	8 = Saw Timber Medium		
4 = Pole Timber Poor	9 = Saw Timber Well		

Blue Skies Red Pine Mix
268.7 Acres

PU #	Acres	PU #	Acres	PU #	Acres	PU #	Acres
1	11.4	6	16.9	11	17.5	16	4
2	11	7	25.9	12	1.3	17	9.2
3	12.1	8	24.5	13	7.5	18	9.5
4	20.8	9	10.7	14	3.8	19	8.6
5	19.9	10	17.6	15	35.7	20	0.9



Use QR Code to open Map in App

Legend

- Against State (Red)
- Stand
- Payment Unit (Yellow)
- Recreational Trail
- Primary Forest Road
- Forest Access Route
- Administrative Access Only
- Paved Road
- Government Gravel/Dirt
- Private Gravel/Dirt
- Survey Grade Corner
- Gap Cut Locations
- MIRIS Section Corner