



TIMBER SALE MAP

This information provided by authority of Part 525, 1994 PA 451, as amended.

Sale Number 41-013-23	Date 10/03/2023	
Scale 1:20,000	Page 1	Of 1

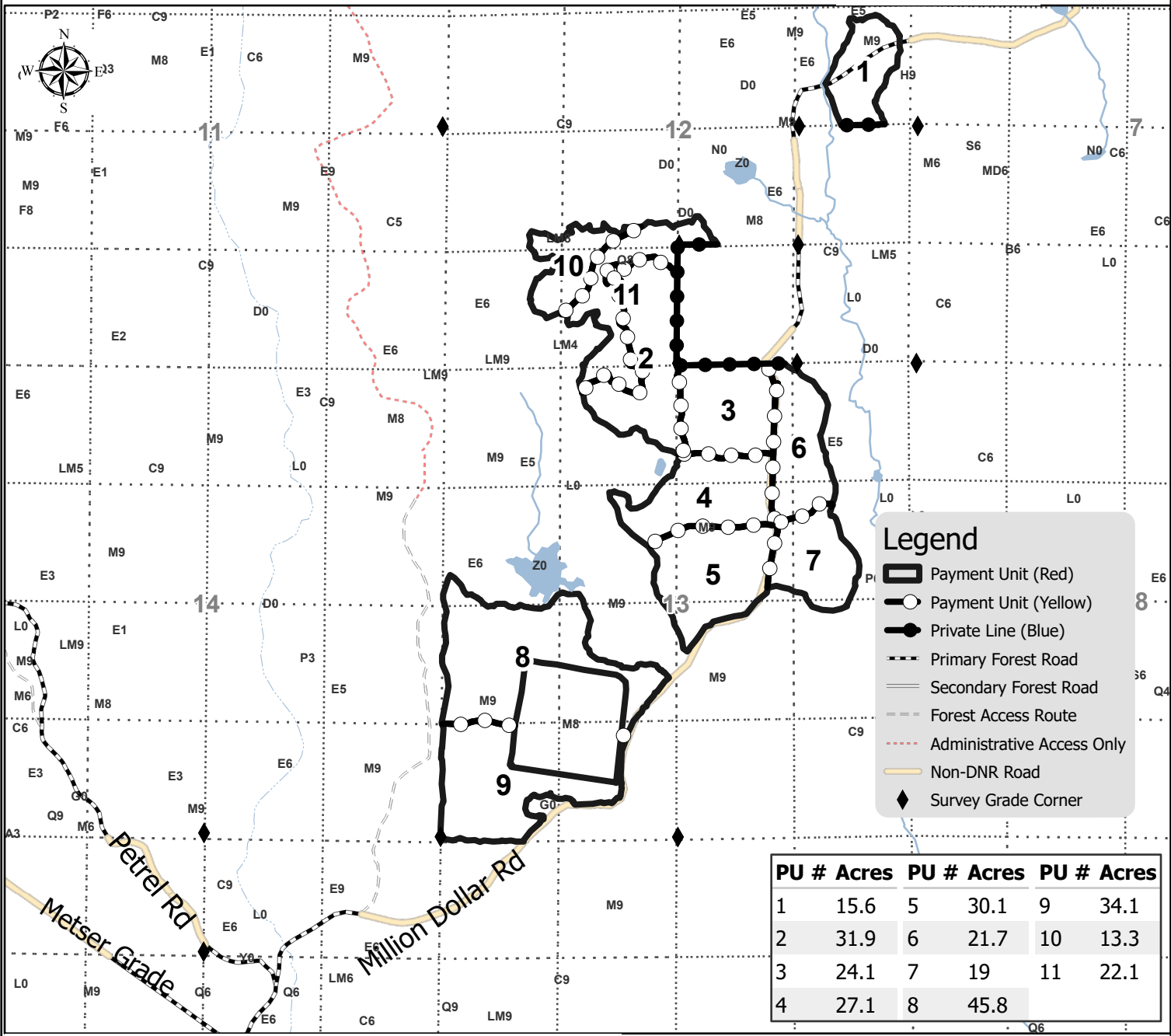
Forest Management Unit Shingleton Mgt Unit	County Alger	Mapped By: Kentner Cruised By: UMLM
---	-----------------	--

Township 46N	Range 17W	Section(s) and Subdivision(s) Sec. 12 SENE,SW,NWSE; Sec. 13 NENW,S1/2NW,NE,SW,N1/2SE;
-----------------	--------------	---

Cover Type			
A = Aspen	J = Jack Pine	O = Oak	U = Upland Brush
B = Paper Birch	K = Rock	P = Lowland Poplar	UM = Upland Mix Forest
C = Cedar	L = Lowland Brush	Q = Mixed Swamp Conifer	V = Bog or Marsh
D = Treed Bog	LM = Lowland Mix Forest	R = Red Pine	W = White Pine
E = Swamp Hardwoods	M = Maple, Beech, Birch	S = Black Spruce	X = Non Stocked
F = Spruce/Fir	MC = Mixed Conifer	T = Tamarack	Y = Sand
G = Grass	MD = Mixed Deciduous	Z = Water	
H = Hemlock	N = Marsh		

Density	
0 = Non Stocked	5 = Pole Timber Medium
1 = Seedling Sapling Poor	6 = Pole Timber Well
2 = Seedling Sapling Medium	7 = Saw Timber Poor
3 = Seedling Sapling Well	8 = Saw Timber Medium
4 = Pole Timber Poor	9 = Saw Timber Well

Million Dollar Hardwood
284.6 Acres



Legend

- Payment Unit (Red)
- Payment Unit (Yellow)
- Private Line (Blue)
- Primary Forest Road
- Secondary Forest Road
- Forest Access Route
- Administrative Access Only
- Non-DNR Road
- Survey Grade Corner

PU #	Acres	PU #	Acres	PU #	Acres
1	15.6	5	30.1	9	34.1
2	31.9	6	21.7	10	13.3
3	24.1	7	19	11	22.1
4	27.1	8	45.8		

