



### TIMBER SALE MAP

This information provided by authority of Part 525, 1994 PA 451, as amended.

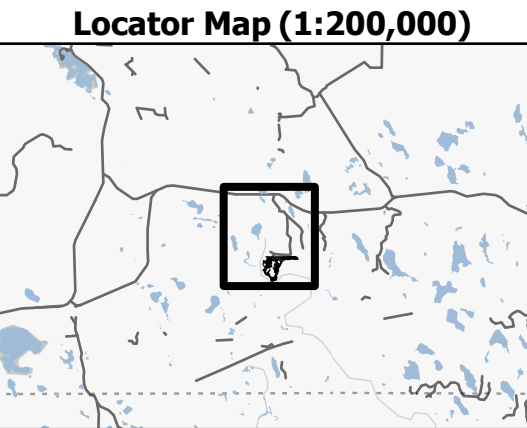
Sale Number <b>41-018-23</b>	Date 10/09/2023	
Scale 1:15,840	Page 1	Of 1

Forest Management Unit Shingleton Mgt Unit	County Alger	Mapped By: Steve Tuovila Cruised By: Adam Petrelius
---	-----------------	--

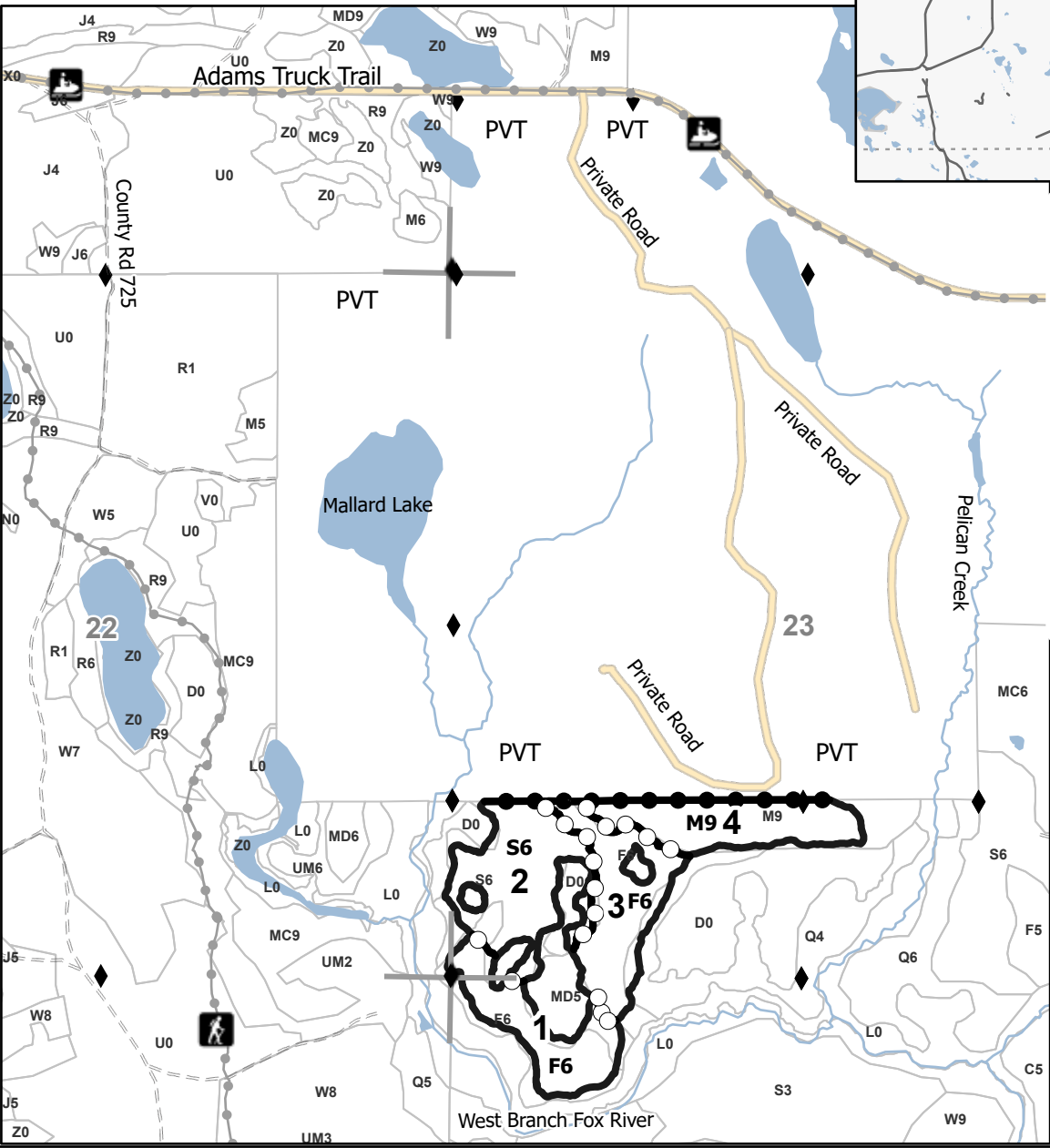
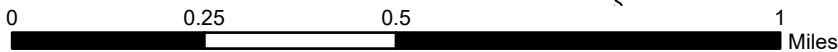
Township 48N	Range 15W	Section(s) and Subdivision(s) Sec. 22 SESE; Sec. 23 S1/2SW,SWSE; Sec. 26 N1/2NW;
-----------------	--------------	--

Cover Type			
A = Aspen	J = Jack Pine	O = Oak	U = Upland Brush
B = Paper Birch	K = Rock	P = Lowland Poplar	UM = Upland Mix Forest
C = Cedar	L = Lowland Brush	Q = Mixed Swamp Conifer	V = Bog or Marsh
D = Treed Bog	LM = Lowland Mix Forest	R = Red Pine	W = White Pine
E = Swamp Hardwoods	M = Maple, Beech, Birch	S = Black Spruce	X = Non Stocked
F = Spruce/Fir	MC = Mixed Conifer	T = Tamarack	Y = Sand
G = Grass	MD = Mixed Deciduous	Z = Water	
H = Hemlock	N = Marsh		

Density	
0 = Non Stocked	5 = Pole Timber Medium
1 = Seedling Sapling Poor	6 = Pole Timber Well
2 = Seedling Sapling Medium	7 = Saw Timber Poor
3 = Seedling Sapling Well	8 = Saw Timber Medium
4 = Pole Timber Poor	9 = Saw Timber Well



## Pick Six 62.9 Acres



### Legend

- Against State (Red)
- Stand
- Payment Unit (Yellow)
- Private Line (Blue)
- Recreational Trail
- Primary Forest Road
- Secondary Forest Road
- Forest Access Route
- Administrative Access Only
- Non-DNR Road
- Survey Corner
- MIRIS Section Corner

PU #	Acres
1	12.7
2	19.4
3	16.2
4	14.6

Use QR Code to open Map in App

