

PLAT OF

MADSEN'S PINES

PART OF THE S¹/₂ OF NW¹/₄ OF NE¹/₄, PART OF THE SE¹/₄ OF NE¹/₄ OF NW¹/₄,
AND PART OF THE NE¹/₄ OF SE¹/₄ OF NW¹/₄, SECTION 14, T.26 N., R.2 W.
GRAYLING TOWNSHIP, CRAWFORD COUNTY, MICHIGAN.



ALL DIMENSIONS ARE IN FEET AND DECIMALS THEREOF

DEDICATION

KNOW ALL MEN BY THESE PRESENTS: That we, Clare A. Madsen and Elma M. Madsen, his wife, as proprietors, have caused the land embraced in the annexed plat to be surveyed, laid out and platted, to be known as MADSEN'S PINES, of part of the S¹/₂ of NW¹/₄ of NE¹/₄, part of the SE¹/₄ of NE¹/₄ of NW¹/₄ and part of the NE¹/₄ of SE¹/₄ of NW¹/₄, Section 14, T26N, R2W, Grayling Township, Crawford County, Michigan, and that the road as shown on said plat is hereby dedicated to the use of the public.

Signed and sealed in the presence of

Charles Wark
CLARE A. MADSEN, JR.
CHARLES WARK

Clare A. Madsen L.S.
Clare A. Madsen
Elma M. Madsen L.S.
Elma M. Madsen

CERTIFICATE OF APPROVAL BY THE BOARD OF COUNTY ROAD COMMISSIONERS

This plat has been examined and was approved on the 3 day of March 1961, by the Crawford County Board of Road Commissioners.

Harold T. Johnson Chairman
M. M. Richmond Member
Elmer F. Goss Member
Elmer A. Goss Member

CERTIFICATE OF APPROVAL BY THE COUNTY PLAT BOARD

This plat was approved on the 27 day of March 1961, by the Crawford County Plat Board.

Lawrence Hunter Reg. of Deeds
Leo E. Lovely County Clerk
Claribell Goss Co. Treasurer

STATE OF MICHIGAN } ss:
County of Crawford }

On this 20th day of March 1961, before me, a Notary Public in and for said county, personally appeared the above named Clare A. Madsen and Elma M. Madsen, his wife, known to me to be the same persons who executed the foregoing dedication and acknowledged the same to be their free act and deed.

Lawrence Hunter
LAWRENCE HUNTER

Notary Public, Crawford County, Michigan
My commission expires: June 4, 1969

COUNTY TREASURER'S CERTIFICATE

(Sec. 135, Act 206, 1893, as amended-Sec. 211.135, C.L. 1948)

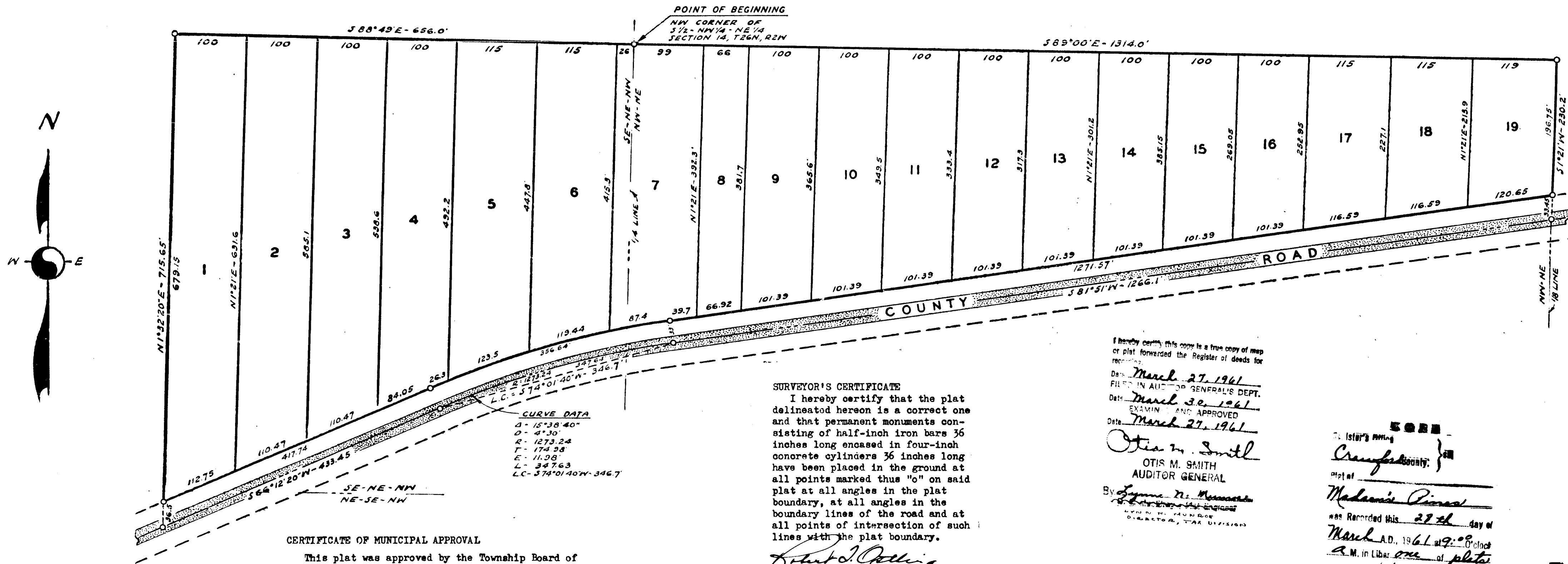
OFFICE OF COUNTY TREASURER
I hereby certify that there are no tax liens or titles held by the State on the lands described hereon, and that there are no tax liens or titles held by individuals on said lands, for the five years preceding the 28th day of February 1961, and that the taxes for said period of five years are paid, as shown by the records of this office. This certificate does not apply to taxes, if any, now in the process of collection by township, city or village collecting officers.

Claribell Goss
Claribell Goss, Co. Treasurer.

DESCRIPTION OF LAND PLATTED

The land embraced in the annexed plat of MADSEN'S PINES of part of the S¹/₂ of NW¹/₄ of NE¹/₄, Part of the SE¹/₄ of NE¹/₄ of NW¹/₄ and part of the NE¹/₄ of SE¹/₄ of NW¹/₄, Section 14, T26N, R2W, Grayling Township, Crawford County, Michigan, is described as follows:

Beginning at the northwest corner of the S¹/₂ of NW¹/₄ of NE¹/₄ of Section 14, T26N, R2W, thence S89°00'E 1314.0 feet; thence S1°21'W 230.2 feet; thence S81°51'W 1266.1 feet; thence along the arc of a 4°30' curve to the left, the long chord of which bears S74°01'40"W 346.7 feet; thence S66°12'20"W 433.45 feet; thence N1°32'20"E 715.65 feet; thence S88°49'E 656.0 feet to the place of beginning. Said plat contains 19 lots numbered from 1 to 19 inclusive.



CERTIFICATE OF MUNICIPAL APPROVAL

This plat was approved by the Township Board of the Township of Grayling, Crawford County, Michigan, at a meeting held on the 19 day of March 1961, and that the width of lots is in compliance with requirements of Sec. 30, Act 172 of 1929.

R. M. Hayes
R. M. HAYES, Clerk.

SURVEYOR'S CERTIFICATE

I hereby certify that the plat delineated hereon is a correct one and that permanent monuments consisting of half-inch iron bars 36 inches long encased in four-inch concrete cylinders 36 inches long have been placed in the ground at all points marked thus "o" on said plat at all angles in the plat boundary, at all angles in the boundary lines of the road and at all points of intersection of such lines with the plat boundary.

Robert T. Ostling
Robert T. Ostling
Registered Land Surveyor
Mich. No. 5133

I hereby certify this copy is a true copy of map or plat forwarded the Register of deeds for recording.

Date: March 27, 1961
FILED IN AUDITOR GENERAL'S DEPT.
Date: March 30, 1961
EXAMINED AND APPROVED
Date: March 27, 1961

Otis M. Smith
OTIS M. SMITH
AUDITOR GENERAL

Lyman D. M... ..
LYMAN D. M... ..
DIRECTOR, TAX DIVISION

5000

Crawford County

Recorded this 27th day of March A.D. 1961 at 9:00 o'clock A.M. in Liber 66 of plats

Page 46
Lawrence Hunter
Register of Deeds