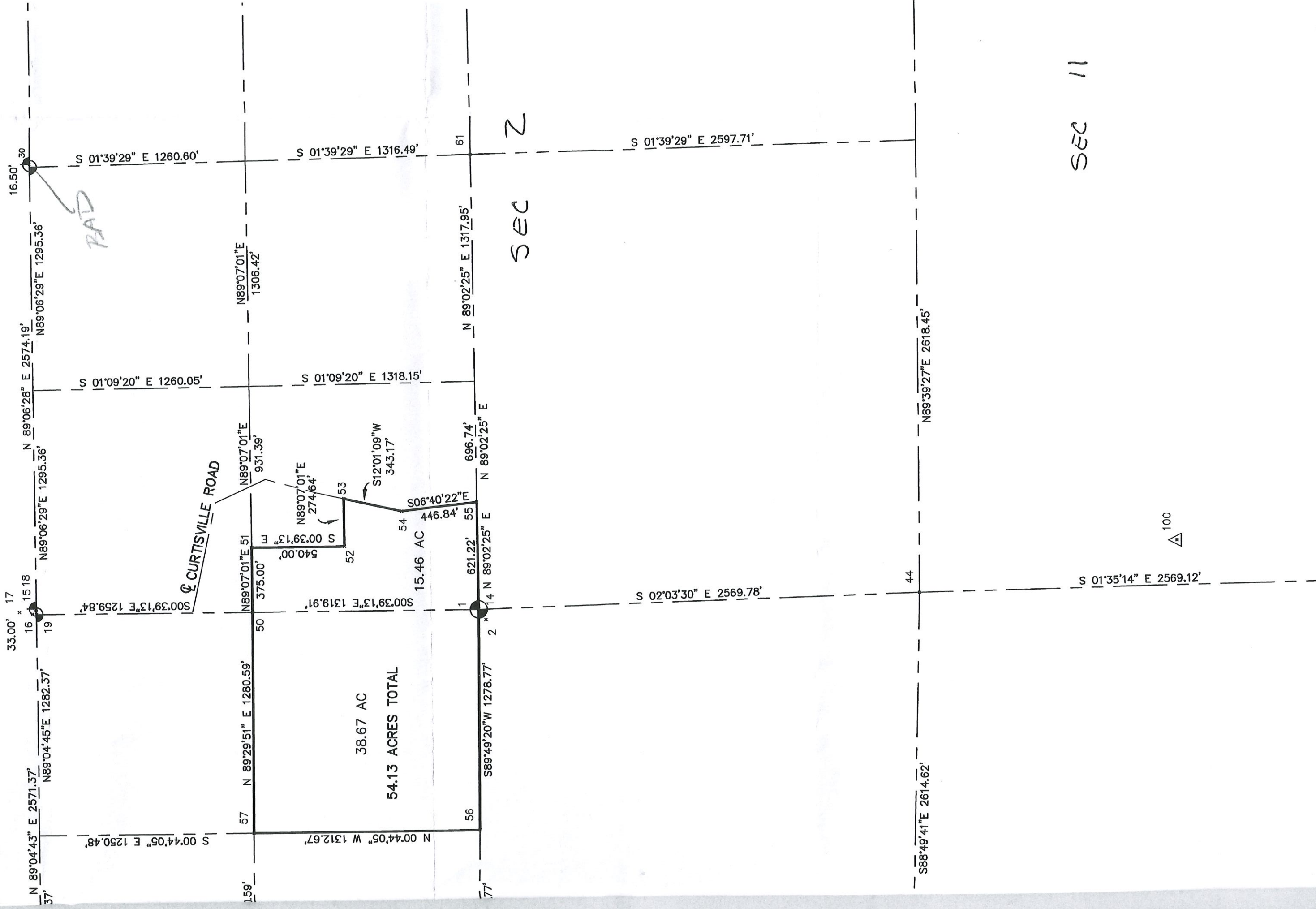
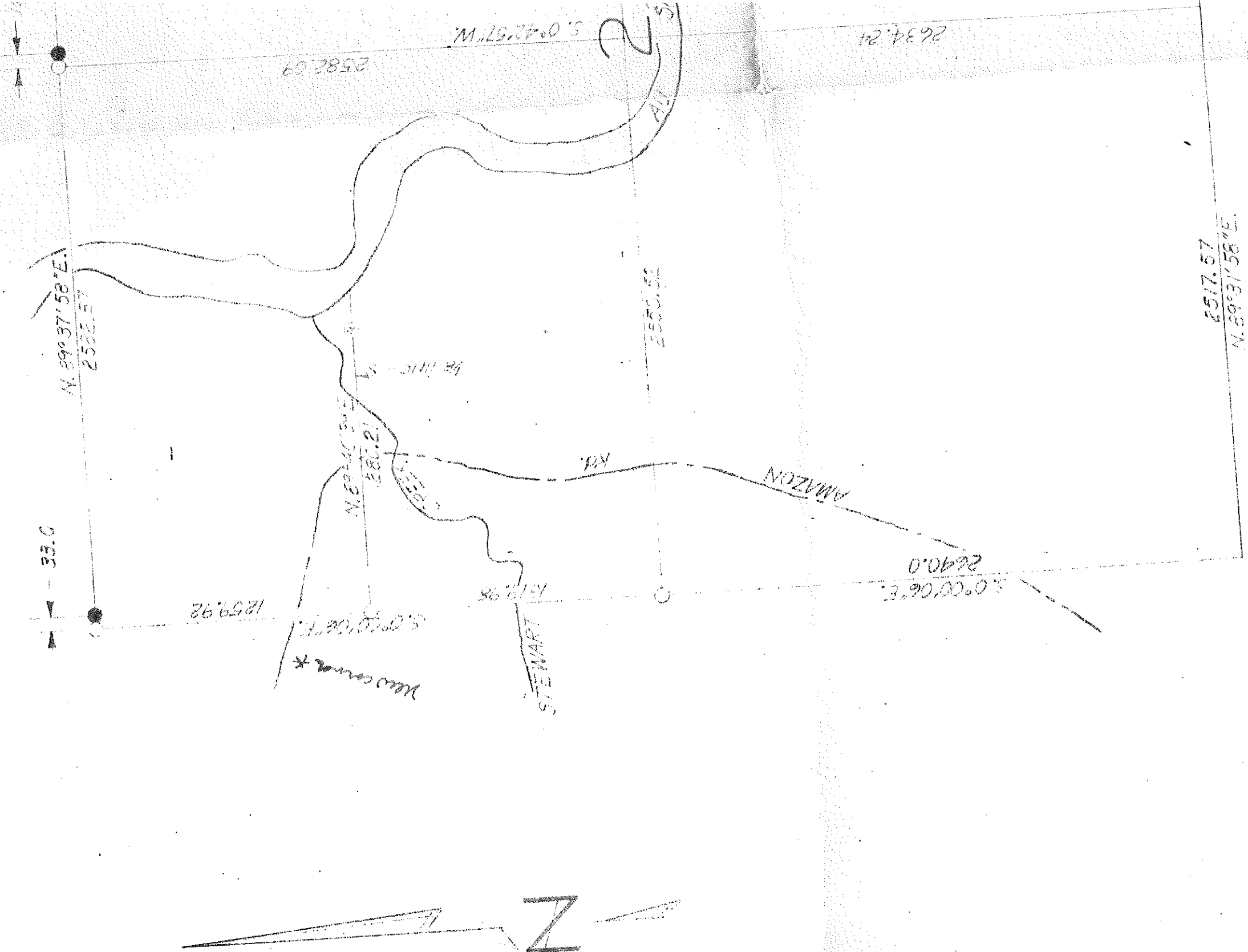


22



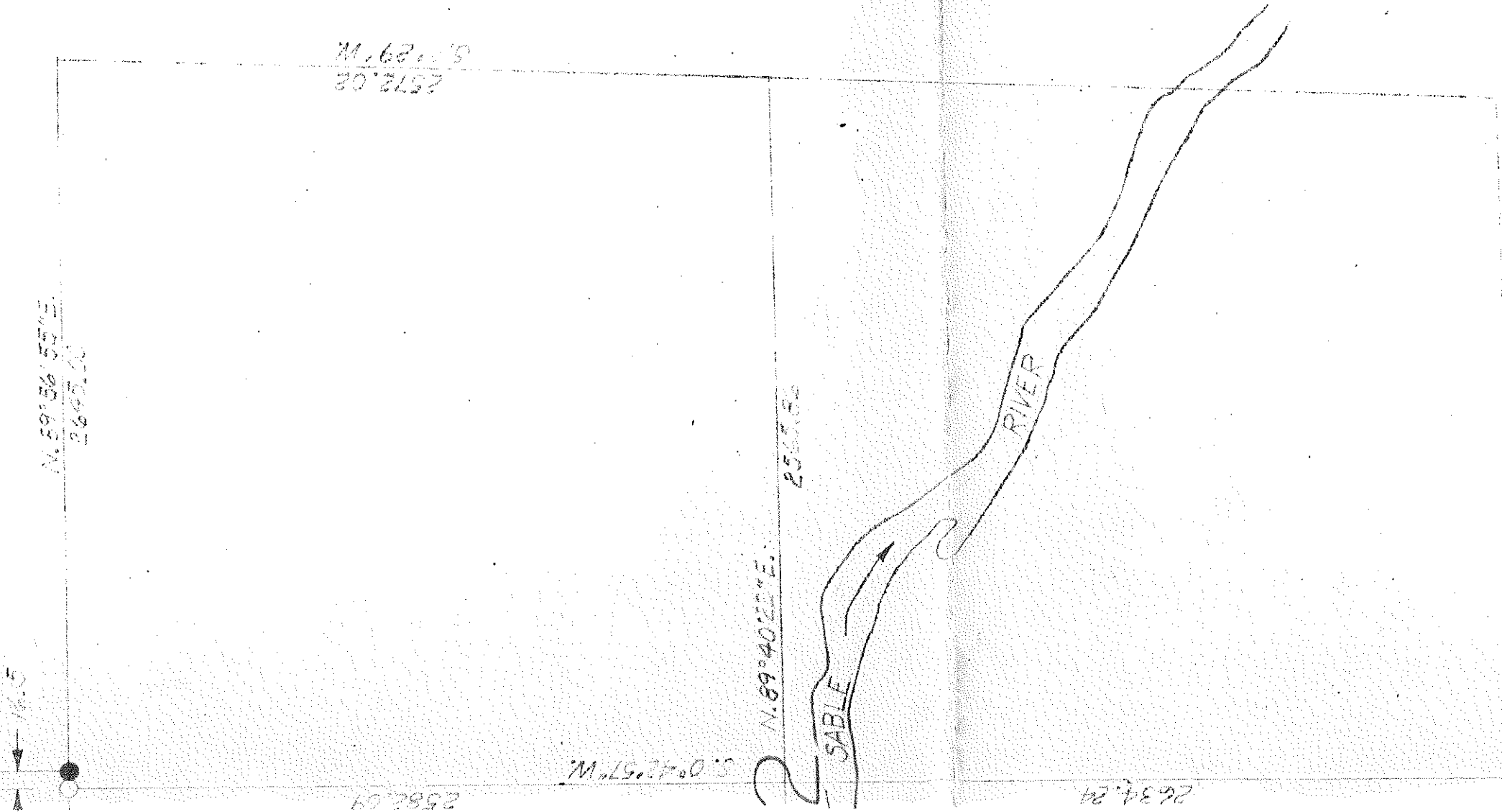
MG. NO. _____



Surveyed by

| | | | |
|-----------------|------|---------------------------|-------------|
| DATE | | DR. R. L. FUR 5-23-79 | |
| SECTION HEAD | | OK. W. FELDPAUSCH 5-24-79 | |
| DIVISION HEAD | | APP. | |
| DEPARTMENT HEAD | | APP. | |
| REV. | DATE | BY | DESCRIPTION |
| | | | |

CON



LEGEND

- Corner Found
- Corner Set
- 1/2" Rebar Set with CP60 Cap

WITNESSES

- N. 1/4 Cor.
 Set 1/2" rebar & cap with 500 wits.
 1 dist. from Steward Creeks
 12" Oak (W. side) N. 63° W. 76.78
 16" R. pine (S. side) N. 75° W. 31.98
 8" Black oak (N. side) N. 50° E. 50.06
 4" Birch oak (E. side) S. 52° E. 35.35
- N.W. Cor.
 Set 1/2" rebar & cap with 200 wits (33)
 W. of the S.W. cor. of sec. 35 T25N R5E
 R 5 E.
 4" Black oak (S.E. side) S. 67° W. 10.28
 14" Red pine (S.E. side) N. 73° W. 23.24
 6" Black oak (S. side) S. 60° E. 42.47
 14" Oak (S. side) S. 25° E. 39.49
- N. 1/4 Cor.
 Set 1/2" rebar the gov't cap (L49)
 W. of the S. 1/4 cor. of sec. 35 T25N R5E.
 10" Cedar (E. side) S. 75° E. 22.55
 8" Black oak (W. side) N. 52° E. 42.42
 2" Twin cedar (E. side) N. 20° W. 6.09
 14" Aspen (W. side) N. 25° E. 52.10
- * N. 1/8 Cor. on N. sec. line
 Set 1/2" rebar & cap on line between
 W. 1/4 cor. & N.W. cor. of prorated dist.
 Forest service post S. 17° E. 54.05
 22" Oak N. 52° W. 53.55
 20" Red pine N. 42° E. 73.75
 12" Jack pine N. 15° E. 31.78

by G. Fausser Feb. 979 E.B. 1367

NSUMERS POWER CO.
 ELECTRIC ENGINEERING DEPARTMENT
 JACKSON, MICHIGAN

POSSIBLE TIMBER TRESPASS
 PLAINFIELD TWP. ICSCC CO.
 T. 24 N. R. 5 E. SEC. 2

| | | | |
|-----------------|----------------------|---------|------|
| SCALE 1" = 500' | DRAWING NO. S-E 8170 | SHEET 1 | REV. |
| JOB | | | |