

BORROW REQUIREMENTS			
WHERE OBTAINED (LINK TO STA.)	AMOUNT REQUIRED	AMOUNT AVAILABLE	PIT LOCATION
735+00 - 792+00	13,200		Subbase Side Borrow as directed by the Engineer
Borrow Excavation (Pit Run Gravel)			Surf. Cont. SW 1/4 of SW 1/4 of Sec. 35 T 23 N - R 11 W Pit #1

MICHIGAN
STATE HIGHWAY DEPARTMENT
CHARLES M. ZIEGLER
STATE HIGHWAY COMMISSIONER

THE IMPROVEMENTS COVERED BY THESE PLANS SHALL BE DONE IN ACCORDANCE WITH THE MICHIGAN STATE HIGHWAY DEPARTMENT CURRENT STANDARD SPECIFICATIONS AND SUPPLEMENTAL SPECIFICATIONS.

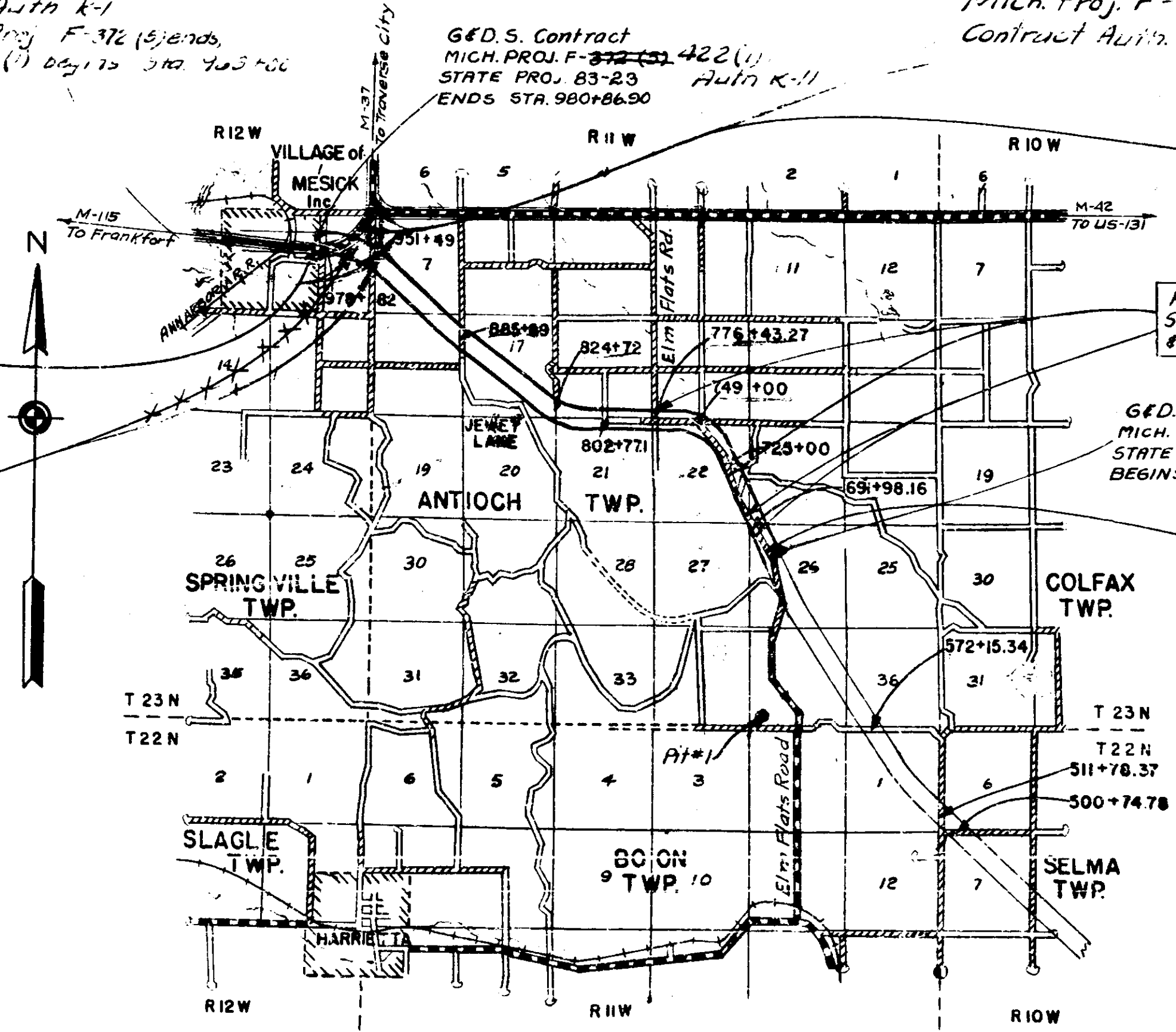
PROJECT NO.	F-372(5)
DATE	9-15-50
PROJECT NO.	F-422(1)
DATE	9-15-50
PROJECT NO.	F-372(6)
DATE	9-15-50
PROJECT NO.	F-422(2)
DATE	9-15-50

PLAN AND PROFILE OF PROPOSED
MICHIGAN PROJECT F - 372 (5) & F-422 (1)
MESICK - CADILLAC ROAD
WEXFORD COUNTY
ANTIOCH & SPRINGVILLE TOWNSHIPS

MICHIGAN PROJECT F - 372 (6) & F-422 (2)
SURFACING CONTRACT

- INDEX OF SHEETS
- 1 - Title
 - 2 - Typical Cross Sections
 - 3 - Special Provisions and Notes
 - 4-15 - Plan and Profile Sheets
 - 16 - Mass Diagram
 - 17-19 - Quantity Sheets
- INDEX OF SHEETS (Surfacing Contract) F-372(6)
- 1 - Title
 - 2 - Typical Cross Sections
 - 3 - Special Provisions and Notes
 - 4-15 - Plan and Profile Sheets
 - 16 - Mass Diagram
 - 17-19 - Quantity Sheets
- INDEX OF SHEETS (Surfacing Contract) F-422(2)
- 1 - Title
 - 2 - Typical Cross Sections
 - 3 - Special Provisions and Notes
 - 4-15 - Plan and Profile Sheets
 - 16 - Mass Diagram
 - 17-19 - Quantity Sheets

- STANDARD PLANS (Surf. Contract) F-372(6) & F-422(2)
- E-4-A-9C
 - E-4-A-10B
 - E-4-A-26C
 - E-4-A-28B
 - E-4-A-36C
 - E-4-A-49B-7
 - E-4-A-75C-2
 - E-4-A-76A
 - E-4-A-110B
 - E-6-A-55D
 - E-13-A-1D
 - E-13-A-42-48A
 - E-12-D-8-6A
 - E-13-A-51-60A



CONTRACT FOR Pit Run Gravel Surf. F-372(6) & F-422(2)
89-23-23 WEXFORD

DIVISION APPROVAL	
CHECKED	9-15-50
CHECKED	9-15-50
RECOMMENDED FOR APPROVAL	9-15-50
RECOMMENDED FOR APPROVAL	9-15-50
APPROVED	9-15-50
BRIDGE DIVISION APPROVAL	
RECOMMENDED FOR APPROVAL	9-15-50
APPROVED	9-15-50
STATE HIGHWAY DEPARTMENT APPROVAL	
APPROVED	9-15-50

DEPARTMENT OF COMMERCE
BUREAU OF PUBLIC ROADS

RECOMMENDED FOR APPROVAL 9-27-50

DISTRICT ENGINEER DATE

APPROVED

DIVISION ENGINEER DATE

CONTRACT NO. GRADING AND DRAINAGE STRUCTURES
89-23-23 WEXFORD

DIVISION APPROVAL	
CHECKED	4-8-49
RECOMMENDED FOR APPROVAL	11-10-49
RECOMMENDED FOR APPROVAL	11-10-49
APPROVED	11-10-49
BRIDGE DIVISION APPROVAL	
RECOMMENDED FOR APPROVAL	11-10-49
APPROVED	11-10-49

F-422(1)
DEPARTMENT OF COMMERCE
BUREAU OF PUBLIC ROADS

RECOMMENDED FOR APPROVAL

DISTRICT ENGINEER DATE

APPROVED

DIVISION ENGINEER DATE

Witnesses to POT
 3/4" Pipe Sta. 671+20.25
 3.81' W 104.42' 20' W Cherry
 32' W B&O' 16' Elm

B.M. *221 El. 1132.77
 Spike in 12' Elm
 92' Lt. Sta. 671+97

Witnesses to POT
 1/2" Pipe Sta. 674+12.79
 5.5' W 42.22' 8' Cherry
 5.64' W 25.97' 16' Maple
 N 71' W 38.35' 16' Elm

B.M. *222 El. 1117.92
 Spike in 16' Elm
 96' Lt. Sta. 678+84

B.M. *223 El. 1106.96
 Spike in 10' Elm
 110' Lt. Sta. 686+48

Witnesses to POT
 1/2" Pipe Sta. 682+67.71
 5.33' W 77.84' 8' Maple
 5.57' W 74.85' 11' Elm
 5.80' W 73.86' 8' Maple

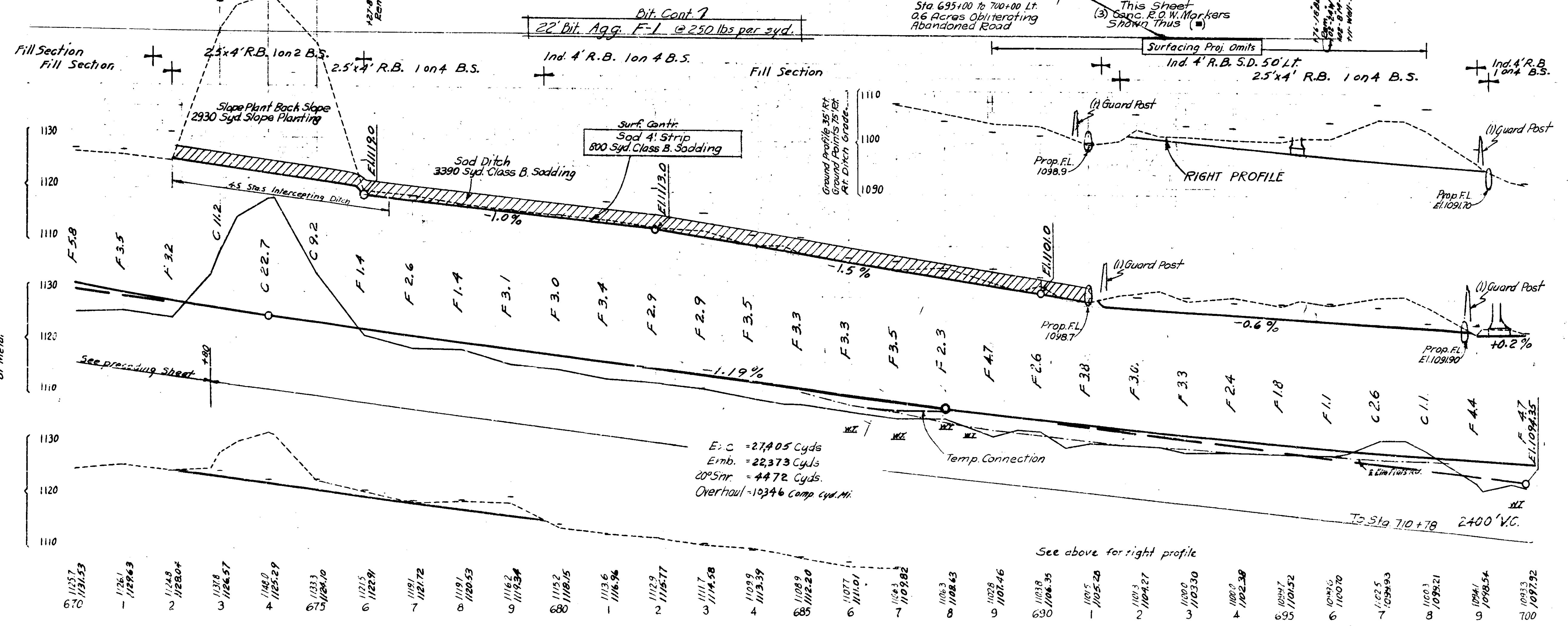
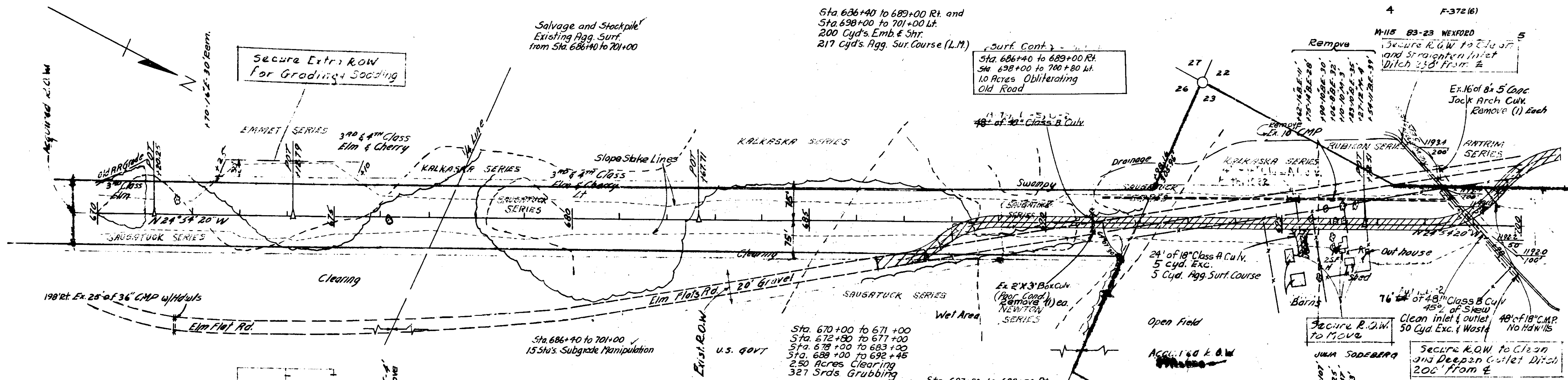
B.M. *224 El. 1093.73
 Spike in 17' Hemlock
 88' Lt. Sta. 695+08

Witnesses to Sec. Cor.
 Common to Sec. 22, 23, 26, 27
 T 23' N R 11' W 3/4" Pipe
 S 33' E 14.85' 14' Hemlock
 S 72' W 16.28' 7' Cherry
 N 77' W 21.40' 5' Cherry

Witnesses to POT
 3/4" Pipe Sta. 696+72.51
 S 11' W 60.37' 10' Cot
 S 41' W 43.24' 12' Cot

F-372(5)
 M-115 83-23 WEXFORD ANTIOCH 5

F-372(16)
 M-115 83-23 WEXFORD 5



E: C = 27,405 Cyds
 Emb. = 22,373 Cyds.
 20% Spr. = 4,472 Cyds.
 Overhaul = 10,346 Comp. Cud. Mi.

See above for right profile

1157 670	1126.1 1129.63	1148 1128.04	1137.8 1126.57	1148.0 1125.29	1133.3 1124.10	1121.5 1122.91	1119.1 1121.72	1119.1 1120.53	1116.2 1119.34	1112 1118.15	1113.6 1116.54	1112.9 1115.77	1111.7 1114.58	1109.9 1113.39	1108.9 1112.20	1107.7 1111.01	1106.3 1108.43	1102.8 1107.46	1103.8 1106.35	1105.2 1105.20	1104.3 1104.27	1100 1103.30	1100.2 1102.38	1099.7 1099.52	1099.6 1100.70	1092.5 1099.93	1100.1 1099.21	1094.1 1098.54	1093.3 1097.92
-------------	-------------------	-----------------	-------------------	-------------------	-------------------	-------------------	-------------------	-------------------	-------------------	-----------------	-------------------	-------------------	-------------------	-------------------	-------------------	-------------------	-------------------	-------------------	-------------------	-------------------	-------------------	-----------------	-------------------	-------------------	-------------------	-------------------	-------------------	-------------------	-------------------