



Witnesses to POT  
3/4" Pipe Sta 611+20.25  
S 61° W 106.02 28' W Cherry  
S 25° W 86.09 16' 2 1/2" Elm

B.M. \*221 El. 113277  
Spike in 12" Elm  
92 Lt. Sta 671+97

Witnesses to POT  
1/2" Pipe Sta. 674+12.79  
S 51° W 42.22 8' Cherry  
S 64° W 23.37 16' Maple  
N 71° W 38.55 16' Elm

B.M. \*222 El. 110696  
Spike in 16" Elm  
96 Lt. Sta 686+48

B.M. \*223 El. 110696  
Spike in 10" Elm  
110 Lt. Sta 686+48

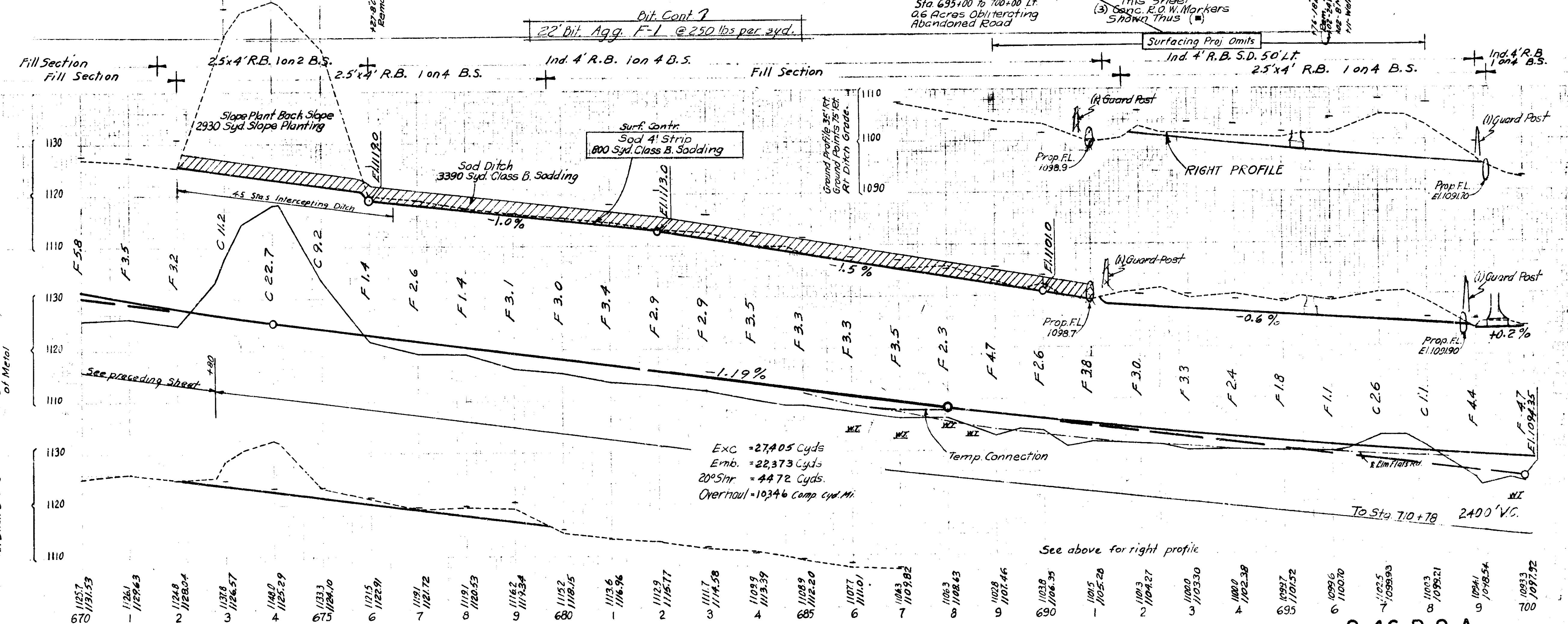
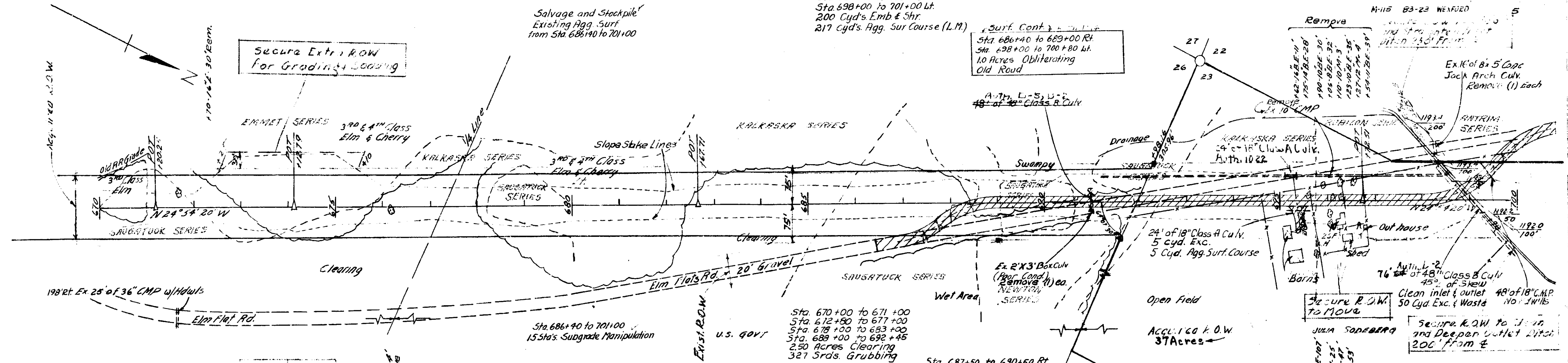
Witnesses to POT  
1/2" Pipe Sta. 682+67.71  
S 33° W 77.51 8' Maple  
S 37° W 74.85 11' Elm  
S 80° W 73.86 8' Maple

B.M. \*224 El. 109973  
Spike in 17" Hemlock  
88 Lt. Sta 695+08

Witnesses to Sec. Cor.  
Canal to Sec. 22 2126.27  
T 23° N R 11 W 3/4" Pipe  
S 33° E 14.85 14' Hemlock  
S 72° W 16.28 7' Cherry  
N 71° W 21.40 5' Cherry

Witnesses to POT  
3/4" Pipe Sta 696+12.51  
S 11° W 60.37 10' Cot  
S 41° W 43.24 12' Cot

M-115 83-23 WEXFORD ANTI-COCH 5  
4 F-372(6)  
M-115 83-23 WEXFORD 5



10-14-49 REV. C.M. BY 11-22-49  
49  
C.M. BY  
DALZELL

DOWNNEY  
MILLERS  
ATAMAN  
WILKINSON

4 Profile  
Top of Metal Grade  
Cut or Fill to Top  
of Metal

Ground Profile 35 Lt.  
Ground Points 75 Lt.  
Rt. Ditch Grade