

BORROW REQUIREMENTS				
WHERE REQUIRED STA. TO STA.	AMT REQUIRED CYBS	AMT AVAILABLE CYBS	SOILS SERIES	PIT LOCATION
REGULAR BORROW				

NO BORROW REQUIRED

ROUTE	Control Section	FEDERAL NO	SHEET NO	TOTAL SHEETS
M-115	83052	F-372(13)	1	1

THE IMPROVEMENTS COVERED BY THESE PLANS SHALL BE DONE IN ACCORDANCE WITH THE MICHIGAN STATE HIGHWAY DEPARTMENT CURRENT STANDARD SPECIFICATIONS AND SUPPLEMENTAL SPECIFICATIONS

LEGEND

1960	1970
A.D.T. 1400	2500
D.H.V. 210	450
%Comm. 14	

MICHIGAN
STATE HIGHWAY DEPARTMENT
JOHN C. MACKIE
 STATE HIGHWAY COMMISSIONER

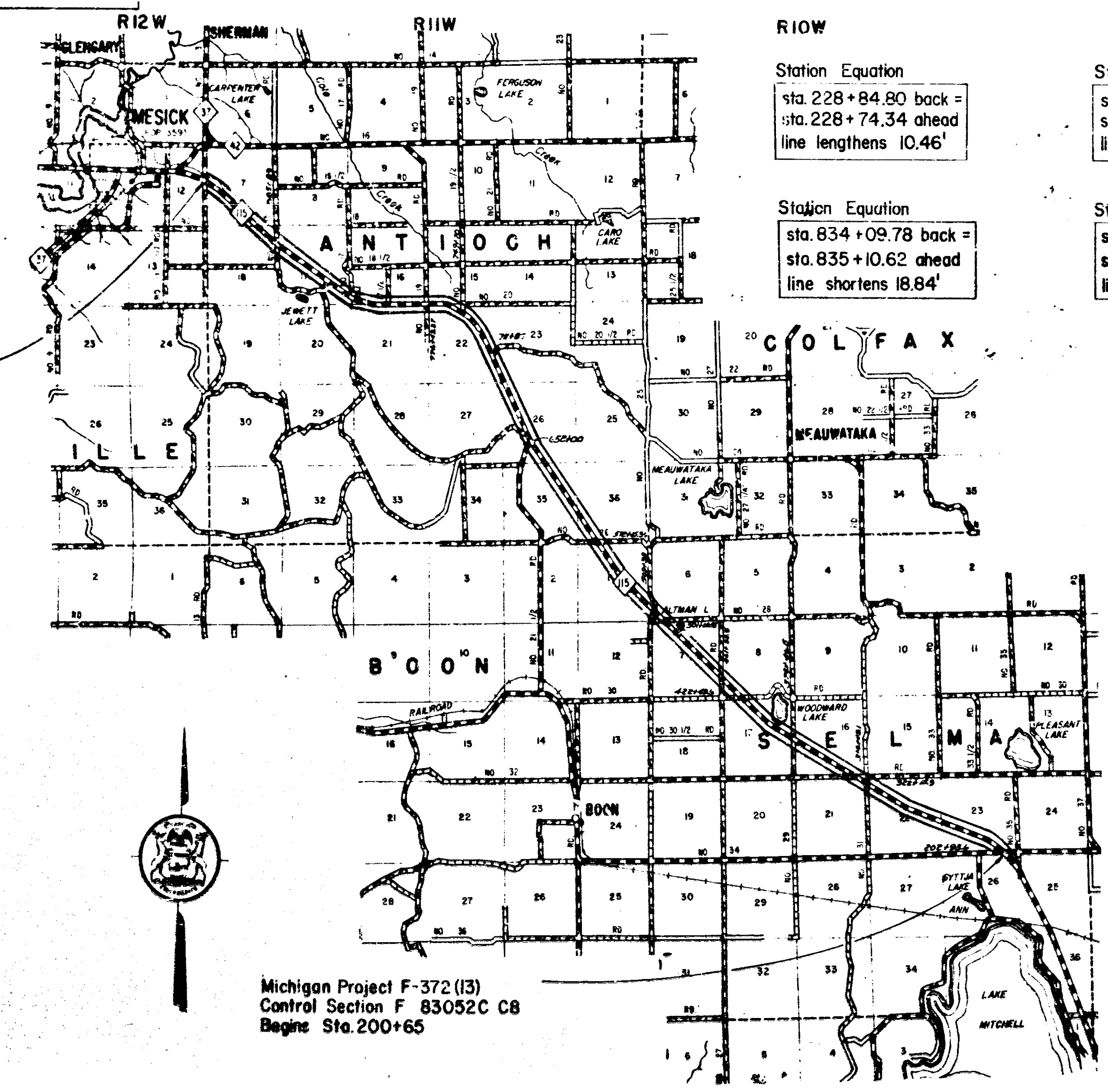
PLANS OF PROPOSED
MICHIGAN PROJECT F-372(13)
CONTROL SECTION F 83052C C8
MESICK-CADILLAC ROAD
 WEXFORD COUNTY
 SELMA-BOON-ANTIOCH & SPRINGVILLE TOWNSHIPS

ROAD PLANS	SHEET NOS
TITLE	1
TYPICAL CROSS SECTIONS	2
NOTE SHEET	
PLANS & PROFILES	3-29
SPECIAL DETAILS	30
MASS DIAGRAMS	
QUANTITY SHEETS	31
SIGNING PLANS	
BRIDGE PLANS	

Michigan Project F-372(13)
Control Section F 83052C C8
End's Sta. 95+4R.92

TITLE SHEET LEGEND

	EXISTING	CONDITION
PROPOSED PROJECT		
T.L. OR F.A. PAVED		
T.L. OR F.A. BITUMINOUS		
T.L. OR F.A. GRAVEL		
T.L. OR F.A. UNIMPROVED		
NON T.L. OR F.A. PAVED		
NON T.L. OR F.A. BITUMINOUS		
NON T.L. OR F.A. GRAVEL		
NON T.L. OR F.A. UNIMPROVED		
COUNTY LINE		
CITY OR VILLAGE LIMITS		
TOWNSHIP LINE		
SECTION LINE		
RAILROADS		
	INTERCHANGES	
	ROAD SKEW RATIOS	
	R.R. CROSSINGS	



Michigan Project F-372(13)
Control Section F 83052C C8
Begins Sta. 200+65

Item # 1095

CONTRACT FOR 22 Bituminous Center Line Course	
DIVISION APPROVAL	
CHECKED	1-22-62
	DATE
RECOMMENDED FOR APPROVAL	1-24-62
	DATE
RECOMMENDED FOR APPROVAL	1-22-62
	DATE
OFFICES OF DESIGN & CONSTRUCTION	
APPROVED	1-22-62
	DATE
APPROVED	1/23/62
	DATE
STATE HIGHWAY DEPARTMENT APPROVAL	
APPROVED BY	1-22-62
	DATE
DIRECTOR OF ENGINEERING - CHIEF ENGINEER	
PLANS PREPARED BY	DATE
MICHIGAN STATE HIGHWAY DEPARTMENT	APPROVED
	DIVISION ENGINEER
	DATE
DEPARTMENT OF COMMERCE BUREAU OF PUBLIC ROADS	
83052C C8	
Control Section	FEDERAL PROJECT
83052	F-372(13)
SHEET NO	TOTAL SHEETS
1	1

CONTROL SECTION F 83052C C8

Witnesses to POT
 1/4" Pipe Sta. 671+20.88
 3/4" W 14.8' 26' W Cherry
 3/4" W 16.0' 16' Elm

BM *221 El. 1132.77
 Spike in 12" Elm
 92 Lt. Sta. 671+97

Witnesses to POT
 1/4" Pipe Sta. 674+12.79
 3/4" W 42.22' 8' Cherry
 3/4" W 25.97' 16' Maple
 1/4" W 38.35' 16' Elm

BM *222 El. 1117.92
 Spike in 16" Elm
 96 Lt. Sta. 678+08

BM *223 El. 1106.96
 Spike in 10" Elm
 110 Lt. Sta. 686+48

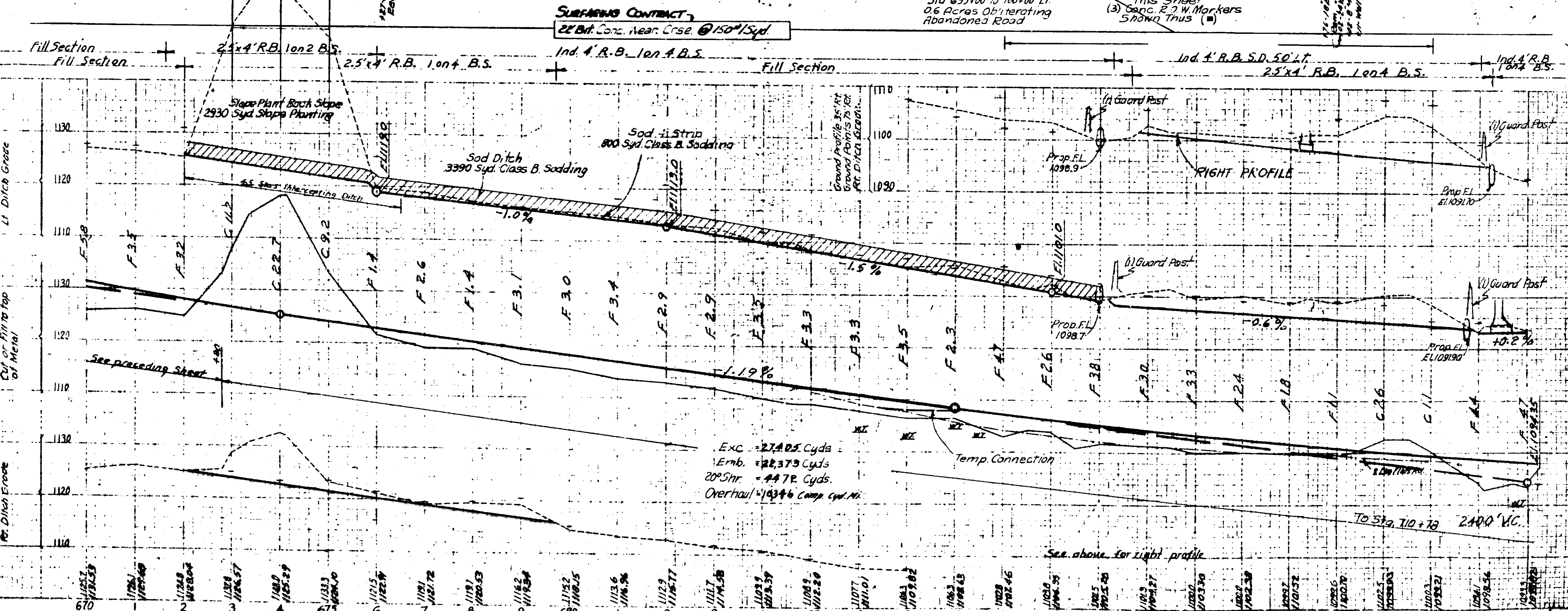
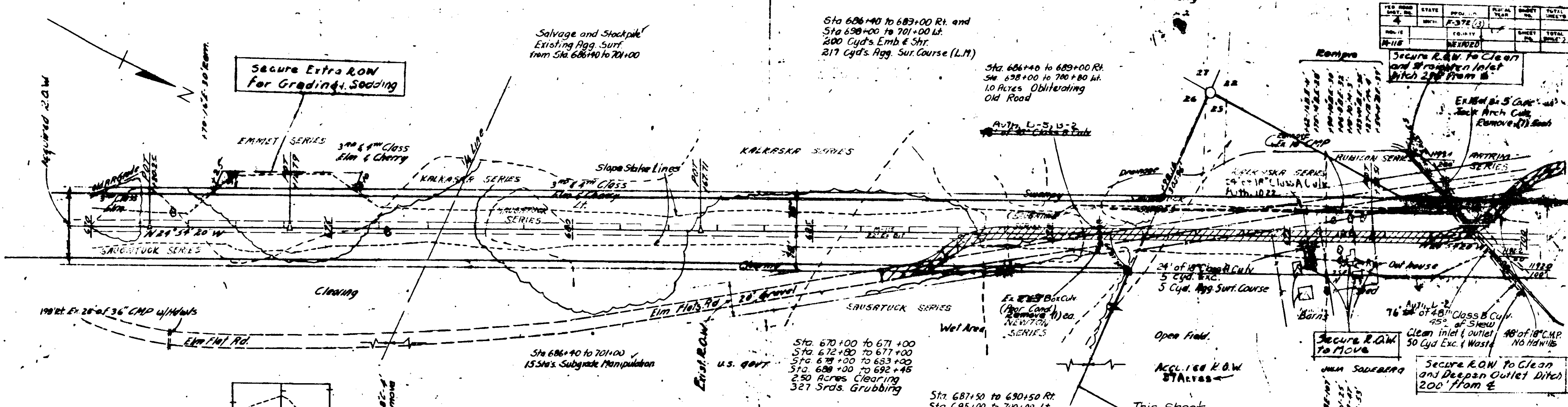
Witnesses to POT
 1/4" Pipe Sta. 682+62.77
 3/4" W 77.84' 8' Maple
 3/4" W 74.85' 11' Elm
 3/4" W 73.86' 8' Maple

BM *224 El. 1058.73
 Spike in 17" Hemlock
 88 Lt. Sta. 685+08

Witnesses to Sec. Cor.
 Corner to Sec. 22, T26N, R11W
 7.23N, R11W 1/4" Pipe
 3.32E, 14.85' 1/4" Hemlock
 3.72E, 14.85' 1/4" Cherry
 N77W 21.40' 5' Cherry

Witnesses to POT
 1/4" Pipe Sta. 696+72.51
 3/4" W 60.37' 10' Oak
 3/4" W 43.34' 11' Oak

NO.	DATE	BY	TOTAL	REVISION
1	10/27/20	F-37E (3)		
2				
3				
4				



Exc. = 27,405 Cyds
 Emb. = 22,379 Cyds
 20" Shr. = 4,478 Cyds
 Overhaul = 1,034 Comp. Cyl. Mi.

83052C08