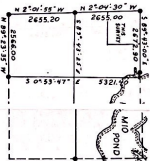
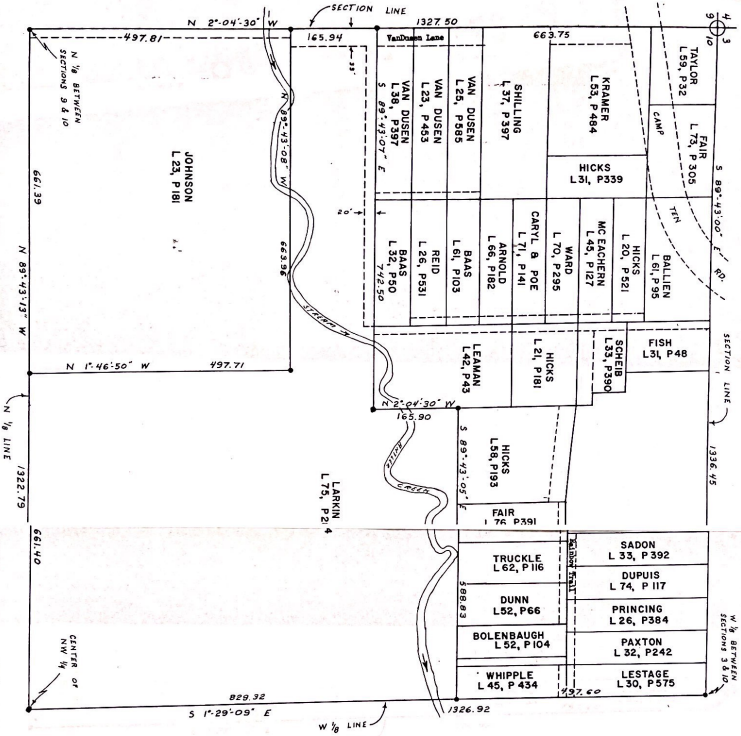


THE N.W. 1/4 OF THE N.W. 1/4 OF SECTION 10, T 26 N, R 12 E, BIG CREEK TOWNSHIP, OSCODA COUNTY, MICHIGAN

N.C.C.

FILED
 A. E. BROWN, C. M.
 Deft. 7-26-1922.
 RAYMOND LEE
 Plaintiff.
 OSCODA COUNTY, MICHIGAN



SECTION 10, T 26 N, R 12 E
 MICHIGAN
 OSCODA COUNTY
 1922 J. 1920

PERSONS OR PARTIES: To duly identify the boundaries of a parcel of land within Section 10, T 26 N, R 12 E, of the Township of Big Creek, Oscoda County, Michigan, as shown on the attached map, the following facts are stated: (1) The Township of Big Creek, Michigan, is divided into 36 sections, each containing 36 acres. (2) The North 1/2 of the South 1/2 of the said NW 1/4 of Section 10, T 26 N, R 12 E, of the Township of Big Creek, Michigan, is divided into 10 parcels, each containing 3.6 acres. (3) The parcels are as follows: Parcel 1, 3.6 acres, owned by Taylor, L 33, P 302; Parcel 2, 3.6 acres, owned by Fair, L 73, P 305; Parcel 3, 3.6 acres, owned by McEachern, L 53, P 484; Parcel 4, 3.6 acres, owned by Hickman, L 31, P 141; Parcel 5, 3.6 acres, owned by Johnson, L 23, P 181; Parcel 6, 3.6 acres, owned by Van Dusen, L 23, P 453; Parcel 7, 3.6 acres, owned by Shilling, L 37, P 387; Parcel 8, 3.6 acres, owned by Ward, L 70, P 285; Parcel 9, 3.6 acres, owned by Sadon, L 33, P 392; Parcel 10, 3.6 acres, owned by Dupuis, L 74, P 117; Parcel 11, 3.6 acres, owned by Pringing, L 25, P 384; Parcel 12, 3.6 acres, owned by Paxton, L 32, P 242; Parcel 13, 3.6 acres, owned by Lestage, L 30, P 575; Parcel 14, 3.6 acres, owned by Larkin, L 73, P 214; Parcel 15, 3.6 acres, owned by Whipple, L 45, P 434; Parcel 16, 3.6 acres, owned by Trunkle, L 62, P 116; Parcel 17, 3.6 acres, owned by Dunn, L 52, P 66; Parcel 18, 3.6 acres, owned by Bolenbaugh, L 52, P 104; Parcel 19, 3.6 acres, owned by Leaman, L 61, P 103; Parcel 20, 3.6 acres, owned by Reed, L 25, P 331; Parcel 21, 3.6 acres, owned by Hicks, L 58, P 193; Parcel 22, 3.6 acres, owned by Fair, L 74, P 391; Parcel 23, 3.6 acres, owned by Trunkle, L 62, P 116; Parcel 24, 3.6 acres, owned by Dunn, L 52, P 66; Parcel 25, 3.6 acres, owned by Bolenbaugh, L 52, P 104; Parcel 26, 3.6 acres, owned by Whipple, L 45, P 434; Parcel 27, 3.6 acres, owned by Larkin, L 73, P 214; Parcel 28, 3.6 acres, owned by Trunkle, L 62, P 116; Parcel 29, 3.6 acres, owned by Dunn, L 52, P 66; Parcel 30, 3.6 acres, owned by Bolenbaugh, L 52, P 104; Parcel 31, 3.6 acres, owned by Whipple, L 45, P 434; Parcel 32, 3.6 acres, owned by Larkin, L 73, P 214; Parcel 33, 3.6 acres, owned by Trunkle, L 62, P 116; Parcel 34, 3.6 acres, owned by Dunn, L 52, P 66; Parcel 35, 3.6 acres, owned by Bolenbaugh, L 52, P 104; Parcel 36, 3.6 acres, owned by Whipple, L 45, P 434.

SECTION 10, T 26 N, R 12 E
 MICHIGAN
 OSCODA COUNTY
 1922 J. 1920

SECTION 10, T 26 N, R 12 E
 MICHIGAN
 OSCODA COUNTY
 1922 J. 1920

SECTION 10, T 26 N, R 12 E
 MICHIGAN
 OSCODA COUNTY
 1922 J. 1920