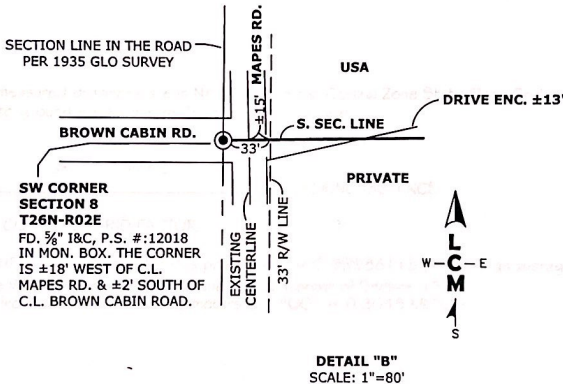
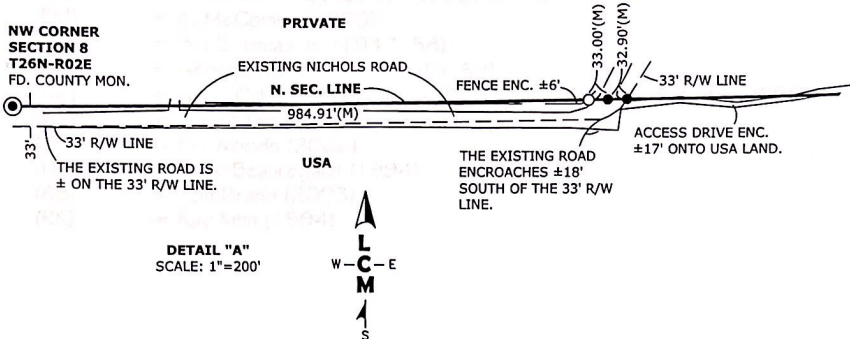


CERTIFICATE OF SURVEY

SURVEYORS LEGEND



I HEREBY CERTIFY THAT I HAVE SURVEYED THE PARCEL OF LAND DESCRIBED, THAT SAID SURVEY WAS PERFORMED WITH A FIELD ERROR OF CLOSURE "OF 1 IN 5000 OR GREATER", AND THAT I HAVE FULLY COMPLIED WITH THE REQUIREMENTS OF ACT #132, P.A. 1970.

Christopher J. McCrimmon
 Christopher J. McCrimmon, P.S. No. 47962 Dated: 5/20 2011

<p>Surveying & Engineering LLC 1-888-223-4235 PH. 231-743-3000 Fax. 231-743-3001 225 E. MAIN ST. MARION, MI 49865</p>	DATE: 03/14/2011	CLIENT: USFS	FB/PG: SEE FILE
	DRN BY: FTW	PART OF SECTION 8, T26N-R02E, BIG CREEK TOWNSHIP NE, OSCODA COUNTY, MICHIGAN	JOB NO.: 10023
	CHD BY: WES/CJM		
	SHEET 2 OF 5		

CERTIFICATE OF SURVEY

SURVEYORS LEGEND

- (G.L.O.) = GLO Dependent Resurvey by Guy R. Veal (1935)
- (FK) = Frederick King (1993, 95, 98, 2001)
- (EM) = E. McCombs (1979)
- (SL) = S.J.E. Lucas Jr. (1947, 58)
- (GH) = George Henning (1940, 48, 59)
- (NC) = Norm Caldwell (1964, 70, 73, 74, 75, 76, 78, 79, 90, 2006)
- (WL) = Wayne Lewis (2000)
- (BW) = Bill Woods (2006)
- (LB) = Larry Beauregard (1994)
- (RB) = Ron Brand (2003)
- (RK) = Ray Kihn (1994)

LEGAL DESCRIPTION OF THE UNITED STATES GOVERNMENT LAND:

The South 1/2 of the Northeast 1/4 AND the Southeast 1/4 AND the Southwest 1/4 AND the Northwest 1/4, Section 8, T26N-R02E, Twp. of Big Creek, Oscoda County, Michigan.

The shown measured distances are in NAD 83 Michigan Central Zone State Plane Grid in international feet. The conversion to ground distance is performed by the formula:

$$\text{GRID DISTANCE} = \text{GROUND DISTANCE}$$

COMBINED GRID FACTOR

The COMBINED FACTOR used for this project was = 0.99988118, which is an average combined factor between the W 1/4 Corner of Section 6 and the SE Corner of Section 15. Conversion from international feet to meters is 1 FOOT = 0.3048 METERS.

NOTES: The STATE PLANE COORDINATES for this project were established using the MICHIGAN CORS NETWORK - NAD 83 (CORS 1996).



I HEREBY CERTIFY THAT I HAVE SURVEYED THE PARCEL OF LAND DESCRIBED, THAT SAID SURVEY WAS PERFORMED WITH A FIELD ERROR OF CLOSURE "OF 1 IN 5000 OR GREATER", AND THAT I HAVE FULLY COMPLIED WITH THE REQUIREMENTS OF ACT #132, P.A. 1970.

Christopher J. McCrimmon
 Christopher J. McCrimmon, P.S. No. 47962 Dated: 5/20 2011

	Surveying & Engineering LLC	DATE: 03/14/2011	CLIENT: USFS	
	1-888-223-4235 PH. 231-743-3000 Fax. 231-743-3001 225 E. MAIN ST. MARION, MI 49865	DRN BY: FTW	PART OF SECTION 8, T26N-R02E, BIG CREEK TOWNSHIP NE, OSCODA COUNTY, MICHIGAN	FB/PG: SEE FILE
		CHD BY: WES/CJM		JOB NO.: 10023
		SHEET 3 OF 5		

CERTIFICATE OF SURVEY

N.W. CORNER
SECTION 8
T26N-R02E
 FD. OSCODA COUNTY MON.
 N73E - 19" MAPLE STUMP - 36.84'
 N82E - 14" MAPLE - 51.61'
 S34E - NICHOLS RD. SIGN POST - 62.60'
 S36W - POWER POLE - 48.22'
 S89W - 44" R. PINE - 88.55'

WEST 1/4 CORNER
SECTION 8
T26N-R02E
 FD. 1/2" IRON AND CAP,
 P.S. #: 43046.
 EAST - ANGLE IRON - 49.62'
 S58E - 19" B. OAK - 68.81'
 N55W - POWER POLE - 69.18'
 N13W - 14" NORWAY - 77.98'

S.W. CORNER
SECTION 8
T26N-R02E
 FD. 5/8" IRON AND CAP,
 L.S. #: 12018.
 N51E - 4" W. PINE - 78.76'
 N88E - 24" B. OAK - 55.66'
 S57W - POWER POLE - 53.84'
 N55W - 16" B. OAK - 87.24'

SOUTH 1/4 CORNER
SECTION 8
T26N-R02E
 FD. USGLO MON.
 N48E - 22" NORWAY PINE - 184.18'
 N65E - 12" R. PINE - 49.18'
 S17W - 8" J. PINE - 18.29'
 S74W - 16" B. OAK - 48.84'
 N87W - 11" R. PINE - 45.82'
 N15W - 14" R. PINE - 63.87'

S.E. CORNER
SECTION 8
T26N-R02E
 FD. USGLO MON.
 N75E - 5" R. PINE - 3.82'
 S30E - 4" R. PINE - 14.81'
 S88W - 5" B. OAK - 17.24'
 N01W - 4" R. PINE - 9.57'

EAST 1/4 CORNER
SECTION 8
T26N-R02E
 FD. USGLO MON.
 SOUTH - 5" J. PINE - 18.78'
 S53W - 5" J. PINE - 36.87'
 S76W - 4" J. PINE - 23.25'
 N37W - 4" R. PINE - 53.85'
 N32W - 8" J. PINE - 38.73'

N.E. CORNER
SECTION 8
T26N-R02E
 FD. USGLO MON.
 N34E - 13" CEDAR - 12.19'
 N69E - 11" CEDAR - 36.84'
 S67E - CEDAR - 6.96'
 S30E - 7" CEDAR - 11.99'
 S23W - 8" CEDAR - 8.62'
 WEST - 8" TAMARACK - 33.64'

NORTH 1/2 CORNER
SECTION 8
T26N-R02E
 FD. USGLO MON.
 N22E - 4" W. PINE - 14.66'
 N49E - USFS POST - 1'
 N80E - 19" R. PINE - 22.50'
 SOUTH - C.L. TRAIL RD. - 30'+/-
 S43E - 14" R. PINE - 43.80'
 S85W - 29" W. PINE - 39.80'
 N40W - 5" W. PINE - 19.72'

Corner 5; The C-N 1/16th Corner of Section 8, T26N-R02E
 Set a 1/2" iron and cap at a subdivisional position.
 N05E - set 60d nail in E face of 6" Tw. W. Pine - 52.59'
 S60E - set 60d nail NE face of 12" R. Pine - 60.17'
 N35W - set 60d nail in NE face of 10" Maple - 37.53'
 North - Caronite Post - 1'



I HEREBY CERTIFY THAT I HAVE SURVEYED THE PARCEL OF LAND DESCRIBED, THAT SAID SURVEY WAS PERFORMED WITH A FIELD ERROR OF CLOSURE "OF 1 IN 5000 OR GREATER", AND THAT I HAVE FULLY COMPLIED WITH THE REQUIREMENTS OF ACT #132, P.A. 1970.

Christopher J. McCrimmon

Christopher J. McCrimmon, P.S. No. 47962

Dated: 5/16 2011



Surveying & Engineering LLC
 1-888-223-4235
 PH. 231-743-3000 Fax. 231-743-3001
 225 E. MAIN ST. MARION, MI 49865

DATE: 03/14/2011
 DRN BY: FTW
 CHD BY: WES/CJM
 SHEET 4 OF 5

CLIENT: USFS
 PART OF SECTION 8,
 T26N-R02E, BIG CREEK TOWNSHIP NE,
 OSCODA COUNTY, MICHIGAN

FB/PG:
 SEE FILE
 JOB NO.:
 10023

CERTIFICATE OF SURVEY

INPUT
 State Plane, NAD83
 2112 - Michigan Central, Int. Feet
 Vertical - NAVD83, Int. Feet

OUTPUT
 Geographic, NAD83
 Vertical - NAVD83, Int. Feet

NW826N02E **81**

Northing/Y: 492330.4900 Latitude: 44 40 01.33800
 Easting/X: 19720157.0500 Longitude: 84 13 54.05023
 Elevation/Z: 1034.840 Elevation/Z: 1034.840
 Convergence: 0 05 43.27852
 Scale Factor: 0.999924277
 Combined Factor: 0.999880269

NE826N02E **117**

Northing/Y: 492417.9830 Latitude: 44 40 02.10782
 Easting/X: 1972483.2450 Longitude: 84 12 40.34551
 Elevation/Z: 983.440 Elevation/Z: 983.440
 Convergence: 0 06 35.34408
 Scale Factor: 0.999924259
 Combined Factor: 0.999882712

W4826N02E **83**

Northing/Y: 489691.1600 Latitude: 44 39 35.27397
 Easting/X: 19720196.4600 Longitude: 84 13 53.56573
 Elevation/Z: 1045.340 Elevation/Z: 1045.340
 Convergence: 0 05 43.62077
 Scale Factor: 0.999924890
 Combined Factor: 0.999880379

SE826N02E **120**

Northing/Y: 487125.1060 Latitude: 44 39 09.83919
 Easting/X: 19725561.7010 Longitude: 84 12 39.40047
 Elevation/Z: 1051.930 Elevation/Z: 1051.930
 Convergence: 0 06 36.01166
 Scale Factor: 0.999925505
 Combined Factor: 0.999880679

SW826N02E **84**

Northing/Y: 487040.5500 Latitude: 44 39 09.17757
 Easting/X: 19720233.7900 Longitude: 84 13 53.11020
 Elevation/Z: 1043.310 Elevation/Z: 1043.310
 Convergence: 0 05 43.94256
 Scale Factor: 0.999925521
 Combined Factor: 0.999881105

N 1/16TH ON W. LINE **200**

Northing/Y: 491010.8180 Latitude: 44 39 48.30592
 Easting/X: 19720176.6850 Longitude: 84 13 53.80893
 Elevation/Z: 1041.935 Elevation/Z: 1041.935
 Convergence: 0 05 43.44597
 Scale Factor: 0.999924582
 Combined Factor: 0.999880234

N14826N02E **106**

Northing/Y: 492374.1770 Latitude: 44 40 01.72398
 Easting/X: 19722820.2230 Longitude: 84 13 17.19689
 Elevation/Z: 1032.090 Elevation/Z: 1032.090
 Convergence: 0 06 09.31199
 Scale Factor: 0.999924268
 Combined Factor: 0.999880393

W 1/16TH **236**

Northing/Y: 487066.9520 Latitude: 44 39 09.33594
 Easting/X: 19721366.0490 Longitude: 84 13 34.67894
 Elevation/Z: 1049.757 Elevation/Z: 1049.757
 Convergence: 0 05 56.96254
 Scale Factor: 0.999925517
 Combined Factor: 0.999880793

N 1/16TH ON E. LINE **107**

Northing/Y: 491096.3790 Latitude: 44 39 49.06254
 Easting/X: 19725303.0650 Longitude: 84 12 40.10529
 Elevation/Z: 1032.640 Elevation/Z: 1032.640
 Convergence: 0 06 35.53306
 Scale Factor: 0.999924564
 Combined Factor: 0.999880663

NE 1/16TH **381**

Northing/Y: 491075.1780 Latitude: 44 39 48.87204
 Easting/X: 19724172.2400 Longitude: 84 12 58.52136
 Elevation/Z: 1036.614 Elevation/Z: 1036.614
 Convergence: 0 06 22.50452
 Scale Factor: 0.999924568
 Combined Factor: 0.999880477

E4826N02E **108**

Northing/Y: 489774.9010 Latitude: 44 39 36.00666
 Easting/X: 19725522.7270 Longitude: 84 12 39.66933
 Elevation/Z: 1036.290 Elevation/Z: 1036.290
 Convergence: 0 06 35.88046
 Scale Factor: 0.999924873
 Combined Factor: 0.999880797

E 1/16TH **387**

Northing/Y: 492396.4880 Latitude: 44 40 01.92033
 Easting/X: 19724152.6260 Longitude: 84 12 58.75886
 Elevation/Z: 1012.625 Elevation/Z: 1012.625
 Convergence: 0 06 23.33675
 Scale Factor: 0.999924263
 Combined Factor: 0.999881320

S14826N02E **109**

Northing/Y: 487085.7430 Latitude: 44 39 09.49931
 Easting/X: 19722898.6700 Longitude: 84 13 16.24263
 Elevation/Z: 1051.120 Elevation/Z: 1051.120
 Convergence: 0 05 09.98609
 Scale Factor: 0.999925512
 Combined Factor: 0.999880725

CN 1/16TH **3023**

Northing/Y: 491053.0040 Latitude: 44 39 48.68299
 Easting/X: 19722839.8090 Longitude: 84 13 16.95860
 Elevation/Z: 1030.000 Elevation/Z: 1030.000
 Convergence: 0 06 09.48032
 Scale Factor: 0.999924573
 Combined Factor: 0.999880797



I HEREBY CERTIFY THAT I HAVE SURVEYED THE PARCEL OF LAND DESCRIBED, THAT SAID SURVEY WAS PERFORMED WITH A FIELD ERROR OF CLOSURE "OF 1 IN 5000 OR GREATER", AND THAT I HAVE FULLY COMPLIED WITH THE REQUIREMENTS OF ACT #132, P.A. 1970.

Christopher J. McCrimmon

Christopher J. McCrimmon, P.S. No. 47962 Dated: 5/20 2011



Surveying & Engineering LLC
 1-888-223-4235
 PH. 231-743-3000 Fax. 231-743-3001
 225 E. MAIN ST. MARION, MI 49865

DATE: 03/14/2011
 CLIENT: USFS
 DRN BY: FTW
 CHD BY: WES/CJM
 SHEET 5 OF 5

PART OF SECTION 8,
 T26N-R02E, BIG CREEK TOWNSHIP NE,
 OSCODA COUNTY, MICHIGAN

FB/PG:
 SEE FILE
 JOB NO.:
 10023

LAND CORNER RECORDATION CERTIFICATE
Filing Requirement of Act 74, Mich. P.A. 1970

For corners in

<u>Oscoda</u> (County)	Located In:	Corner Code #
1. Public Land Survey	T _____ R _____	_____
	T _____ R _____	_____
	T _____ R _____	_____
	T _____ R _____	_____
2. Property Controlling in Section	S <u>8</u> T <u>26N</u> R <u>02E</u>	<u>5</u>
	S <u>16</u> T <u>26N</u> R <u>02E</u>	<u>10</u>
3. Miscellaneous Property in Sec.	S _____ T _____ R _____	_____
	S _____ T _____ R _____	_____

Register of Deeds Stamp & File
Number

4. Lot No. _____, Recorded Plat _____

5. Private Claims _____

I, Christopher J. McCrimmon, in a field survey on February 22, 2011 do hereby state that under requirements of P.A. 74, Michigan P.A. of 1970, the corner points mentioned in lines 1 and 2 above were in conformance with regulations and rules therefore as required in the current manual of survey instructions of the United States Department of the Interior, Bureau of Land Management or by a decree of a Court of Law and /or that the corner points mentioned in lines 3, 4 and 5 above were in conformance with the rules of the Michigan Board of Land Surveyors or by a Decree of a Court of Law; established, re-established, monumented, recovered, found as expressed below:

NOTE: Not more than 2 corners, all in the same town and range, may be recorded on this certificate.

A. Description of original monument and accessories and/or subsequent restoration:

Corner 5; The C-N 1/16th Corner of Section 8, T26N-R02E

- I didn't have any previous history on this corner position.

Corner 10; The S. 1/16th Corner on the West Section Line of Section 16, T26N-R02E

- I didn't have any previous history on this corner position.

B. Description of corner evidence found and/or method applied in restoring or reestablishing corner:

Corner 5; The C-N 1/16th Corner of Section 8, T26N-R02E

I didn't find any evidence of a corner at this position while searching with a magnetic locator. I set a 1/2" iron and cap, P.S. #:47962 flush with the ground at a subdivisional position and accepted it as the position of the corner. There is an old single strand wire growing in a tree +/- 8' East of the corner position. The wire fence zig - zags to the NE from this position.

Corner 10; The S. 1/16th Corner on the West Section Line of Section 16, T26N-R02E

I found a 1" x 1.9' long pipe within 0.34' of a subdivisional position and added a 1/2" iron and cap inside of said pipe, I accepted this pipe as the position of the corner. This corner is +/- 25' West and +/- 6' South of a corner fence post for a fence going to the North and East.

C. Description of monument for corner and accessories established to perpetuate locating the position of the corner:

Corner 5; The C-N 1/16th Corner of Section 8, T26N-R02E

Set a 1/2" iron and cap at a subdivisional position.

N05E - set 60d nail in E face of 6" Tw. W. Pine - 52.59'

S60E - set 60d nail NE face of 12" R. Pine - 60.17'

N35W - set 60d nail in NE face of 10" Maple - 37.53'

North - Carsonite Post - 1'

Corner 10; The S. 1/16th Corner on the

West Section Line of Section 16, T26N-R02E

Set a 1/2" iron and cap inside of a found 1" pipe.

S75E - set 60d nail in N face of 9" Cedar - 51.33'

S70W - set 60d nail in S face of 4" Ash - 36.16'

N49W - set 60d nail in SW face of 6" Maple - 45.71'

North - Carsonite Post - 1'

Signed by Chris J. McCrimmon

Date 3/17/2011

Surveyor's Michigan License No. 47962



