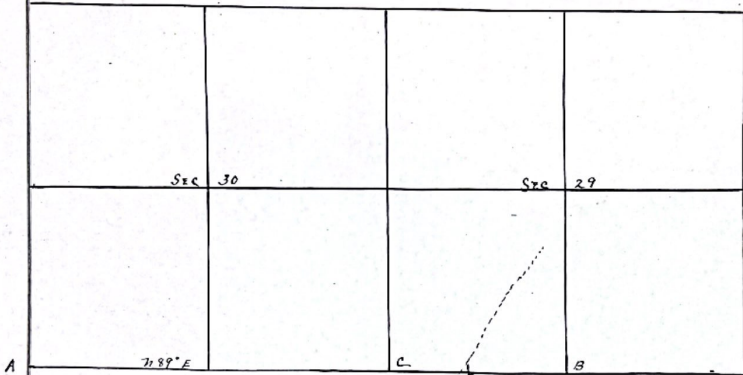


Section 29 and 30 from 14-11 Goodwell
 Surveyed Sept-4 1897
 Delos Anderson
 County Surveyor

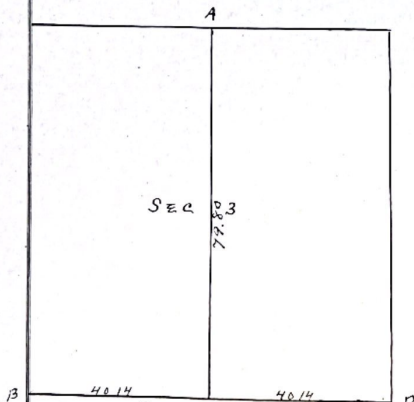


107.77 to State Road
 A { Pine Stump 20 71 22 E 34 1/2
 " " 18 S 72 W 32

C. Hemlock 6 SW 1 Lind

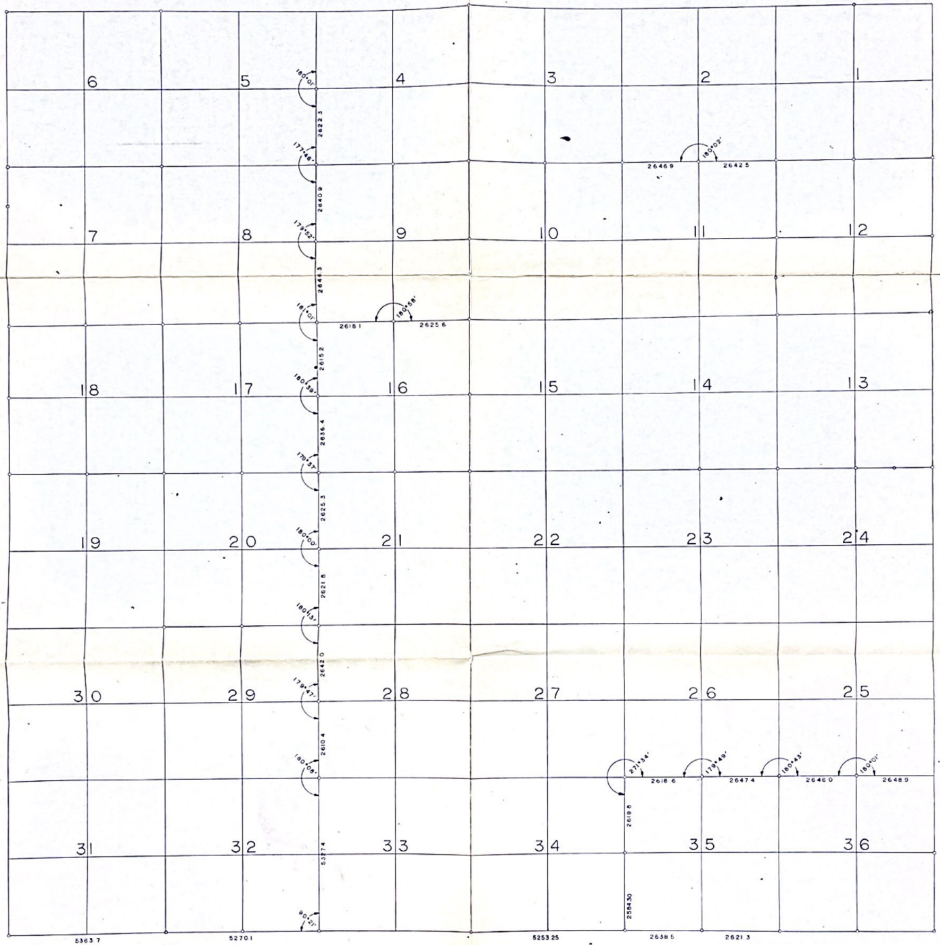
B { Pine 22 71 75 1/2 E 45
 Old Walnut 71 4 SW 13

A W B 121.38



A { Pine Stump 24 S 39 E 23
 Old Corner

Sec 3 15-14 Braava
 Surveyed Sept. 14 1897
 Delos G Anderson
 County Surveyor



GOODWELL TWP T14N, R11W

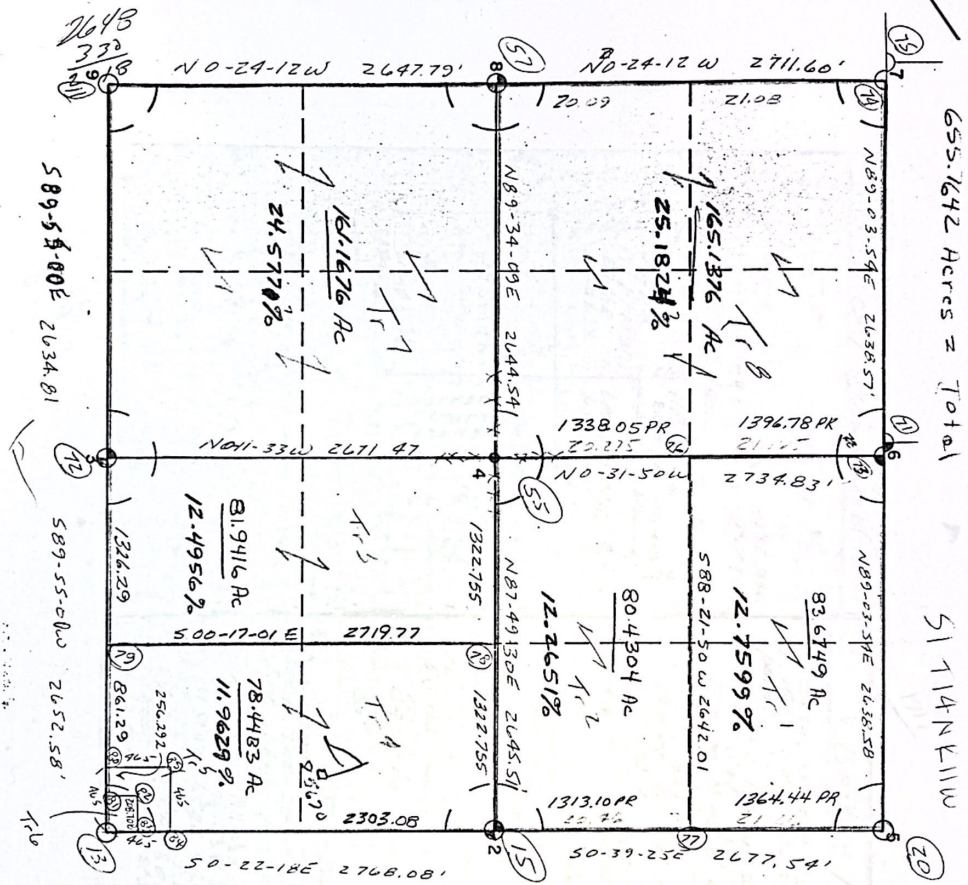
655.1642 Acres = Total

51714 N Kilim

Wilcox Notes

DOB 7/3/85

1-13-88
DBS



2	
3	
4	
5	
6	
7	
8	Tr. #5 - <u>3.9638</u> AC 0.6045 %
9	Tr. #6 - <u>1.0000</u> AC 0.1525 %

12-28-87
Stamps

pg 53

NW cor, sec 1, sat Rdn, Ely E (NW)
 S 85° W 1/4 in N Side w 1/4 in 2807
 N 45° W 1/4 in S Side w 1/4 in 2720 120°
 NW cor 1/4 in E Side w 1/4 in 1852
 N 45° E 1/4 in S Side 8° 10' 20.25

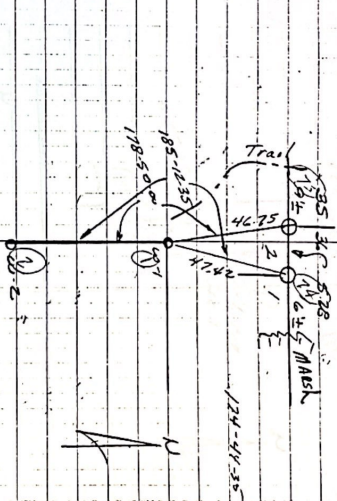
S 4 cor, Sec 36, sat Rdn, W 1/4 in 1852

S 80° W 1/4 in 22.94
 N 35° W 1/4 in 27.20
 N 65° W 1/4 in 17.25
 N 30° E 1/4 in 14.80

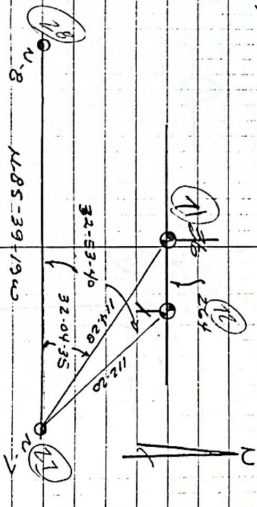
N 1/4 cor sec 1, sat Rdn - 53 N 8 1/2 in 414
 S 80 W 8 DBL ORK 3306 W Side Tree
 S 10 W 8 1/2 in 8 58 W Side
 N 0 8 1/2 E 20' ORK 14.62 S 2 Side
 N 0 0 8 1/2 E 3' ORK 6.48 W Side Tree
 S 1/4 cor, Sec 36
 S 85 W 8 1/2 ORK 34.74
 S 0 5 E 8 1/2 in 8 1/2 in 8 25
 N 80 E 20' ORK 12.11
 N 30 E 3' ORK 7.13

Sec 1, T14N, R11W

Waterline
87525



3-7-06-31



12-25

12-28-81

Sch. Post
Mogus

1/4 cor Sec 1 - Set Rod/emo

in 1/4 S Fe line

565 900 80° Brackin (N 1/4 11.5 id) 1436

N 40° W 6° 1/2 mph (5.5 id) 1719

N 70° E 5° 1/2 mph (5.5 id) 1719

S 30° E 6° 1/2 mph (11.5 id) 1846

STY COR, Sec 1, Set 38 1/2 5 8 5 1/2
North Fe. Cor Post 4336

N 50° E 7° 1/2 mph 5186

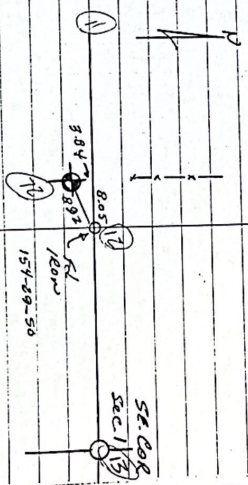
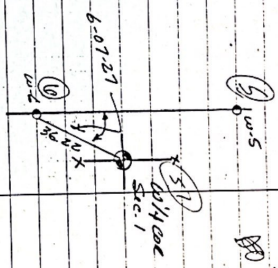
S 25° E 9° Oak 3364

S 60° W 11° Oak 3515

205-4

Sec 1, 714 N, R. 11.20

Wolenski
N 87525



REMONUM

MAY 28 1987

COMMISSIONER

1996 Newaygo County Remonumentation Project

NEWAYGO COUNTY
REGISTER OF DEEDS
LINDA M. BROWNLAND CORNER RECORDATION CERTIFICATE
FILING REQUIREMENT of Act 74, Mich. P.A. 1970

'97 FEB 12 PM 4 45

For corners in <u>Newaygo</u> (County)	Located In:	Corner Code #
1. Public Land Survey	T 14N R 11W	MS
	T R	
	T R	
	T R	
2. Property Controlling in Section	S T R	
	S T R	
3. Miscellaneous Property in Sec.	S T R	
	S T R	
4. Lot No. _____, Recorded Plat _____		
5. Private Claims _____		

VOL. 2 PAGE 3

Register of Deeds Stamp & File Number

	A	B	C	D	E	F	G	H	I	J	K	L	M
1													
2													
3													
4													
5													
6													
7													
8													
9													
10													
11													
12													
13													

I, Norman L. Ochs, in a field survey on September 11, 1986, do hereby certify that under requirements of P. A. 74, Michigan P.A. of 1970, the corner points mentioned in lines 1 and 2 above were in conformance with regulations and rules therefore as required in the current manual of survey instructions of the United States Department of the Interior, Bureau of Land Management or by a decree of a Court of Law and/or that the corner points mentioned in lines 3, 4 and 5 above were in conformance with the rules of the Michigan Board of Land Surveyors or by a Decree of a Court of Law, established, re-established, monumented, re-monumented, recovered, found as expressed below:

Note: Not more than 4 corners, all in the same town and range, may be recorded on this certificate.

Southeast Corner, Section 1, Goodwell Township, Newaygo County, Michigan

A. DESCRIPTION OF ORIGINAL MONUMENT AND ACCESSORIES AND/OR SUBSEQUENT RESTORATION:

G.L.C. John Hodgson 1837
18" Maple S47°W 22 Links (14.52)"#1
16" Maple N49°W 38 Links (23.76)"#2

NCRC Sheet
11" Gas Pipe
12" Pine N20°W 42.7" #6
12" Pine N80°W 82.7" #7
12" Pine S70°W 84.6" #8

Marvin D. Pike
December 6, 1977 Found 1 1/2" Pipe
12" Oak S20°E 45.42" #10
12" Pine S70°W 85.91" #8
12" Oak N40°E 44.24" #11

Lyle S. Shepherd R.L.S. #503
Book B Page's 78 & 79 July 27, 1917
Well Point and Pine Stake
24" Pine Stump S18°E 38 Links (23.76)" #3
30" Pine Stump N78°W 53 Links (34.58)" #4
36" Pine Stump S27°30W 1 Chains 34 Links (68.44)" #5

Robert A Griffin R.L.S. #19584 1976
Telephone Pole N22°E 75.48" #9

John Mielke R.L.S. #25859
Project No. 81-080 December 5, 1981
Found 5/8" Bar
18" Oak S20°E 45.42" #10
8" Pine N75°W 65.80" #12
20" Oak N70°E 44.25" #11

OVER 5

B. DESCRIPTION OF CORNER EVIDENCE FOUND AND/OR METHOD APPLIED IN RESTORING OR REESTABLISHING CORNER:

Found 1/2" red and cap #33139 (Tom Sage) in centerline of road going North and the centerline of the East and West road is 3 feet North and the condition of the recorded witness are: #1 thru #4 gone, #5 good condition, #6 and #7 gone, #8 good condition, #9 gone, #10 good condition, #11 gone, #12 good condition, #13 gone, #14 good condition.

C. DESCRIPTION OF MONUMENT FOR CORNER AND ACCESSORIES ESTABLISHED TO PERPETUATE LOCATING THE POSITION OF THE CORNER:

Removed 1/2" red and cap #33139 and set 4" diameter Harrison cast iron monument 20" long marked "County Surveyor" as a substantial marker for the section corner and is accepted as a careful and faithful reestablishment of the original corner.

36" Pine Stump S27°30W 88.4" #5
20" Pine S70°W 85.91" Found tag #5489 and #33139 in Northerly side of tree. #8
18" Black Oak S20°E 45.00" Found nail and tag #30104 in West side of tree. #10
18" Black Oak S20°E 45.42" Found nail and tag #5489 in East side of tree. #10
14" Pine (dead) N75°W 56.22" Found nail and tag #30104 in South side of tree. #12
20" Pine N20°E 85.50" Found nail and tag #33139 in Northerly side of tree. #14

Signed by Norman L. Ochs Date September 16, 1996

Surveyor's Michigan License No. 22439

Form approved by Michigan State Board of Land Surveyors, March 1971
Revised May 14, 1975
Revised Jan., 1983

Approved by Peer Review Group On October 24, 1996

Norman L. Ochs, County Representative.

N. L. O.



A. Description (cont.)

Thomas H. Sage R.L.S. #33139
April 2, 1994 Found 5/8" Iron bent over-removed and set 1/2" Iron with cap #33139
18" Pine S70°W 85.91' #8
20" Oak S20°E 45.42' #10
8" Pine N70°E 57.70' #13
20" Pine N20°E 85.80' #14

William Tingley R.L.S. #30104
Found Iron and Cap #33139
16" Oak S40°E 45.05' #10
24" Oak N60°E 43.48' #11
12" Poplar N40°W 56.23' #15
11" Poplar S45°W 51.51' #16