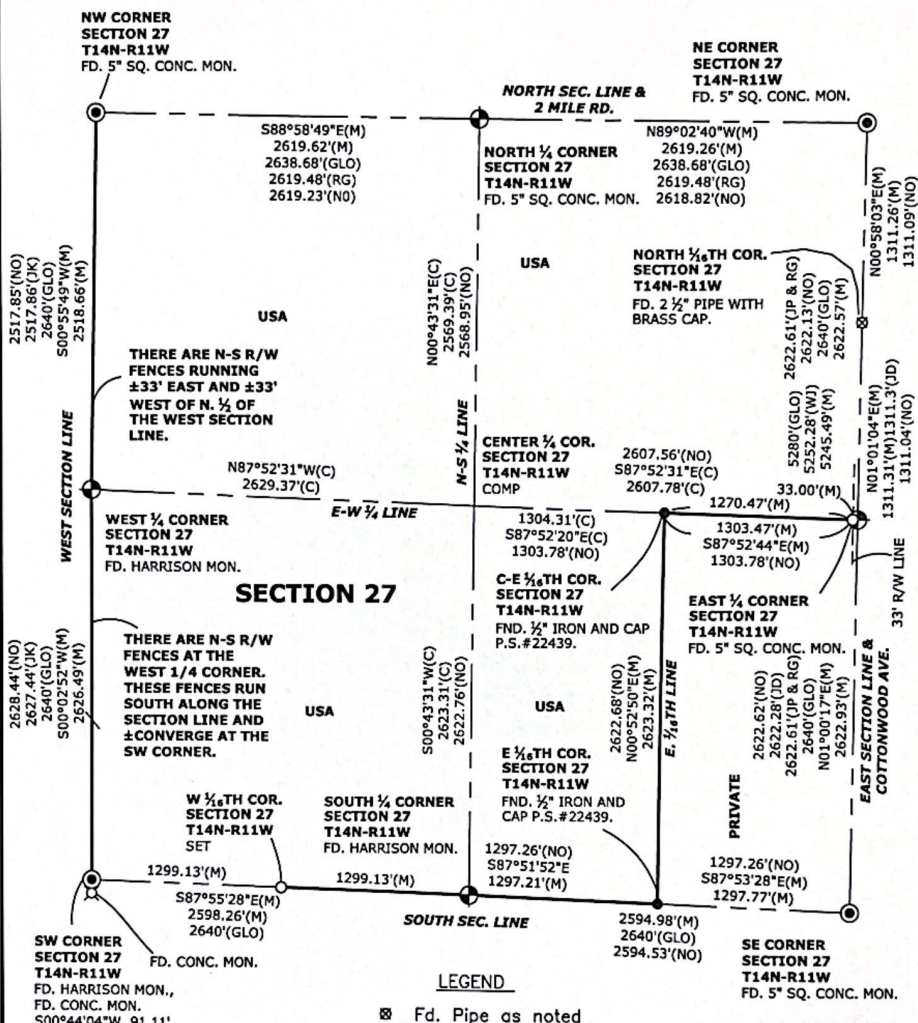


CERTIFICATE OF SURVEY



I HEREBY CERTIFY THAT I HAVE SURVEYED THE PARCEL OF LAND DESCRIBED, THAT SAID SURVEY WAS PERFORMED WITH A FIELD ERROR OF CLOSURE OF 1 IN 5000 OR GREATER, AND THAT I HAVE FULLY COMPLIED WITH THE REQUIREMENTS OF ACT #132, P.A. 1970.

Chris J. McCrimmon

Christopher J. McCrimmon, P.S. No. 47962 Dated: 1/16 2011

LCM	Surveying & Engineering LLC	CLIENT: USFS	FB/PG: SEE FILE
	1-888-223-4233 PH. 231-743-3000 Fax. 231-743-3001 223 E. MAIN ST. MARION, MI 49665	SECTION 27, T14N-R11W, GOODWELL TOWNSHIP, NEWAYGO COUNTY, MICHIGAN	JOB NO.: 10035

SHEET 1 OF 4

CERTIFICATE OF SURVEYSURVEYORS LEGEND

- (G.L.O.) = Subdivision Lines - James Mullett (1837)
 (WJ) = William Jacques (undated)
 (LS) = Lyle Shepherd (1920's - 1930's)
 (JP & RG) = Jack Pierson & Robert Griffin (1977)
 (RG) = Robert Griffin (1977)
 (JP) = Jack Pierson (1980)
 (GH) = Glen Hackbardt (1984)
 (NO) = Norm Ochs (2000, 2003)
 (JK) = James Keller (2004)
 (JD) = John Doornbos (2001)

LEGAL DESCRIPTION OF THE UNITED STATES GOVERNMENT LAND:

The Northeast $\frac{1}{4}$ AND the West $\frac{1}{2}$ of the Southeast $\frac{1}{4}$ AND the West $\frac{1}{2}$, Section 27,
 T14N-R11W, Twp. of Goodwell, Newaygo County, Michigan.

The shown measured distances are in NAD 83 Michigan Central Zone State Plane Grid in international feet. The conversion to ground distance is performed by the formula:

$$\text{GRID DISTANCE} = \text{GROUND DISTANCE}$$

COMBINED GRID FACTOR



The COMBINED FACTOR used for this project was = 1.000148704, which is an average combined factor between the NE Corner of Section 22 and the SW Corner of Section 26.
 Conversion from international feet to meters is 1 FOOT = 0.3048 METERS.

NOTES: We are reporting the coordinates for this project in MICHIGAN CENTRAL GRID, although our location is in MICHIGAN SOUTH GRID, therefore the difference between GRID and GROUND distances are larger than normal.

The STATE PLANE COORDINATES for this project were established using the MICHIGAN CORS NETWORK - NAD 83 (CORS 1996).

I HEREBY CERTIFY THAT I HAVE SURVEYED THE PARCEL OF LAND DESCRIBED, THAT SAID SURVEY WAS PERFORMED WITH A FIELD ERROR OF CLOSURE OF 1 IN 5000 OR GREATER, AND THAT I HAVE FULLY COMPLIED WITH THE REQUIREMENTS OF ACT #132, P.A. 1970.

Christopher J. McCrimmon, P.S. No. 47962 Dated: 11/5 2011

 Surveying & Engineering LLC 1-888-223-4235 PH. 231-743-3000 Fax. 231-743-3001 225 E. MAIN ST. MARION, MI 49865	DATE: 12/23/2010 DRN BY: FTW CHD BY: WES/CJM SHEET 2 OF 4	CLIENT: USFS SECTION 27, T14N-R11W, GOODWELL TOWNSHIP, NEWAYGO COUNTY, MICHIGAN	FB/PG: SEE FILE JOB NO.: 10035
			

CERTIFICATE OF SURVEY**N.E. CORNER****SECTION 27****T14N-R11W**

FD. 5" SQ. CONC. MON.
WITH BRASS CAP.
N05E - 4" SQ. PINE POST - 31.87'
N06E - 11" W. OAK - 46.02'
S38E - 13" R. OAK - 40.32'
S54W - 10" R. OAK - 67.98'
N70W - 21" R. OAK - 51.43'

EAST 1/4 CORNER**SECTION 27****T14N-R11W**

FD. 5" SQ. CONC. MON.
WITH BRASS CAP.
N51E - 8" W. OAK - 50.54'
N88E - 7" TW. OAK - 43.13'
S59W - 10" B. OAK - 26.27'
WEST - I&C #:47962 - 33.00'
WEST - 4" SQ. POST - 32.88'

S.E. CORNER**SECTION 27****T14N-R11W**

FD. 5" SQ. CONC. MON.
WITH BRASS CAP.
N02E - 12" R. OAK - 45.40'
N64E - 14" OAK - 62.99'
S28E - 22" R. OAK - 98.28'
S88W - 20" B. OAK - 30.49'

SOUTH 1/4 CORNER**SECTION 27****T14N-R11W**

FD. HARRISON MON.
N27E - 8" MAPLE - 28.51'
S47E - 8",8" TW. B. OAK - 15.89'
S11W - 6" MAPLE - 32.42'
N23W - 10" B. OAK - 36.00'

S.W. CORNER**SECTION 27****T14N-R11W**

FD. HARRISON MON.
N50E - 8" R. OAK - 25.42'
S16E - 10" R. OAK - 18.81'
S01W - FD. 4" RD. CONC. MON - 91.11'
S50W - 16" R. OAK - 5.7'
N29W - 6"-4"-6" W. OAK CLUMP - 11.08'

WEST 1/4 CORNER**SECTION 27****T14N-R11W**

FD. HARRISON MON.
NORTH - 24" W. OAK - 28.00'
S54E - 14" R. OAK - 20.52'
S42W - 12" MAPLE - 9.11'
N75W - 8" MAPLE - 27.19'

N.W. CORNER**SECTION 27****T14N-R11W**

FD. 5" SQ. CONC. MON.
WITH BRASS CAP.
N52E - P. POLE - 60.11'
S29E - 5" MAPLE - 41.18'
S0E - 12" MAPLE - 53.30'
N68W - 12" TW. MAPLE - 16.84'

NORTH 1/4 CORNER**SECTION 27****T14N-R11W**

FD. 5" SQ. CONC. MON.
WITH BRASS CAP.
NORTH - 4" SQ. POST - 1.15'
N45E - 26" W. OAK - 42.83'
S60E - 16" MAPLE - 57.90'
S20W - 16" W. OAK - 11.60'
N02W - P. POLE - 50.81'

Corner 9; The C-E 1/16th Corner of Section 27, T14N-R11W

Fd. 1/2" iron and cap, P.S. #: 22439.

N39E - found spike in E face of 6" Maple - 31.58'
S01E - set 60d nail in E face of 12" W. Oak - 49.43'
N57W - set 60d nail in NE face of 6" Maple - 36.54'
South - Carsonite Post - 1'

Corner 16; The E. 1/16th Corner on the South Line of**Section 27, T14N-R11W**

Fd. 1/2" iron and cap, P.S. #: 22439.

N17E - set 60d nail in NW face of 8" Maple - 45.18'
S26E - set 60d nail in SW face of 8" B. Oak - 37.02'
N47W - set 60d nail in SW face of 8" W. Pine - 41.12'
West - Carsonite Post - 1'

Corner 15; The W. 1/16th Corner on the South Line of Section 27,**T14N-R11W**

Set a 1/2" iron and cap at a proportionate position.

S76E - set 60d nail in SW face of 6" Maple - 33.12'
S44W - set 60d nail in N face of 8" Maple - 61.41'
N50W - set 60d nail in SW face of 12" Oak - 68.58'
East - Carsonite Post - 1'



I HEREBY CERTIFY THAT I HAVE SURVEYED THE PARCEL OF LAND DESCRIBED, THAT SAID SURVEY WAS PERFORMED WITH A FIELD ERROR OF CLOSURE "OF 1 IN 5000 OR GREATER", AND THAT I HAVE FULLY COMPLIED WITH THE REQUIREMENTS OF ACT #132, P.A. 1970.

Christopher J. McCrimmon, P.S. No. 47962

Dated: 1/18 2011



Surveying & Engineering LLC

1-888-223-4235
PH. 231-743-3000 Fax. 231-743-3001
225 E. MAIN ST. MARION, MI 49665

DATE: 12/23/2010

CLIENT: USFS

DRN BY: FTW

CHD BY: WES/CJM

SHEET 3 OF 4

SECTION 27,
T14N-R11W, GOODWELL TOWNSHIP,
NEWAYGO COUNTY, MICHIGAN

FB/PG:
SEE FILE

JOB NO.:
10035

CERTIFICATE OF SURVEY

Office

Project
27 December 2010

INPUT
Base Plane: NAD83
2102 - Michigan Control, 1st Ed
Vertical: NAVD83, 1st Ed

OUTPUT
Diagram(s): NAD83
Vertical: NAVD83, 1st Ed

N142714N11W		15	
Northing(1)	93984.9120	Latitude	43 35 02.65342
Easting(1)	19357562.7740	Longitude	85 36 08.20941
Elevation(1)	1030.033	Elevation(1)	1030.033
Convergence	-0 52 22.28808		
Scale Factor	1.000191010		
Combined Factor	1.000146929		

E142714N11W		17	
Northing(1)	97366.7780	Latitude	43 34 26.75761
Easting(1)	19357557.3380	Longitude	85 36 08.28392
Elevation(1)	1010.153	Elevation(1)	1010.153
Convergence	-0 52 22.30071		
Scale Factor	1.000193923		
Combined Factor	1.000150822		

S142714N11W		47	
Northing(1)	94744.2120	Latitude	43 34 10.85829
Easting(1)	19357491.3440	Longitude	85 36 08.36592
Elevation(1)	996.840	Elevation(1)	996.840
Convergence	-0 52 22.33963		
Scale Factor	1.000194911		
Combined Factor	1.000154413		

N 1/8TH COR - E. LINE		48	
Northing(1)	98877.8400	Latitude	43 34 49.70574
Easting(1)	19357560.6300	Longitude	85 36 08.28883
Elevation(1)	1037.618	Elevation(1)	1037.618
Convergence	-0 52 22.26886		
Scale Factor	1.000192483		
Combined Factor	1.000148035		

N142714N11W		51	
Northing(1)	100032.5960	Latitude	43 35 02.68921
Easting(1)	19354963.8760	Longitude	85 36 43.78837
Elevation(1)	1249.844	Elevation(1)	1249.844
Convergence	-0 52 47.38132		
Scale Factor	1.000191006		
Combined Factor	1.000146386		

N142714N11W		52	
Northing(1)	100079.2220	Latitude	43 35 02.70585
Easting(1)	19352244.6780	Longitude	85 37 19.37024
Elevation(1)	994.732	Elevation(1)	994.732
Convergence	-0 52 22.51769		
Scale Factor	1.000190999		
Combined Factor	1.000148613		

S142714N11W		58	
Northing(1)	94840.3050	Latitude	43 34 11.61537
Easting(1)	19354898.1450	Longitude	85 36 25.59817
Elevation(1)	1014.089	Elevation(1)	1014.089
Convergence	-0 52 47.24686		
Scale Factor	1.000196867		
Combined Factor	1.000153532		

S142714N11W		59	
Northing(1)	94934.6260	Latitude	43 34 11.94321
Easting(1)	19352301.5990	Longitude	85 37 18.87564
Elevation(1)	1034.022	Elevation(1)	1034.022
Convergence	-0 53 12.16722		
Scale Factor	1.000196786		
Combined Factor	1.000152425		

C-E 1/8TH		182	
Northing(1)	97414.8807	Latitude	43 34 37.03758
Easting(1)	19356224.7804	Longitude	85 36 25.98340
Elevation(1)	1020.767	Elevation(1)	1020.767
Convergence	-0 52 34.80375		
Scale Factor	1.000193921		
Combined Factor	1.000150284		

E 1/8TH - S. LINE		189	
Northing(1)	94794.8686	Latitude	43 34 11.13429
Easting(1)	19356194.4511	Longitude	85 36 25.98594
Elevation(1)	968.548	Elevation(1)	968.548
Convergence	-0 52 24.85555		
Scale Factor	1.000196879		
Combined Factor	1.000155741		

W 1/8TH - S. LINE		3012	
Northing(1)	94887.3560	Latitude	43 34 11.62268
Easting(1)	19353595.8720	Longitude	85 37 01.22588
Elevation(1)	1020.020	Elevation(1)	1020.020
Convergence	-0 52 36.70797		
Scale Factor	1.000196817		
Combined Factor	1.000152978		

W142714N11W		3031	
Northing(1)	97565.8310	Latitude	43 34 37.88097
Easting(1)	19352303.7900	Longitude	85 37 19.39794
Elevation(1)	1024.159	Elevation(1)	1024.159
Convergence	-0 52 22.53618		
Scale Factor	1.000193825		
Combined Factor	1.000156033		



I HEREBY CERTIFY THAT I HAVE SURVEYED THE PARCEL OF LAND DESCRIBED, THAT SAID SURVEY WAS PERFORMED WITH A FIELD ERROR OF CLOSURE *OF 1 IN 5000 OR GREATER*, AND THAT I HAVE FULLY COMPLIED WITH THE REQUIREMENTS OF ACT #132, P.A. 1970.

Christopher J. McCrimmon, P.S. No. 47962

Dated: 1/10 2011

	Surveying & Engineering LLC	DATE: 12/23/2010	CLIENT: USFS	
	1-888-223-4235	DRN BY: FTW	SECTION 27, T14N-R11W, GODDWELL TOWNSHIP, NEWAYGO COUNTY, MICHIGAN	
	PH. 231-743-3000 Fax. 231-743-3001	CHD BY: WES/CJM		FB/PG: SEE FILE
	225 E. MAIN ST. MARION, MI 49665	SHEET 4 OF 4		JOB NO.: 10035

LAND CORNER RECORDATION CERTIFICATE
Filing Requirement of Act 74, Mich. P.A. 1970

For corners in _____

<u>Newaygo</u> (County)	Located In:	Corner Code #
1. Public Land Survey	T _____ R _____	_____
	T _____ R _____	_____
	T _____ R _____	_____
	T _____ R _____	_____
2. Property Controlling in Section	S <u>27</u> T <u>14N</u> R <u>11W</u>	<u>9</u>
	S <u>27</u> T <u>14N</u> R <u>11W</u>	<u>16</u>
3. Miscellaneous Property in Sec.	S _____ T _____ R _____	_____
	S _____ T _____ R _____	_____

Register of Deeds Stamp & File
Number

4. Lot No. _____, Recorded Plat _____

5. Private Claims _____

I, Christopher J. McCrimmon, in a field survey on September 15, 20 10 do hereby state that under requirements of P.A. 74, Michigan P.A. of 1970, the corner points mentioned in lines 1 and 2 above were in conformance with regulations and rules therefore as required in the current manual of survey instructions of the United States Department of the Interior, Bureau of Land Management or by a decree of a Court of Law and /or that the corner points mentioned in lines 3, 4 and 5 above were in conformance with the rules of the Michigan Board of Land Surveyors or by a Decree of a Court of Law; established, re-established, monumented, recovered, found as expressed below:

	A	B	C	D	E	F	G	H	I	J	K	L	M
1													
2	6		5		4		3		2		1		
3													
4	7		8		9		10		11		12		
5													
6	18		17		16		15		14		13		
7													
8	15		20		21		22		23		24		
9													
10	10		25		28		27		26		25		
11													
12	11		12		13		14		15		16		
13													

NOTE: Not more than 2 corners, all in the same town and range, may be recorded on this certificate.

A. Description of original monument and accessories and/or subsequent restoration:

Corner 9; The C-E 1/16th Corner of Section 27, T14N-R11W

- I didn't find any previous history for this corner.

Corner 16; The E. 1/16th Corner on the South Line of Section 27, T14N-R11W

- I didn't find any previous history for this corner.

B. Description of corner evidence found and/or method applied in restoring or reestablishing corner:

Corner 9; The C-E 1/16th Corner of Section 27, T14N-R11W

I found a 1/2" iron and cap, P.S. #: 22439 by Norm Ochs flush with the ground. The found iron was S77°20'37"E, 0.42' from the computed position and was accepted as the position of the corner.

Corner 16; The E. 1/16th Corner on the South Line of Section 27, T14N-R11W

I found a 1/2" iron and cap, P.S. #: 22439 by Norm Ochs flush with the ground. The found iron was S45°15'10"W, 0.41' from the computed position and was accepted as the position of the corner.

C. Description of monument for corner and accessories established to perpetuate locating the position of the corner:

Corner 9; The C-E 1/16th Corner of Section 27, T14N-R11W

Fd. 1/2" iron and cap, P.S. #: 22439.
 N39E - found spike in E face of 6" Maple - 31.58'
 S01E - set 60d nail in E face of 12" W. Oak - 49.43'
 N57W - set 60d nail in NE face of 6" Maple - 36.54'
 South - Carsonite Post - 1'

Corner 16; The E. 1/16th Corner on the South Line of Section 27, T14N-R11W

Fd. 1/2" iron and cap, P.S. #: 22439.
 N17E - set 60d nail in NW face of 8" Maple - 45.18'
 S26E - set 60d nail in SW face of 8" B. Oak - 37.02'
 N47W - set 60d nail in NE face of 8" W. Pine - 41.12'
 West - Carsonite Post - 1'

Signed by Chris J. McCrimmon
 Surveyor's Michigan License No. 47962

Date 11/18/2011



FORM APPROVED BY MICHIGAN STATE BOARD OF PROFESSIONAL SURVEYORS, JAN. 28, 1971
 REVISED MAY 14, 1975
 REVISED JAN., 1983
 REVISED OCT., 1995

LAND CORNER RECORDATION CERTIFICATE
Filing Requirement of Act 74, Mich. P.A. 1970

For corners in

Newaygo Located In: _____ Corner Code # _____
 (County)

1. Public Land Survey T _____ R _____
 T _____ R _____
 T _____ R _____
 T _____ R _____

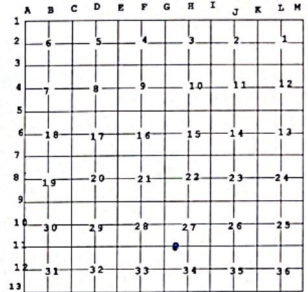
2. Property Controlling S 27 T 14N R 11W _____
 in Section S _____ T _____ R _____
 3. Miscellaneous S _____ T _____ R _____
 Property in Sec. S _____ T _____ R _____

Register of Deeds Stamp & File
 Number

4. Lot No. _____, Recorded Plat _____

5. Private Claims _____

I, Christopher J. McCrimmon, in a field survey on December 10, 20 10 do hereby state that under requirements of P.A. 74, Michigan P.A. of 1970, the corner points mentioned in lines 1 and 2 above were in conformance with regulations and rules therefore as required in the current manual of survey instructions of the United States Department of the Interior, Bureau of Land Management or by a decree of a Court of Law and /or that the corner points mentioned in lines 3, 4 and 5 above were in conformance with the rules of the Michigan Board of Land Surveyors or by a Decree of a Court of Law; established, re-established, monumented, recovered, found as expressed below:



NOTE: Not more than 2 corners, all in the same town and range, may be recorded on this certificate.

A. Description of original monument and accessories and/or subsequent restoration:

Corner 15; The W. 1/16th Corner on the South Line of Section 27, T14N-R11W

- I didn't find any previous history for this corner position.

B. Description of corner evidence found and/or method applied in restoring or reestablishing corner:

Corner 15; The W. 1/16th Corner on the South Line of Section 27, T14N-R11W

I didn't find any evidence of a corner at this position while searching with a magnetic locator. I set a 1/2" iron and cap, P.S. #:47962 flush with the ground at a proportionate position and accepted it as the position of the corner. This corner is +/- 3.5' North of E-W fence remnants.

C. Description of monument for corner and accessories established to perpetuate locating the position of the corner:

Corner 15; The W. 1/16th Corner on the South Line of Section 27, T14N-R11W

Set a 1/2" iron and cap at a proportionate position.
 S76E - set 60d nail in SW face of 6" Maple - 33.12'
 S44W - set 60d nail in N face of 8" Maple - 61.41'
 N50W - set 60d nail in SW face of 12" Oak - 68.58'
 East - Carsonite Post - 1'

Signed by Chris J. McCrimmon
 Surveyor's Michigan License No. 47962



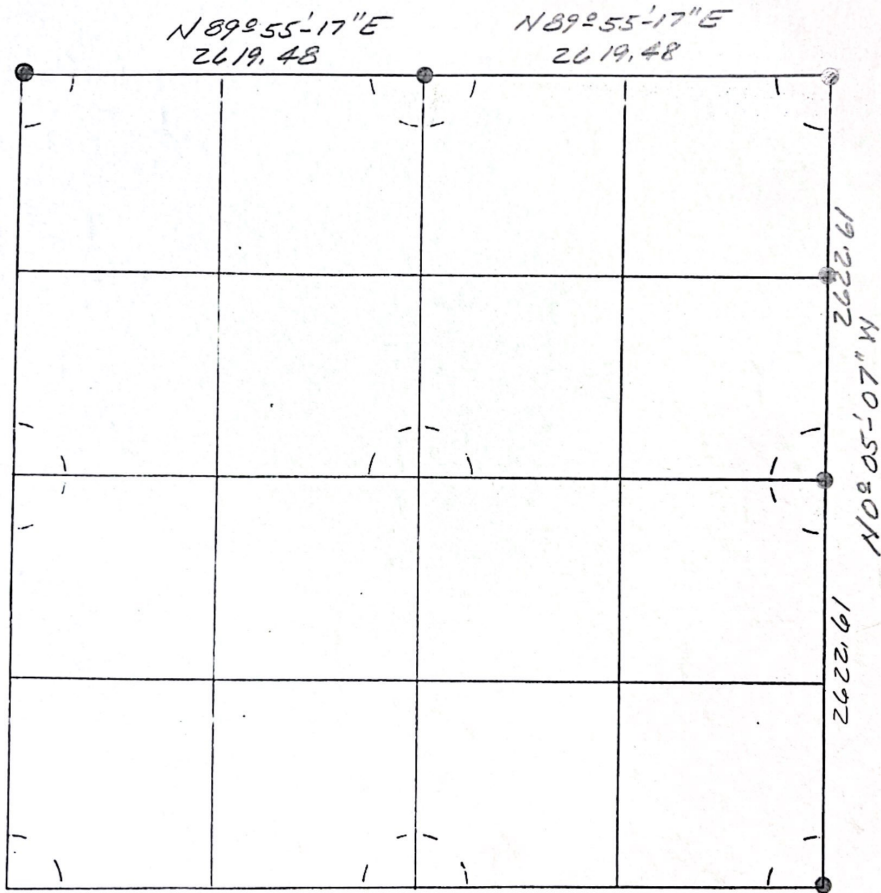
Date 1/10/2011

FORM APPROVED BY MICHIGAN STATE BOARD OF PROFESSIONAL SURVEYORS, JAN. 28, 1971
 REVISED MAY 14, 1975
 REVISED JAN., 1983
 REVISED OCT., 1995

Section 27 T 14N R 11W

Information shown is from the 1977 survey by Griffin

This copy by Griffin



● Monument (Brass Capped)
⊗ Iron or Conc. Monument



⊕ Unknown or Computed
○ _____

Section 27 T 14 N R 11 W

Information shown is from the 77 survey by RAG

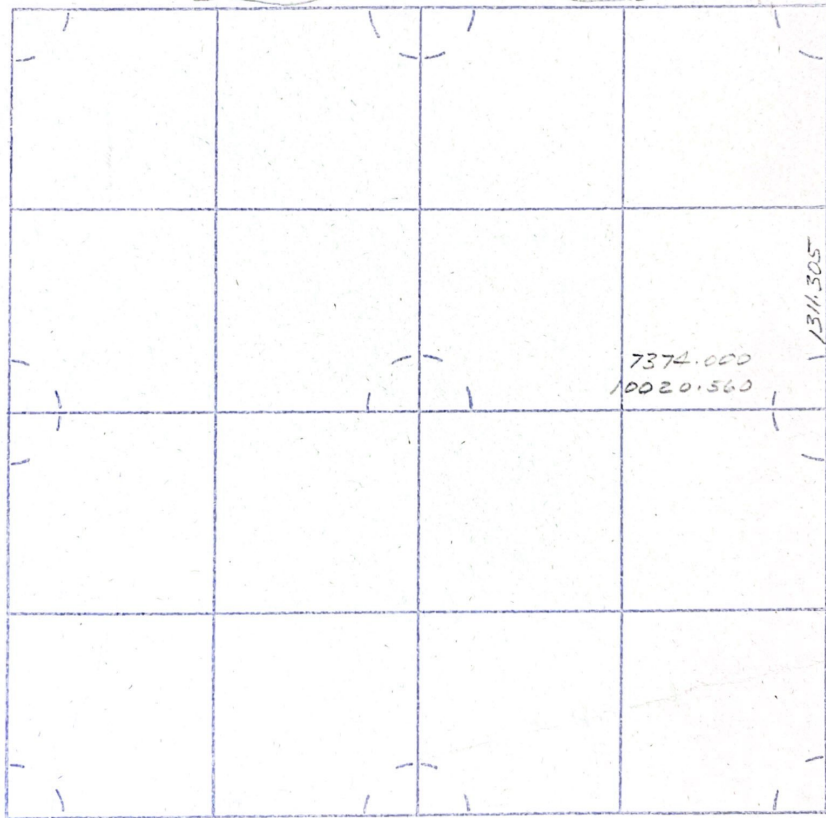
This copy by _____

9989.279
4777.715

N 89° 55' 17" E
2619.476

9992.875
7397.188

N 89° 55' 17" E 9996.471
2619.476 10016.661



2622.609

N 0° 05' 07" W

2622.609

4751.259
10024.458

- ⊗ Monument (Bress Capped)
- ⊙ Iron or Conc. Monument



- ⊕ Unknown or Computed
- _____

Sec. # 27, T. 14N. - R. 11W

Goodwell Twp., Noyes Co., Mich.

Check to see if
Griselin's Mon is
below record
before accepting
this position.

NW Cor.
F.D. 1/2" dia.
1/2" dia. disk
(238)

N89°55'07"E
2619.229'

N 1/4 Cor.
F.D. 1/2" dia.
1/2" dia. disk
#189°51'07"E
2618.821'

NE Cor.
F.D. 1/2" dia.
(231)

N0°55'15"E
2517.865'

N0°22'12"W
2568.941'

S0°05'07"E
2611.085'

W 1/4 Cor.
F.D. 1/2" dia.
Harrison Mon.
(151)

S88°58'44"E
2662.048'

S88°58'44"E
2667.555'

EVA Cor.
F.D. 1/2" dia.
1/2" dia. disk
(228)

N1°42'23"W
2718.543'

N0°22'12"W
2622.763'

S0°05'07"E
2622.614'

SW Cor.
F.D. 1/2" dia.
Cor. Mon.
(157)

S88°57'34"W
2597.245'

S 1/4 Cor.
F.D. 1/2" dia.
Harrison Mon.
(154)

N88°58'25"W
2594.528'

SE Cor.
F.D. 1/2" dia.
1/2" dia. disk
(158)

THM.
Bryce
16.03191
1 July 2003

Page 2 of 45