

CERTIFICATE OF SURVEY

SPACE RESERVED FOR REGISTER OF DEEDS

Legend

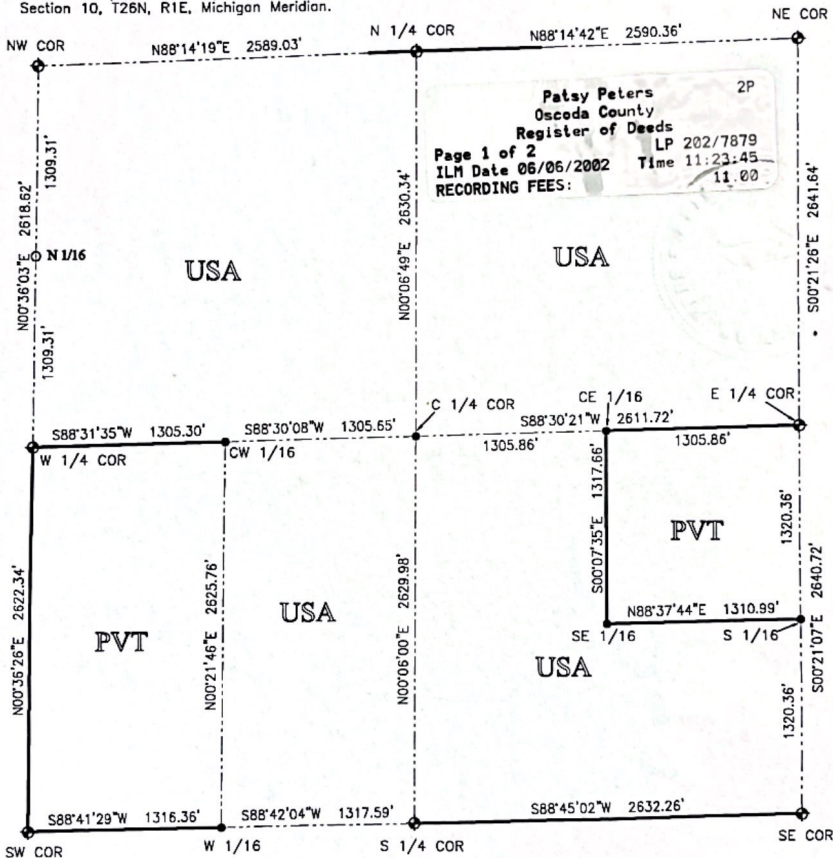
- ◆ EXISTING PLSS CORNER POSITION ACCEPTED
- PLSS CORNER POSITION MONUMENTED
- SECTION SUBDIVISIONAL CORNER SET
- SECTION SUBDIVISIONAL CORNER FOUND
- ◆ CORNER POSITION DETERMINED BUT NOT SET
- PROPERTY LINE MARKED

Scale: 1" = 800'



United States Government Land

The NE 1/4, NW 1/4, E 1/2 of the SW 1/4, W 1/2 of the SE 1/4, and SE 1/4 of the SE 1/4 of Section 10, T26N, R1E, Michigan Meridian.



THIS SURVEY SUPERCEDES THAT RECORDED IN L4, Pgs 199-204 AND CORRECTS THE POSITION OF THE NW CORNER AND N 1/16 CORNER BETWEEN SECTIONS 9 & 10.

ALTERATION OF ANY PART OF THIS DOCUMENT WITHOUT THE PERMISSION OF USDA FOREST SERVICE, IS PROHIBITED.

Sammy S. Barnett
Sammy S. Barnett
Professional Surveyor No. 16923

ERROR OF CLOSURE IS 1/9,900

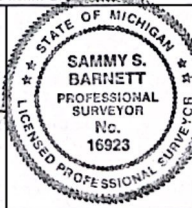
BASIS OF BEARING: ASTRONOMICAL NORTH BY SOLAR OBSERVATION.

Surveyed for:
USDA Forest Service

I, Sammy S. Barnett, a Licensed Professional Surveyor in the State of Michigan, hereby certify that I have surveyed and mapped the above parcel of land; that the ratio of closure of the unadjusted field observations was within the accepted limits and that I have fully complied with the requirements of P.A. 132 of 1970.

Barnett Surveying

P.O. Box 474
Branch, Michigan 49402
(231)-698-2234



LOCATION:	SECTION 10
	T26N, R1E,
	BIG CREEK TWP
	OSCODA COUNTY
CAW	
SSB	
DATE	5/22/02
SHEET	1 of 2

CORNER WITNESSES

NW COR SEC 10, T26N, R1E
 1/2" REROD W/CAP #10696
 S47E 8" B.OAK 18.78'
 S19W 9" J.PINE 14.78'
 S48W 8" B.OAK 36.89'
 N26W 14" B.OAK 35.03'
 WEST GLO MON (WC) 33.00'

WIT COR TO NW COR
 GLO CONC MON W/BRASS CAP
 S76E 8" B.OAK 48.50'
 S14E 8" B.OAK 23.05'
 EAST 1/2" REROD W/CAP #10696 33.00'

W 1/4 COR SEC 10, T26N, R1E 1/15/10 C. WAITE L. MARTIN
 GLO CONC MON W/BRASS CAP ✓
 N27E 16" R.PINE 72.70' 22"
 S56E POWER POLE 74.48' ✓
 N12W 8" R.PINE 15.16' 9"

SW COR SEC 10, T26N, R1E
 GLO CONC MON W/BRASS CAP
 N25E 16" CEDAR 15.7'
 S22E 14" CEDAR 8.7'
 WEST BAR & CAP #12018 66.00'
 N12W 8" CEDAR 19.2'

S 1/4 COR SEC 10, T26N, R1E
 GLO CONC MON W/BRASS CAP
 N76E 6" J.PINE 52.90'
 S18E 6" TAMARACK 10.30'
 N64W 8" J.PINE 57.20'
 EAST CARSONITE POST 1'

SE COR SEC 10, T26N, R1E 1/15/10 C. WAITE L. MARTIN
 GLO CONC MON W/BRASS CAP UNDER ICE
 N70E 6" W.PINE 51.34' LYING DOWN (REMAN)
 ✓ EAST CEDAR POST 33.07'
 N89W 8" W.PINE 21.84' STUMP (REMAN)
 ✓ N53W 8" W.PINE 20.86'

E 1/4 COR SEC 10, T26N, R1E
 GLO CONC MON W/BRASS CAP
 N02E 16" J.PINE 58.75'
 N44E POWER POLE 55.16'
 S58E 8" J.PINE 76.98'
 WEST CEDAR POST 1.3' POOR
 S21W 4" R.PINE 117.15'

NE COR SEC 10, T26N, R1E
 GLO CONC MON W/BRASS CAP
 N30E 12" J.PINE 39.81'
 S25E 12" J.PINE 35.72'
 N51E POWER POLE 59.29'
 N05W 12" J.PINE 30.60'

N 1/4 COR SEC 10, T26N, R1E
 GLO CONC MON W/BRASS CAP
 N10E 10" OAK 15.75'
 S10W 10" R.PINE 28.15'
 N70W 9" J.PINE 11.15'
 EAST CARSONITE POST 1'

N 1/16 COR BETWEEN SEC 9 & 10
 1/2" REROD W/CAP #16923
 N23E 16" R.PINE 47.97'
 S72E 7" R.PINE 45.78'
 S64E 10" J.PINE 41.20'
 N72W 13" R.PINE 97.41'

C 1/4 COR SEC 10, T26N, R1E
 4" CONC MON
 S24E 12" J.PINE 15.05'
 S54W 8" J.PINE 101.38'
 N35W POWER POLE 78.46'

SW 1/16 COR SEC 10 1/15/10 C. WAITE L. MARTIN
 1/2" REROD W/CAP #12018 ✓
 S24E 20" R.PINE 100.00' 25"
 S60E 6" J.PINE 28.15' 8" STUMP
 WEST B/C #12018 66.00' ✓
 SOUTH CARSONITE POST 0.4'

W 1/16 COR BETWEEN SEC 10 & 15 1/15/10 C. WAITE L. MARTIN
 1/2" PIPE ✓
 N40E 8" ASPEN 20.75' DEAD/DOWN
 S80E 9" BIRCH 30.2' DEAD/DOWN
 S77W 12" BIRCH 48.90' (30.55'?) SNAG
 WEST CARSONITE POST 0.65'

CE 1/16 COR SEC 10
 1/2" REROD W/CAP #16923
 S37E 6" J.PINE 9.20'
 S22W 6" J.PINE 10.39'
 N13W 10" J.PINE 70.60'

SE 1/16 COR SEC 10
 1/2" REROD W/CAP #16923
 N60E 15" R.PINE 32.10'
 S54W 14" J.PINE 72.10'
 N88W 8" CHERRY 34.40'

S 1/16 COR BETWEEN SEC 10 & 11
 1/2" REROD W/CAP #16923
 N54E 8" J.PINE 66.10'
 S65E 7" ASPEN 60.95' POLE
 S85W 7" W.PINE 34.40'
 S62E 5" W. PINE 88.98'

ALTERATION OF ANY PART OF THIS DOCUMENT WITHOUT THE
 PERMISSION OF USDA FOREST SERVICE, IS PROHIBITED.

Sammy S. Barnett
 Sammy S. Barnett
 Professional Surveyor No. 16923

Surveyed for:
 USDA Forest Service

I, Sammy S. Barnett, a Licensed Professional Surveyor in
 the State of Michigan, hereby certify that I have
 surveyed and mapped the above parcel of land; that
 the ratio of closure of the unadjusted field observations
 was within the accepted limits and that I have fully
 complied with the requirements of P.A. 132 of 1970.

Barnett Surveying

P.O. Box 474
 Branch, Michigan 49402
 (231)-898-2234



LOCATION:
 SECTION 10
 T26N, R1E,
 BIG CREEK TWP
 OSCODA COUNTY
 BY: CAW
 SSB
 DATE 5/21/02
 SHEET 2 OF 2

*Carol Waite updated wit 4/30/2003
 Terry Kozul*

LAND CORNER RECORDATION CERTIFICATE
Filing Requirement of Act 74, Mich. P.A. 1970

For corners in

OSCODA
(County)

Located In:

Corner Code #

1. Public Land Survey

T _____ R _____
T _____ R _____
T _____ R _____
T _____ R _____

2. Property Controlling
in Section

S 10 T 26N R 1E

3

3. Miscellaneous
Property in Sec.

S _____ T _____ R _____
S _____ T _____ R _____

4. Lot No. _____, Recorded Plat _____

5. Private Claims _____

Register of Deeds Stamp & File Number

I, Carol A. Waite, in a field survey on December 4, 2001 do hereby state that under requirements of P.A. 74, Michigan P.A. of 1970, the corner points mentioned in lines 1 and 2 above were in conformance with regulations and rules therefore as required in the current manual of survey instructions of the United States Department of the Interior, Bureau of Land Management or by a decree of a Court of Law and /or that the corner points mentioned in lines 3, 4 and 5 above were in conformance with the rules of the Michigan Board of Land Surveyors or by a Decree of a Court of Law; established, re-established, monumented, recovered, found as expressed below:

NOTE: Not more than 2 corners, all in the same town and range, may be recorded on this certificate.

A. Description of original monument and accessories and/or subsequent restoration:

3; N 1/16 CORNER BETWEEN SECTIONS 9 & 10

1987 - Sammy S. Barnett, set 1/2" rebar w/cap #16923 at single proportionate position between W 1/4 corner and NW corner Section 10.

Witnessed by: 1) R.Pine 6" N81°E 61.80', 2) R.Pine 12" N71°W 81.60', 3) R.Pine 14" N40°E 56.45'

B. Description of corner evidence found and/or method applied in restoring or reestablishing corner:

3; N 1/16 CORNER BETWEEN SECTIONS 9 & 10

Found Barnett bar and cap 16.6' West of proper position due to Barnett using the GLO Witness Corner monument as the NW corner of Section 10. Witness corner is 33' West of the actual section corner position. At the request of Sam Barnett I moved the 1/2" rerod w/cap #16923 to the proper position mid-way and on line between the section and 1/4 corners.

C. Description of monument for corner and accessories established to perpetuate locating the position of the corner:

3; N 1/16 CORNER BETWEEN SECTIONS 9 & 10

1/2" rerod w/cap #16923

N23°E Fd 60d Nail in S Face 16" R.Pine 47.97'

S72°E Fd 60d Nail in N Face 7" Dead R.Pine 45.78'

S64°E Set 60d Nail in NE Face 10" J.Pine 41.20'

N72°W Fd 10" Spk in S Face 13" R.Pine 97.41'



Signed by

Carol A. Waite

Date

5/22/02

Surveyor's Michigan License No. 43074

FORM APPROVED BY MICHIGAN STATE BOARD OF PROFESSIONAL SURVEYORS, JAN. 28, 1971
REVISED MAY 14, 1975
REVISED JAN. 1983
REVISED OCT., 1995

LAND CORNER RECORDATION CERTIFICATE
Filing Requirement of Act 74, Mich. P.A. 1970

For corners in

OSCODA
 (County)

Located In:

Corner Code #

1. Public Land Survey

T 26N R 1E

G-3

T 26N R 1E

G-3 WC

T R

T R

S T R

S T R

2. Property Controlling
 in Section

3. Miscellaneous
 Property in Sec.

S T R

S T R

4. Lot No. _____, Recorded Plat _____

5. Private Claims _____

Register of Deeds Stamp & File Number

I, Carol A. Waite, in a field survey on December 4, 2001 do hereby state that under requirements of P.A. 74, Michigan P.A. of 1970, the corner points mentioned in lines 1 and 2 above were in conformance with regulations and rules therefore as required in the current manual of survey instructions of the United States Department of the Interior, Bureau of Land Management or by a decree of a Court of Law and for that the corner points mentioned in lines 3, 4 and 5 above were in conformance with the rules of the Michigan Board of Land Surveyors or by a Decree of a Court of Law, established, re-established, monumented, recovered, found as expressed below:

NOTE: Not more than 2 corners, all in the same town and range, may be recorded on this certificate.

A. Description of original monument and accessories and/or subsequent restoration:

G-3; CORNER COMMON TO SECTIONS 3, 4, 9, & 10

1937 - GLO Dependent Resurvey by Guy R. Veal, set a block of concrete 8" long, 6" diameter, 24" in the ground, in winding road which bears N and S, for deposit to corner mark. Witness corner set S89°33'W, 50 links.

1979 - Edwin J. McCombs, set rood on West edge of trail, 33' East of found GLO Witness Corner. Witnessed by:

1) 10" Jack Pine S85°E 31.75', 2) 15" Oak N20°W 34.77', 3) 8" Jack Pine S25°W 14.67'.

1987 - Sammy S. Barnett, found 6" concrete monument w/brass cap, no existing witnesses. Took the following witnesses:

4) Oak 8" S76°E 48.50', 5) Oak 9" N05°W 24.75', 6) Oak 7" S14°E 23.05'. Note: This is actually the witness corner, which is erroneously identified by Barnett as the section corner.

G-3 WC; WITNESS CORNER TO CORNER COMMON TO SECTIONS 3, 4, 9, & 10

1937 - GLO Dependent Resurvey by Guy R. Veal, S89°33'W, 50 links from the section corner, set a concrete monument 24" long, 6" diameter, w/ brass cap, 18" in the ground for witness corner. This monument witnesses by: 1) Jack Pine 6" N22 1/2°E 99 lks,

2) Black Oak 6" S62 1/2°E 221 lks, 3) Jack Pine 6" S16°W 183 lks, 4) Jack Pine 8" N66 1/2°W 205 lks.

1979 - Edwin J. McCombs, found GLO Witness Corner, no witnesses stated.

B. Description of corner evidence found and/or method applied in restoring or reestablishing corner:

G-3; CORNER COMMON TO SECTIONS 3, 4, 9, & 10

Found 1/2" rood with cap #10696 1' West of the West edge of a N-S trail road and 33' East of the GLO witness corner monument.

G-3 WC; WITNESS CORNER TO CORNER COMMON TO SECTIONS 3, 4, 9, & 10

Found GLO concrete monument w/brass cap in good condition.

C. Description of monument for corner and accessories established to perpetuate locating the position of the corner:

G-3; CORNER COMMON TO SECTIONS 3, 4, 9, & 10

1/2" rood with cap #10696

S47°E Fd 60d Nail in E Face 8" B.Oak 18.78'

S19°W Set 60d Nail in SE Face 9" J.Pine 14.78'

S48°W Fd 60d Nail in N Face 8" B.Oak 36.89'

N26°W Set 60d Nail in W Face 14" B.Oak 35.03'

West GLO concrete monument w/brass cap 33.00'

G-3 WC; WITNESS COR TO COR COMMON TO SECTIONS 3, 4, 9, & 10

GLO concrete monument w/brass cap

S76°E Fd 60d Nail in E Face 8" B.Oak 48.50'

S14°E Fd 60d Nail in N Face 8" B.Oak 23.05'

East 1/2" rood with cap #10696 33.00'



Signed by

Carol A. Waite

Date

5/22/02

Surveyor's Michigan License No. 43074

FORM APPROVED BY MICHIGAN STATE BOARD OF PROFESSIONAL SURVEYORS, JAN. 26, 1971
 REVISED MAY 14, 1975
 REVISED JAN. 1983
 REVISED OCT. 1995

LAND CORNER RECORDATION CERTIFICATE

FILING REQUIREMENT OF ACT 74, MICH. P.A.1970

FOR CORNERS OF--	LOCATED IN--	CORNER CODE NUMBER
1. PUBLIC LAND SURVEY _____ T. 26 ^{N.} X R. 1 ^{E.} X		H-5
2. PROPERTY CONTROLLING IN SECTION _____ T. _____ S. R. _____ E. W.		
3. MISCELLANEOUS PROPERTY IN SECTION _____ T. _____ S. R. _____ E. W.		
4. LOT NO. _____, RECORDED PLAT _____		
5. PRIVATE CLAIMS _____		

REGISTER OF DEEDS STAMP AND
FILING NUMBER

I, Sammy Barnett / Kevin Pritchard, do hereby certify that under requirements of P.A. 74, Michigan P.A. of 1970, the corner points mentioned in lines 1 and 2 above were, in a field survey on August, 19 87, established, re-established, monumented, re-monumented, recovered or restored as expressed below and in conformance with regulations and rules therefore as required in the current manual of survey instructions of the United States Department of the Interior, Bureau of Land Management or by a decree of a court of law. Furthermore, that the corner points mentioned in lines 3, 4 and 5 above were, in a field survey on _____, 19____, found, recovered, restored, established or re-established as expressed below and in conformance with the rules of the Michigan State Board of Registration for Land Surveyors or, by a Decree of a Court of law:

A. Description of original monument and accessories and/or subsequent restoration:

H-5 Quarter corner common to sections 10 and 15, T26N, R1E

H-5 1937 Dependent Resurvey set a 6" diam x 24" long conc. monu. w/brass cap.

H-5 Witnesses

White Pine 12" S13 $\frac{1}{2}$ E 34 lks

Poplar 6" N6W 30 lks

B. Description of corner evidence found and/or method applied in restoring or re-establishing corner:

H-5 Found 6" conc. monu. w/brass cap.

No existing witnesses.

C. Description of monument for corner and accessories established to perpetuate locating the position of the corner:

H-5 Took the following witnesses to the existing conc. monu.

Placed a 60d spike in the side of, blazed and scribed the face of and painted the following

H-5 Jack Pine 4" N76°E 52.90'

Tamarack 4" S18°E 10.30'

Jack Pine 7" N64°W 57.20'

Carsonite East 1'

SIGNED BY Sammy Barnett DATE 9/14/87

SURVEYOR'S MICHIGAN REGISTRATION NO. 16923

FOR STATE AND UNITED STATES AGENCIES:

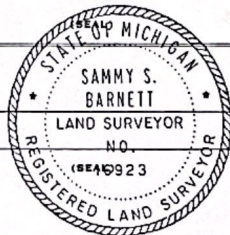
SIGNED BY _____ DATE _____

CHIEF OF SURVEY PARTY

APPROVED AND SIGNED BY _____ DATE _____

MICHIGAN REGISTERED LAND SURVEYOR

SURVEYOR'S MICHIGAN REGISTRATION NO. _____



FORM APPROVED BY MICHIGAN STATE BOARD OF REGISTRATION, JAN. 28, 1971
REVISED MAY 14, 1975

MAY PLACE SKETCH ON BACK OR ATTACHED SHEET

LAND CORNER RECORDATION CERTIFICATE

FILING REQUIREMENT OF ACT 74, MICH. P.A.1970

FOR CORNERS OF:-	LOCATED IN:-	CORNER CODE NUMBER
1. PUBLIC LAND SURVEY_____ T. 26 N. 2 R. 1 W E.		H-3
2. PROPERTY CONTROLLING IN SECTION_____ T. _____ N. S. R. _____ E. W.		
3. MISCELLANEOUS PROPERTY IN SECTION_____ T. _____ N. S. R. _____ E. W.		
4. LOT NO. _____, RECORDED PLAT _____		
5. PRIVATE CLAIMS _____		

REGISTER OF DEEDS STAMP AND FILING NUMBER

I, Sammy Barnett / Kevin Pritchard, do hereby certify that under requirements of P.A. 74, Michigan P.A. of 1970, the corner points mentioned in lines 1 and 2 above were, in a field survey on August, 1987, established, re-established, monumented, re-monumented, recovered or restored as expressed below and in conformance with regulations and rules therefore as required in the current manual of survey instructions of the United States Department of the Interior, Bureau of Land Management or by a decree of a court of law. Furthermore, that the corner points mentioned in lines 3, 4 and 5 above were, in a field survey on _____, 19____, found, recovered, restored, established or re-established as expressed below and in conformance with the rules of the Michigan State Board of Registration for Land Surveyors or, by a Decree of a Court of law:

A. Description of original monument and accessories and/or subsequent restoration:

H-3 Quarter corner common to Sections 3 and 10, T26N, R1E

H-3 1937 Dependent Resurvey set a 6" diam. x 24 " long conc. monu. w/brass cap

H-3 Witnesses

Jack Pine 8" S60 $\frac{1}{2}$ W 58 lks
Jack Pine 8" N64 $\frac{3}{4}$ W 96 lks
Iron Pipe North 35 lks

B. Description of corner evidence found and/or method applied in restoring or re-establishing corner:

H-3 Found 6" conc. monu. w/brass cap
No existing witnesses

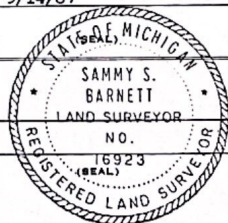
C. Description of monument for corner and accessories established to perpetuate locating the position of the corner:

H-3 Took the following witnesses to the existing conc. monu.

Placed a 60d spike in the side of, blazed and scribed the face of and painted the following

H-3 Jack pine 8" N70°W 11/15'
Oak 9" N10°E 15.75'
R. Pine 9" S10°W 28.15'
Carsonite East 1'

SIGNED BY Sammy Barnett DATE 9/14/87
SURVEYOR'S MICHIGAN REGISTRATION NO. 16923
FOR STATE AND UNITED STATES AGENCIES:
SIGNED BY _____ DATE _____
APPROVED AND SIGNED BY _____ DATE _____
CHIEF OF SURVEY PARTY
MICHIGAN REGISTERED LAND SURVEYOR



SURVEYOR'S MICHIGAN REGISTRATION NO. _____

FORM APPROVED BY MICHIGAN STATE BOARD OF REGISTRATION, JAN. 28, 1971
REVISED MAY 14, 1975

MAY PLACE SKETCH ON BACK OR ATTACHED SHEET

LAND CORNER RECORDATION CERTIFICATE

FILING REQUIREMENT OF ACT 74, MICH. P.A.1970

FOR CORNERS OF:-	LOCATED IN:-	CORNER CODE NUMBER
1. PUBLIC LAND SURVEY _____	T. <u>26</u> XX N. <u>1</u> XX E. <u>1</u> XX	<u>H-4</u>
2. PROPERTY CONTROLLING IN SECTION _____	T. _____ N. _____ E. _____ S. _____ R. _____ W. _____	_____
3. MISCELLANEOUS PROPERTY IN SECTION _____	T. _____ N. _____ E. _____ S. _____ R. _____ W. _____	_____
4. LOT NO. _____, RECORDED PLAT _____		
5. PRIVATE CLAIMS _____		

REGISTER OF DEEDS STAMP AND
FILING NUMBER

I, Sammy Barnett / Kevin Pritchard, do hereby certify that under requirements of P.A. 74, Michigan P.A. of 1970, the corner points mentioned in lines 1 and 2 above were, in a field survey on August, 19 87, established, re-established, monumented, re-monumented, recovered or restored as expressed below and in conformance with regulations and rules therefore as required in the current manual of survey instructions of the United States Department of the Interior, Bureau of Land Management or by a decree of a court of law. Furthermore, that the corner points mentioned in lines 3, 4 and 5 above were, in a field survey on _____, 19____, found, recovered, restored, established or re-established as expressed below and in conformance with the rules of the Michigan State Board of Registration for Land Surveyors or, by a Decree of a Court of law:

A. Description of original monument and accessories and/or subsequent restoration:

H-4 Center quarter corner to section 10, T26N, R1E
Not set in original or dependent resurvey

H-4 1973 survey by Caldwell set a conc. plat monu.

Witnesses

N. Pine 3" S35E 57.3'

J. Pine 12" S20E 15.0'

Oak 10" South 47.9'

Pipe line West 60.0'

B. Description of corner evidence found and/or method applied in restoring or re-establishing corner:

H-4 Found conc. plat monu.

J. Pine 12" S24°E 15.05' Caldwell witness

C. Description of monument for corner and accessories established to perpetuate locating the position of the corner:

H-4 Took the following witnesses to the existing conc. plat monu.

Placed a 60d spike in the side of, blazed and scribed the face of and painted the following

H-4 J. Pine 12" S24°E 15.05' Caldwell witness

J. Pine 6" S54°W 101.38'

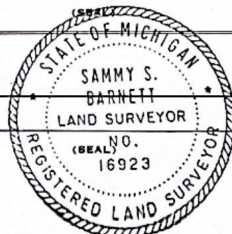
Power Pole N35°W 78.46'

SIGNED BY Sammy Barnett DATE 9/14/87
Sammy Barnett
SURVEYOR'S MICHIGAN REGISTRATION NO. 16923

FOR STATE AND UNITED STATES AGENCIES:

SIGNED BY _____ DATE _____
CHIEF OF SURVEY PARTY
APPROVED AND SIGNED BY _____ DATE _____
MICHIGAN REGISTERED LAND SURVEYOR

SURVEYOR'S MICHIGAN REGISTRATION NO. _____



FORM APPROVED BY MICHIGAN STATE BOARD OF REGISTRATION, JAN. 28, 1971
REVISED MAY 14, 1975

MAY PLACE SKETCH ON BACK OR ATTACHED SHEET

LAND CORNER RECORDATION CERTIFICATE

FILING REQUIREMENT OF ACT 74, MICH. P.A.1970

FOR CORNERS OF:-	LOCATED IN:-	CORNER CODE NUMBER
1. PUBLIC LAND SURVEY _____ T. _____ N. _____ S. _____ R. _____ E. _____ W. _____		
2. PROPERTY CONTROLLING IN SECTION <u>10</u> , T. <u>26</u> N. <u>XX</u> R. <u>1</u> E. <u>XX</u>		<u>9</u>
3. MISCELLANEOUS PROPERTY IN SECTION _____ T. _____ N. _____ S. _____ R. _____ E. _____ W. _____		
4. LOT NO. _____ , RECORDED PLAT _____		
5. PRIVATE CLAIMS _____		

REGISTER OF DEEDS STAMP AND
FILING NUMBER

I, Sammy Barnett / Kevin Fritchard, do hereby certify that under requirements of P.A. 74, Michigan P.A. of 1970, the corner points mentioned in lines 1 and 2 above were, in a field survey on August, 19 87, established, re-established, monumented, re-monumented, recovered or restored as expressed below and in conformance with regulations and rules therefore as required in the current manual of survey instructions of the United States Department of the Interior, Bureau of Land Management or by a decree of a court of law. Furthermore, that the corner points mentioned in lines 3, 4 and 5 above were, in a field survey on _____, 19____, found, recovered, restored, established or re-established as expressed below and in conformance with the rules of the Michigan State Board of Registration for Land Surveyors or, by a Decree of a Court of law:

A. Description of original monument and accessories and/or subsequent restoration:

- 9 Centereast 1/16 corner to section 10
- 9 Not set in original or dependent resurvey

B. Description of corner evidence found and/or method applied in restoring or re-establishing corner:

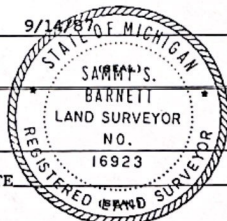
- 9 No evidence of corner position found
- 9 Corner position established at the single proportionate position between the East quarter corner and the center quarter corners of section 10.

C. Description of monument for corner and accessories established to perpetuate locating the position of the corner:

- 9 Set a 1/2" x 18" rebar with a plastic cap RLS # 16923
- 9 Placed a 60d spike in the side of, blazed and scribed the face of and painted the following.
 J. Pine 4" S37°E 9.20'
 J. Pine 5" S22°W 10.35'
 J. Pine 10" N13°W 70.60'
 Carsonite South 0.3'

Carol Wake
Terry Kossal
Updated with 4/30/03

SIGNED BY Sammy Barnett DATE 9/14/87
 SURVEYOR'S MICHIGAN REGISTRATION NO. 16923
 FOR STATE AND UNITED STATES AGENCIES:
 SIGNED BY _____ DATE _____
CHIEF OF SURVEY PARTY
 APPROVED AND SIGNED BY _____ DATE _____
MICHIGAN REGISTERED LAND SURVEYOR



SURVEYOR'S MICHIGAN REGISTRATION NO. _____

FORM APPROVED BY MICHIGAN STATE BOARD OF REGISTRATION, JAN. 28, 1971
REVISED MAY 14, 1975

MAY PLACE SKETCH ON BACK OR ATTACHED SHEET

LAND CORNER RECORDATION CERTIFICATE

FILING REQUIREMENT OF ACT 74, MICH. P.A. 1970

FOR CORNERS OF:-	LOCATED IN:-	CORNER CODE NUMBER
1. PUBLIC LAND SURVEY _____ T. _____ N. _____ S. _____ R. _____ E. _____ W. _____		
2. PROPERTY CONTROLLING IN SECTION <u>10</u> , T. <u>26</u> N. <u>1</u> S. <u>1</u> R. <u>1</u> E. <u>1</u> W. <u>1</u>		<u>13</u>
3. MISCELLANEOUS PROPERTY IN SECTION _____ T. _____ N. _____ S. _____ R. _____ E. _____ W. _____		
4. LOT NO. _____, RECORDED PLAT _____		
5. PRIVATE CLAIMS _____		

REGISTER OF DEEDS STAMP AND
FILING NUMBER

I, Sammy Barnett / Kevin Pritchard, do hereby certify that under requirements of P.A. 74, Michigan P.A. of 1970, the corner points mentioned in lines 1 and 2 above were, in a field survey on August, 19 87, established, re-established, monumented, re-monumented, recovered or restored as expressed below and in conformance with regulations and rules therefore as required in the current manual of survey instructions of the United States Department of the Interior, Bureau of Land Management or by a decree of a court of law. Furthermore, that the corner points mentioned in lines 3, 4 and 5 above were, in a field survey on _____, 19____, found, recovered, restored, established or re-established as expressed below and in conformance with the rules of the Michigan State Board of Registration for Land Surveyors or, by a Decree of a Court of law:

A. Description of original monument and accessories and/or subsequent restoration:

13 Southeast 1/6 corner to section 10, T26N, R1E.

13 Not set in original or dependent resurvey.

B. Description of corner evidence found and/or method applied in restoring or re-establishing corner:

13 No evidence of corner position found

13 Corner position established at the intersection of lines connecting opposite 1/16 corners in the Southeast quarter of section 10.

C. Description of monument for corner and accessories established to perpetuate locating the position of the corner:

13 Set a 1/2" x 18" rebar with a plastic cap RLS # 16923.

13 Placed a 60d spike in the side of, blazed and scribed the face of and painted the following

13 J. Pine ¹⁴ 10" S54°W 72.10'
 " W. Cherry N88°W 34.40' 7"
 R. Pine ⁷³ 13" N60°E 32.10'
 Carsonite North 1'

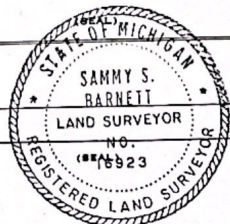
*Carol Wade
 Terry Kessal
 updated with 4/30/2003*

SIGNED BY Sammy Barnett DATE 9/14/87
 SURVEYOR'S MICHIGAN REGISTRATION NO. 16923

FOR STATE AND UNITED STATES AGENCIES:

SIGNED BY _____ DATE _____
 CHIEF OF SURVEY PARTY
 APPROVED AND SIGNED BY _____ DATE _____
 MICHIGAN REGISTERED LAND SURVEYOR

SURVEYOR'S MICHIGAN REGISTRATION NO. _____



FORM APPROVED BY MICHIGAN STATE BOARD OF REGISTRATION, JAN. 28, 1971
 REVISED MAY 14, 1975

SEE SKETCH ON BACK OR ATTACHED SHEET

LAND CORNER RECORDATION CERTIFICATE

FILING REQUIREMENT OF ACT 74, MICH. P.A.1970

FOR CORNERS OF:-	LOCATED IN:-	CORNER CODE NUMBER
1. PUBLIC LAND SURVEY _____ T. _____ S., R. _____ E. _____ W. _____		
2. PROPERTY CONTROLLING IN SECTION <u>10</u> , T. <u>26</u> N. <u>XX</u> R. <u>1</u> E. <u>XX</u> W. _____		<u>14</u>
3. MISCELLANEOUS PROPERTY IN SECTION _____, T. _____ S., R. _____ E. _____ W. _____		
4. LOT NO. _____, RECORDED PLAT _____		
5. PRIVATE CLAIMS _____		

REGISTER OF DEEDS STAMP AND
FILING NUMBER

I, Sammy Barnett / Kevin Pritchard, do hereby certify that under requirements of P.A. 74, Michigan P.A. of 1970, the corner points mentioned in lines 1 and 2 above were, in a field survey on August, 19 87, established, re-established, monumented, re-monumented, recovered or restored as expressed below and in conformance with regulations and rules therefore as required in the current manual of survey instructions of the United States Department of the Interior, Bureau of Land Management or by a decree of a court of law. Furthermore, that the corner points mentioned in lines 3, 4 and 5 above were, in a field survey on _____, 19____, found, recovered, restored, established or re-established as expressed below and in conformance with the rules of the Michigan State Board of Registration for Land Surveyors or, by a Decree of a Court of law:

A. Description of original monument and accessories and/or subsequent restoration:

- 14 South 1/16 corner on the East line of section 10, T26N, R1E.

Not set in original or dependent resurvey

B. Description of corner evidence found and/or method applied in restoring or re-establishing corner:

- 14 No evidence of corner position found.
- 14 Corner position established at the single proportionate position between the East quarter corner and the Southeast corner of section 10.

C. Description of monument for corner and accessories established to perpetuate locating the position of the corner:

- 14 Set a 1/2" x 18" rebar with a plastic cap RLS # 16923
- 14 Placed a 60d spike in the side of, blazed and scribed the face of and painted the following
- J. Pine 7" N54°E 66.10'
- Aspen 6" S65°E 60.95' *gone*
- W. Pine 7/4" S85°W 34.40'
- ADDED
S62E 5"W.PINE 88.98'

*Carol White
Terry Ressel
Updated W.P. 4/30/07*

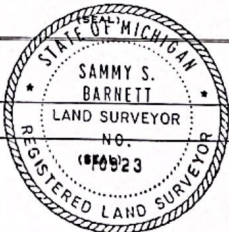
SIGNED BY Sammy Barnett DATE 9/14/87
 SURVEYOR'S MICHIGAN REGISTRATION NO. 16923

FOR STATE AND UNITED STATES AGENCIES:

SIGNED BY _____ DATE _____
CHIEF OF SURVEY PARTY

APPROVED AND SIGNED BY _____ DATE _____
MICHIGAN REGISTERED LAND SURVEYOR

SURVEYOR'S MICHIGAN REGISTRATION NO. _____



FORM APPROVED BY MICHIGAN STATE BOARD OF REGISTRATION, JAN. 28, 1971
REVISED MAY 14, 1978

LAND CORNER RECORDATION CERTIFICATE

FILING REQUIREMENT OF ACT 74, MICH. P.A.1970

FOR CORNERS OF--	LOCATED IN--	CORNER CODE NUMBER
1. PUBLIC LAND SURVEY _____	T. <u>26</u> N. <u>3</u> E. <u>10</u>	<u>G-4</u>
2. PROPERTY CONTROLLING IN SECTION _____	T. _____ S. _____ R. _____	_____
3. MISCELLANEOUS PROPERTY IN SECTION _____	T. _____ S. _____ R. _____	_____
4. LOT NO. _____, RECORDED PLAT _____		
5. PRIVATE CLAIMS _____		

REGISTER OF DEEDS STAMP AND
FILING NUMBER

I, Sammy Barnett / Kevin Pritchard, do hereby certify that under requirements of P.A. 74, Michigan P.A. of 1970, the corner points mentioned in lines 1 and 2 above were, in a field survey on August, 19 87, established, re-established, monumented, re-monumented, recovered or restored as expressed below and in conformance with regulations and rules therefore as required in the current manual of survey instructions of the United States Department of the Interior, Bureau of Land Management or by a decree of a court of law. Furthermore, that the corner points mentioned in lines 3, 4 and 5 above were, in a field survey on _____, 19____, found, recovered, restored, established or re-established as expressed below and in conformance with the rules of the Michigan State Board of Registration for Land Surveyors or, by a Decree of a Court of law:

A. Description of original monument and accessories and/or subsequent restoration:
G-4 Quarter corner common to Sections 9 and 10, T26N, R1E.

G-4 1937 Dependent Resurvey set a 6" diam x 24" long conc. monu. w/brass cap.

G-4 Witnesses
Norway Pine N23½E 110 lks
Jack Pine 6" N33½W 263½ lks

B. Description of corner evidence found and/or method applied in restoring or re-establishing corner:
G-4 Found 6" conc. monu. w/brass cap.

Red Pine N27°E 72.70' existing witness

C. Description of monument for corner and accessories established to perpetuate locating the position of the corner:
G-4 Took the following witnesses to the existing conc. monu.

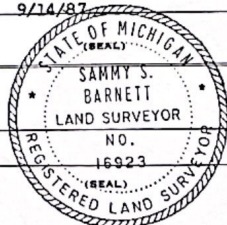
Placed a 60d spike in the side of, blazed and scribed the face of and painted the following

G-4 Red Pine 6" N12°W 15.16'
Red Pine 16" N27°E 72.70' existing witness
Power Pole S56°E 74.48'
Cedar Post

SIGNED BY Sammy Barnett DATE 9/14/87
SURVEYOR'S MICHIGAN REGISTRATION NO. 16923

FOR STATE AND UNITED STATES AGENCIES:

SIGNED BY _____ DATE _____
CHIEF OF SURVEY PARTY
APPROVED AND SIGNED BY _____ DATE _____
MICHIGAN REGISTERED LAND SURVEYOR



SURVEYOR'S MICHIGAN REGISTRATION NO. _____

FORM APPROVED BY MICHIGAN STATE BOARD OF REGISTRATION, JAN. 28, 1971
REVISED MAY 14, 1975

MAY PLACE SKETCH ON BACK OR ATTACHED SHEET

LAND CORNER RECORDATION CERTIFICATE

FILING REQUIREMENT OF ACT 74, MICH. P.A.1970

OSCODA COUNTY, BIG CREEK TOWNSHIP
FOR CORNERS OF:-

LOCATED IN:- Sec 3

CORNER CODE NUMBER

1. PUBLIC LAND SURVEY T. 26 N. R. 1 E. H-3; G-3; G-2
2. PROPERTY CONTROLLING IN SECTION T. S. R. W. H-1
3. MISCELLANEOUS PROPERTY IN SECTION T. S. R. W.
4. LOT NO. , RECORDED PLAT
5. PRIVATE CLAIMS

Liber 1
Page 233

FILED

At 9:18 AM on 11-14-79

11-14-79

11-14-79

11-14-79

11-14-79

11-14-79

11-14-79

I, Edwin J McCombs, do hereby certify that under requirements of P.A. 74, Michigan P.A. of 1970, the corner points mentioned in lines 1 and 2 above were, in a field survey on in May, 1978, established, re-established, monumented, re-monumented, recovered or restored as expressed below and in conformance with regulations and rules therefore as required in the current manual of survey instructions of the United States Department of the Interior, Bureau of Land Management or by a decree of a court of law. Furthermore, that the corner points mentioned in lines 3, 4 and 5 above were, in a field survey on 19, found, recovered, restored, established or re-established as expressed below and in conformance with the rules of the Michigan State Board of Registration for Land Surveyors or, by a Decree of a Court of law:

A. Description of original monument and accessories and/or subsequent restoration:

- H-3 Found Resurvey GLO monument
G-3 Found Resurvey GLO monument for witness point
G-2 Found Resurvey GLO monument
H-1 Found Resurvey GLO monument

B. Description of corner evidence found and/or method applied in restoring or re-establishing corner:

C. Description of monument for corner and accessories established to perpetuate locating the position of the corner:

- | | | | | | | | |
|-----|---------------|--------|--------|-----|----------------------------|--------|--------|
| H-3 | 6" red pine | S 45°E | 22.82' | G-2 | 8" spruce | N 25°E | 32.92' |
| | 15" oak | N 26°E | 13.57' | | 12" spruce | N 15°W | 30.10' |
| | 15" oak | N 80°W | 38.71' | | 20" spruce | East | 18.56' |
| | 6" red pine | S 10°W | 28.42' | | | | |
| G-3 | Set Re-rod | | | H-1 | 20" red pine | N 50°E | 46.48' |
| | 10" Jack pine | S 85°E | 31.75' | | 10" oak | N 30°W | 39.99' |
| | 15" oak | N 20°W | 34.77' | | 6" oak | S 50°W | 38.90' |
| | 8" Jack pine | S 25°W | 14.67' | | 15" oak | S 40°E | 40.13' |
| | | | | | GLO monument for T27N, R1E | East | 11.12' |

SIGNED BY Edwin J McCombs

DATE

SURVEYOR'S MICHIGAN REGISTRATION NO. 10696

FOR STATE AND UNITED STATES AGENCIES:

SIGNED BY

DATE

APPROVED AND SIGNED BY

DATE

MICHIGAN REGISTERED LAND SURVEYOR

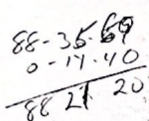
(SEAL)

SURVEYOR'S MICHIGAN REGISTRATION NO.

FORM APPROVED BY MICHIGAN STATE BOARD OF REGISTRATION, JAN. 28, 1971
REVISED MAY 14, 1975

MAY PLACE SKETCH ON BACK OR ATTACHED SHEET

1944-1945



Scanned with CamScanner

Section 10 (cont. Mon)
 N 35 E 51.3 3" Norway
 S 40 E 12.0 12" J. Pine
 South 17.9 10" Oak
 West 60.0 Pipe line
 N 27 W 78.3 Tele. P.

South 1/8 corner on West Section
 line Section 10 T 26 N, R 1 E.
 Set 3/4" pipe = no wit available.

W 1/8 Corner on South Section line
 Section 10 T 26 N, R 1 E
 Set 1" pipe
 S 80 E 30.2 8" Birch
 S 77 W 48.90 12" Birch
 N 40 E 20.75 6" Poplar

SW Section Corner Section 10
 T 26 N, R 1 E.
 Found G.L.O. mon with Brass cap.
 N 12 W 19.2 8" Cedar
 N 25 E 15.7 16" Cedar
 S 22 E 8.7 14" Cedar

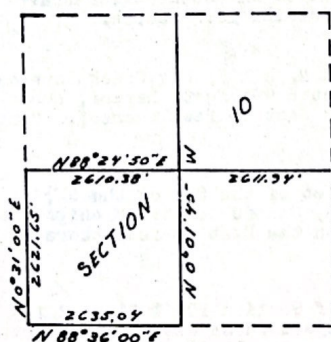
South Corner on west 1/8 line
 Section 10 T 26 N, R 1 E
 S 20 E 25.7 10" J. Pine
 N 15 13.7 8" "
 West 66.0 1" Bar with
 R.L.S. cap.

West 1/8 Corner Section 10 T 26 N,
 R 1 E.
 Found G.L.O. mon. with Brass cap
 N 12 W 15.0 5" T. Norway
 N 27 E 72.0 20" Norway
 S 56 E 74.0 Tele Pole
 S 9 W 27.7 3" Norway

West 1/8 Corner on EW 1/2 line Section 10
 T 26 N R 1 E
 Set 1" Bar with R.L.S. cap measured
 1/2 in SW 88° 10' 10"
 S 60 E 28.15 4" J. Pine
 S 24 E 100.00 20" Norway
 West 66 1" Bar with
 R.L.S. cap

East Corner Section 10, T 26 N,
 R 1 E.
 Found 1" "T" iron over G.L.O. mon.
 S 40 W 75.2 14" J. Pine
 N 43 E 54.4 Tele Pole

Section Detail not to scale



Survey for: Joe Bills
 At request of: SAME
 File No. 91 26/1
 Sheet No. 3 of 3

Norman C. Caldwell
 Norman C. Caldwell, R. L. S. #12018
 409 Moranci Ave. M-33
 Mio, Michigan, 48047

Date: June 21, 1973

LIBER

1 PAGE 331

