

SURVEY FOR:  
U.S.D.A. FOREST SERVICE  
HURON - MANISTEE NATIONAL FOREST  
1755 S. MITCHELL STREET  
CADILLAC, MICHIGAN 49601

## SURVEY CERTIFICATE

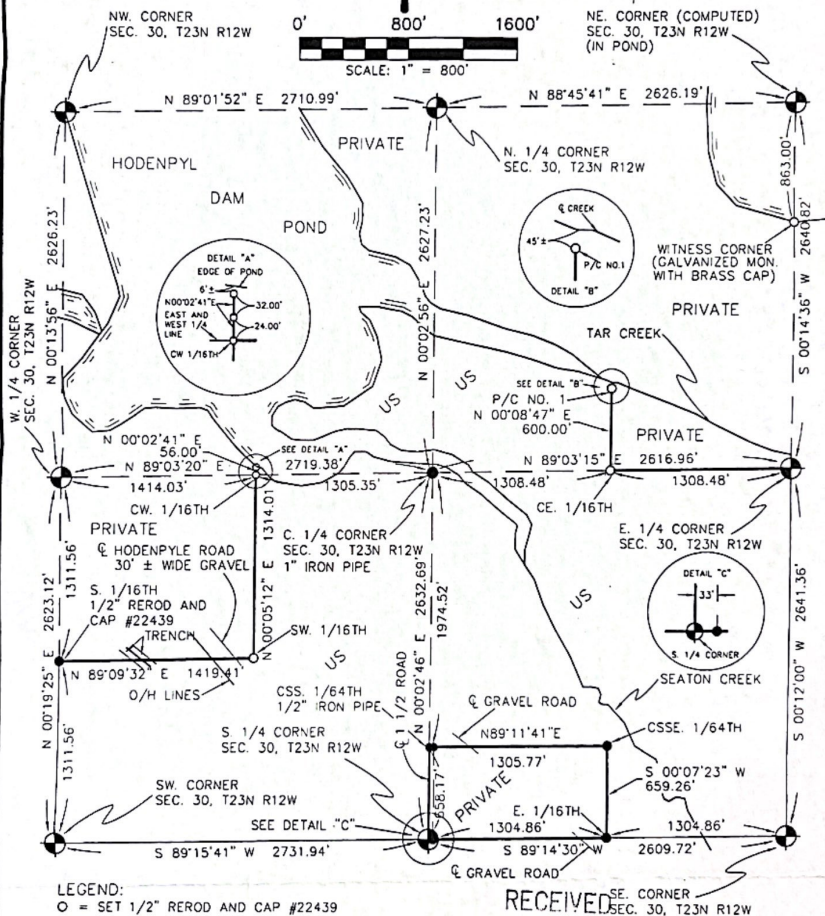
SECTION 30, T23N R12W, SPRINGVILLE TWP., WEXFORD  
COUNTY, MICHIGAN.

THE RATIO OF CLOSURE IS LESS THAN 1 IN 5000.  
THIS SURVEY COMPLIES WITH THE REQUIREMENTS  
OF SECTION 3 OF P.A. 132 OF 1970, AS AMENDED.

MEAN ERROR OF CLOSURE FOR PROJECT IS  
1 ~ 34,285.

BEARING BASIS FROM CONSUMERS POWER COMPANY  
SURVEY, JOB S-F 14075, MARCH 1978. (LINE  
BETWEEN THE SW. CORNER AND THE W. 1/4 CORNER  
OF SEC. 30, T23N R12W)

TO CONVERT FEET TO METERS: (N) FEET X 0.3048 = METERS



RECEIVED SEC. CORNER  
SEC. 30, T23N R12W

2000 MAY 10 PM 4:35



*Norman L. Ochs*  
Norman L. Ochs, R.L.S. #22439  
WEXFORD COUNTY, MI  
REGISTERED SURVEYOR

SCALE: 1" = 800'

DRAWING NO.

DATE: 03-22-00

DRAWN BY: B.D.K.

99212B

NEWAYGO ENGINEERING & SURVEY CO.

274 NORTH CHARLES STREET (M-37)

WHITE CLOUD, MI 49349

P.O. BOX 35 AREA CODE (231) 689-1701

FAX NO. (231) 689-0964

## SURVEY CERTIFICATE

## SECTION 30, T23N R12W

## WITNESSES

NW Corner, Sec. 30, T23N R12W

Recorded in Liber 05, Page 229

Found 1' x 1' Concrete Monument with 2" diameter Iron Pipe, set 3/4" brass cap on top of Pipe. (3 1/2' above grade)  
 West edge of Conc. Seawall East 48'±  
 1/2" x 18" Rod and cap #22439 N90°E 22.00' (in centerline of road on top of earthen dam)  
 1/2" x 18" Rod and cap #22439 N00°E 42.00' (in centerline of road on top of earthen dam)  
 Power Pole S85°W 131.42'  
 Power Pole S20°W 275.26'  
 Steel "T" Fence Post with "Land Survey Monument" tag North 2.00'

N 1/4 Corner, Sec. 30, T23N R12W

Recorded in Liber 05, Page 231

Set 2' x 30" galvanized Pipe with 3/4" brass cap  
 24" Maple (blazed) N30°W 62.45'  
 30" Beech (blazed) S57°W 66.74'  
 10"-10" Twin Elm (blazed) S83°E 27.70'  
 12" Maple (blazed) N74°E 9.31'  
 12" Maple (blazed) S85°W 18.53'  
 Steel "T" Fence Post with "Land Survey Monument" tag North 1.00'

Witness Corner to the NE Corner, Sec. 30, T23N R12W

Recorded in Liber 05, Page 233

Set 2' x 30" galvanized Pipe with 3/4" brass cap, 863.00' South of computed position of the Northeast Corner.  
 14" Maple (blazed) S23°E 86.71'  
 12" Yellow Birch (blazed) S16°W 84.44'  
 4" Maple (blazed) S59°W 132.69'  
 Southeast Corner Concrete Boat Ramp N75°W 17.00' ±  
 South edge of pond North 6'±  
 Steel "T" Fence Post with "Land Survey Monument" tag North 1.00'

W 1/4 Corner, Sec. 30, T23N R12W

Recorded in Liber #96-356

Found 2' x 30" galvanized Pipe with 3/4" brass cap  
 18" Red Pine (blazed) N40°E 48.12'  
 Power Pole N25°W 5.76'  
 15" Red Pine (blazed) S09°E 102.95'  
 18" Red Pine S78°E 78.02'

E 1/4 Corner, Sec. 30, T23N R12W

Recorded in Liber 05, Page 234 and 235

Set 2' x 30" galvanized Pipe with 3/4" brass cap  
 18" Maple (blazed) N41°E 13.16'  
 14" Ash (blazed) S05°W 12.73'  
 8" Maple (blazed) S69°W 17.04'  
 12"-14" Twin Basswood (blazed) N02°W 29.19'  
 Steel "T" Fence Post with "Land Survey Monument" tag West 1.00'

SW Corner, Sec. 30, T23N R12W

Recorded in Liber #96-271

Found 5' x 5' Concrete Monument with 3" brass disk  
 12" Red Pine (blazed) S20°E 6.37'  
 10" Maple (blazed) S11°W 29.15'  
 12" Red Pine (blazed) N24°E 7.20'  
 12" Red Pine (blazed) N89°W 54.87'

S 1/4 Corner, Sec. 30, T23N R12W

Recorded in Liber 05, Page 232

Set 2' x 30" galvanized Pipe with 3/4" brass cap  
 12"-14" Twin Red Oak (blazed) N62°E 71.62'  
 14" Red Pine (blazed) N77°W 75.71'  
 14" Red Pine (blazed) N11°W 62.17'  
 10" Red Pine (blazed) S32°E 55.50'  
 4" Conc. Mon. and Carsonite Post East 33.00'

CSSE 1/64th Corner, Sec. 30, T23N R12W

Recorded in Liber 05, Page 225

Found 4" diameter Concrete Monument  
 6" Red Pine (blazed) N50°W 15.23'  
 8" White Pine (blazed) S26°W 18.18'  
 5" Red Oak (blazed) S60°E 14.90'  
 Steel "T" Fence Post with "Land Survey Monument" tag West 1.00'

SE Corner, Sec. 30, T23N R12W

Recorded in Liber 05, Page 236 and 237

Found 5' x 5' Concrete Monument with 3" diameter brass disk  
 24" Black Oak (blazed) N81°E 66.52'  
 18" White Pine (blazed) S61°E 72.51'  
 16" Maple (blazed) S36°W 63.22'  
 10" Red Pine (blazed) N85°W 45.70'  
 10" White Pine (blazed) S04°W 23.48'  
 4" diameter Wood Post with Forest Service Location Poster South 2.3'

C 1/4 Corner, Sec. 30, T23N R12W

Recorded in Liber 5, Page 226

Found 1" Iron Pipe, Set 1/2" x 18" Rod and cap #22439 inside Iron Pipe  
 14" Red Pine (blazed) N65°W 27.98'  
 12" White Pine (blazed) N31°E 27.36'  
 14" Maple (blazed) S31°E 9.60'  
 16" Red Pine (blazed) S39°W 38.84'  
 Steel "T" Fence Post with "Land Survey Monument" tag East 2.00'

S 1/16th Corner on the West line of Sec. 30, T23N R12W

Recorded in Liber 05, Page 226

Found 1/2" x 18" Rod with cap #22439  
 14" Red Pine (blazed) S58°E 7.18'  
 12" Red Pine (blazed) N26°E 21.04'  
 10" Red Pine (blazed) S68°W 24.48'  
 Steel "T" Fence Post with "Land Survey Monument" tag West 1.00'

E 1/16th Corner on the South line of Sec. 30, T23N R12W

Recorded in Liber 05, Page 230

Found 4" diameter Concrete Monument  
 8" Maple (blazed) N14°W 6.26'  
 16" Red Pine (blazed) N39°E 43.97'  
 18" Red Pine (blazed) S25°E 52.32'  
 Steel "T" Fence Post with "Land Survey Monument" tag North 1.00'

CW 1/16th Corner, Sec. 30, T23N R12W

Recorded in Liber 05, Page 228

Set 1/2" x 18" Rod with cap #22439  
 16" Red Pine (blazed) S55°W 41.10'  
 16" Red Pine (blazed) S10°W 87.24'  
 8" Red Oak (blazed) S79°E 50.18'  
 Steel "T" Fence Post with "Land Survey Monument" tag North 1.00'

SW 1/16th Corner, Sec. 30, T23N R12W

Recorded in Liber 05, Page 228

Set 1/2" x 18" Rod with cap #22439  
 6" Maple (blazed) N34°E 23.30'  
 14" White Pine (blazed) S39°E 25.01'  
 14" Maple (blazed) S66°W 13.85'  
 Steel "T" Fence Post with "Land Survey Monument" tag North 1.00'

CE 1/16th Corner, Sec. 30, T23N R12W

Recorded in Liber 05, Page 230

Set 1/2" x 18" Rod with cap #22439  
 12" Red Pine (blazed) N75°E 11.98'  
 12" Red Pine (blazed) S02°E 8.45'  
 14" Red Pine (blazed) S90°W 9.96'  
 Steel "T" Fence Post with "Land Survey Monument" tag North 1.00'

CSS 1/64th Corner, Sec. 30, T23N R12W

Recorded in Liber 05, Page 225

Found 1/2" Iron Pipe  
 12" White Pine (blazed) N80°E 37.67'  
 12" Red Pine (blazed) N73°W 39.41'  
 10" Red Pine (blazed) N35°W 71.10'  
 4" diameter Concrete Monument and Carsonite Post East 33.00'

P.C. No. 1 on the E 1/16th line of Sec. 30, T23N R12W

Set 1/2" x 18" Rod with cap #22439

10" Maple (blazed) S75°E 17.90'  
 6"-8"-16" Triple Maple (blazed) S68°W 6.45'  
 12" Cherry (blazed) S05°W 20.91'  
 Steel "T" Fence Post with "Land Survey Monument" tag North 1.00'



*Norman L. Ochs*  
 Norman L. Ochs, R.L.S. #22439

SCALE:

DRAWING NO.

DATE:

03-22-00

DRAWN BY:

B.D.K.

99212B

NEWAYGO ENGINEERING &amp; SURVEY CO.

274 NORTH CHARLES STREET (M-37)

WHITE CLOUD, MI 49349

P.O. BOX 35 AREA CODE (231) 689-1701

FAX NO. (231) 689-0964



MANISTEE COUNTY  
WEXFORD COUNTY

87R625  
 Printed for Gen. Sec. 30

25 x 10

✓ 133729 Spurred Towhee  
on pine road left of rd. sec. 20, white  
stones around it. Kingbird's nest.  
At White stump ENE 88.0  
AOT " NW 18.2  
30° " WGS 22.6

5342.9 meas. from W 1/4 Cor. to E 1/4 Cor.  
N 508.3 projected distance

1508.3

E. &amp; W. 1/4 line Sec. 50-

E-4 Cor- Sec 30-25-12. Found  
iron safe for corner during error  
of 1859. One witness called a  
Referral of wit. E-4 safe made case  
Difference same time.

old fence) 0.5

Provision of E.O.W.'s Line, Sec. 50-51-12

U.S. 41.53	2741.0	U.S. 40.00	2640
------------	--------	------------	------

U.S. 2748.9 3 U.S. 27640.0

1972-73: 26.25  
1973-74: 26.66

Stoke Cat  
11-12-1988

---

11.8 = 41.80 = 2750.0	17.5 = 40.00 = 2650.0
-----------------------	-----------------------

O - original gov't. survey corners located on river survey of 1808. X - iron stake set in 1808, to mark lost gov't. corner.

N.E.S. 1/4 Line Sec. 30-23-12

NW  $\frac{1}{4}$ ; SE  $\frac{1}{4}$ ; Sec 30-23N-12W

[illegible]

FORMER DWG. E-2266

FINAL APPROVAL	
DATE	SALT CONCENTRATION
4/17/77	2.5 M NaCl
MICROBIAL LOGS	
ELECTROLYTE INJECTION	

[illegible]

CONSUMERS POWER COMPANY  
ENGINEERING DEPARTMENT  
JACKSON MICHIGAN  
FLOWAGE OF COUNTY LINE POND  
ON  
NW 1/4 SE 1/4 SEC. 30 T23N. R12W

SCALE 100:1"

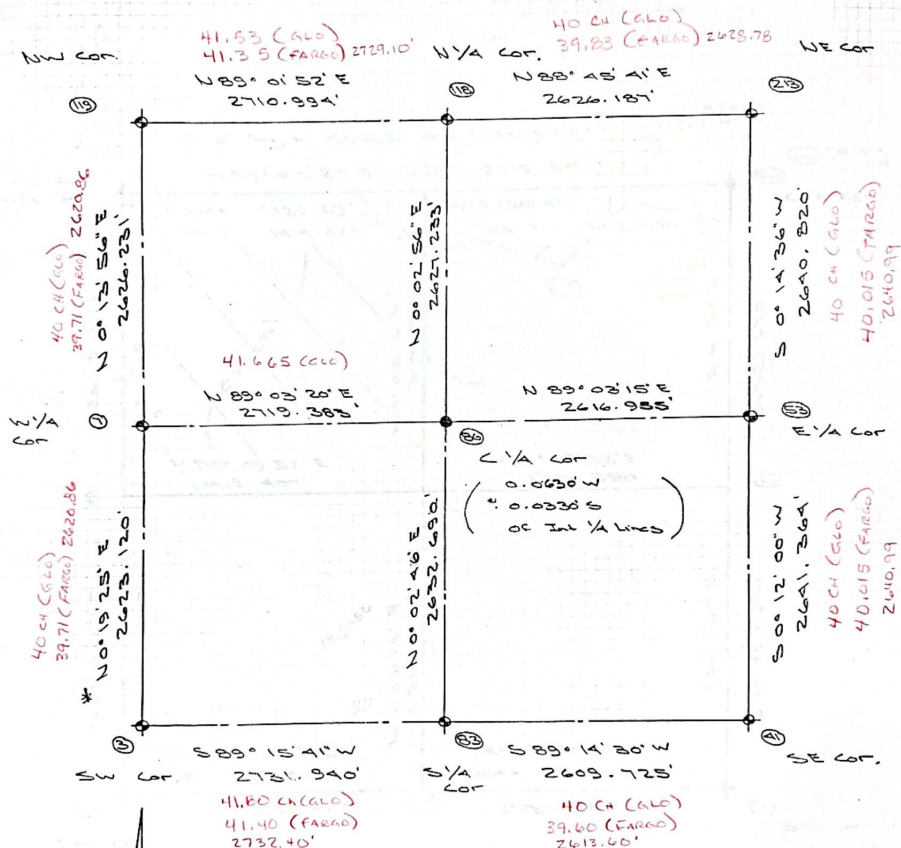
DRAN BY E.H.B. DATE 11-15-22 TOLDED BY N.H.W. DATE 11-17-22  
 CHECKED BY 5750. DAVID 7/12/22 INSPECTED BY \_\_\_\_\_ DATE \_\_\_\_\_

5.E.16397

Scanned with CamScanner

Sec. # 30, T. 23 N. - R. 12 W

Springville Twp., Wexford Co., Michigan



\* Brg. from "C. P. C. O. Survey"  
 Job S-F 14075  
 on or about 31 March 1978

TAM -  
 Brg. Survey  
 No. 99212

