

LAND CORNER RECORDATION CERTIFICATE

Filing Requirement of Act 74, Mich. PA 1970

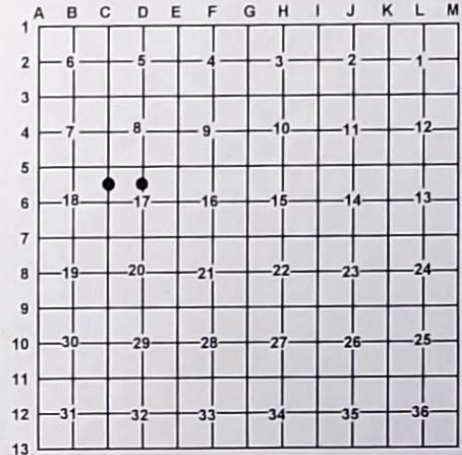
Instrument 201800075064

Liber Page 1 826

For Corners In: Montmorency (County) Located In Corner Code #
1. Public Land Survey T R
2. Property Controlling in Section S 17 T 32N R 3E 3 S 17 T 32N R 3E 5
3. Miscellaneous Property in Section S T R
4. Lot No: Recorded Plat:
5. Private Claims:

201800075064
Filed for Record in
MONTMORENCY COUNTY, MI
TERESA WALKER, REGISTER OF DEEDS
07-11-2018 At 09:01:18 am.
LAND CORNER 30.00
Liber 1 Page 826 - 826

Register of Deeds Stamp & File Number



I, Carl T. Kiiskila, in a field survey on September, 6, 2016 do hereby state that under requirements of PA 74, Michigan PA of 1970, the corner points mentioned in lines 1 and 2 above were in conformance with regulations and rules therefore as required in the current manual of survey instructions of the United States Department of the Interior, Bureau of Land Management or by a decree of a Court of Law and/or that the corner points mentioned in lines 3, 4 and 5 above were in conformance with the rules of the Michigan Board of Land Surveyors or by a Decree of a Court of Law, established, re-established, monumented, recovered, found as expressed below:

NOTE: Not more than 2 corners, all in the same town and range, may be recorded on this certificate.

A. Description of original monument and accessories and/or subsequent restoration:

3 - N 1/16 Corner common to Sections 17&18 T32N,R03E 5 - CN 1/16 Corner Section 17, T32N,R03E
This corner was not set during the Original GLO Survey. This corner was not set during the Original GLO Survey.

B. Description of corner evidence found and/or method applies in restoring or re-establishing corner:

3 - N 1/16 Corner common to Sections 17&18 T32N,R03E 5 - CN 1/16 Corner Section 17, T32N,R03E
Set a 5/8" rerod with 2" Aluminum Cap # 33981 by Standard BLM procedure for subdivision of a section. Set a 5/8" rerod with 2" Aluminum Cap # 33981 by Standard BLM procedure for subdivision of a section.

C. Description of monument for corner and accessories established to perpetuate locating the position of the corner:

3 - N 1/16 Corner common to Sections 17&18 T32N,R03E 5 - CN 1/16 Corner Section 17, T32N,R03E
5/8" rerod with 2" Aluminum Cap 5/8" rerod with 2" Aluminum Cap
Witnesses:
N84°E 6.70' to set N&T on N side 12" Cedar N30°E 25.95' to set N&T on NW side 6" Balsam
S01°E 18.95' to set N&T on W side 8" Balsam N89°E 8.56' to set N&T on N side 24" R. Pine
S82°W 19.30' to set N&T on S side 9" Cedar S20°W 31.77' to set N&T on W side 3" R. Pine
N27°W 9.60' to set N&T on W side 10" Cedar S74°W 30.95' to set N&T on S side 24" R. Pine
Set Blue Post 1' North Set Blue Post 1' North

Signed by: Carl T. Kiiskila
Surveyor's Michigan License No.: 33981

Date: 4-18-18



LAND CORNER RECORDATION CERTIFICATE

Filing Requirement of Act 74, Mich. PA 1970

6b

For Corners In: Montmorency Located In _____ Corner Code # _____
(County)

1. Public Land Survey	T	<u>32N</u>	R	<u>3E</u>	<u>C-5</u>
	T	<u>32N</u>	R	<u>3E</u>	<u>C-6</u>
2. Property Controlling in Section	S	_____	T	_____	_____
	S	_____	T	_____	_____
3. Miscellaneous Property in Section	S	_____	T	_____	_____
	S	_____	T	_____	_____

4. Lot No: _____ Recorded Plat: _____
5. Private Claims: _____

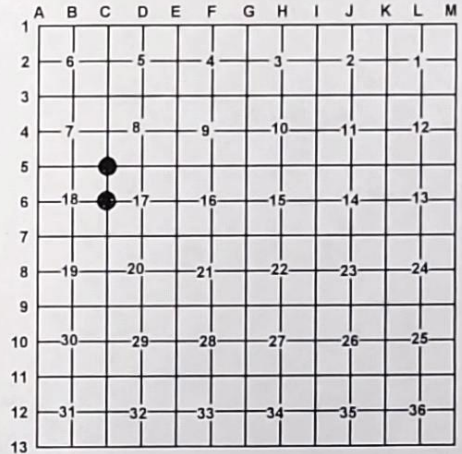
I, Carl T. Kiiskila, in a field survey on June 2, 2016 do hereby state that under requirements of PA 74, Michigan PA of 1970, the corner points mentioned in lines 1 and 2 above were in conformance with regulations and rules therefore as required in the current manual of survey instructions of the United States Department of the Interior, Bureau of Land Management or by a decree of a Court of Law and/or that the corner points mentioned in lines 3, 4 and 5 above were in conformance with the rules of the Michigan Board of Land Surveyors or by a Decree of a Court of Law; established, re-established, monumented, recovered, found as expressed below:

NOTE: Not more than 2 corners, all in the same town and range, may be recorded on this certificate.

Instrument 201800075066 Liber Page 1 828

201800075066
Filed for Record in
MONTMORENCY COUNTY, MI
TERESA WALKER, REGISTER OF DEEDS
07-11-2018 At 09:02:03 am.
LAND CORNER 30.00
Liber 1 Page 828 - 828

Register of Deeds Stamp & File Number



A. Description of original monument and accessories and/or subsequent restoration:

C-5 - Corner comm. to sections 7,8,17 & 18, T32N,R03E

1850 - GLO - Hiram Burnham - Set post for corner to sections 7,8, 17&18.

Aspen 12 S40°E 28
Y. Pine 10 N20°E 30

1986 - L.C.R.C. L.001, p.399 - Delmer E. Porter P.S.# 15410
Found 2" pipe in Concrete (M. Schaaf)

N20°E 38.28' 16" Spruce
N64°E 17.19' 8" Maple
S31°W 33.45' NE Cor. Cabin

C-6 - 1/4 Corner comm. to sections 17 & 18, T32N,R03E

1850 - GLO - Hiram Burnham - Set Tamarack post for 1/4 corner Common to Sections 17&18.

Sugar 10 S40°W 27
Hemlock 10 East 02

1986 - L.C.R.C. L.001, p.399 - Delmer E. Porter P.S.# 15410
Set a 1/2" Capped iron rod by single prop measurement

S85°E 25.08' 10" Balsam
S37°E 18.26' 14" Spruce
S48°W 8.57' 6" Balsam
S80°W 23.40' 10" Balsam

B. Description of corner evidence found and/or method applies in restoring or re-establishing corner:

C-5 - Corner comm. to sections 7,8,17 & 18, T32N,R03E

Found 2" Pipe Per L.C.R.C. - L. 001, p.399. Accepted found pipe as the best available evidence for the position of the original corner.

C-6 - 1/4 Corner comm. to sections 17 & 18, T32N,R03E

Found 1/2" CIR Per L.C.R.C. - L. 001, p.399. Set a Standard DNR Monument . Accepted found CIR as the best available evidence for the position of the original corner.

C. Description of monument for corner and accessories established to perpetuate locating the position of the corner:

C-5 - Corner comm. to sections 7,8,17 & 18, T32N,R03E

Added PS Cap #33981 to found 2" pipe

C-6 - 1/4 Corner comm. to sections 17 & 18, T32N,R03E

Standard DNR Monument

Witnesses:

* N15°E 38.43' to set N&T on E side 26" Spruce
S63°E 9.10' to set N&T on N side 4" W. Pine
S49°W 46.48' to NE Corner Brick Chimney
N52°W 48.55' to set N&T on E side 11" Maple

Set blue post 1' North

* Witness of previous record

Witnesses:

* N02°E 8.53' to set N&T on W side 6" Balsam
*S89°E 25.34' to set N&T on N side 13" Balsam
S62°W 17.47' to set N&T on S side 6" Balsam
*N83°W 23.34' to set N&T on N side 14" Balsam

Set blue post 1' North

* Witness of previous record.

Carl T Kiiskila

4-18-18

Surveyor's Michigan License No.:

33981

