

# SURVEY MAP OF SEC. 29, T.31N.,R.6W. ANTRIM CO.

## Survey Report

PURPOSE: THIS RETIREMENT AND BOUNDARY SURVEY WAS EXECUTED FOR THE PURPOSE OF DELINEATING THE BOUNDARY OF CERTAIN STATE-OWNED LANDS FOR USE BY FOREST MANAGEMENT DIVISION IN THE PROPER ADMINISTRATION OF SAID LANDS.

CONTROLLING CORNERS: DESCRIPTION OF CORNERS AS NOTED ON ADJOINING SURVEY MAP WITH COMPLETE CORNER DESCRIPTION HISTORY, WITH ACCESS ON LAND CORNER RECORDATION CERTIFICATES AS FILED AT THE ANTRIM COUNTY REGISTER OF DEEDS OFFICE, PER ACT 74, P.A. 1970; COPIES ON FILE AT APPROPRIATE DEPARTMENT OFFICES.

SURVEY NOTES: BEARING BASIS FOR THIS SURVEY IS FROM A PREVIOUS DEPARTMENT OF NATURAL RESOURCES SURVEY PROJECT 72-1 COMPLETED IN 1971. THE WEST HALF OF THE NORTH LINE OF SECTION TWENTY NINE HAS A RECORDED BEARING OF S 89°35'10"E.

TRAVERSE WORK UTILIZED A ZEISS ELTA-3 TOTAL STATION.

UNLESS OTHERWISE NOTED, DNR MONUMENTS CONSIST OF A FOUR-INCH ALUMINUM CAP ON A 1" GALVANIZED IRON PIPE.

CERTIFICATION: I HEREBY CERTIFY THAT THE MAP DELINEATED HEREON IS A TRUE REPRESENTATION OF THE FINDINGS OF THIS SURVEY, AND THAT THE MONUMENTS FOUND OR ESTABLISHED AND MEASUREMENTS MADE ARE AS SHOWN HEREON.

*Carl T. Kiskila*  
CARL T. KISKILA, P.S. #33981

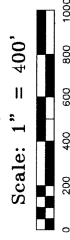


## Legend

Location of roads, trails, rivers, etc. are approximate only from aerial photos, quadrangle maps and field ties.

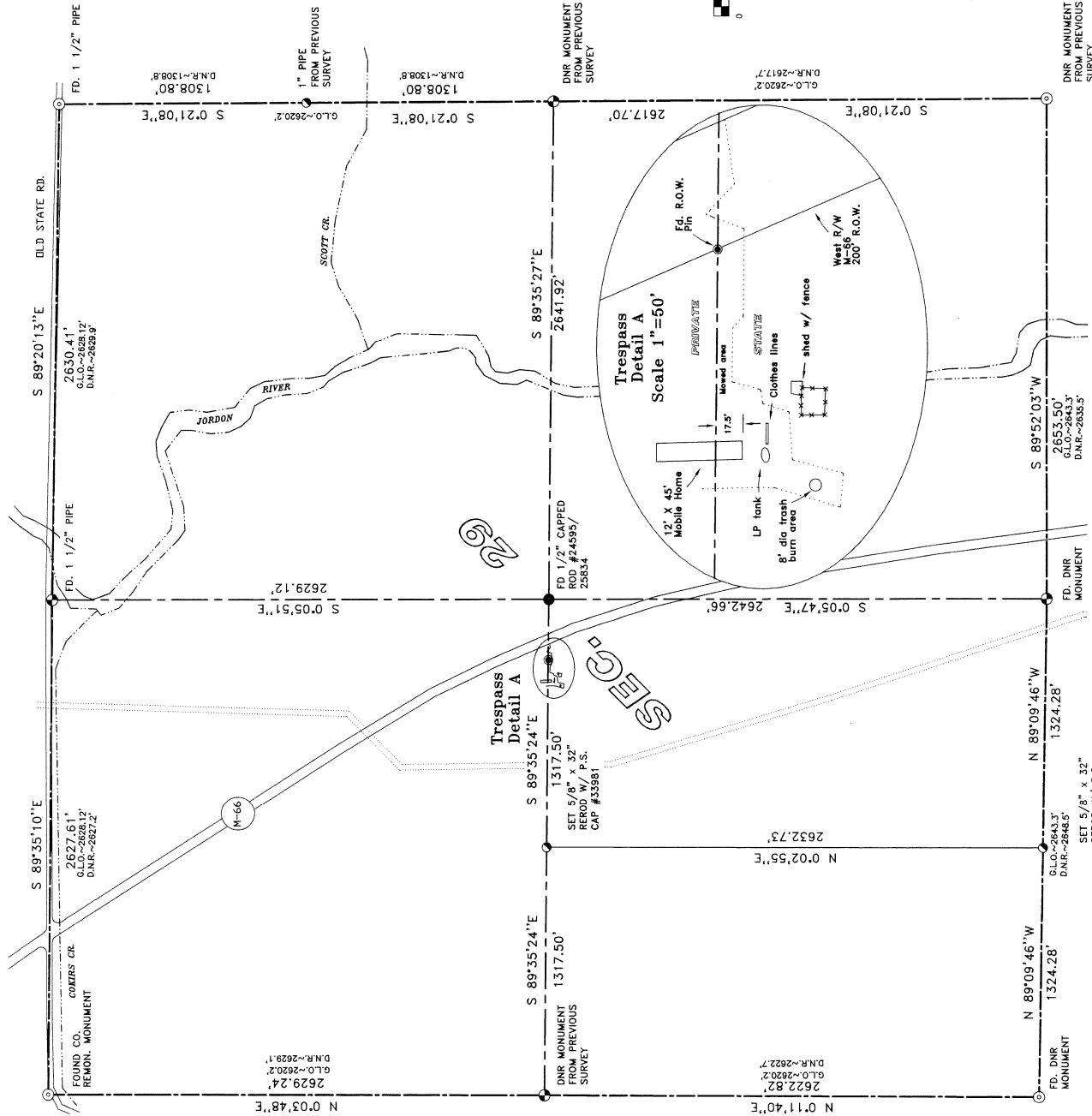
SP = Single Proportion to U.S.  
DP = Double Proportion to U.S.  
US = U.S. Govt. General Land Office (GLO) survey of Township lines in 1839 & 1856. Township subdivided in 1856.

M = Measured on true line.  
Mc = Meas. & Cut in on true line.  
Cr = Computed from random line.  
C = Computed line not on true line.  
D.N.R. = Michigan Dept. of Natural Resources 1977 survey.



- ⊙ = Section Corner
- ⊙ = Quarter Corner
- = 1/16 Corner
- = As Noted

- Paved Road
- - - Gravel Road
- ⋯ Pipe Line
- ~ Lake or River



**Michigan**  
**Department of Natural Resources**  
Forest Management Division - Lower Peninsula - Survey Section

TYPE OF SURVEY: BOUNDARY & SECTION  
SUBDIVISION: ANTRIM CO.  
LOCATION: T.31N.,R.6W., SEC. 29  
DIVISION: Forest Management SURVEY PROJ. NO. Fm 0802  
SURVEY BY: Carl T. Kiskila, P.S. #33981 DATE: August 2002  
DRAWN BY: Matt Feldpausch DATE: August 2002  
FIELD WORK: C.T.K., M.F.

PLAN NO: R-5-W