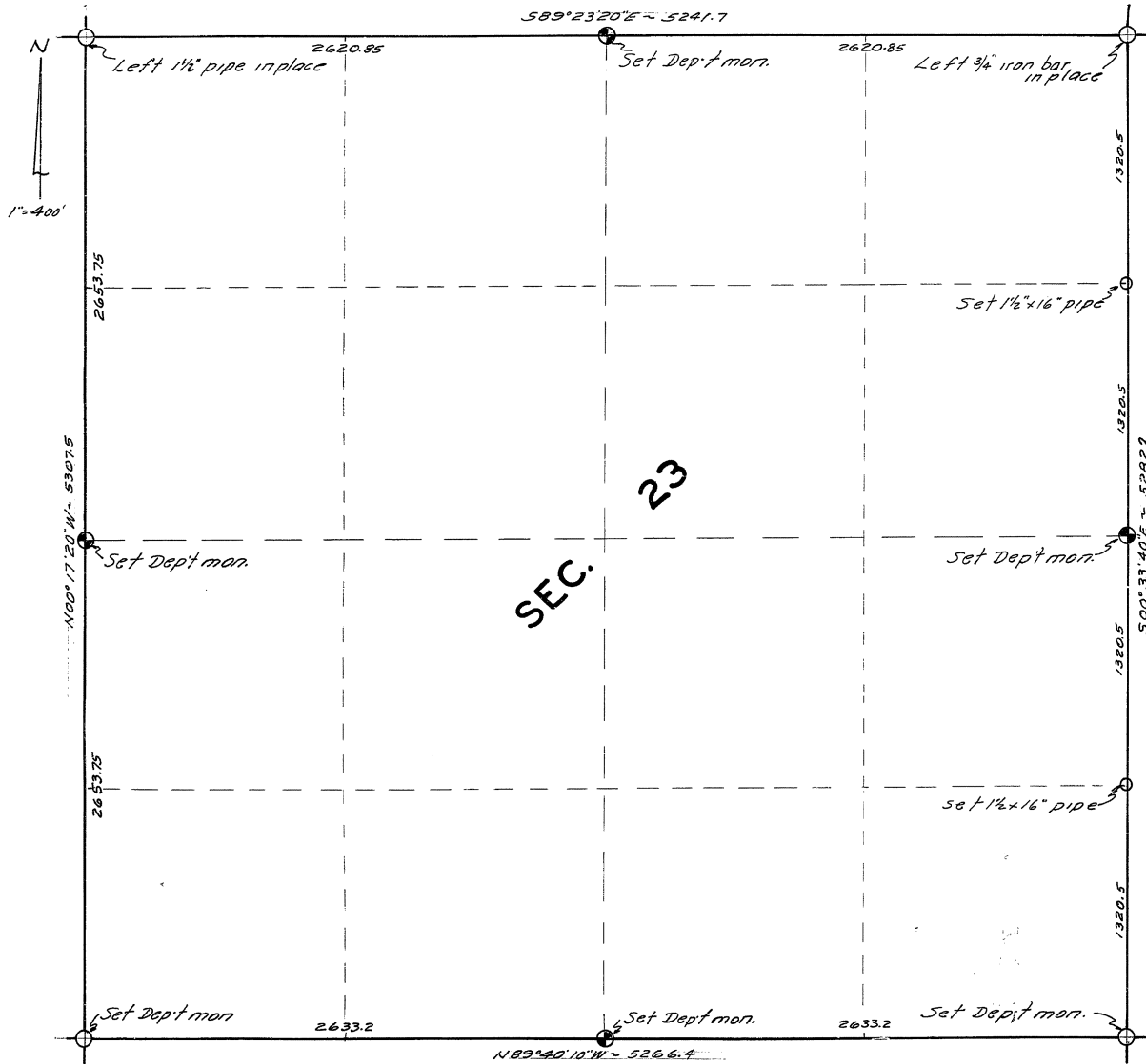


SURVEY MAP OF SECTION 23, T28N, R2E

OSCODA CO.

MINUTES OF SURVEY



PURPOSE:

THE RETRACEMENT OF THIS TOWNSHIP WAS REQUESTED TO LOCATE OR ESTABLISH THE CORNERS NECESSARY TO PROPERLY ADMINISTER THE STATE LANDS SITUATE THEREIN.

GENERAL SURVEY INFORMATION:

THIS TOWNSHIP CONTAINS A GREAT NUMBER OF SITUATIONS WHERE TITLE IDENTIFICATION IS DIFFICULT BECAUSE OF CONFLICTING CORNERS, WHICH HAVE RESULTED FROM VARIOUS SURVEYS CONDUCTED THEREIN. THE ORIGINAL SURVEY WAS POORLY EXECUTED; IN FACT, NON-EXISTENT IN SOME INSTANCES. EARLY SURVEY BY COUNTY SURVEYOR RANDALL AND SEELEY RECOVERED SOME EVIDENCE OF THE ORIGINAL SURVEY AND RESTORED A NUMBER OF CORNERS BY A QUESTIONABLE SYSTEM OF INDEPENDENT RESURVEY. SUBSEQUENT SURVEYS BY VARIOUS LOCAL SURVEYORS SAW FIT TO ACCEPT, CHALLENGE, OR IGNORE PREVIOUS LOCATIONS, RESULTING IN A CONFUSING SITUATION WHERE 2, OR SOMETIMES 3, MONUMENTS PURPORT TO MARK THE CORNERS.

THIS SURVEY ATTEMPTS TO VALIDATE, PERPETUATE, OR RESTORE THE VARIOUS CORNERS, BASED ON A WEIGHTED CONSIDERATION OF ORIGINAL EVIDENCE, COUNTY SURVEYOR RECORDS, SUBSEQUENT SURVEY, OCCUPATION AND INTENT, AND LOCAL ACCEPTANCE.

SURVEY NOTES:

ALL BEARINGS SHOWN HEREON ARE RELATED BY TRANSIT ANGLES TO THE TRUE MERIDIAN, AS DETERMINED BY SOLAR OBSERVATION. MEASUREMENTS ARE IN FEET AND DECIMALS THEREOF. DEPT. MON. IS 1" PIPE WITH 4" ALUM. CAP. SEE DNR LAND CORNER RECORDS FOR FURTHER IDENTIFICATION OF CORNERS.

CORNER EVALUATION:

- NW CORNER - Established by Seeley in 1916 survey. Most occupation based on this position.
- NE CORNER - Originally by Seeley, 1916. Restored by Caldwell 1966.
- SE CORNER - Found Seeley stake bottom from his record. Nothing else evident.
- SW CORNER - Restored according to Seeley procedure of record, 1916 survey.
- N 1/2 - Set by proportionate measurement. Schaaf pipe removed.
- E 1/2 - Set by proportionate measurement.
- S 1/2 - Found Seeley post bottom and stump of Seeley NBT.
- W 1/2 - Set by proportionate measurement.

Kenneth J. Ostling
KENNETH J. OSTLING, RLS #10068

DEPT. OF NATURAL RESOURCES ENGINEERING DIVISION - REGION 2
SECTION BOUNDARY SECTION 23, T28N, R2E OSCODA CO.
FOR: FORESTRY DIVISION
SURVEY BY <u>KENNETH J. OSTLING RLS</u>
MAP BY <u>V. LADUKE, R.S.D.</u>
DATE <u>December, 1969</u>
SURVEY PROJECT NO. <u>69-32-B</u>
FIELD <u>BABBITT, LADUKE, ANNIS.</u>

PLAN No. R-68-AY