

SURVEY MAP

T.28N.,R.2E., SEC. 24

OSCODA COUNTY

Survey Report

PURPOSE: THIS RETRACEMENT AND BOUNDARY SURVEY WAS EXECUTED FOR THE PURPOSE OF DETERMINING THE BOUNDARY OF CERTAIN STATE-OWNED LANDS FOR USE BY FOREST MANAGEMENT DIVISION IN THE PROPER ADMINISTRATION OF SAID LANDS.

CONTROLLING CORNERS: DESCRIPTION OF CORNERS AS NOTED ON ADJOINING SURVEY MAPS AND RECORDS, AND THE BOUNDARY OF CERTAIN STATE-OWNED LAND CORNER RECORDATION CERTIFICATES AS FILED AT THE OSCODA COUNTY REGISTER OF DEEDS OFFICE, PER ACT 74, P.A. 1970; COPIES ON FILE AT APPROPRIATE DEPARTMENT OFFICES.

SURVEY NOTES: BEARING BASIS IS FROM A PREVIOUS DEPARTMENT OF NATURAL RESOURCES SURVEY OF SECTION 24, COMMENCED IN DECEMBER OF 1969, THE WEST HALF OF THE NORTH LINE OF SECTION 24 HAS A RECORDED BEARING OF N89°58'00" E.

TRAVERSE WORK UTILIZED A ZEISS ELTA-3 TOTAL STATION. RATIO OF CLOSURE OF UNADJUSTED FIELD TRAVERSE IN SECTION 24 WAS BETTER THAN 1:15,000 FOR THE PRIMARY TRAVERSE.

UNLESS OTHERWISE NOTED, DNR MONUMENTS CONSIST OF A FOUR-INCH ALUMINUM CAP ON A 1" GALVANIZED IRON PIPE.

CERTIFICATION: I HEREBY CERTIFY THAT THE MAP REFINISHED HEREON IS A TRUE REPRESENTATION OF THE MONUMENTS OF THIS SURVEY AND THAT THE MONUMENTS FOUND OR ESTABLISHED AND MEASUREMENTS MADE ARE AS SHOWN HEREON.

Carl T. Kiiskila
CARL T. KIISKILA, P.S. #33981

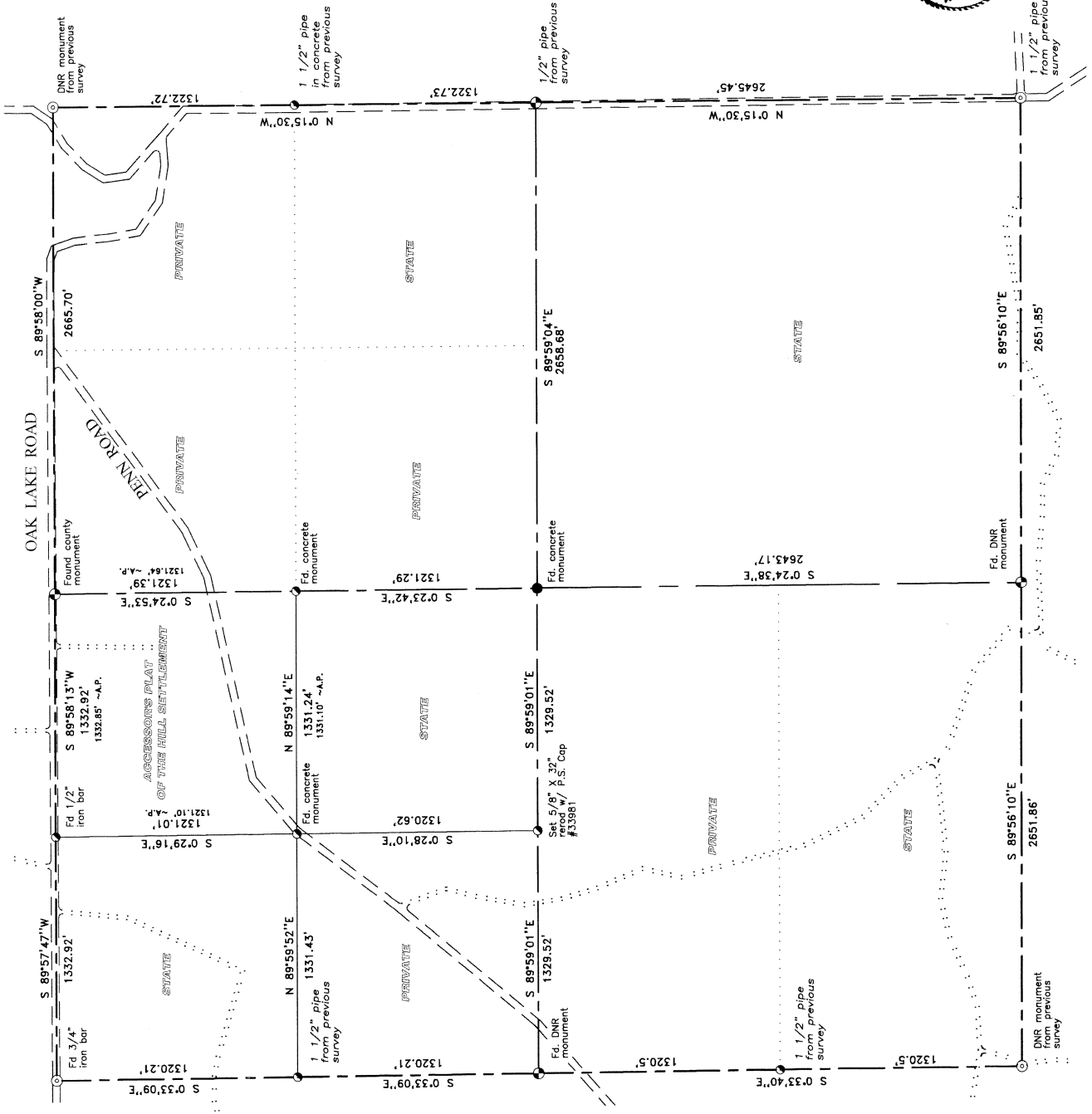
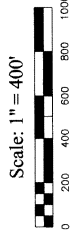
Legend

Location of roads, trails, rivers, etc. are approximate only from aerial photos, quadrangle maps and field ties.

SP = Single Proportion to U.S.
DP = Double Proportion to U.S.
US = U.S. Govt. General Land Office (GLO) survey of township lines 1859.
Township subdivided in 1840.

M = Measured on true line.
Mc = Meas. & cut in on true line.
C = Center of traverse line.
C = Computed from traverse line.
A.P. = Assessor's Plat

- ⊙ = Section Corner
- ⊙ = Quarter Corner
- ⊙ = Center of Section
- ⊙ = 1/16 Corner
- ⊙ = See Corner Record



PLAN NO: R-68-BZ