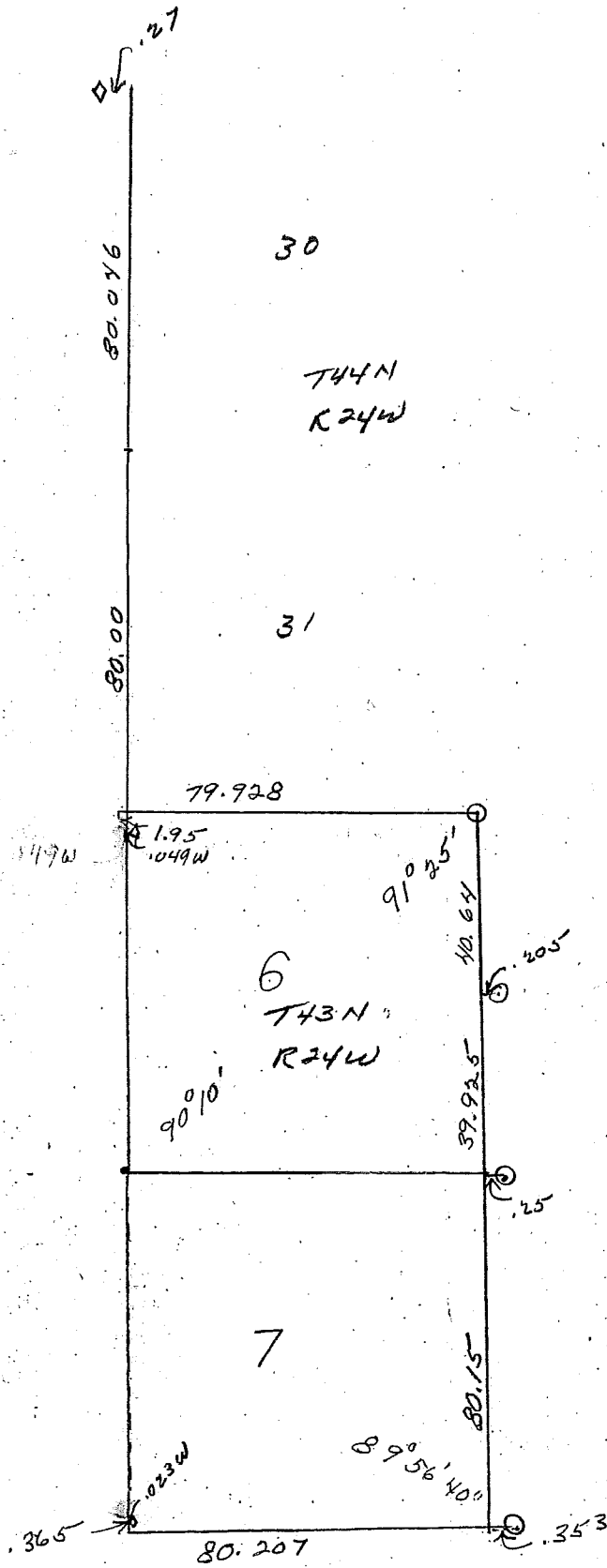
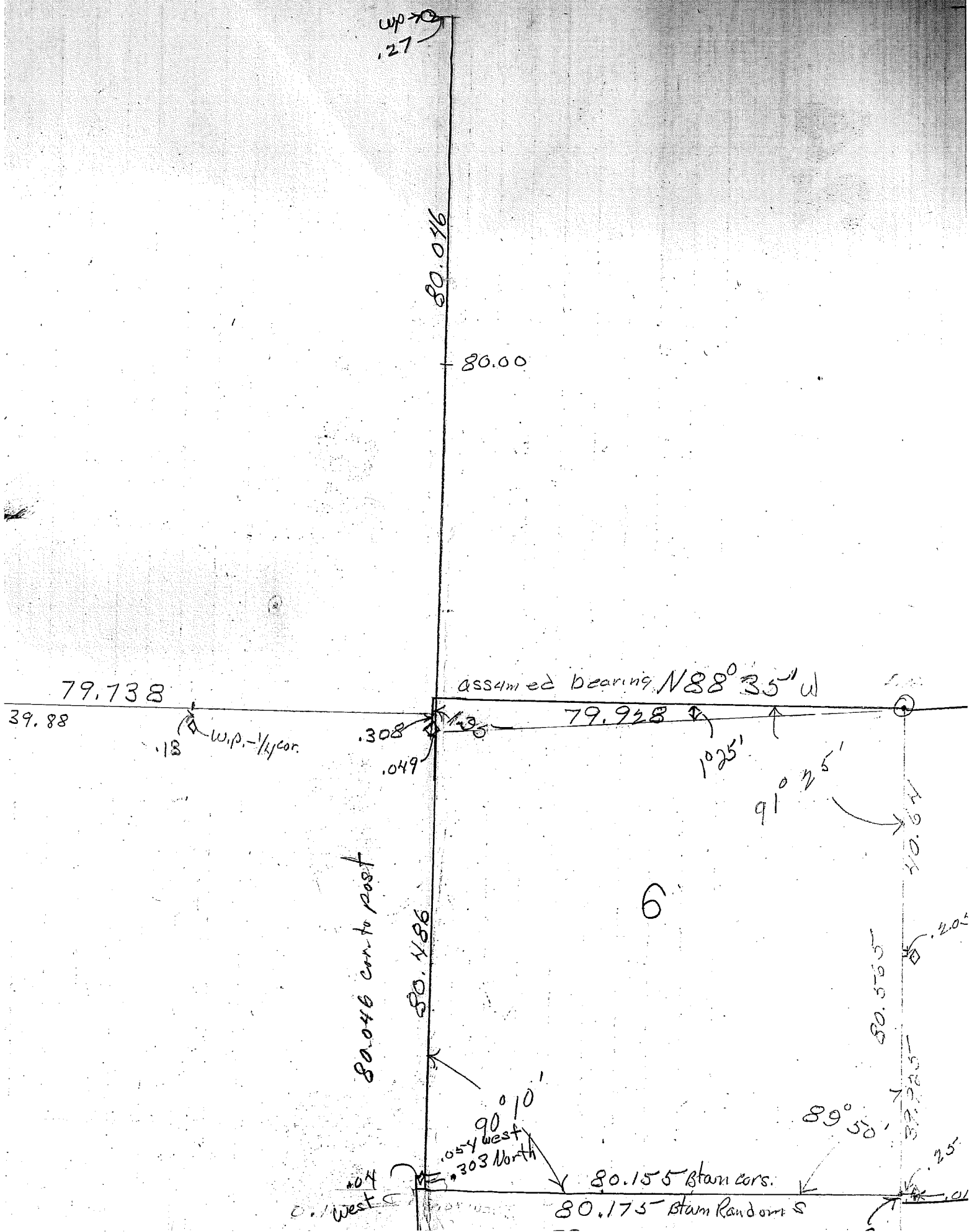


T43+44N R24W





w.p. →
.27

80.046

80.00

79.738

39.88

.18 w.p. - 1/4 cor.

.308
.049

assumed bearing N88°35' W

79.928

1025'

91°25'

40.64

80.046 con. to post

80.186

6

80.5765

.205

90°10'
.054 west
.303 North

89°50'

39.225

.25

.04 West

80.155 Stam cors.

80.175 Stam Random S

.01