

Township 43 North. Range 24 W

	21	21	20	20	19	19	18	18	17	17	16	16	16					
22	19.80		140		97		78		65		51		20.22					
22		32	140	5	96	97	4	77	78	3	14	65	2	50	51	1	20.22	
22	139	139	136	138	97	137	78	66	65	85	51	84	84				14	
23		7	33	136	8	95	98	9	76	79	10	63	66	11	41	52	12	14
23	135	135	132	134	98	133	79	92	66	91	52	90	90				13	
24		13	34	132	17	94	99	18	75	80	15	62	67	14	42	53	13	13
24	108	108	107	107	93	93	68	68	54	54	41	41	41				12	
25		19	10	131	20	100	106	21	60	74	22	55	61	23	43	47	24	12
25	130	130	122	129	105	128	73	127	60	126	46						11	
28		30	11	122	20	102	105	28	70	73	27	59	60	26	45	46	25	11
27	114	114	112	121	104	120	72	119	59	118	45						10	
27		31	11	112	32	103	104	33	71	72	31	57	59	35	44	45	30	10
	20.00																	
	90	132	9	6	6	5	5	4	4	3	3	2	2	2				



RECEIVED

31947

Y DIVISION

82.658
 1.515
 81.143
 62
 80.523

Township 43 North Range 24 West

Town Lines
South BoundaryWest On south side of Section 36 Var. ^{4.55}From past corners of T₄₂+43 N R₂₃+24 W

East 10.60 Birch 13	} Birch 16 N 45 E 23
South 15.30 Hem 18	
16.00 Enter Sup ^{SE} dlo.	

105 22 W -

16.46 Birch 30

27.00 Enter Swamp C.N. + S

29.05 Spruce 6

32.60 Stream 12 C South

40.00 Set gv. section past

Cedar 6 N 15 E 12

dlo. 5 N 26 W 19 }

53.50 Birch 10

71.41 Cedar 10

80.00 Set past corners of sections 35+36

543' W Corrected

Cedar 10 S 58 E 21 Cedar 9 N 15 E 15 }

16.06 Stream 15 SE dlo. 10 N 18 W 30 }

Land (except swp) some rolling 2^d rate

Hemlock Fir Spruce Lynn Cedar

West South side of Section 35 Var. 4.55

11.79 Birch 8

12.25 Stream 12 S.C. South

29.33 Cedar 12

40.00 Hemlock 14 gv. sect. Cor.

Hemlock 20 N 85 E 16

41.00 Lone Swamp C.N. + S.

52.30 Birch 18

75.12 Sugar 12

80.00 Set past corners of sections 34+35

536' W Corrected
Lynn 16 S 50 W 15
Sugar 8 S 40 E 39
8.46 g Birch 36

Sugar 22 N 65 E 58 }

Lynn 12 N 37 W 12 }

Land (except swp) rolling 2^d rate

Sugar Lynn Birch Fir Hemlock

West On South side of sections 34 Var 4.55

13.35 Fir 10

33.33 Sugar 14

40.00 Set gn section post

Hemlock 14 N 25 E 50 }
 hls. 14 N 15 W 70 }

54.28 Sugar 25

73.59 hls. 8

80.00 Set post corner of sections 33 + 34

531' W Corrected
 Sugar 14 S 32 W 24
 " 10 S 70 E 31
 10.47 Sugar 16

Sugar 16 N 30 E 35 }
 hls. 09 N 28 W 10 }

Land rolling 2^d rate Sugar Lynn
 Birch Fir Hemlock & C.

West On South side of sections 33 Var. 5.00

10.20 Elm 60

36.13 hls 48

40.00 Set gn section post

Fir 7 N 35 E 46 }
 Lynn 14 N 40 W 18 }

53.26 Birch 14

70.72 Sugar 20

80.00 Set post corner of sections 32 + 33

537' W Corrected
 Sugar 12 S 18 W 52
 " 10 S 54 E 17
 11.63 Fir 12

Lynn 10 N 66 E 35 }
 hls. 18 N 12 W 19 }

Land same as before

- West On south side of Section 32 Var. 5.50
 26.00 Enter Swamp C.S.
 27.93 Stream 4 C.S.
 34.00 Pin 5
 * 40.00 Set post gv. Section Car.
 Hemlock 10N 32 E 30
 do. 20N 25 W 62
 52.22 Cedar 10
 67.00 Enter Swamp C.N. + S.
 70.50 Entered Leconawby River
 Course S. 2.65 L. wide + Ropped over
 Sandy lime Rock set meander post
 B. Ash 10N 7 Links
 Land except Swamp same
 * 36.00 Leave Swamp C. N + S

July 10th 1841

It is proper here to remark in reference to this South boundary (43N R24W) that the Variation of the needle could not be obtained from Sect. 36 to near the corner of Sections 32 + 33 when it was found to have increased nearly one degree the line was improved a little by ^{set} off + a correction back to line before run + thence run West at the true

Variation to the Leconawby River this was all that I could do on the account of provision otherwise I should have corrected it as much as it needed. Similar difficulties frequently occur in this section of country but for the most part of them they are fully corrected.

Surveyed 1841 by Wm. A. Bent U.S.
 Var. 5° 15'

West commencing at the Meander post on the east side of the Leconawby ^{River} on South side of sections 32*

70.50 West of corners of sections 32 + 33

73.30 Over River and set post
 Spruce 10 in diam west 15

80.00 Set post corner of sections 31 + 32
 Cedar 12 N 27 E 12 } Bearings
 do. 14 N 53 W 13 }
 528' W Corrected
 Cedar 14 5 45 E 17
 24 5 24 W 35
 10.32 Cedar 12

Land Swamp Cedar Spruce
 Hemlock + C.

* Height above Lake Superior 293.7 feet
 See remarks on last page of the

3^d back N.B. all the heights here
after expressed in feet in the field
notes of the following survey
are determined by the barometer
for height - above Lake Superior

West On south side of section 31 Var. 5.15

7.00 Lone swamp C.N. + S.

16.00 Cedar 14 in. dia.

20.50 Enter swamp C.N. + S.

26.93 B. Ash 10

27.50 Lone swamp C.N. + S

40.00 Set gn. section post U.S. 3'

Sugar 14 N 20 E 25 }
do. 16 N 55 W 12 }

51.50 Sugar 18

67.21 do. 18

80.00 Sect. post cor. of township 42 + 43 N

Ranges 24 + 25 West #:

Sugar 14 S 70 W 28 Bearings

do. 20 N 69 E 45

Land level good 2^d rate Sugar 3 in
y. Birch Cedar + c.

Height 331.1 feet

NB this line was left at 80.00
instead 80.50 to effect a good
close with the west boundary which
had been mostly run previously
surveyed 1844 by Wm. A. Burt
D.S.

West 13.33 Sugar 14
South 3.15 Sugar 14

East Boundary

North On East side of sections 36 Var 4-55

7.55 Hemlock 10

25.00 Enter swamp C. E. + W.

29.65 Cedar 8

40.00 Set gr. section post

Fir 85 60 W 6	}
Cedar 7 N 22 E 6	

48.26 Tamarack 8

65.50 Cedar 7

80.00 Set post corners of sections 25 + 36

East corrected

B. Ash 10 N 39 E 56

Spruce 85 85 W 17

Maple Stub 12 S 28 E 16

Cedar 7 N 5 W 20

10.98 Burnt Stub 16

Land level (except swp) 3^d rate

Cedar, Tamarack, Spruce, Alder

Fir Hemlock

North On East side of section 25 Var. 4-55

8.94 Cedar 9

23.84 do. 12

40.00 Set gr. post

Cedar 10 S 30 E 16	}
do. 12 N 22 W 12	

42.00 Leave swamp W. S. W.

55.00 Enter swamp C. West

69.44 Hemlock 22

72.00 Leave swamp C. W. S. W.

79.00 Enter swamp W. S. W.

80.00 Set post corners of Sect. 24 + 25

B. Ash 10 S 35 W 24

Spruce 12 N 84 E 4

Land mostly swamp + same as before

N 89° 51' E corrected

Spruce 14 S 30 E 44

1.00 Lean Swp SE

11.14 Hem 10

North On east side of section 24 Var. 4.50

5.00 Ledge swamp C.E. + W.

9.32 Hemlock 23

15.00 Enter swamp C. + W.

29.65 Cedar 8

5050

4038

1012

40.00 Set gn. section post

Fir 8 S 60 W 25 }
B. Ash 6 N 69 E 23 }

48.56 Cedar 8

60.00 Ledge swamp W.S.W.

67.56 Hemlock 12

78.00 Enter swamp W.S.W.

80.00 Set post corners of sections 13+24

Fir 8 S 25 W 27 }

Tamarack 12 N 63 E 47 }

Land mostly swamp with short narrow ridges + Kiroule Cedar

Tamarack Spruce Alder Hemlock

Birch Fir

Sandy Lime rock near surface of swamp

N 89° 52' E

1 km 18 57 1 E 27

0.50 Enter Swamp N 85

10.12 4 Birch 10

North On east side of section 13 Var. 4.50

8.16 Fir 5

23.65 Cedar 8

40.00 Set gn. section post

Birch 18 S 22 W - }

Maple 14 N 13 E 4 }

55.45 Cedar 10

64.57 Aspen 14

80.00 Set post corner of sections 12+13

Cedar 14 S 32 W 18

Asp. 12 N 23 E 24

Land mostly same as before.

N 89° 54' E Corrected

Cedar 14 55 4 6 23

10.06 Cedar 12

North On east side of section 12 Nov 4-50

7.84 Fir 6

26.65 Hemlock 12

* 40.00 Set gr. section post

Hemlock 12 S 46 W 23

* Do 14 N 27 E 32

48.78 Fir 6

63.07 Tamarack 10

* 80.00 Set past corner of section 1 + 12

N 89° 04' 3" E Corrected

Cedar 10 N 51 E 16

10.26 Hem 16

* Cedar 75 34 E 18

Spruce 12 N 45 W 22

Land same as before

Cor. set & re-established
10/30/52
by A. Metzger

* Corner located 10/15/53 by A. Enger while cruising timber. BT is a badly rotted stump, but slabs of upper part of stump were lying on ground at base of stump. Slab of old face with scribe marks "1/4 5" plainly visible is present. Other BT is obliterated. Recent post and an alder one had been set, but not in position called for in field notes. Set 4" x 4" x 6" green cedar post in position called for in field notes.

Cor. set & re-established
6/23/53
by B. Buckler

* Corner located 10/15/53 by A. Enger while cruising timber. Faces, but no visible scribe marks on Cedar 75 34 E 18. 16' cut off about 3' above ground, much altered with later marks. Stumps of two other cedar BT's may be in place, with possible trace of scribe mark on Cedar 10 N 51 E 16. Found old stumped post and points of two other old posts in post, one of which could be original. Posts not set exactly in right relationship to BT, so corner requires further checking. Old cedar stump registers 7' c about 16' to Northwest. Set 4" x 4" x 6" green cedar post 3rd location tag. No doubt that the corner belongs here.

North On east side of section 1 Nov. 4-50

2.00 L. swamp C. E. + W.

7.88 Birch 14

12.00 Enter swamp C. E. + W

25.00 L. swamp C. W. N. W.

26.87 Hemlock 16

40.00 B. Ash 10 gr. section cor.

Fir 12 S 32 E 23

45.00 Enter swamp C. E. + W.

49.53 Tamarack 8

52.00 L. swamp E + W

67.92 Hemlock 20

76.00 Enter swamp C. W. + N. E

80.00 Set past temporary township corner

22
80.22 x Land same

Surveyed 1841 by J. M. A. Burt

x West side Sec 31 T 44-23 Intersect 22^{to 5} lbs

North of temp 6 mi. post

North Boundary Var 4.45

West On South side of Section 36 T44N R24W

From post corner of T2 43+44 N R2 23+24 W

North 9.54 B. Ash 5
 14.00 Stream 6 E
 East 17.01 Cedar 8

B. Ash 8 N 41 E 20

Birch 10 S 15 W 36

12.17 Fir 6

22.00 Lene swamp C.N. 45

22.44 Hemlock 10

40.00 Set gn. section post

Cedar 9 N 35 E 47

Hemlock 14 N 60 W 14

42.00 Enter swamp C.N. 45

51.35 Tamarack 12

73.79 do 10

* 80.00 Set post corner of sections 35 + 36

North 4.62 Hem 20 Hemlock 15 N 55 E 5
 do. 10 N 8 W 37

56' W Corrected
 wh. pine 20 S 42 E 7
 Hem. 15 S 31 W 47
 4.50 Enter swamp
 1110 cedar 9

Land (except swamp) slightly rolling
 poor 2^d rate Hemlock, Birch, Spruce
 Cedar Tamarack Fir & C

orig
 U.S.P. BT Secs 35, 36, 43-44 + 1/2 Sec 102 R24W, T44N

* CORNER SET FROM BT w. pine stump by
 F. BRAY AND S. G. ARKENS 6-24-74

West On south side of section 35 T44N R24W Var 5.10

7.00 Lene swamp C.S.W.

13.50 Hemlock 15

20.00 Enter swamp C.N. 45.

32.56 Cedar 10

40.00 Set gn. section post

Spruce 14 N 61 E 20

Cedar 9 N 30 W 23

47.00 Lene swamp C.N. 45

53.70 Spruce 10

69.00 Enter swamp C.N.

71.51 Tamarack 12

80.00 Set post corners of sections 34 + 35

N 23 E 2.68 Tam 12 Tamarack 10 N 52 E 65
 do. 10 N 27 W 10

Same as before

S 3 E Corrected
 Jan 9 514 E 51
 " 11 551 W 35
 11.55 Spruce 9

Nov 5.25

West On south side of section 34 (T44N R24W)

15.85 W. Pine 20

40.00 Set gn. section post

Hemlock	14N 28E 37	}
do.	12N 59W 44	

46.00 Leave swamp C.N. + S.

49.72 W. Pine 60

58.00 Enter swamp C.S.W.

70.64 Spruce 4

80.00 Set past corners ^{sections} of 33 + 34

Tamarack 7N 42E 72

Spruce 4N 43W 06 } (or 16)

Same as before

N20'E Corrected

2.91 Tam. 7

Nov. 5.10

West On south side of section 33 (T44N R24W)

11.02 Tamarack 12

32.35 Spruce 3

40.00 Set gn. section post

Spruce	4N 20W 37	}
do.	4N 42E 86	

52.03 Spruce 3

71.64 Tamarack 10

80.00 Set past corner of section 32 + 33

N8'E Corrected

8.00 on W side of small knot Tamarack 6N 21E 36

8 ft high do. 10N 17W 19

10.18 Tam 12 Swamp timber same as before

Supp. 97

West On south side of Section 32 (T44N R24W) Var. 5.00

- 7.00 Lone Swamp C.N. & S.
 11.55 Linn 22
 30.75 Birch 16
 40.00 Set gn. Section post
 Birch 10 N 19 E 31 }
 do. 6 N 42 W 17 }
 53.10 B. Ash 7
 73.08 Birch 30
 80.00 Set post corner of sections 31 & 32
 Hemlock 30 N 46 E 11 }
 do. 12 N 19 W 15 }

See pg 140

Land (ex swamp) rolling 2^d rate
 Hemlock Birch Linn, Fir
 Elm & c.

West on south side of sections 31 (T44N R24W)

- 11.71 Linn 12 Var 4.54
 31.24 Cedar 18
 40.00 Set gn. Section post
 Sugar 6 N 23 E 9
 Linn 12 N 59 W 18
 49.88 Elm 15
 71.50 Hemlock 25
 79.80 Set post corner of Towns 43 & 44 N
 Between R 24 & 25 West

West 5.43 Fir 8
 North 11.57 Hem 30

Fir 10 N 24 E 39 }
 Sugar 8 S 34 W 35 }
 Same as before July 12th
 Surveyed 1841 John Kurt D.S.
 for Wm. A. Kurt D.S.

West Boundary Var. 4-54
 South On east side of section one (T43N R-25W)

- 9.00 Enter swamp C.E. + W.
 10.65 Cedar 18
 19.84 Stream + C.W.
 33.16 Tamarack 8
 40.00 Set gr. section post
 Spruce 5N 5E 27
 Hls. 5N 29W 11
 49.00 Lene swamp C.E. + W.
 56.07 Fir 4
 73.28 Hemlock 20
 80.00 Set post corners of sections 1 + 12

589°40'W
 Tam 12 S 54 W 14
 8.00 Saw Sup WSW
 9.67 Cedar 10

Tamarack 10N 39E 38 }
 Hls. 10N 29W 39 }
 Land slightly rolling (by swamp)
 2^d rate Hemlock, Sugar Spruce
 Tamarack Cedar + C

pg 139

Tam 14 S 19E 22

" 13 N 37E 37

South On east side of section 12 (T43N R 25W)

- 15.00 Enter swamp C.E. + W. Var 4-58
 15.90 Cedar 6
 33.35 Hls. 8
 33.75 Stream 5C S.W.
 37.00 Lene swamp C.W. S.W.
 40.00 Set gr. section post
 Hemlock 10N 47E 40 }
 Hls. 10N 79W 27 }
 55.35 Sugar 28
 62.00 Enter swamp C.E. + W.
 72.30 Tamarack 6
 80.00 Set post corners of sections 12 + 13

589°55'W
 Tam 12 S 33W 47
 10.49 Tam 10

Tamarack 9N 13E 38
 Hls. 10N 9W 21

Same

Loc 12 Tam 12 S 33 W 47 is on the 15, 146E.
 Tam 12 9N 13E 38 shows a little part of the
 same as the bit of road made.
 part of place not same old W-S and from
 line blazes intersect at approx location of
 corner. Tam 12 S 33W 47 is a low nothing
 for all the distance. The distance 5 mps
 from the corner to the intersection is made
 between 409 and 410

South on east side of Section 13 (T43N R-25W)

11.50 Tamarack 15 Nov. 4-58

27.19 Pond 4.00 L over.

35.37 Tamarack 12

40.00 Set gn. Section post

Tamarack 12 N 55 E 14

do. 12 N 60 W 15

50.60 Tamarack 10

75.55 do. 12

80.00 Set post Corner of Section 13 + 24

589°49' W

Tam 16 S 35 W 47

8.16 Tam 18

Tamarack 10 N 34 E 32

do. 10 N 50 W 26

All swamp Tamarack Spruce + C.

South on east side of Section 24 (T43N R-25W)

16.05 B. Ash 10 Nov. 4-58

22.50 Stream 50 S.W.

23.00 Low swamp C.N.W.

31.21 Fir 11

40.00 Set gn. Section post + enter swamp C.E. + 20.

Cedar 10 N 17 W 32

do. 10 N 62 E 29

48.30 Spruce 10

58.25 Stream 3 C.S.W.

71.20 Tamarack 10

80.00 Set post Corner of Section 24 + 25

Land mostly swamp Tamarack

Spruce Cedar B. Ash + C.

Bearings Cedar 10 N 15 E + 1

Tamarack 9 N 22 W 16

589°46' W

Tam 16 S 67 W 56

4.93 Int. Esc. River and

For 8 mean Corner

Cedar 16 N 4 W 31

Var. 4.58

South On east side of Section 25 (T43N R25W)

5.40 Intersect Escanawby River 200 ft. wide

See pg 28

75.35 Rapid C.S.C.

80.75 Fir 10 m corner

Swamp Tamarack Spruce Fir & C.

July 13th

Surveyed 1841 by John Bent D.S.

for Wm. A. Bent D.S.

North On east side of Section 36 (T43N R-25W)

15.10 Sugar 10

Var. 4° 55'

32.18 Do. 12

40.00 Sel 20. Section past

Sugar 18 N 37 E 20 } bearings

Fir 10 S 78 W 11 }

50.03 Sugar

64.00 Enter swamp C. C. & W.

66.90 Cedar 10

80.00 Sel past Cor. of Sections 25 & 36

589° 59' W

10.51 Fir 6

Spruce 10 N 73 W 29 }

Tamarack 8 S 85 W 9 }

Land (except swamp) mostly level ^{good}2nd side sugar y. Birch Fir cedar & C.

Var #. 55'

North on East side of Section 25 (T43 N R25 W)

11.35 Stream 5 c. East

16.95 Cedar 8

40.00 Set gn. section post

Cedar 10 N 60 W 15 }

Fir 6 N 87 E 13 }

47.10 Gr. Birch 14

72.16 Intersected the Esconauy River
and set post

Cedar 14 S 80 W 8 Bearing

75.35 Over River to meander corner

Land all swamp Cedar Spruce

Tamarack Fir Hemlock

NB It will be seen that this Section

line is 75 links too long it was

thought best to leave it so as the

subdividing would probably be

instructed to move the corners

north of it 75 links south

Surveyed 1841 by Wm. A. Burt L.S.

for Douglas Houghton L.S.

4.93

75.35

80.28

Subdivision
of
Township 43 North Range 24 W
of the
Principal Meridian of Michigan
By A. D. Sullivan Deputy
Surveyor
Began June 19th 1852
Finished July 16th 1852

I William Braun do solemnly
swear that I will and faithfully
perform the duty of Axman in
marking all lines in the surveys of
all United States Land in which I
shall be employed as such to the
best of my ability William Braun
sworn & subscribed before me this
25th day of May 1852

A. D. Sullivan Deputy
Surveyor

I Charles Featherly do solemnly swear
that I will well & faithfully perform
the duty of Axman in making all lines
in the surveys of all United States lands
in which I shall be employed as such

to the best of my ability
 Charles Featherly
 Sworn & subscribed before me
 this 2^d day of July 1852
 A. D. Sullivan Deputy Surveyor

I Cyrus Talmadge and I Horace
 Walden do solemnly swear that
 we will well and faithfully
 perform the duties of Chain Carriers
 in all surveys of United States Lands
 in which we shall be employed as
 such and that we will level the chain
 in measuring over uneven grounds
 and plumb the tally pins whether
 sticking or dropping the same and
 that we will report the true distance
 of all notable objects and the true
 length of all lines that we may
 assist in measuring and mark
 correctly the letters and numbers
 at all corners that we may be required
 to mark to the best of our skill and
 ability
 Cyrus Talmadge
 Horace Walden

Sworn and subscribed before me this
 25th day of May 1852
 A. D. Sullivan Deputy Surveyor

V 5 East Beginning at post corners of
Sections 5+6 on North boundary thence

South Random between Sections 5-6

Chs. lks.
40.67 Set temporary post

80.67 Set temporary post corners of
Sections 5-6-7 and 8

June 19 1852

East Random between Sections 23+26

Chs. lks.
40.00 Set temporary post

80.22 Intersected North and South line
18 links South of post

West Random between Sections 19 and 30

Chs. lks.
40.00 Set temporary post

79.68 Intersected West boundary at post

East Random between Sections 8 and 17

Chs. lks.
40.00 Set temporary post

79.78 Intersected North + South line
14 links North of post

East Random between Sections 9+16

40.00 Set temporary post

80.60 Intersected North and South line
50 links North of post

South Random between Sections 7 and 8

Chs. lks. Variation $4^{\circ} 50'$ East

40.00 Set temporary post

80.00 Set temporary post corners of
Sections 7-8-17 and 18

East Random between Sections 5 and 8

Chs. lks.
40.00 Set temporary post.

79.60 Intersected North and South line
35 links North of post

$S 89^{\circ} 40' E$ Random between Sections 4 and 9

40.00 Set temporary post

80.46 Intersected North + South line
14 links North of post

West Random between Sections 6 and 7

Chs. lks.
40.00 Set temporary post

79.95 Intersected West boundary 10 links
South of post. $V 5^{\circ} E$

West Random between Sections 7 and 18

Chs. lks.
40.00 Set temporary post

80.05 Intersected West boundary 8 links
South of post

South Random between sections 17 and 18

lks. lks.

05° 05' East

40.00 Set temporary post.

80.00 Set temporary post corners of

Sections 17, 18, 19 and 20

Tree corner 46 links West + 15 links North

East Random between section 18 and 19

lks. lks.

40.00

Set temporary post

80.00

Set temporary post corners of sections

17, 18, 19 and 20.

Cast Random between sections 17 and 20

Ch. lbs
40.00

Set temporary post

80.00 Set temporary post corner of
sections 16. 17. 20 & 21

June 20 1852

Cast Random between sections 16 and 21

40.00

Set temporary post

80.00 Set temporary post corners of
sections 15. 16. 21 and 22

East Random between sections 15 and 22

Ch. lbs.

40.00

Set temporary post

80.00

Set temporary post corner of
sections 14. 15. 22 and 23 on edge
of swamp NW & SW June 21st

East Random between sections 14 and 23

40.00

Set temporary post

80.00

Set temporary post corner of
sections 13. 14. 23 and 24

East Random ^{between} Sections 13 + 24
 40.00 Set temporary post
 80.00 Intersected East boundary 79 links
 North of post

N89.54W Correlled between Sections 13 and 24

Fin 9S 31W 20

Ch. lks. Do. 10N 40W 34

10.04 Maple 10

24.00 Enter swamp Course SE and E by N.

30.15 Tamarac 7

36.00 An small rise of ground $\frac{1}{2}$ acre

40.00 Set quarter post

Cedar 8S 52E 24 links

Spruce 7N 31W 34 "

50.17 Tamarac 8

70.22 Cedar 7

80.00 Set post corner of Sections 13, 14, 23
 and 24

Cedar 9N 64E 14 links

Spruce 10N 69 $\frac{1}{2}$ W 27 "

Land East $\frac{1}{2}$ poor pine land + Spruce
 Swamp West $\frac{1}{2}$ Tamarac and Cedar
 Swamp thick undergrowth of
 Cedar June 22, 1852

South Random between sections 23 and 24

lho. lho. N 5° East

40.00 Set temporary post

80.00 Set temporary post corner of
Sections 23. 24. 25 and 26

South Random between sections 25 and 26

40.00 Set temporary post

80.00 Set temporary post corner of
Sections 25. 26. 35 and 36

South Random between sections 35 and 36

80.00 Intersected South boundary but could find no post or bearings the land being burned over and the timber nearly all down so after hunting an hour I gave it up and not having time nor disposition to measure the old line and considering it unnecessary I left and established my line although it is impossible to find it.

North Established line between Sect 35 & 36

Ch. lks
6.50 Gene Swamp course East & West
18.00 Enter Swamp " N.E. & N.W.
30.00 Gene Swamp " E.N.E. & W.S.W.
40.00 Set quarter post
Aspen $\frac{1}{4}$ S 83 E 10
Do. $\frac{1}{2}$ S 62 W 17 $\frac{1}{2}$
50.00 Enter Swamp Course East & West
80.00 Set post corner of sections 25, 26, 35 & 36
Black Tamarac 20 N 22 W 48 lks.
Do. Do. 20 S 50 W 40 "

Land South $\frac{1}{2}$ mile rolling 2^d rate
Sand & gravel and stoney timber all dead and mostly down North $\frac{1}{2}$
Mostly swamp a young growth of Aspen on dry land and willow on wet land.

North Established line between Sections 25 + 26

Chs. lks. N. 5° East

20.00 Lene swamp Course SW + SE

25.00 Enter swamp " NW + NE

39.50 Lene swamp " SW + SE

40.00 Set quarter post.

Dead pine 15 N 38 W 44

" do. 20 S 84 W 50

43.00 Enter swamp Course East + West

64.00 Lene Swamp " East + West.

71.10 Hemlock 14 on Ridge of about one
acre of green timber

80.00 Set set post Corner of Sections 23, 24, 25 ^{and 26}

Dead Birch 11 N 49 E 23 links

Do. 10 S 22 W 31

Land mostly swamp been burned over
and timber nearly all down

North Established line between Sections 23 ^{and 24}

Chs. lks. N 5° 00 East

7.00 Enter swamp Course East + West

19.00 Lene burnt land East + West

30.05 Cedar 7

40.00 Set quarter post

Cedar 10 S 77 E 18 lks

Do. 10 S 28 W 40 "

49.69 Tamarac 14

70.25 Tamarac 14

80.00 Section Corner

Land North of the burnt land Cedar
and Tamarac swamp

June 23 1852

North Random between sections 13 and 14
 Ch. lks.
 40.00 Set temporary post
 80.00 Set temporary post corner of
 sections 11, 12, 13 and 14

North Random between sections 11 and 12
 40.00 Set temporary post
 80.00 Set temporary post corner
 sections 1, 2, 11 and 12

North Random between sections 1 and 2

40.00 Set temporary post.

81.60 Intersected North boundary 42 links
West of post

S 6' W Corrected between sections 1 and 2

W. Pine 20 S 42 E 7 links

Chs. lks. Hemlocks 15 S 31 W 47 "

4.50 Enter swamp Course NW + NE

11.10 Cedar 9

25.50 Leave swamp " East + W. SW

33.15 Fir 12

37.50 Enter swamp " NE + SW

See Note 41.60 Set quarter post

Cedar 7 S 56 E. 8 links

lks. 12 S 57 W 10 links

60.00 Leave swamp C. W. S. W + E. N. E.

71.60 Hemlock 9

81.60 Set post Corner of Sections 1, 2, 11 ^{and 12}

Hemlock 16 N 88 E 10 links

lks. 13 N 42 W 16

Land low and poor sand and gravel

Some sugar on North $\frac{1}{2}$ - South $\frac{1}{2}$

Hemlock Birch Fir + B. Ash

Swamps Tamarac + Cedar

This cor. located by Borak & Melsq. Both
of B.T.s. still show strike marks. Set
this cedar post from B.T.s.

CORNER SET FROM B.T.S. 6-19-74 BY F. GRAY
AND S.G. ARKENS.

56' W Corrected between sections 11 and 12
Chs. lks. N 4° 55' East

- 9.65 Hemlock 17
29.00 Enter Swamp Course NE + West
40.00 Set quarter post
Tamarac 15 S 57 W 11 links
Lks. 12 N 35 W 50 "
50.61 Tamarac 10
54.50 Leave Swamp Course SW + E. NE
71.20 Hemlock 20
80.00 Set post corner of sections 11, 12, 13 and ¹⁴
Maple 14 N 22 W 20 links
Birch 22 N 5 E 32 "

*

56' W Corrected between sections 13 and 14
Chs. lks. N. 4° 55' East

- 10.14 Hemlock 12
29.50 Enter Swamp Course East + West
30.18 Cedar 12
40.00 Set quarter post
Cedar 10 S 56 E. 22 links
Tamarac 8 N 65 W 17 "
49.96 Cedar 6
69.78 Spruce 6
80.00 Section corner
Land + C same

June 24 1852

*

Land north of swamp nearly level
3^d rate sand + gravel soil timber. Hemlock
B. Ash + Fir South same only higher
land. Swamp Tamarac + Cedar

N89°54'W Corrected between sections 14 and 23

Chs. lks.

N. 5° East

9.81 Cedar 8

30.16 Cedar 9

40.00 Set gv. post

Spruce 8 S 68 E 24 links

Cedar 8 North 51 links

51.09 Tamarac 11

70.15 Cedar 8

75.00 Home Swamp course NE + S.W

80.00 Set post corners of sections 14, 15, 22, and 23

Spruce 10 N 66 E 22 links

Tamarac 18 N 45 W 36

Land, Tamarac and Cedar Swamp

June 25, 1852

South Random between sections 22 and 23

Chs. lks.

40.00

Set temporary post

80.00

Set temporary post corner of
Sections 22, 23, 26 and 27

duplicate~~South Random between sections 22 and 23~~~~Chs. lbs.~~~~40.00 Set temporary post~~~~80.00 Set temporary post corners of
Sections 22, 23, 26 and 27~~

*Duplicate in Original
Notes*

South Random between sections 26 and 27

40.00 Set temporary post

80.00 Set temporary post corner of
Sections 26, 27, 34 and 35

South Random between sections 34 and 35

40.00 Set temporary post

81.20 Intersected South boundary 170 links East of Post

This mile run by needle on account of the sun being to near the meridian I then tried the Variation and found a great change as the following page will show

North Correlated between sections 34 and 35

Ch. lks.

N. 3° East

9.38 Hemlock 22

N. 2° East

13.00 Enter burnt land East + S.W.

15.00 Variation 1° 45' East

21.00 Leave burnt land East + S.W.

25.00 Enter burnt land E. + West $N 2\frac{1}{2}^\circ$ East

40.20 Set quarter post $N 2^\circ 30'$ East

Alder Cedar 85 38W 31 links

lks. Tamarac 20S 75E. 44 links

51.00 Enter Swamp C. S. W. + S. E $N 3\frac{3}{4}^\circ$ E.

57.50 Leave burnt land + Swamp

65.00 Enter Swamp course S.W. + N.E

71.30 Cedar 9

80.40 Set post Cor. of sections 26, 27, 34 and 35

Tamarac 10S 52E. 6 links

lks. 9S 54W 22 "

Land, South $\frac{1}{2}$ rolling stoney land
Sugar Lynn and Hemlock
North $\frac{1}{2}$ low and swampy Tamarac
Cedar Alder + C.

North corrected between Sections 26 and 27

Chs. lks. N. 5° 00 East

3.40 Stream to links Laurie S.E.

10.80 B. Ash 7

23.00 Leone Swamp " NW + SE

30.50 Enter Swamp " NE + SW

30.77 Fir 8

37.50 On point of dry land C East

40.20 Set quarter post

Spruce 9 564 W 21 links

Tamarac 55 72 E. 8 "

51.05 Tamarac 7

70.85 Tamarac 8

80.40 Set post corner of Section 22, 23, 26 and 27

Tamarac 9 N 44 E. 19 links

lks. 95 40 W 34 "

Land Tamarac Spruce Alder + Alder
Swamp

North corrected between Sections 22 and 23

Chs. lks. N 5° 05 East

10.50 Tamarac 12

30.15 lks. 10

40.20 Set quarter post

Tamarac 9 N 36 W 29 links

lks. 105 66 E. 35 "

50.25 Tamarac 10

70.68 Spruce 9

74.50 Leone Swamp Course NW + East

80.40 Section corner

Land, Tamarac Swamp. Some Spruce
+ Cedar + Alder June 26th 1852

N 6' E Random between Sections 14 and 15
 Ch. lbs.
 40.00 Set temporary post
 80.00 Set temporary post corners of
 Sections 10, 11, 14 and 15

N 6' E Random between Sections 10 and 11
 40.00 Set temporary post
 80.00 Set temporary post corner of
 Sections 2, 3, 10 and 11

N 6' E. Random between Sections 2 and 3
 40.00 Set temporary post
 81.40 Intersected North boundary 54 links
 East of post

S. 2' E. corrected between Sections 2 and 3
 Ch. lks. N. 5° 00' East

Tamarac 95 14 E 51 links
 Do. 115 51 W 35

Sept 17

11.55 Spruce 9
 20.00 Leave swamp course SE + SW
 31.20 Fir 8
 41.40 Set quarter post
 Maple 10 N 78 E 12 links
 Hemlock 14 N 80 W 13 "
 45.00 Enter swamp course N.E. + N.W.
 48.50 Leave swamp " S.E. + West
 50.90 Hemlock 14
 67.00 Enter swamp " N.W. + East
 81.40 Set post corner of sections 2, 3, 10 and 11
 Spruce 9 N E. $7\frac{1}{2}$ lks.
 Cedar 12 S W 7 lks.
 Land rolling 3^d rate stoney + gravel
 Hemlock Birch Fir swamp on north
 part. Tamarac South part cedar
 + Tamarac

S 2' E Corrected between sections 10 & 11
Ch. lks. V 4° 50' East

- 9.76 Cedar 6
28.50 Lone Swamp course East & West
30.03 Sugar 16
40.00 Set quarter post
 Fir 10 S 42 W 55 links
 Birch 13 N 71 E 11 links
41.00 Enter Swamp C. S. S. W & S. S. E.
52.00 Lone Swamp " S. E. & N. W.
55.50 Enter Swamp " S. E. & N. W.
58.00 Lone Swamp " East & West
72.00 Enter Swamp " S. S. E. & N. W.
80.00 Set post corners of sections 10, 11, 14 and 15
 Cedar 11 S 65 E 70 links
 lks. 16 N 65 W 33 links
Land rolling 3rd rate gravel & stoney
Hemlock, Birch, Fir & C.
Swamp Cedar & Tamarac

S 2' E Corrected between sections 14 and 15
Ch. lks. Lone Swamp course SE & S. W.

- 1.00
10.10 Ironwood 7
28.00 A point of swamp C. S. W. & N. W.
40.00 Set quarter post
 Birch 7 S 82° W 10 links
 Cedar 10 N 78 E 25
49.72 Cedar 17
52.00 Enter Swamp C. N. W. & East
68.00 Lone swamp " S W & East
69.85 Cedar 15
80.00 Section corner
 Land low & poor Hemlock Cedar
 Fir and Birch June 27, 1862

189° 54W carried between sections 15 and 22

lks. lks. N 5° East

9.81 Tamarac 10

30.42 Cedar 8

40.00 Set quarter post

Tamarac 155 65½ W 23 lks.

lks. 8 N 5 E. 55 lks.

49.91 Tamarac 8

59.00 Leave swamp C North & S.W.

62.50 Enter swamp " NE & SE

80.00 Set post corner of sections 15, 16, 21 and ²²

Cedar 6 N 36 W 15 links

Spruce 105 64 W 23 links

Land Tamarac and Cedar swamp

June 28, 1852

South Random between sections 21 & 22

lks. lks. 40.00 Set temporary post

80.00 Set temporary post corners of sections

21, 22, 27 and 28

South Random between sections 27 and 28

40.00 Set temporary post

80.00 Set temporary post corner of
sections 27, 28, 33 and 34

South Random between sections 33 and 34

30.00 Variation $6^{\circ} 30'$ East

40.00 Set temporary post 27° East

50.00 Variation $7^{\circ} 10'$ East

81.38 Intersected South boundary ^{links} 116
West of post

N 1/2 W Corrected between Sections 33 and 34

Chs. lks. Variation 2°. 50' East

11.38 Sugar 18

15.50 Enter Swamp Course S.W. + E. N.E.

20.00 Variation 7°. 10' East

31.23 Cedar 7 Variation 7°. 20' East

40.23 Set quarter post 0 7° East

Tamarac 16 N 12 E 27 links

Spruce 5 S 80 W 21 "

41.50 Hemlock rise of ground 1/4 acre

52.35 Tamarac 14 Variation 7° East

71.36 Spruce 7

80.46 Set post corner of Sections 27, 28, 33 ³⁴

Spruce 7 S 20 E 11 links

Tamarac 12 S 70 W 13 "

Land mostly Alder + Tamarac
Swamp

N 1/2 W Corrected between Sections 27 and 28

Chs. lks. Variation 6° East

11.00 Leave Swamp Course West + N.E.

19.00 Enter Swamp Course West + S.E.

31.19 Cedar 8

40.23 Set quarter post

Pine 8 N 84 W 57 links

Cedar 6 N 15 E 8

50.71 Tamarac 10

70.82 Do. 8

80.46 Set post corner of Sections 21, 22, 27 ²⁸

Birch 9 S 87 W 32 links

Tamarac 12 S 50 E 27

Land Tamarac and Cedar + Alder

Swamp some Spruce

N 16° W corrected between sections 21 and 22

Chs. lks. Variation 5° East

16.30 Tamarac 10

30.45 Cedar 7

40.23 Set quarter post

Cedar 8 N 60 E 5 links

No. 85 40 W 33 "

50.28 Cedar 6

70.96 Cedar 8

80.46 Section corner

Land cedar and Tamarac swamp

thick June 30, 1852

North Random between sections 15 and 16

Chs. lks.

40.00 Set temporary post

80.00 Set temporary post corner of
Sections 9, 10, 15 and 16

North Random between Sections 9 and 10¹

40.00 Set temporary post

80.00 Set temporary post corners of Sections 3, 4, 9 and 10

North Random between Sections 3 and 4

40.00 Set temporary post

80.25 Intersected North Boundary 117 links East ^{3 post}

S 17° E Corrected between Sections 3 and 4

Ch. lks. Spruce 5 S 28 E 1 1/2 lks.

do. 4 S 40 W 22

5.00 Small ridge of pine

18.00 Low ridges course N.W. & S.E.

23.00 Low swamp " NE & W.N.W.

30.70 Hemlock 9

35.50 Enter swamp " SW & N.E.

40.25 Set quarter post

Tamarac 12 N 89 E 30 links

do. 8 N 38 W 18 "

41.00 Low swamp course N.N.E. & S.S.W.

50.03 Hemlock 25

53.00 Enter swamp " S.W. & S.E.

63.00 Low swamp " N.E. & S.W.

75.00 Enter swamp " N.E. & S. by 20.

80.25 Set post corner of Sections 3, 4, 9 and 10

Tamarac 18 N 75 E. 15 lks

do. 12 S 16 W 7

Land poor & broken timber

Fir Hemlock Pine cedar & C. the swamp

Tamarac & Spruce

S 17° E Corrected between Sections 9 and 10

Ch. lks. Variation 5° East

7.00 Low swamp course S.E. & West

9.78 Fir 10

30.00 Hemlock 8

32.00 Enter swamp " NE & West

40.00 Set quarter post

Tamarac 9 N 86 E 13 links

do. 8 N 70 W 19 "

50.50 Spruce 8

67.00 Low swamp course S.W. & S.E.

69.70 Sugar 10

80.00 Set post corner of Sections 9, 10, 15 and 16

Sugar 14 S 61 E 20 links

do. 16 S 44 W 16 links

Land North 1/2 mile low and nearly level

poor Hemlock, cedar, Fir & C.

South part 3rd rate land and gravel soil

timber Hemlock Birch & Sugar

Swamp Tamarac

S 17° E corrected between sections 15 and 16

Chs. lks.

Variation 5° 10' East

6.50 Enter swamp course East + West

9.90 Stream to course West

30.19 Cedar 9

38.00 Leave swamp " S.W. + N.E.

40.00 Set quarter post

Birch 17 West 20 links

do. 16 S 62 E 18 "

49.45 Sugar 18

62.50 Enter swamp course N.E. + W.N.W.

70.15 Spruce 9

80.00 Section corner

Land nearly level 2^d rate sand +

gravel soil timber Sugar Spruce

Birch Hemlock Cedar + the swamp

Cedar + Tamarac

July 2^d, 1852

East Random between sections 3 and 10

Chs. lks.

40.00 Set temporary post

80.04 Intersected North and South line

42 links North of post

East Random between Sections 2 and 11
 40.00 Set temporary post
 80.20 Intersected North and South line
 58 links North of post

S89.48E Random between Sections 1 and 12
 40.00 Set temporary post
 79.94 Intersected East boundary 63 links
 South of post

S89°44'W corrected between Sections 1 and 12

04.45'E Cedar 9 S 50 W 42 links

Spruce 13 N 45 W 22 "

9.94 Fir 6

11.00 On North side of Hemlock land

18.00 Gene Swamp course North + South

28.50 Enter swamp " NE + South

29.86 Cedar 12

32.00 Gene swamp " NE + SW

39.97 Set quarter post

Birch 13 S 6° W 15 links

Cedar 12 N 15 W 24

42.50 Enter swamp course NE + South

48.00 On north side of dry land

52.50 Gene swamp course North + South

63.00 Enter swamp " NE + South

69.71 Spruce 9

77.00 Gene swamp North + South

79.94 Section corner

Land mostly level 3^d rate sandy soil
Timber Hemlock Fir Birch Cedar + c
the swamp cedar and Tamarac

N89°35'W corrected between Sections 9 and 11

Ch. ^{lk.} 9.87 Birch 8

30.80 Hemlock 8

39.50 Enter swamp course S.W. + N.E.

40.10 Set quarter post

Birch 7 N 62 W 12 links

No. 9 S 10 E. 6 "

58.00 Gene swamp course North + South

68.00 Enter swamp " SW + North

70.40 Hemlock 9 Gene Swamp S.E. + N.W.

74.00 Enter swamp North + South

80.20 Section corner

Land East 1/2 mile high rolling 2^d rate

Sandy soil Timber Hemlock Birch Sugar

West 1/2 low + poor swampy land

Tamarac and cedar

N89°42'W Corrected between sections 3 and 10

Chs. lks.
70.15 Cedar 9

17.00 Leave Swamp course NE. + S.W.

30.00 Enter Swamp " North + South

30.18 Cedar 7

40.02 Set quarter post

Tamarac 15 N30°E 38 links

Cedar 85 85W 12

42.00 On south side of dry land

48.00 Leave Swamp course SW + E.N.E

50.00 Enter Swamp " South + N.E

50.11 Cedar 10

71.48 Tamarac 13

80.04 Section corner

Land East 1/2 high rolling 3^d rate

Land + gravel. West 1/2 mostly swamp

Timber Hemlock Cedar Birch

Tamarac Spruce and Fir

July 3, 1852

S89°50'E Random between sections 10 and 15

Chs. lks.
40.00 Set temporary post

79.85 Intersected North and South lines ^{links} 6 + 1
South of post.

889.506 Random between sections 11 and 14
 40.00 Set temporary post
 79.90 Intersected North + South line 23 links
 South of post

East Random between sections 12 and 13
 40.00 Set temporary post
 80.25 Intersected East boundary 24 links
 North of post

N89°50W corrected between sections 12 and 13

Ch. lks. Cedar 12 N 82W 42 links

Do. 145 32W 18 links

10.15 Cedar 10

30.25 do 9

40.12 Set quarter post

W. Pine 185 70W 7 links

Pin 8 N 34E. 11 "

44.50 Leave swamp course North + S.W.

47.00 Enter swamp " West + S.E.

50.00 Leave swamp " East + S.W.

59.00 Enter swamp - NE + E. S.E.

68.00 Leave swamp " S.S.W. + N.N.E.

69.25 Lynn 15

80.25 Section corner

Land mostly Cedar swamp. Some patches of Hemlock Land

West corrected between sections 11 and 14

Ch. lks. 6.00 Enter swamp course SE + North

10.05 Tamarac 16

13.00 On small rise of ground

30.00 Hemlock 9 on rise of ground

33.00 On North end of dry land ^{links}

39.95 Set quarter post. Cedar 755° E 25
Birch 9 N 15W 23

42.00 Leave swamp course North + South

46.00 Enter swamp " North + South

49.95 B. Ash 8

54.00 Leave swamp " W by S + N.E.

57.50 Enter swamp " E by S + North

62.00 On south end of dry land N.E.

68.20 Birch 9

79.90 Section corner

Land mostly swamp Cedar Tamarac
B. Ash Alder the dry land 3rd rate of
sand and gravel Hemlock + C

N 89° 52' W Corrected between Sections 10 and 15
 lks. lks.
 8.50 Leave swamp Course North + South
 9.75 Birch 14
 30.00 Hemlock 15
 32.50 Enter swamp " E. N.E. + W. S.W.
 39.92 Set quarter post
 Cedar 15 S 26 W 22 lks.
 No. 13 N 58 W 16
 41.00 Leave Swamp Course NE + S.E.
 69.00 Stream to links Course S.W.
 70.62 Birch 10
 79.85 Section corner
 Land East $\frac{1}{2}$ swampy the dry land
 3^d rate West $\frac{1}{2}$ nearly level 2^d rate
 Sand + gravel. Timber Sugar Hemlock
 Birch Linn

N 89° 54' W Corrected between Sections 16 and 21
 lks.
 10.60 Stream to links Course S.W.
 15.00 Leave Swamp " S.W. + N.E.
 28.00 Enter Swamp " S.W. + N.E.
 30.19 Cedar 7
 40.00 Set quarter post on dry land ^{2 acres} about
 Birch 6 S 34 E 22 links
 Spruce 11 N 42 W 50 "
 50.09 Cedar 9
 75.00 Leave Swamp Course S.W. + North
 80.00 Set past corner of Sections 16, 17, 20 and 21
 Sugar 18 S 78 W 35 links
 No. 9 S 63 E 27 links
 Land mostly Cedar Swamp some
 Tamarac + Alder dry land Sugar
 Birch Hemlock Linn + C. 2^d rate
 July 4, 1852

North Random between Sections 16 and 17

Ch^{lts.}
40.00 Set temporary post

80.00 Set temporary post corner of
Section 8.9.16.17

North Random between Sections 8 and 9

40.00 Set temporary post

80.00 Set temporary post corner of
Sections 4.5.8 and 9

North Random between Sections 4 and 5
 40.00 Set temporary post
 79.70 Intersected North boundary 70 links
 West of post

3
 15
 68

 96
 66

 9.9

810' W corrected between Sections 4 and 5

Sept 19

Tamarac 10 S 40 E 19 links

Ch. lks. lks. 8 S 73 W 16

5.00 Leave swamp course East + West

9.70 Fir 10

22.00 Enter swamp " NE + N.W.

29.50 Cedar 8

39.70 Set quarter post

Spruce 6 N 54 E 28 links

Tamarac 9 N 58 W 17 "

49.85 Tamarac 10

70.50 Spruce 9

74.50 Leave swamp course S.E + N.W.

79.70 Set post corners of Sections 4, 5, 8 and 9

Cedar 14 N 67 W 15 links 9.9

Sugar 12 S 15 E 25 " 16.5

Land rolling of rate sand and gravel
 Timber Hemlock Fir Birch Sugar
 the swamp on North 1/2 Cedar + Tamarac
 on South 1/2 Tamarac + Spruce

1/4 C. Locat of Tam B.T. Jan 62. A. Metsa
 Monument set 1-23-62
 by A. Metsa

S 10' W Corrected between Sections 8 and 9

Chs. lks. Variation 4.° 55' E.

9.00 Enter swamp course East + West

10.19 Spruce 6

30.09 Tamarac 10

40.00 Set quarter post

Tamarac 12 S 40 W 12 links

Do. 6 N 70 E 21 "

49.90 Tamarac 9

70.16 Tamarac 8

80.00 Set post corners of Sections 8, 9, 16 and 17

Spruce 10 S 70 E 23 links

Tamarac 11 S 58 W 28 "

Land Tamarac and Spruce swamp

S 10' W Corrected between Sections 16 and 17

Chs. lks. Variation 4.° 40' East

00-25 Same swamp course SE + N.W.

3.00 Enter swamp " SE + N.W.

22.50 Same swamp " SE + West

30.00 Sugar 22

40.00 Set quarter post

Sugar 11 S 30 W 12 links

Fir 9 N 42 E 14 "

50.60 Sugar 10

71.24 Lynn 15

80.00 Section corner

Land nearly level 2^d rate sand +

gravel soil timber Sugar Lynn

Fir Hemlock + C.

The swamp B. Ash Cedar Tamarac Alder

July 6, 1852

South Random between Sections 20 and 21
 40.00 Set temporary post
 80.00 Set temporary post corners of
 Sections 20, 21, 28 and 29

Duplicated

~~South Random between Sections 28 and 29
 40.00 Set temporary post
 80.00 Set temporary post corners of
 Sections 20, 21, 28 and 29~~

Error was made by
 person copying field notes

South Random between Sections 28 and 29

40.00 Set temporary post

80.00 Set temporary post corner of
Sections 28, 29, 32 and 33

South Random between Sections 32 and 33

40.00 Set temporary post

80.44 Intersected south boundary at post

North corrected between sections 32 and 33

Chs. lks. Variation 5° 50' East

9.50 Enter swamp course N.E. + S.W.

10.69 Tamarac 11

13.50 Same swamp " S.E. + West

20.00 Enter Swale " N.E. + S.W.

23.50 Same do. " N.N.E. + S.W.

30.42 Hemlock 22

40.07 Set quarter post

Cedar 14 N 57 W 19 links

Hemlock 14 N 55 E 34 "

46.00 Enter Swamp course S.W. + N.E.

50.14 Tamarac 10

70.36 Cedar 6

80.15 Set past corner of sections 28, 29, 32 and ³³

Cedar 10 N 45 W 33 links

do. 12 S 68 E. 20 "

Land except swamp little rolling
3^d rate sandy soil timber Hemlock
Birch Sugar + C. North $\frac{1}{2}$ mostly
Cedar swamp.

North corrected between sections 28 and 29

Chs. lks. Variation 5° 30' East

10.80 Cedar 6

15.00 Same swamp course N.W. + N.E.

20.00 Variation 5° 30' East

26.00 Enter swamp " S.W. + East

30.35 Tamarac 10

40.07 Set quarter post Variation 5¹/₄° East

Tamarac 8 S 70 W 9 links

do. 9 N 66 E 16 "

50.10 Tamarac 8

80.15 Set past corners of sections 20, 21, 28 and 29

Tamarac 14 S 13 W 15 links

do. 12 S 48 E 30 "

Land, South $\frac{1}{2}$ Tamarac swamp
Some Spruce and Alder

North corrected between sections 20 and 21
 Chs. lks. Variation 5° 10' East

30.50 Cedar 14 on East side of dry land
 Course S.W. + N.W.

40.07 Set quarter post
 Spruce 8 N 42 E 21 links
 Tamarac 10 S 35 W 33 "

50.45 Tamarac 10

70.77 Tamarac 10

75.00 Lene Swamp course S.W. + East

80.14 Section corner
 Land Tamarac Swamp
 Undergrowth Cedar Spruce +
 Alder

N 89.54 W corrected between sections 17 and 20
 Chs. lks. Variation 5° East

994 Lynn 20

20.00 Enter Swamp course NE + S.W.

29.25 Stream 6 links " South

35.00 Lene Swamp " S.E. + N.W.

40.00 Set quarter post
 Hemlock 18 S 43 W 17 links
 Fir 6 N 50 W 17

48.00 Enter Swamp course N.E. + South

58.00 Lene swamp " S.W. + N.E.

69.80 Birch 15

80.00 Set post corner of sections 17, 18, 19 and ²⁰
 Sugar 20 N 74 E 40 lks.
 do. 14 S 55 W 29 "

Land level 2^d rate Sandy soil
 Timber Sugar Birch Ironwood
 Fir Lynn Hemlock + C the Swamp
 Cedar + Tamarac.

N89° 54' W corrected between sections 18 and 19

Chs. lbs. Variation 5° 00 East

29.54 Elm 28

40.00 Set quarter post

Birch 185.47 W 10 links

Fir 9 N 21 E. 25 "

46.50 Enter Swamp course N.E. & South

49.52 Spruce 8

70.03 Spruce 10

80.00 To corner of sections 18 and 19

on West Boundary

Tamarac 12 N 56 E 34 links

Cedar 12 S 82 E. 21 "

Land East $\frac{1}{2}$ nearly level 2^d rate

Sandy soil Timber Sugar Lynn

Elm Birch and Hemlock

West $\frac{1}{2}$ Tamarac and Cedar Swamp

July 8, 1852

South Random between sections 19 and 20

Chs. lbs. Set temporary post

80.00 Set temporary post corner of

sections 19, 20, 29 and 30

South Random between Sections 29 and 30

40.00 Set temporary post

80.00 Set temporary post Mouth
of stream Edge of Economy River
Corner of Sections 29, 30, 31 and 32

July 9th, 1852

South Random between Sections 31 and 32

2.50 $\overset{6^\circ}{\longleftarrow} \xrightarrow{15^\circ} 2.50$ Lone River

40.00 Set temporary post

80.45 Intersected South Boundary
30 links East of post

N 4' E. Corrected between Sections 31 and 32.

Chs. lks. Leme Swamp course N.E. + West

3.00
10.52 Fir 10

22.75 Stream 5 links " East

33.50 Enter Swamp " N by W + S.S.E.

40.07 Set quarter post

Tamarac 9N 46W 10 lks.

Birch 6S 87E. 19 "

Measured East to River 6.50 Chains

50.00 Leme Swamp course N.N.E. + West

50.60 Fir 9

70.52 Hemlock 18

78.05 Meanders corners on South
bank of Esconawby River

Hemlock 15N 80W 31 links

Sugar 11S 24E 51 "

80.15 Section corner in river

Soil
Sand a little rolling 3rd rate gravel
Timber Hemlock cedar Sugar Birch
& Fir the Swamp cedar & Tamarac

West Random between Sections 30 and 31
by offset from Meander post on line
between Sections 31 and 32 on South

Chs. lks. side of Esconawby River river
2.88 Set temporary post on South side of

40.00 Set temporary post

79.45 Intersected West boundary 42 links
North of post

N 89° 40' E corrected between sections 30 and 31

Cedar 7 S 82 E 33 links

Ch. lks. Tamarac 14 N 79 E 41 "

9.91 Cedar 8

11.50 On South side of dry land

25.50 Lone Swamp course N. N. W + E. S. E.

29.75 Fir 8

33.00 Enter swamp " E by N + W. S. W.

39.45 Set quarter post

Birch 6 North 31 links

Cedar 12 N 68 E 37 "

42.00 Lone Swamp course E. N. E. + W. S. W.

49.32 Birch 20

69.90 Cedar 10

76.57 Set meander post on South side of
Esconaway River

Birch 7 S 55 E 13 links

B. Ash 9 N 45 W 19 "

79.45 Section corner in river

Land West $\frac{1}{2}$ low mostly Cedar and ^{tamarac}

Swamp East $\frac{1}{2}$ rolling 2^d rate sand +

gravel soil Birch Hemlock Sugar

Lynn + C July 11th

East Random between sections 29 and 32

Ch. lks. Lone river on north side

40.00 Set temporary post

80.18 Intersected North and South line

44 links South of post

1.158

79.45

42.00

37.45

79.45

42.00

37.45

389° 45' Random between sections 28 and 33

40.00 Set temporary post

79.50 Intersected North and South line ^{links} 92
North of post

East Random between sections 27 and 34

40.00 Set temporary post

79.55 Intersected North and South line
15 links South of post

East. True line between Sections 26 and 35
 Chs. lks.
 2.00 Enter small marsh course North + South
 4.00 Stream 6 links " S. S. E.
 6.70 Stream 5 " " South
 7.00 Leone Marsh " North + South
 Blower Pond 2 chains South
 18.00 Leone Swamp course NE + SW
 28.00 Intersect a corner of burnt land
 course N.W. and N.E.
 30.50 Intersected burnt land course
 NW + SW

Land level 3^d rate sand and and gravel soil
 Timber Hemlock Fir + Birch the ^{mostly a} Swamp
 young thick growth of Tamarac

S89°55'W corrected between Sections 27 + 34
 Chs. lks. Cedar 8
 9.88
 29.59 Cedar 10
 31.50 On dry land about one acre
 39.77 Set quarter post
 Cedar 75 55 E. 14 links
 Do. 7N 4W 4 "
 49.80 Cedar 7
 53.50 Leone Swamp course N.W. + S.W.
 59.50 Enter Swamp " N.N.E. + S.S.E.
 69.59 Cedar 9
 79.55 Section corner
 Hard Cedar, Tamarac Spruce
 + Alder Swamp

189° 06' W Corrected between Section 28 and 33
Ch. lks. Cedar 8

24.50 Glens swamp course S.W. & North

27.00 Enter swamp " E.S.E. & N.W.

29.70 Cedar 7

32.50 Glens swamp " W.S.W. & E.N.E.

39.75 Set quarter post

Cedar 24 South 9 links

Birch 22 N 3 W 31 "

48.90 Sugar 12

69.64 Sugar 20

77.50 Enter swamp course N.E. & S.E.

79.50 Section corner

Land East 1/2 mostly Tamarac and Cedar

Swamp West 1/2 nearly level 2^d rate

Dandy land - Timber Hemlock Birch

Fir and Sugar

89° 4' W Corrected between Sections 29 and 32
Ch. lks. Cedar 7

11.00 Glens swamp course North and South

30.13 Birch 10

35.00 Enter swamp " North and South

40.09 Set quarter post

Spruce 10 S 26 W 29 links

Birch 10 N 30 E. 31 "

46.50 Glens swamp course S.E. & N.W.

50.25 Birch 9

69.74 Hemlock 24

76.00 Enter swamp course S.E. & N.W.

79.28 Cedar 15 Mander corner on margin
of Escanawby River

Cedar 18 N 25 E. 16 links

80.18 Section corner in River

Land low and poor timber Hemlock

Cedar Fir & Birch

the swamp Tamarac & Cedar

N 4'E Corrected between sections 29 and 30

Chs. lks. Variations 5° East

0.62 Lone River Set Meander post

Cedar 20N 23W 13 links

Do. 5N 10E 23 "

13.00 Lone Swamp course S.E. + N.W.

30.60 Hemlock 14

36.00 Enter Swamp " SW + E.S.E.

40.07 Set quarter post V 5° 30' East

Tamarac 10N 82E 13 links

Do. 10N 55W 22

50.15 Tamarac 9

70.25 Tamarac 11

80.15 Set post corner of sections 19, 20, 29 and ³⁰

Tamarac 8N 56E 23 links

Do. 9N 75W 30 "

Land south ½ level 2^d rate Sandy Soil

Hemlock Birch + North ½ Tamarac + Cedar

Swamp July 12, 1852

East Random between sections 20 and 29

Chs. lks.

40.00 Set temporary post

80.24 Intersected North + South line + 2 links

South of post

S89.40E. Random between sections 21 and 28

40.00 Set temporary post

79.70 Intersected North + South line

63 links North of post

East Random between sections 22 and 27

40.00 Set temporary post

79.60 Intersected North and South line

34 links North of post

89° 53' W Corrected between Sections 23 and 26

3.00 Enter swamp C.S.W. and N.W.

21.00 Grove burnt land course North + ^{South}

30.32 Tamarac 10

40.11 Set quarter post

Tamarac 12 S 62 1/2 W 25 links

do 9 N 54 W 18

70.27 Tamarac 12

80.22 Section corner

Land swamp East 1/2 Cedar and
Tamarac West 1/2 Tamarac

N 89° 46' W Corrected between Sections 22 and 27

Chs. lks. Tamarac 6
9.75

29.63 Tamarac 4

39.80 Set quarter post

Tamarac 4 N 12 E 32 links

Spruce 75 67 W 29 "

50.02 Tamarac 5

69.43 Tamarac 4

79.60 Section corner

Land all swamp mostly Tamarac
Small thick growth some Spruce
and Alder

N89.13W Corrected between Sections 21 and 28

Chs. lks.

10.00 Spruce 6

29.85 Tamarack 7

39.85 Set quarter post

Spruce 6N 4E 31 links

do 7S 67E 15 "

49.65 Tamarac 9

69.90 Tamarac 10

79.70 Section corner

Land all Tamarac and Spruce
Swamp thick growth

S89.42W Corrected between Sections 20 & 29

Chs. lks.

10.15 Cedar 8

20.00 Stream 15 links Course South

30.28 Tamarac 10

40.12 Set quarter post

Cedar 10N 19W 11 links

do 12S 34W 29 links

47.00 Leave swamp course S.S.W. & N.N.E.

50.42 Hemlock 16

51.00 Enter swamp " S.S.E. & N.W.

53.00 Leave swamp " W.S.W. & E.N.E.

68.00 Enter swamp " E.N.E. & South

68.34 Cedar 9

80.24 Section corner

Land mostly Tamarac and Cedar
Swamp dry land on west $\frac{1}{2}$ rolling
3^d rate Sandy soil Hemlock Birch
Cedar & C. July 13, 1852

East Corrected between Sections 19 and 30
 Cedar 10S 27E 25 links
 Do 12N 16E 41 "

9.58 Tamarac 7
 17.00 Lone Swamp Course North + South
 29.58 Birch 8
 39.68 Set quarter post
 Sugar 24 N 35E 17 links
 Fir 12S 61E 10 "

49.58 Sugar 7
 56.00 Enter Swamp Course N.W. + S.W.
 62.50 Lone Swamp " S.W. + E.N.E.
 71.46 Hemlock 16
 73.50 Enter Swamp " S.W. + North
 79.68 Section Corner
 Land West $\frac{1}{2}$ level 3rd rate Sandy soil
 Timber Hemlock Birch Cedar
 Swamp Tamarac and Spruce
 part of East $\frac{1}{2}$ level handsome
 Sugar Land - Swamp Cedar +
 Tamarac.

N 4'E Corrected between Sections 19 and 20
 Chs. lks. Variation 5° 08'E

10.00 Lone Swamp Course N.E. + West
 13.00 Enter Swamp " S.W. + N.E.
 16.00 Lone Swamp " S.W. + N.E.
 30.09 Fir 9
 40.07 Set quarter post
 Birch 10S 63E 17
 Sugar 7N 84W 19

52.37 Birch 12
 70.40 Sugar 7
 80.15 Section Corner
 Land South $\frac{1}{2}$ 3rd rate North $\frac{1}{2}$ 2nd rate
 little rolling sand and gravel soil
 Timber Sugar Elm Fir & yew

N 6° E Corrected between sections 17 and 18

Chs. lks.

Variation 5° East

- 9.70 Sugar 14
 30.05 Sugar 12
 40.00 Set quarter post
 Sugar 18S 74E 41 links
 lks 13S 28½W 19 "
- 50.00 Sugar 9
 70.00 Hemlock 9
 80.00 Set post corner of sections 7, 8, 17 & 18
 + Birch 9N 44E 27 links
 lks 7S 42W 17 "

Land rolling 3rd rate Sandy soil
 Timber Sugar Hemlock Birch
 Fir + C.

* Located the B.T.S. 2 stations for this corner
 7/28/54. One back about 100 yds from corner
 in pine woods. One 216 by shot
 post in opposite direction. C. Metzger

Monument set 5-3-61
 by A. Metzger & W. Oliver

N 89° 39' W Corrected between sections 9 and 16

Chs. lks.

- 7.50 Swale C. South
 10.20 Maple 10
 17.50 Enter Swamp course S.E. + North
 26.00 Leave Swamp " North + South
 40.30 Set quarter post
 NW face Hemlock 17S 65E 26 links
 SW face Cedar 10N 47E 24 "
 49.50 Enter Swamp course North + South
 50.55 Cedar 10
 56.70 Stream 6 links course South
 61.50 Leave Swamp " S.W. + N.W.
 70.21 Tamarac 13 + enter Swamp N + S.
 79.67 Stream 4 links course S.S.E.
 80.60 Section corner
 Land little rolling 3rd rate sand
 and gravel. Hemlock Fir Birch Sugar
 Swamp On East ½ Cedar West ½
 Tamarac and Alder.

N89°54'W Corrected between Sections 8 and 17
 Chs. lks. 0.40 Lene Swamp Course N.W. + S.E.
 9.45 Hemlock 14
 23.50 Enter Swamp Course E.N.E. + S.W.
 35.50 On patch of dry ground
 39.25 Lene Swamp Course S.W. + N.W.
 39.89 Set quarter post
 X Birch 16N 35E 14 links
 Spruce 10S 41W 19 "
 42.50 Enter swale Course North + South
 45.50 Lene swale " S.W. + N.W.
 51.00 Enter Swamp " S.W. + N.W.
 56.00 Lene swamp " S.E. + W.N.W.
 70.38 Sugar 10
 79.78 Section Corner
 Land uneven 3rd rate sandy soil
 Timber Hemlock, Birch Fir a few
 W. Pines. Swamp Tamarack + Alder

July 14

X Located the same + sp. B.T.E. 1266
 (fallen tree) - badly decayed but very evident.
 Spruce swamp on left, not covered old
 lake on right. The ground was very
 stony. The overgrowth
 showed definite scab marks 4/28/61
 Monument set 5-9-61 by A. Metsa

S89°57'E Corrected between Sections 7 and 18
 Tamarac 12S 47E 39 links

do 6N 64E 14

Chs. lks. Tamarac 14

10.31

62.05 18.00 Lene Swamp Course E.N.E. + S.S.W.

30.10 Fir 10

110.00 40.05 Set quarter post

Fir 11S 67W 44 links

do 10N 42E 12 "

59.55 40.50 Enter Swamp Course E.S.E. + N.W.

50.20 Spruce 8

2.55 77.50 Lene swamp " S.S.W. + North

80.05 Section corner

Land level 2nd rate Hemlock Fir

Birch Sugar + cedar the swamp

cedar Tamarack and Spruce

N 6'E Corrected between Sections 7 & 8
Chs. lks. Variation 5°. 05' East

9.64 Cedar 8

62.00 12.00 Enter Swamp Course S.W. + East

58.00 22.00 Lone Swamp " East + West

40.00 Set quarter post

Sugar 12 East + 3 links

Birch 13 N. 83W 44 "

50.15 Birch 24

27.00 53.00 Enter Swamp Course S.E. + S.W.

13.00 67.00 Lone Swamp " East + West

70.40 Cedar 9

6.00 74.00 Enter Swamp " N.W. + E.S.E.

2.00 78.00 Lone Swamp " S.S.W. + N.N.E.

80.00 Set post corner of Sections 5, 6, 7, & 8.

Cedar 11 N 75E 17 links

Hemlock 17 S 75W 37

Land + C. same

N 89.34' W Corrected between Sections 4 and 9
Chs. lks. Lone Swamp Course S.W. + North

5.00 Enter Swamp " S.E. + North

10.59 Tamarac 8

23.50 Lone Swamp " North + South

36.50 Enter Swamp " S.W. + North

40.23 Set quarter post

Cedar 7 N 2E 90 links

Tamarac 15 S 47W 20 "

50.30 Cedar 6

54.50 Lone Swamp S.W. + N.E.

64.00 Enter Swamp North + South

67.00 Lone Swamp E.S.E. + W.N.W.

70.29 Birch 9

80.46 Section corner

Land East $\frac{1}{2}$ low and poor Hemlock

Cedar and Fir the Swamp Tamarac

West $\frac{1}{2}$ rolling poor gravel soil

Hemlock Fir Birch + W. Pine +

Swamp Cedar + Tamarac

N89°54'W Corrected between Sections 5 and 8
Chs. lks. Enter Swamp Course E.S.E. + W.N.W.

3.00
19.50 *Ferne* swamp " North + South

29.60 Fir 9

39.80 Set quarter post

Hemlock 9N 49E 21 links

Maple 8S 38W 14 "

45.00 Enter Swamp Course N.E. + South

50.10 Cedar 6

70.37 Spruce 5

79.00 *Ferne* swamp " N.N.E. + S.S.W.

79.60 Section corner

Land uneven 3^d rate sand + gravel
soil - Timber Hemlock Fir Birch
Cedar and Sugar - Swamp on East
1/2 Cedar B. Ash + Alder on West 1/2
Tamarac + Spruce

July 15th 1852

16
153
171 54

14

153

155.50

76.45

57.45

56.45

49.95

30.95

27.45

4.70

S89°55'E Corrected between Sections 6 and 7

Tamarac 14S 19E 22 lks.

Do 13N 37 1/2 E 37 "

3.50 *Ferne* swamp Course North + South

10.39 Cedar 9

22.50 Enter Swamp " S.W. + N.W.

23.50 *Ferne* swamp " N.E. + S.E.

30.00 Enter Swamp " N.W. + S.W.

39.95 Set quarter post

Spruce 9S 54W 23 links

Do 6N 62W 19 "

49.00 *Ferne* swamp Course N.E. + S.E.

52.50 Enter Swamp " S.W. + North

70.25 Hemlock 15 + *Ferne* swamp N.E. + S.S.W.

79.95 Section corner

Land mostly Cedar Tamarac + Spruce
Thick swamp

N6E Corrected between Sections 5 and 6
 Chs. lks. Variation 4° 50' East
 14.00 Enter swamp course S.W. & S.S.E.
 24.52 75 links West from a point on margin
 of a pond for triangulation
 27.25 10 links West of another point
 40.00 Set quarter post
 Tamarac 10S 71W 39 links
 Do 9S 53E 63 "
 57.50 Leave swamp course East & West
 70.18 Hemlock 24
 80.52 Corner on North boundary
 Hemlock 20S 26W 17 lks.
 Cedar 13S 23E 36
 Land south part level 2^d rate
 North part rolling 3^d rate sandy soil
 Hemlock Birch Fir & C. the swamp
 Tamarac Cedar Spruce & C.
 July 16 - 1852

180
 3
 3

91
 2
 10
 300

Meaders of left bank of
 Escanaba River beginning
 at post on South boundary
 of Township in Section 32
 thence up stream

Courses	Chs. lks.
N 5° E	5.00
N 7 ³ / ₄ W	7.50
N 15 ¹ / ₂ W	9.00
N 1 ¹ / ₄ E	2.50
N 13 ¹ / ₂ E	2.00
N 18 ¹ / ₂ E	2.38
N 28 ¹ / ₂ E	1.37
N 16 ¹ / ₂ E	3.50
N 2 ¹ / ₂ W	6.00
N 3 ³ / ₄ W	1.50
N 11° E	4.00
N 13° E	2.50
N 18° E	2.00
N 5 ¹ / ₄ E	5.66
N 21 ¹ / ₂ W	1.00
N 49° W	1.00
N 28 ¹ / ₂ W	1.28
N 15 ¹ / ₂ W	0.60
N 6 ¹ / ₂ W	6.50
N 5 ¹ / ₂ E	2.00
N 16° E	3.00
N 11° W	4.00
N 36 ¹ / ₂ W	5.00
N 46 ¹ / ₂ W	3.00
N 55° W	4.30 to

post in line between
 Section 29 and 32

In Section 29

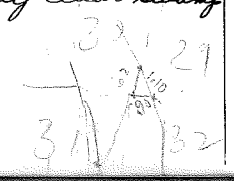
Courses	Chs. lks.
N 55 ¹ / ₂ W	1.10 to post
N 50 ¹ / ₂ W	2.00 in line between Section 29 and 30 on west bank of stream 20 links
N 61° W	7.00 Sect. 30
N 56° W	3.00
N 50 ¹ / ₂ W	3.00
N 62 ¹ / ₂ W	1.50
N 58 ¹ / ₂ W	4.38
N 55° W	2.50
N 71° W	5.00
N 65° W	1.50
N 60 ¹ / ₂ W	2.50
N 55° W	8.00
N 33° W	2.00
N 26° W	3.50
N 22 ¹ / ₂ W	5.00
N 31° W	15.00
N 35° W	2.50
N 50 ¹ / ₂ W	7.50
N 58° W	12.00
N 5 ¹ / ₂ W	3.50
N 41° W	2.50
N 34° W	12.40
N 43 ³ / ₄ W	5.84 to

post on West boundary
 land along river is
 principally Cedar swamp

Meaders of right
 bank of Escanaba River
 beginning at post on West
 boundary of Township in
 Section 30 thence down
 stream

Courses	Chs. lks.
S 46 ¹ / ₄ E	4.20
S 35° E	6.60
S 32 ³ / ₄ E	6.70
S 51 ¹ / ₄ E	4.50
S 54° E	17.60
S 42° E	5.00
S 29° E	16.00
S 24° E	9.50
S 58° E	7.00
S 62 ³ / ₄ E	5.50
S 66° E	6.50
S 57 ³ / ₄ E	7.00
S 55 ¹ / ₂ E	7.00
S 58 ³ / ₄ E	6.10
S 53 ³ / ₄ E	3.55

To post in line be-
 tween Sections 30 & 31
 Land mostly swamp
 Cedar Spruce Fir &
 C.
 To post in line be-
 tween Sections 31 & 32



In Section 32

S 48 1/4° E 3.00

S 14° E 2.20

S 22 1/2° E 5.00

S 10° W 3.00

S 2 3/4° W 3.50

S 7° E 7.00

S 33 1/2° E 3.00

S 1° E 2.00

S 5° W 5.00

S 10 1/2° W 7.00

S 4 1/2° E 6.50

S 9 1/4° W 3.00

S 17° W 6.00

S 8° W 4.50

S 18 3/4° E 2.00

S 18° E 6.00

S 7 3/4° E 4.20

S 10 1/2° E 4.00

S 1 3/4° W 2.00

S 10° W 2.80

To post on South

boundary of Township

Land mostly swamp

Cedar Spruce

Birch Fir & C.

This Township is about three fourths swamp and principally Tamarac and Cedar. The Tamarac is mostly of a large and scattered growth and filled up with a small growth of Cedar. And in many places Alders & Spruce. There is very little open swamp in the town. The principal part of the dry land is in the West part of the Township on lines between Sections 17, 18, 19 and 20 is a beautiful tract of Sugar land being comparatively clear of underbrush and the timber of large growth. The dry land in the rest of the Township appears to be irregular in shape and on considerable of it is a large growth of Cedar. There is but little W. Pine in the township. The South East corner of the township has been burned over from appearance 6 or 7 years ago. And the timber is nearly all fallen down. On the dry land a young growth of Aspen is starting up and on the wet ground willow which will in a few years make a dense thicket.

The Esconawby River crosses the South west corner of the Township and in time of high water has a majestic appearance running deep and rapidly. There appears to be some local attractions in the South part of the township which causes a great diminution in the Variation of needle on line between Sections 34 and 35 and an increase of the lines west of that.

List of names and Residences of persons who assisted in running measuring and marking the lines and Corners described in the foregoing field notes of township 43 North of Range 24 west in the State of Michigan. Viz Cyrus H. Tolmudge and Harace H. Walden of Bedford Wayne County Michigan performed the duty of Chairman and marked the Corners and William Brown of Bedford and Charles H. Hetherly of Wayne Wayne County Michigan performed the duty of Assessor. We hereby Certify that we assisted A. D. Sullivan Deputy Surveyor in subdividing Township 43 North Range 24 west in the State of Michigan that our names and Residences and the duties that we respectively performed are correctly set forth in the above statement and that said Township has been in every respect well and faithfully surveyed according to the instructions of the Surveyor General.

Witness

his

C. B. Young William X Braun Axeman

Subscribed & Sworn to before

me this 3rd Nov. A.D. 1852

C. B. Young, Notary Public

Wayne Co. Mich.

Cyrus W. Tallmadge, Chairman

Horace N. Walden, Chairman

Charles Featherby, Axeman

Subscribed & Sworn to before me

this 6th day of November A.D. 1852

C. B. Young, Notary Public

Wayne County, Mich

I, A. D. Sullivan of Bedford-Wayne, Michigan a Deputy Surveyor do solemnly swear that in pursuance of a verbal understanding with Charles Noble Surveyor General of the United States for Ohio, Indiana and Michigan in May A.D. 1852 and in strict conformity to the laws of the United States and the instruction of the said Surveyor General. I have faithfully & correctly surveyed Township 43 North Range 24 W of the principal Meridian in the State of Mich and I do further solemnly swear that the foregoing are the true and original field notes of the said survey executed as aforesaid. Subscribed & Sworn to before

A. D. Sullivan
me. this 6th day of Nov. C. B. Young, Notary Public
Wayne Co. Mich