



TIMBER SALE MAP

This information provided by authority of Part 525, 1994 PA 451, as amended.

| | |
|---------------------------------|---------------------------|
| Sale Number 61-035-24 | Date 09/16/2024 |
| Scale 1:15,840 | Page 2 |
| | Of 2 |

| | | |
|---|-------------------------|--|
| Forest Management Unit Traverse City Mgt Unit | County Benzie | Mapped By: Craig Allen |
| | | Cruised By: Contractors / Allen |

| | | |
|------------------------|-----------------------|---|
| Township 27N | Range 13W / | Section(s) and N1/2NW,NWNE; Subdivision(s) Sec. 1 NENW,S1/2NW,SWNE,SW,SWSE; Sec. 12 E1/2NW,NWNE; Sec. 13 NENW,NWNE; Sec. 18 |
|------------------------|-----------------------|---|

| Cover Type | | | |
|---------------------|-------------------------|-------------------------|------------------------|
| A = Aspen | J = Jack Pine | O = Oak | U = Upland Brush |
| B = Paper Birch | K = Rock | P = Lowland Poplar | UM = Upland Mix Forest |
| C = Cedar | L = Lowland Brush | Q = Mixed Swamp Conifer | V = Bog or Marsh |
| D = Treed Bog | LM = Lowland Mix Forest | R = Red Pine | W = White Pine |
| E = Swamp Hardwoods | M = Maple, Beech, Birch | S = Black Spruce | X = Non Stocked |
| F = Spruce/Fir | MC = Mixed Conifer | T = Tamarack | Y = Sand |
| G = Grass | MD = Mixed Deciduous | Z = Water | |
| H = Hemlock | N = Marsh | | |

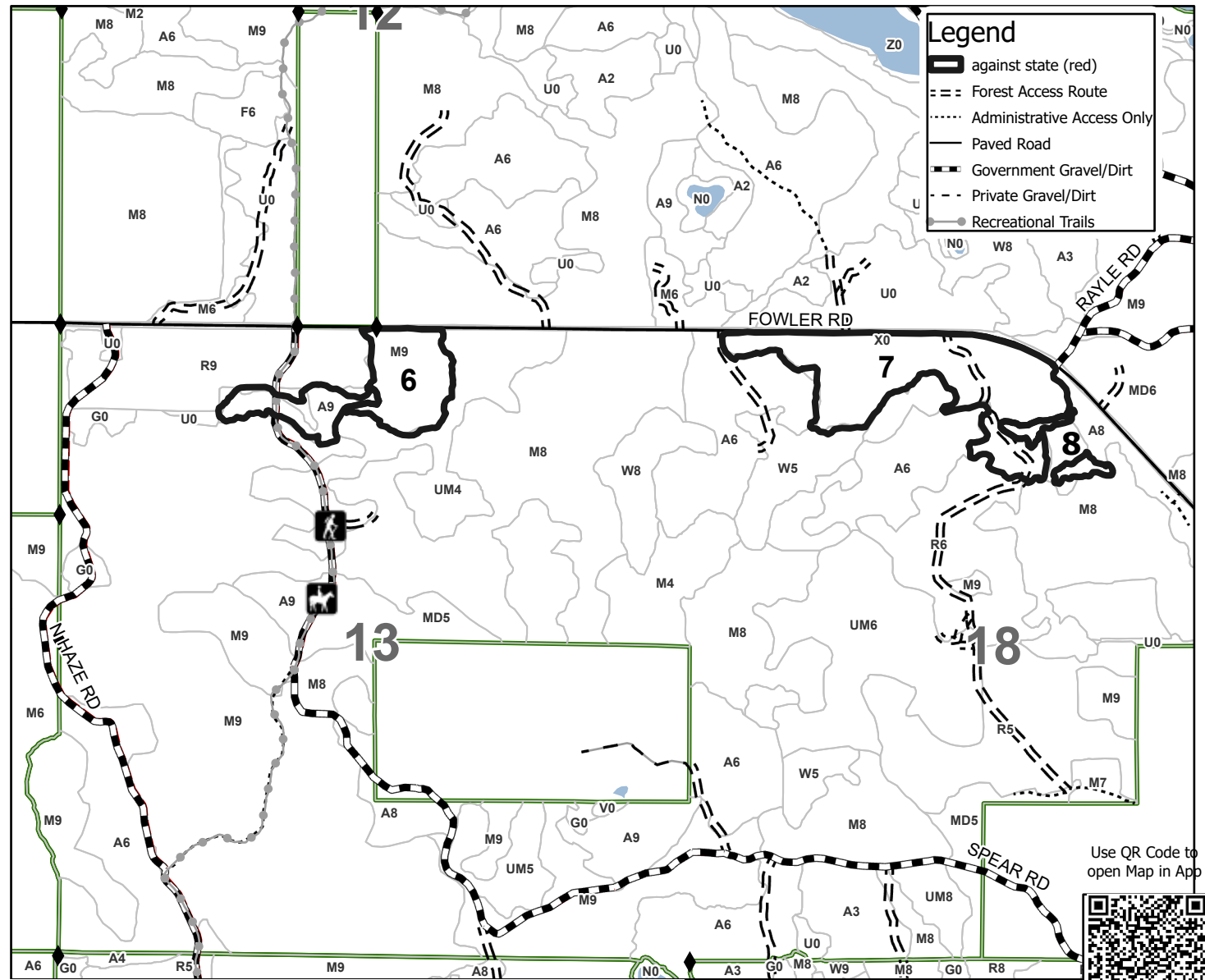
| Density | |
|-----------------------------|------------------------|
| 0 = Non Stocked | 5 = Pole Timber Medium |
| 1 = Seedling Sapling Poor | 6 = Pole Timber Well |
| 2 = Seedling Sapling Medium | 7 = Saw Timber Poor |
| 3 = Seedling Sapling Well | 8 = Saw Timber Medium |
| 4 = Pole Timber Poor | 9 = Saw Timber Well |

| PU # | Acres | PU # | Acres |
|------|-------|------|-------|
| 1 | 45.8 | 5 | 7 |
| 2 | 8.9 | 6 | 12.5 |
| 3 | 38 | 7 | 36.8 |
| 4 | 46.5 | 8 | 2.7 |



Lollipop Hardwoods

198.3 Acres



Use QR Code to open Map in App

