



### TIMBER SALE MAP

This information provided by authority of Part 525, 1994 PA 451, as amended.

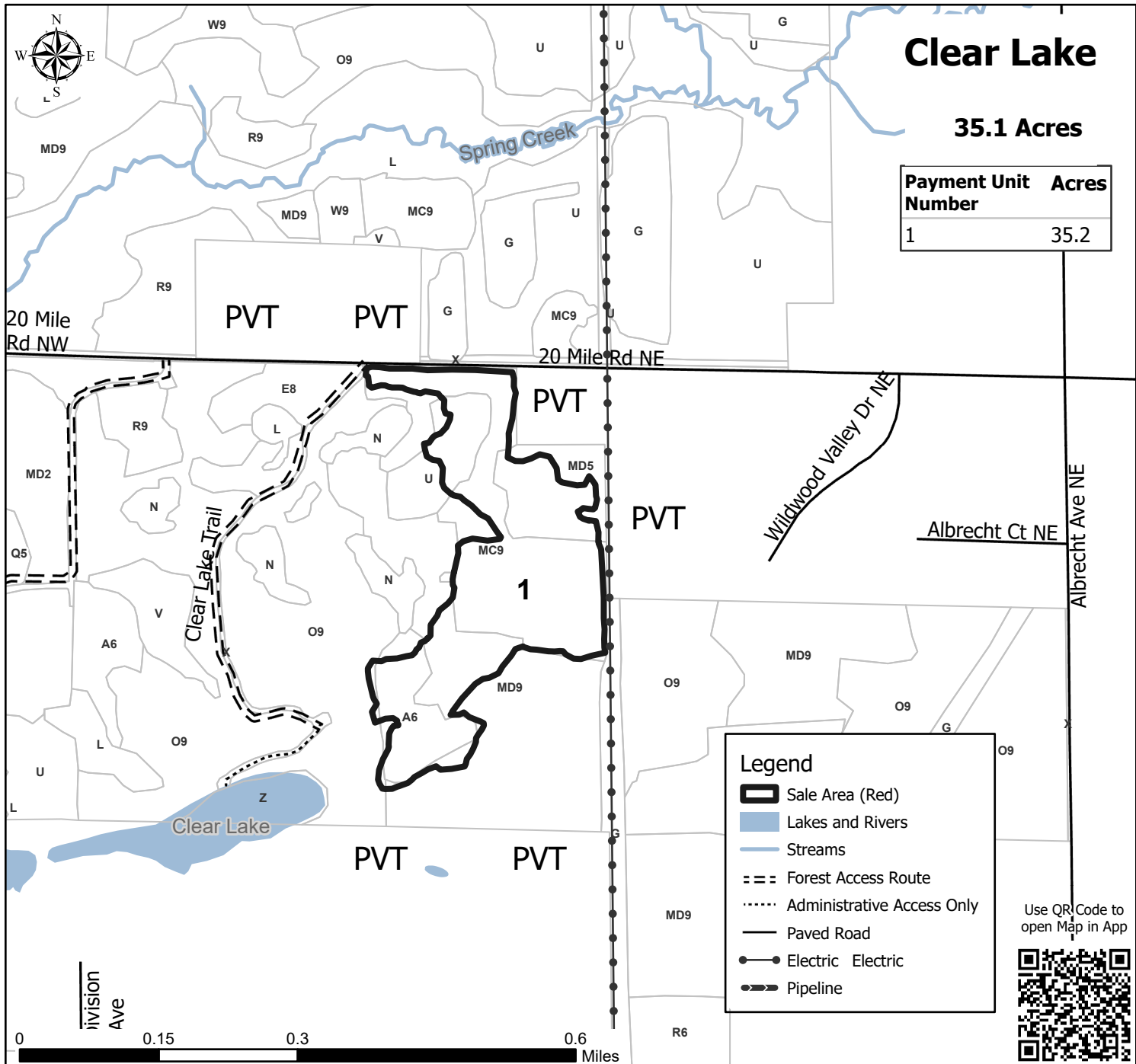
Sale Number <b>22-001-26</b>	Date 06/09/2026	
Scale 1:10,000	Page 1	Of 1

Forest Management Unit Muskegon Sga	County Kent	Mapped By: JBramer
		Cruised By: JBramer

Township 10N	Range 11W	Section(s) and Subdivision(s) Sec. 18 NW;
-----------------	--------------	--

Cover Type			
A = Aspen	J = Jack Pine	O = Oak	U = Upland Brush
B = Paper Birch	K = Rock	P = Lowland Poplar	UM = Upland Mix Forest
C = Cedar	L = Lowland Brush	Q = Mixed Swamp Conifer	V = Bog or Marsh
D = Treed Bog	LM = Lowland Mix Forest	R = Red Pine	W = White Pine
E = Swamp Hardwoods	M = Maple, Beech, Birch	S = Black Spruce	X = Non Stocked
F = Spruce/Fir	MC = Mixed Conifer	T = Tamarack	Y = Sand
G = Grass	MD = Mixed Deciduous	Z = Water	
H = Hemlock	N = Marsh		

Density	
0 = Non Stocked	5 = Pole Timber Medium
1 = Seedling Sapling Poor	6 = Pole Timber Well
2 = Seedling Sapling Medium	7 = Saw Timber Poor
3 = Seedling Sapling Well	8 = Saw Timber Medium
4 = Pole Timber Poor	9 = Saw Timber Well



## Clear Lake

35.1 Acres

Payment Unit Number	Acres
1	35.2

Legend	
	Sale Area (Red)
	Lakes and Rivers
	Streams
	Forest Access Route
	Administrative Access Only
	Paved Road
	Electric
	Pipeline

Use QR Code to open Map in App

