



### Site Prep Map

Compartment 32237	Date 02/22/2024	
Scale 1:15,840	Page 1	Of 1

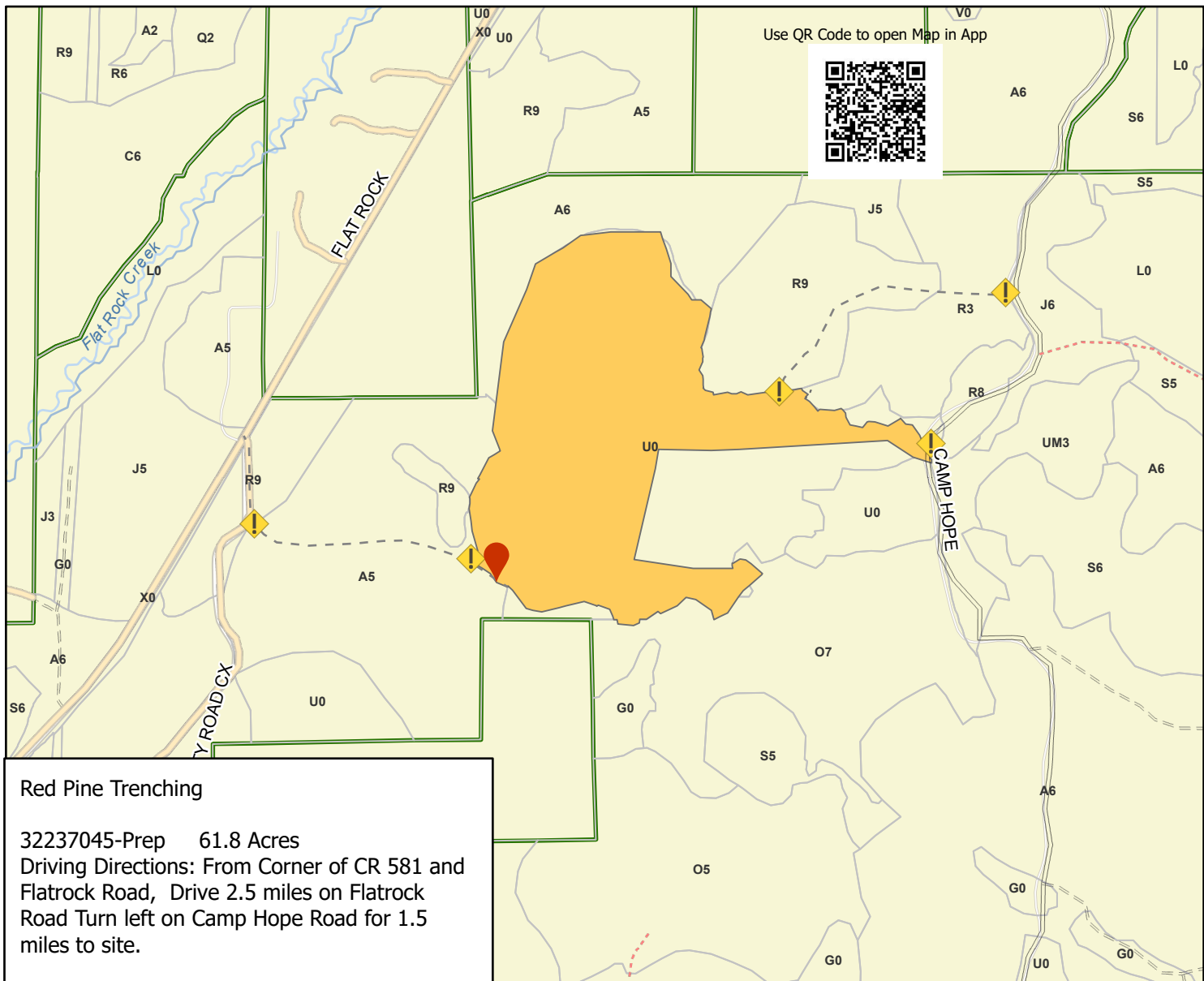
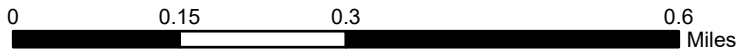
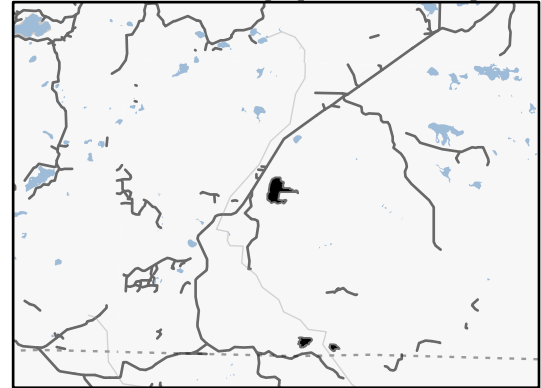
Forest Management Unit GWINN	County Marquette	Project: 32237045-prep Method: Trench
---------------------------------	---------------------	--

Township 45N	Range 28W	Section(s) and Subdivision(s) Section 20
-----------------	--------------	--

#### Legend

- Trenching Area
- Secondary Forest Road
- Forest Access Route
- Administrative Access Only
- Non-DNR Road
- ! Flaging
- Roads
- GPS Point -87.839711, 46.283579

#### Locator Map (1:200,000)



Use QR Code to open Map in App



#### Red Pine Trenching

32237045-Prep 61.8 Acres  
 Driving Directions: From Corner of CR 581 and Flatrock Road, Drive 2.5 miles on Flatrock Road Turn left on Camp Hope Road for 1.5 miles to site.